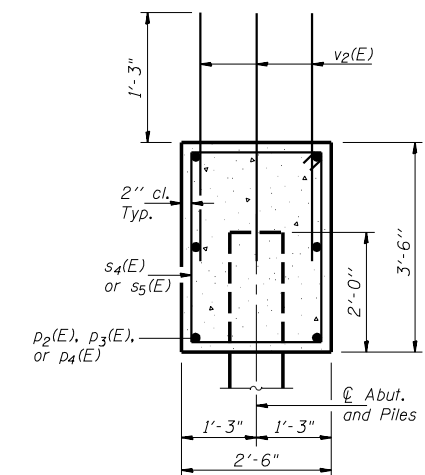
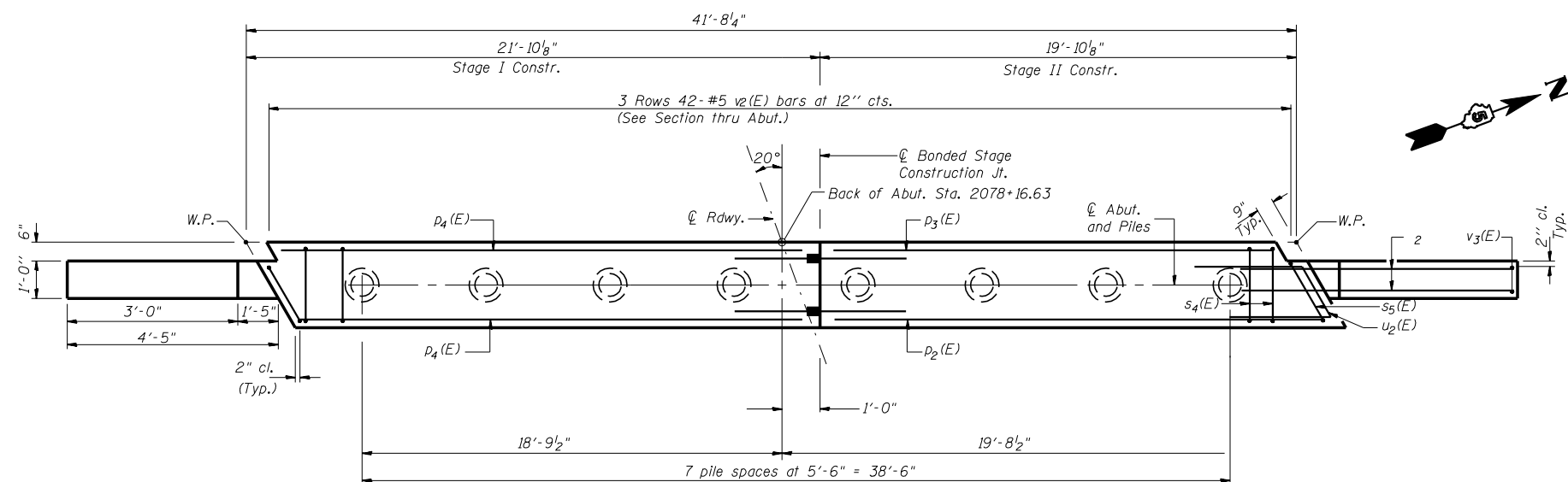


ELEVATION
(Looking West)



SECTION THRU ABUT.
(at Rt. < 's)



PLAN

PILE DATA

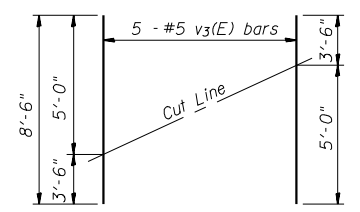
Type	Metal Shell 12" w/1/4" Walls
No Required	7+1 Test Pile
Capacity	40 Tons
Est. Length	37 Ft.

Note: Do not overdrive Piles

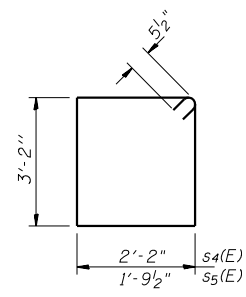
BILL OF MATERIAL

Bar	No.	Size	Length	Shape
h2(E)	28	#5	6'-2"	—
p2(E)	3	#7	20'-4"	—
p3(E)	3	#7	18'-9"	—
p4(E)	6	#7	20'-8"	—
s4(E)	39	#5	11'-7"	□
s5(E)	2	#5	10'-11"	□
u2(E)	8	#6	9'-8"	┌
v2(E)	126	#5	3'-0"	—
v3(E)	10	#5	8'-6"	—
Item	Unit	Qty.		
Concrete Structures	Cu. Yd.	14.9		
Reinforcement Bars Epoxy Coated	Pound	1766		
Structure Excavation	Cu. Yd.	46		
Furnishing Metal Pile Shells 12"	Foot	259		
Driving and Filling Shells	Foot	259		
Test Pile Metal Shells	Each	1		

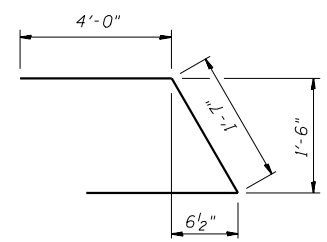
Notes:
Reinforcement Bars designated (E) shall be epoxy coated.



FIELD CUTTING DIAGRAM
Order v3(E) full length. Cut as shown and use remainder of bars in opposite face.



BARS s4(E) & s5(E)



BAR u2(E)

REVISIONS	
NAME	DATE

ILLINOIS DEPARTMENT OF TRANSPORTATION
WEST ABUTMENT DETAILS
US ROUTE 136 OVER BIG DITCH
FAP RTE. 709 SECTION 105BR-5
STA. 2078+57.63
CHAMPAIGN COUNTY STR. NO. 010-0276
SCALE: NTS DRAWN BY LP
DATE 11-2001 CHECKED BY MJS