

ROUTE NO.	DISTRICT	COUNTY	TOTAL SHEETS	SHEET NO.
TR 318A	*	Vermilion	12	1
FED. ROAD DIST. NO. 7	ILLINOIS	FED. AID PROJECT		

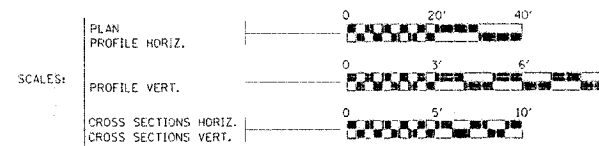
\*00-06121-00-BR

STATE OF ILLINOIS  
DEPARTMENT OF TRANSPORTATION

PLANS FOR PROPOSED  
BRIDGE REPLACEMENT

INDEX OF SHEETS

SHEET NO.	DESCRIPTION
1	COVER SHEET
2	SUMMARY OF QUANTITIES, TYPICAL CROSS SECTIONS, AND SCHEDULE OF QUANTITIES
3	PLAN AND PROFILE
4 - 9	BRIDGE PLANS
10	TRAFFIC CONTROL
11	EROSION CONTROL PLAN
12	CROSS SECTIONS

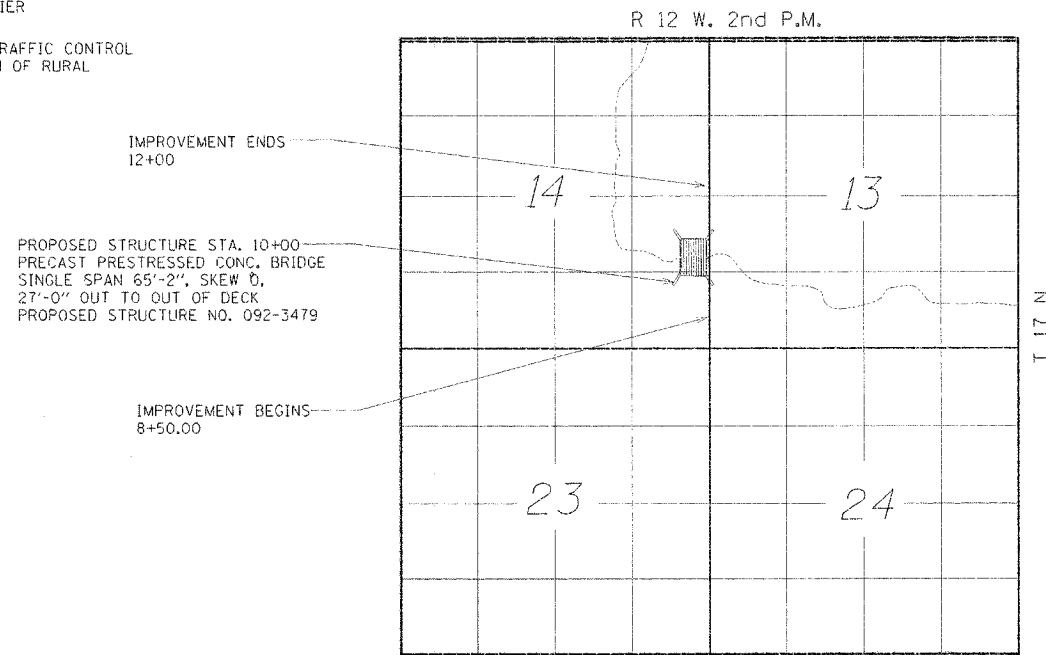
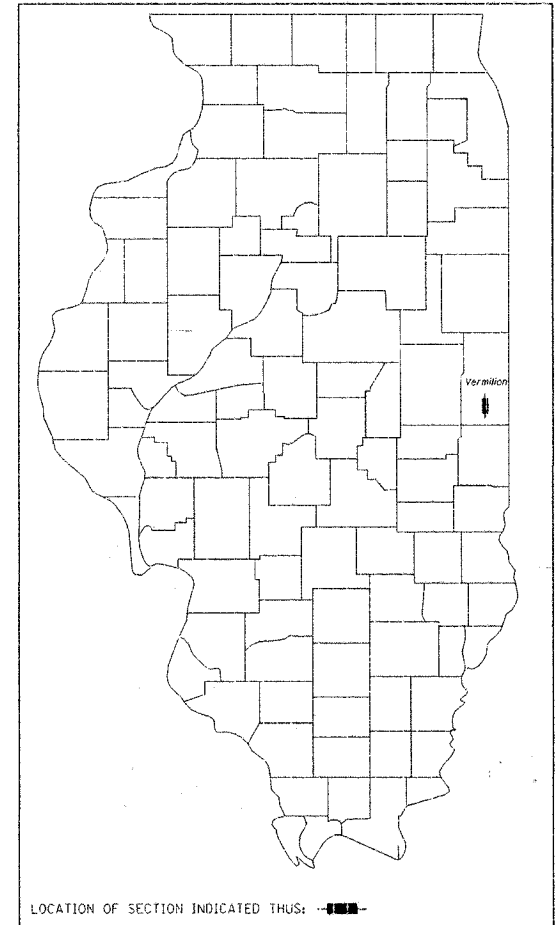


VERMILION COUNTY  
ELWOOD ROAD DISTRICT  
SECTION 00-06121-00-BR  
OLD STRUCTURE NO. 092-3185  
NEW STRUCTURE NO. 092-3479  
TR 318A

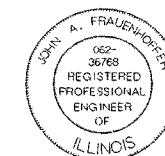
BRIDGE REPLACEMENT AND REHABILITATION  
PROJECT NO. BROS-183(88)  
JOB NO. C-95-309-05

ILLINOIS DEPT. OF TRANSPORTATION STANDARD DRAWINGS

STANDARD NO.	DESCRIPTION
515001-02	NAME PLATE FOR BRIDGES
630001-07	STEEL PLATE BEAM GUARDRAIL
631006-04	TRAFFIC BARRIER TERMINAL TYPE 1B
631026-03	TRAFFIC BARRIER TERMINAL TYPE 5A
701006-02	OFF ROAD OPERATIONS, 2L, 2W, 15' TO 24' FROM PAVEMENT EDGE
702001-06	TRAFFIC CONTROL DEVICES
704001-03	TEMPORARY CONCRETE BARRIER
BLR 21-6	TYPICAL APPLICATION OF TRAFFIC CONTROL DEVICES FOR CONSTRUCTION OF RURAL LOCAL HIGHWAYS



LOCATION MAP



*John A. Frauenhoffer*  
JOHN ANTON FRAUENHOFER  
Illinois Licensed Professional Engineer Number 36768  
License Expires November 30, 2007

APPROVED	<i>Nov 1, 2006</i>	2006
	<i>Robert Andrews</i>	COUNTY ENGINEER
APPROVED	<i>Nov 1, 2006</i>	2006
	<i>Garrett W. Todd</i>	ROAD COMMISSIONER
PASSED	<i>11/8/06</i>	20
	<i>David H. Seiber</i>	DISTRICT FIVE ENGINEER OF LOCAL ROADS & STREETS
Releasing For Bid Based on Limited Review	<i>11/07</i>	20.06
	<i>Joseph E. Cummings</i>	DEPUTY DIRECTOR OF HIGHWAYS, REGION FIVE ENGINEER
STATE OF ILLINOIS DEPARTMENT OF TRANSPORTATION		

**FRAUENHOFER**  
Frauenhoffer and Associates, P.C. Consulting Engineers  
3002 Crossing Court Champaign, IL 61822 217-351-6268

CONTRACT NO. 91330

FOR JOINT UTILITY INFORMATION  
CALL TOLL FREE 1-800-892-0123

FUNCTIONAL CLASS - LOCAL ROAD (0-250 ADT), CURRENT ADT = 150  
NET LENGTH OF SECTION = 350 FEET = 0.066 MILES