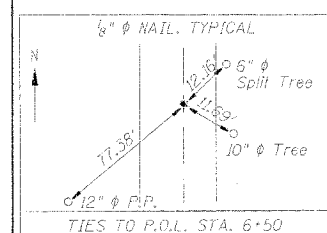
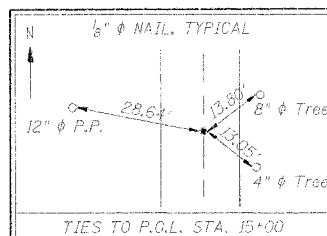


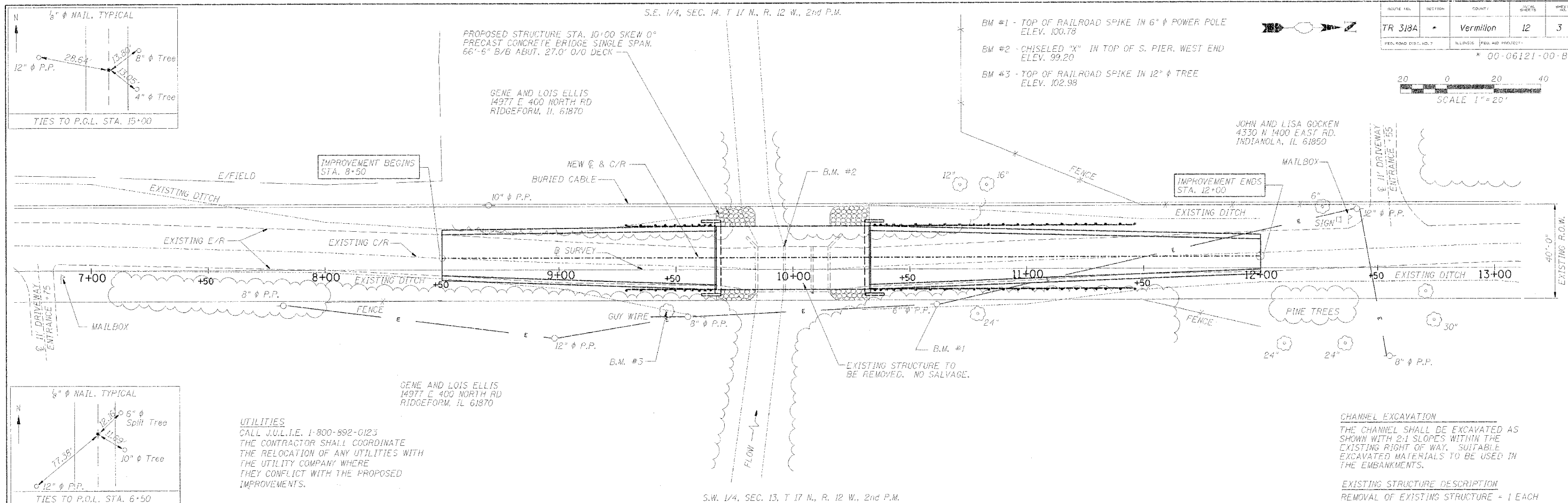
ROUTE NO.	SECTION	COUNTY	SHEET NO.	TOTAL SHEETS
TR 318A		Vermilion	12	3
FED. ROAD DIST. NO. 7 ILLINOIS PROJECT NO. 00-06121-00-BR				



UTILITIES
 CALL J.U.L.I.E. 1-800-892-0123
 THE CONTRACTOR SHALL COORDINATE
 THE RELOCATION OF ANY UTILITIES WITH
 THE UTILITY COMPANY WHERE
 THEY CONFLICT WITH THE PROPOSED
 IMPROVEMENTS.

GENE AND LOIS ELLIS
 14977 E 400 NORTH RD
 RIDGEFORM, IL 61870

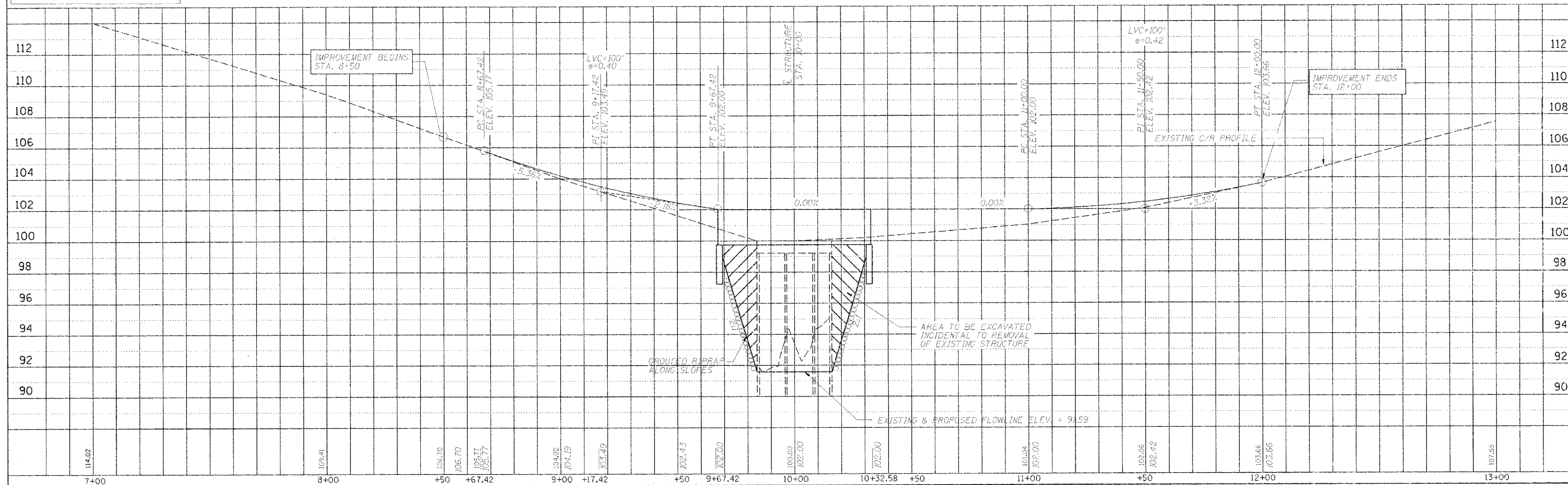
PROPOSED STRUCTURE STA. 10+00 SKEW 0°
 PRECAST CONCRETE BRIDGE SINGLE SPAN,
 66'-6" B/B ABUT. 27.0' O/O DECK



CHANNEL EXCAVATION
 THE CHANNEL SHALL BE EXCAVATED AS
 SHOWN WITH 2:1 SLOPES WITHIN THE
 EXISTING RIGHT OF WAY. SUITABLE
 EXCAVATED MATERIALS TO BE USED IN
 THE EMBANKMENTS.

EXISTING STRUCTURE DESCRIPTION
 REMOVAL OF EXISTING STRUCTURE = 1 EACH

S.W. 1/4, SEC. 13, T 17 N., R. 12 W., 2nd P.M.



PLAN & PROFILE STA. 7+00 TO STA. 13+00