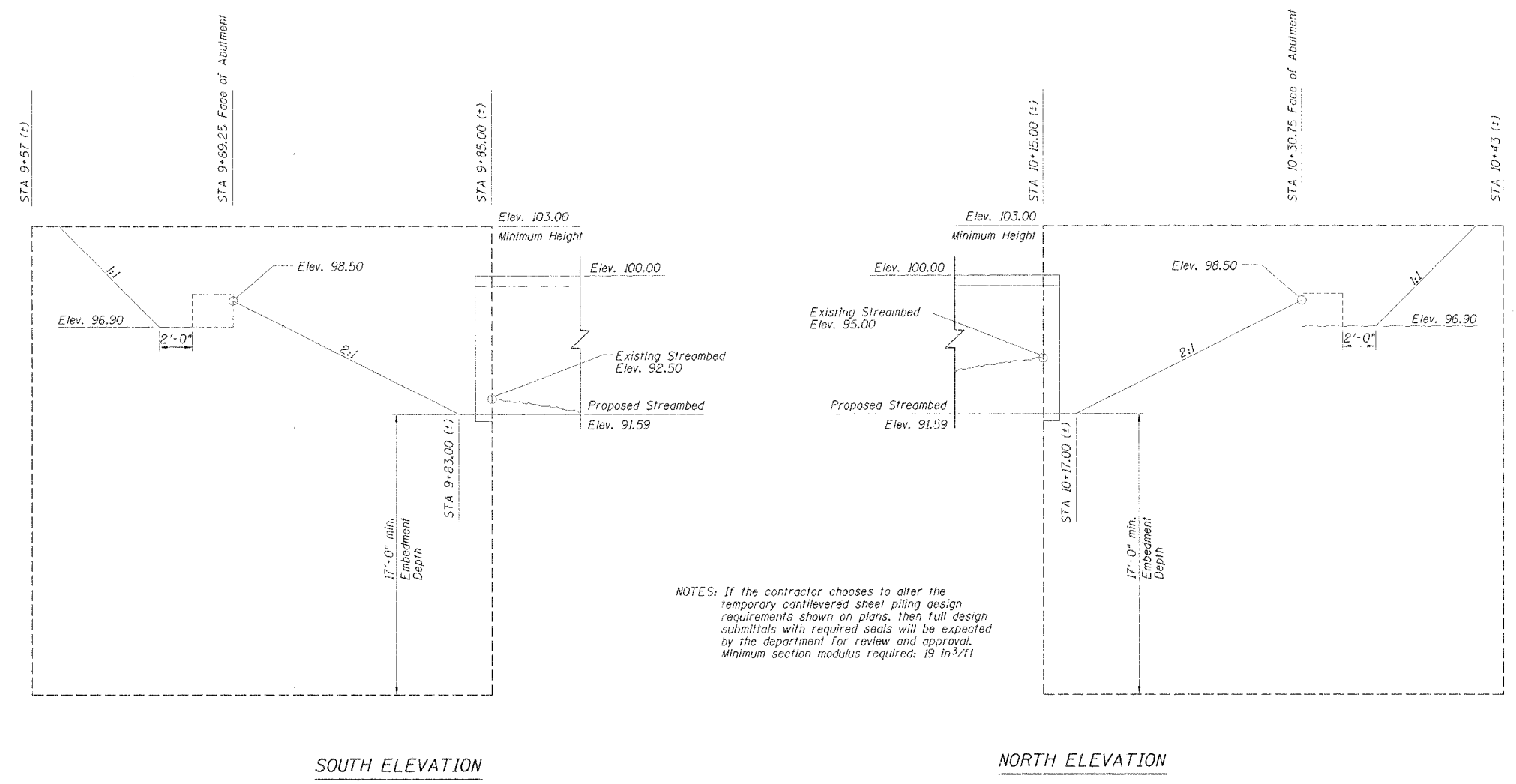
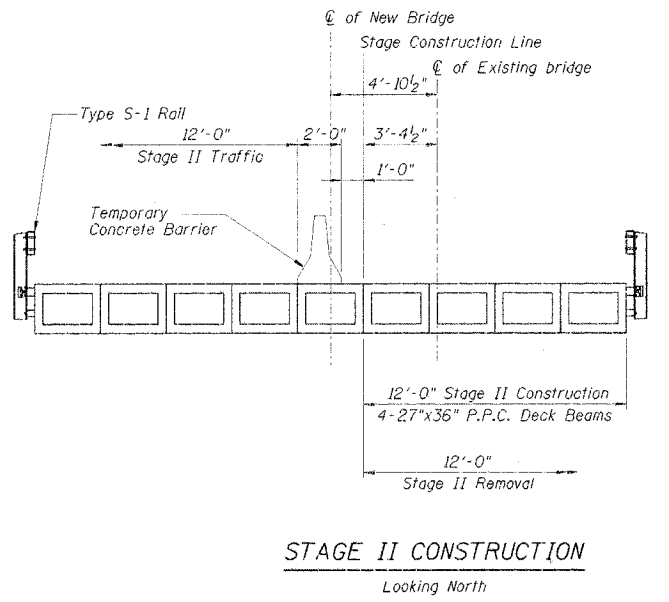
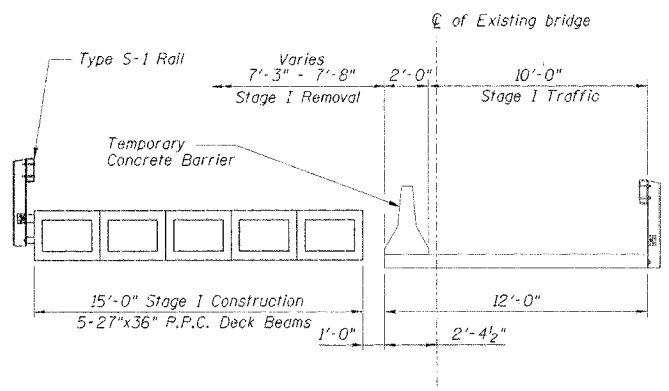
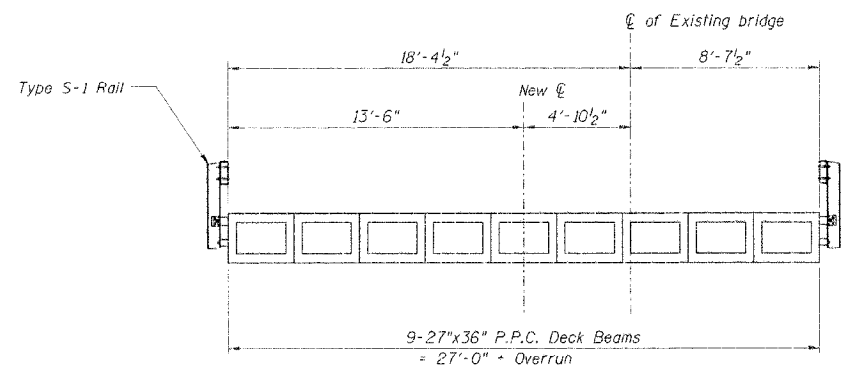
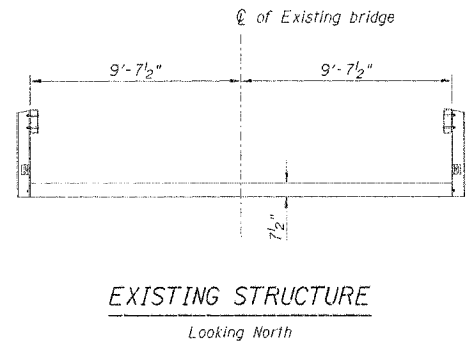


ROUTE NO.	SECTION	COUNTY	DISTRICT	SHEET
TR 318A	*	Vermillion	12	5
PROJECT NO.	PROJECT TITLE			
	*00-06121-00-BR			

Note:
The existing bridge is not square. Establish control points at stations 8+50 and 11+50 and establish the new centerline from those points. The stage construction dimensions shall be established from the new centerline.



NOTES: If the contractor chooses to alter the temporary cantilevered sheet piling design requirements shown on plans, then full design submittals with required seals will be expected by the department for review and approval. Minimum section modulus required: 19 in³/ft

DSGN	R.J. Wagner				
DR	A.M. Meier				
CHK	K.E. Brandau				
APVD	K.E. Brandau	NO.	DATE	REVISION	BY

FRAUENHÖFFER
Frauenhoffer and Associates, P.C. Consulting Engineers
3002 Crossing Court Champaign, IL 61822 217-351-6268

STAGE CONSTRUCTION	SHEET
ELWOOD ROAD DISTRICT	6
SECTION 00-06121-00-BR	DWG NO. elwd-stg.dgn
VERMILION COUNTY	DATE JAN 2005
	PROJ NO. 20053