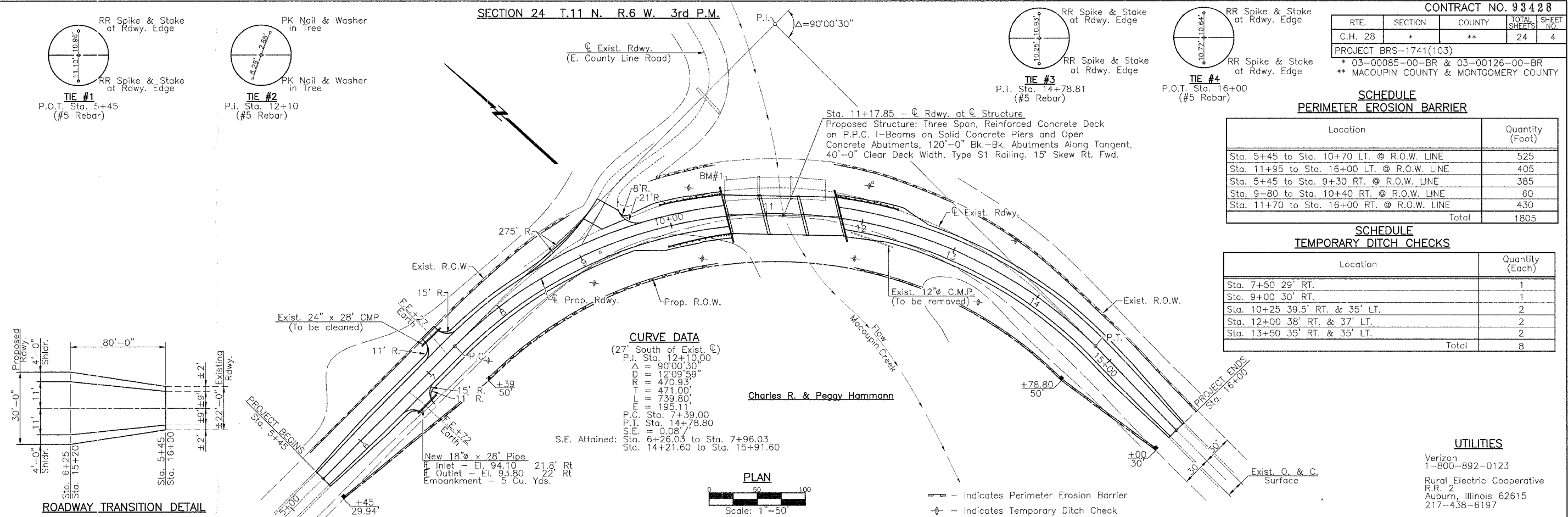


RTE.	SECTION	COUNTY	TOTAL SHEETS	SHEET NO.
C.H. 28	*	**	24	4

PROJECT BRS-1741(103)
 * 03-00085-00-BR & 03-00126-00-BR
 ** MACOUPIN COUNTY & MONTGOMERY COUNTY

SECTION 24 T.11 N. R.6 W. 3rd P.M.



SCHEDULE PERIMETER EROSION BARRIER

Location	Quantity (Foot)
Sta. 5+45 to Sta. 10+70 LT. @ R.O.W. LINE	525
Sta. 11+95 to Sta. 16+00 LT. @ R.O.W. LINE	405
Sta. 5+45 to Sta. 9+30 RT. @ R.O.W. LINE	385
Sta. 9+80 to Sta. 10+40 RT. @ R.O.W. LINE	60
Sta. 11+70 to Sta. 16+00 RT. @ R.O.W. LINE	430
Total	1805

SCHEDULE TEMPORARY DITCH CHECKS

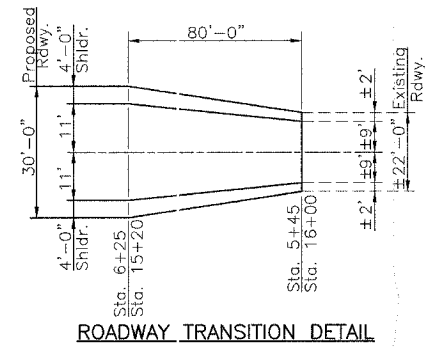
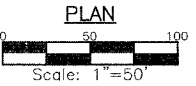
Location	Quantity (Each)
Sta. 7+50 29' RT.	1
Sta. 9+00 30' RT.	1
Sta. 10+25 39.5' RT. & 35' LT.	2
Sta. 12+00 38' RT. & 37' LT.	2
Sta. 13+50 35' RT. & 35' LT.	2
Total	8

UTILITIES

Verizon
1-800-892-0123
Rural Electric Cooperative
R.R. 2
Auburn, Illinois 62615
217-438-6197

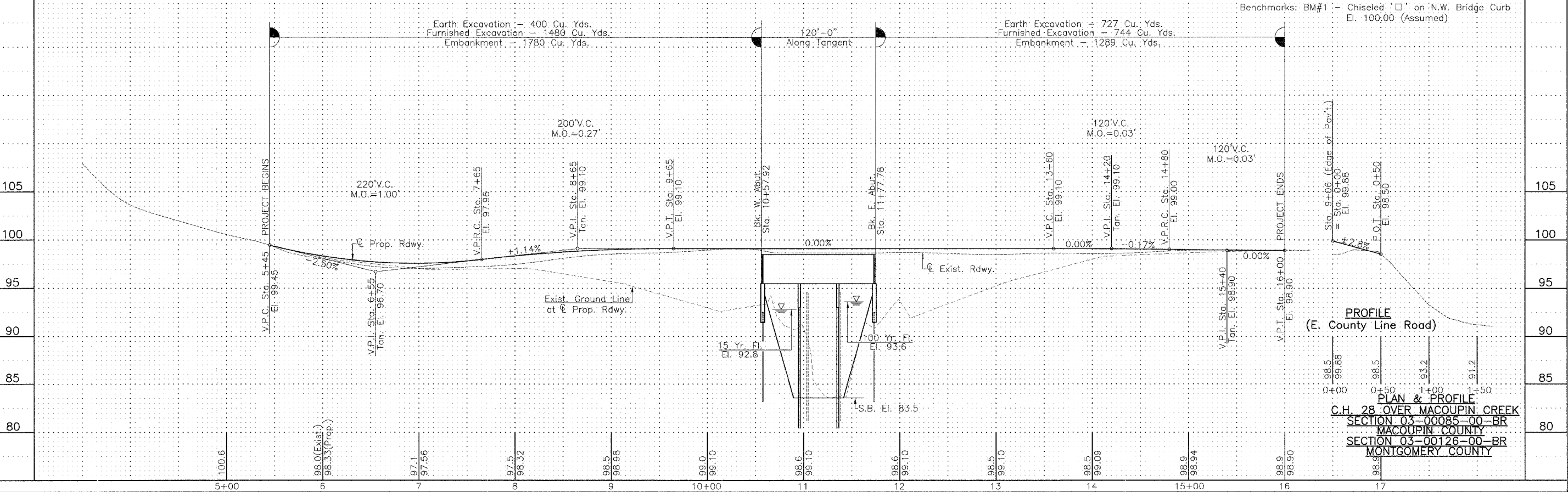
CURVE DATA

(27' South of Exist. C.)
 P.I. Sta. 12+10.00
 $\Delta = 90^{\circ}00'30''$
 $DC = 1209.59'$
 $RA = 470.83'$
 $EA = 471.00'$
 $FA = 739.80'$
 $LA = 195.11'$
 P.C. Sta. 7+39.00
 P.T. Sta. 14+78.80
 $SPE = 0.08'$
 S.E. Attained: Sta. 6+26.03 to Sta. 7+96.03
 Sta. 14+21.60 to Sta. 15+91.60



PLAN

— Indicates Perimeter Erosion Barrier
 ◆ Indicates Temporary Ditch Check



PLAN & PROFILE
 C.H. 28 OVER MACOUPIN CREEK
 SECTION 03-00085-00-BR
 MACOUPIN COUNTY
 SECTION 03-00126-00-BR
 MONTGOMERY COUNTY