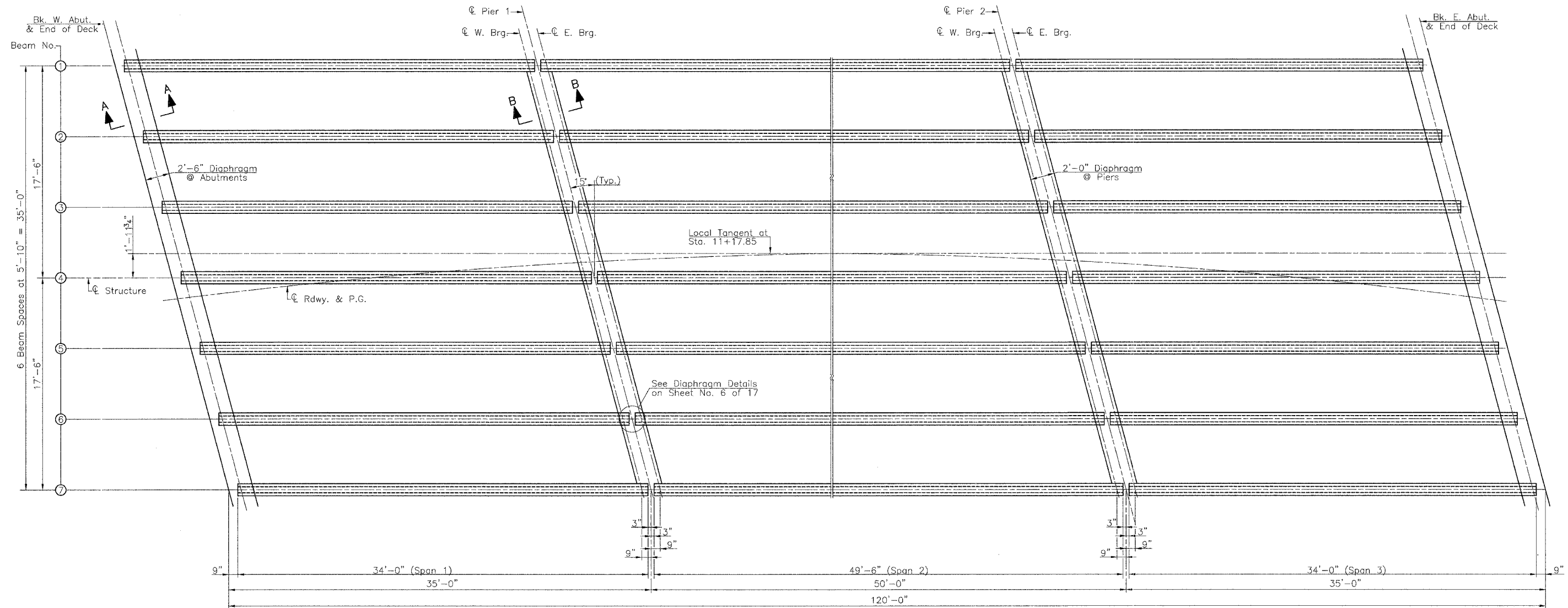


RTE.	SECTION	COUNTY	TOTAL SHEETS	SHEET NO.
C.H. 28	*	**	24	12

PROJECT BRS-1741(103)
 * 03-00085-00-BR & 03-00126-00-BR
 ** MACOUPIN COUNTY & MONTGOMERY COUNTY
 Sheet 8 of 17



FRAMING PLAN

Note: For Section A-A & Section B-B see Sheet 6 of 17.

FRAMING PLAN
 C.H. 28 OVER MACOUPIN CREEK
 SECTION 03-00085-00-BR
 MACOUPIN COUNTY
 SECTION 03-00126-00-BR
 MONTGOMERY COUNTY

FILE NAME: MACOUPIN-183 (REV. 8/4/06)