

ROUTE NO.	SECTION	COUNTY	TOTAL SHEETS	SHEET NO.
C.H. 11	01-00081-00-BR	MACOUPIN	22	1
FED. ROAD DIST. NO. 7		ILLINOIS	FED. AID PROJECT-	

STATE OF ILLINOIS DEPARTMENT OF TRANSPORTATION DIVISION OF HIGHWAYS PLANS FOR PROPOSED MAJOR BRIDGE PROGRAM

INDEX OF SHEETS

1. COVER SHEET
2. SUMMARY OF QUANTITIES & TYPICAL CROSS SECTION
3. PLAN AND PROFILE
- 4.-20. BRIDGE PLANS
- 21.-22. STATION CROSS SECTIONS

SCALES

PLAN	0' = 50'
PROFILE HORIZ.	0' = 50'
PROFILE VERT.	0' = 5'
CROSS SECTIONS-HORIZ.	0' = 10'
CROSS SECTIONS-VERT.	0' = 5'

SECTION 01-00081-00-BR F.A.S. ROUTE 1732/C.H.11 MACOUPIN COUNTY PROJECT BRS-1732(104) C-96-217-06

STANDARDS:

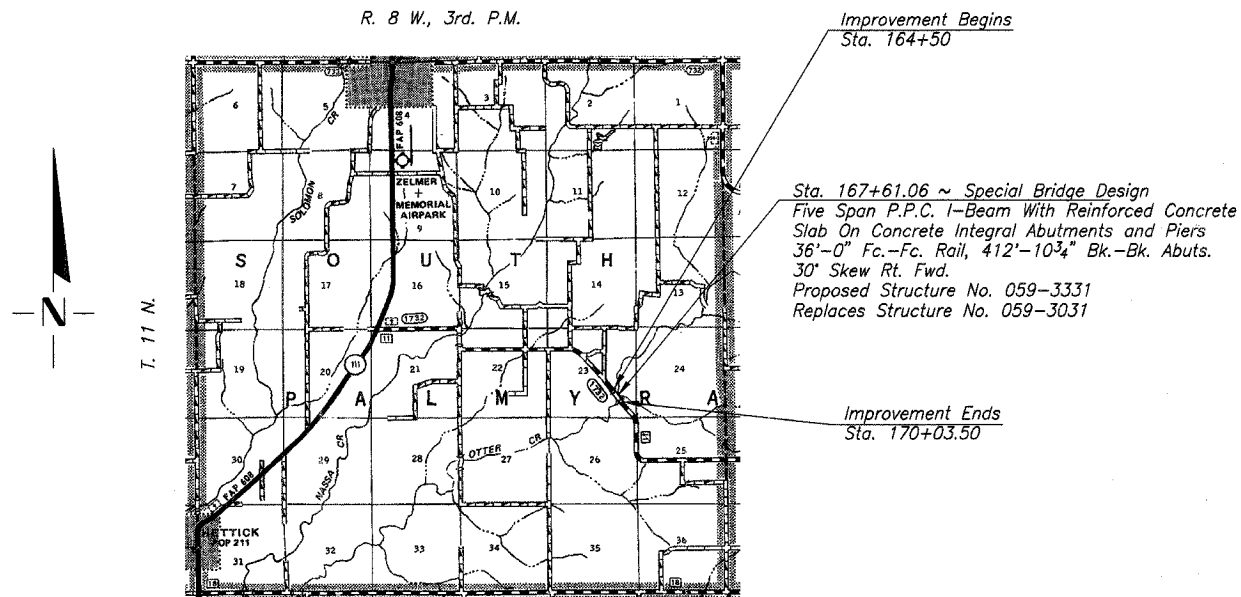
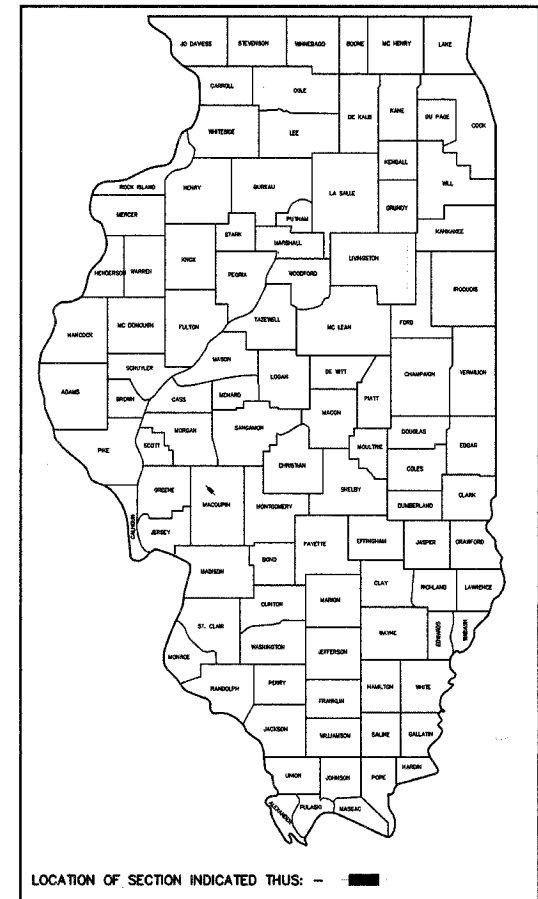
- | | |
|-----------|---|
| 280001-03 | TEMPORARY EROSION CONTROL SYSTEMS |
| 420001-06 | PAVEMENT JOINTS |
| 420401-05 | BRIDGE APPROACH PAVEMENT |
| 515001-02 | NAME PLATE FOR BRIDGES |
| 601101 | CONCRETE HEADWALL FOR PIPE DRAIN |
| 630301-04 | SHOULDER WIDENING FOR TYPE 1 GUARDRAIL TERMINALS |
| 631032-03 | TRAFFIC BARRIER TERMINAL, TYPE 6A |
| 635006-02 | REFLECTOR AND TERMINAL MARKER PLACEMENT |
| 701201-02 | LANE CLOSURE, 2L, 2W, DAY ONLY FOR SPEEDS ≥ 45 MPH |
| 702001-06 | TRAFFIC CONTROL DEVICES |
| BLR 21-6 | TYPICAL APPLICATION OF TRAFFIC CONTROL DEVICES FOR CONSTRUCTION ON RURAL LOCAL HIGHWAYS |
| BLR 23-1 | TRAFFIC BARRIER TERMINAL, TYPE 1 |

UTILITIES

MJM ELECTRIC COOPERATIVE
330 WEST BEECHER STREET
JACKSONVILLE, ILLINOIS 62650

FRONTIER COMMUNICATIONS
225 NORTH BROAD STREET
CARLINVILLE, ILLINOIS 62626

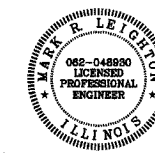
DESIGN FUNCTIONAL CLASSIFICATION:
MAJOR COLLECTOR 0-250 ADT
DESIGN TRAFFIC: 228 (2021)
DESIGN SPEED: 30 M.P.H.



LAYOUT

APPROXIMATE SCALE = 1 MILE
Net Length of Section = 553.50 Feet = 0.105 Miles

APPROVED	September 22, 2006
	<i>Thomas A Reinhart</i> COUNTY ENGINEER
PASSED	OCTOBER 17, 2006
	<i>Jim Ford</i> DISTRICT SIX ENGINEER OF LOCAL ROADS & STREETS
PASSED	OCTOBER 17, 2006
	<i>Jim Phelan</i> DISTRICT SIX ENGINEER OF CONSTRUCTION
Releasing For Bid Based on Limited Review	OCTOBER 17, 2006
	<i>Christine M Reed</i> DEPUTY DIRECTOR OF HIGHWAYS REGIONAL FOUR ENGINEER STATE OF ILLINOIS DEPARTMENT OF TRANSPORTATION



Mark R. Leichow 9-20-06
ILLINOIS PROFESSIONAL NO. 48930 Expires 11-30-07

TOLL FREE JOINT UTILITY LOCATING
INFORMATION FOR EXCAVATORS (J.U.L.I.E.)
TELEPHONE NUMBER 1-800-892-0123

CONTRACT NO. 93429

COOMBE-BLOXDORF P.C.
Consulting Engineers • Land Surveyors • Planners
708 South Grand Avenue West Springfield, Illinois 62756 217/944-8477
Design Firm License No. 184-002703