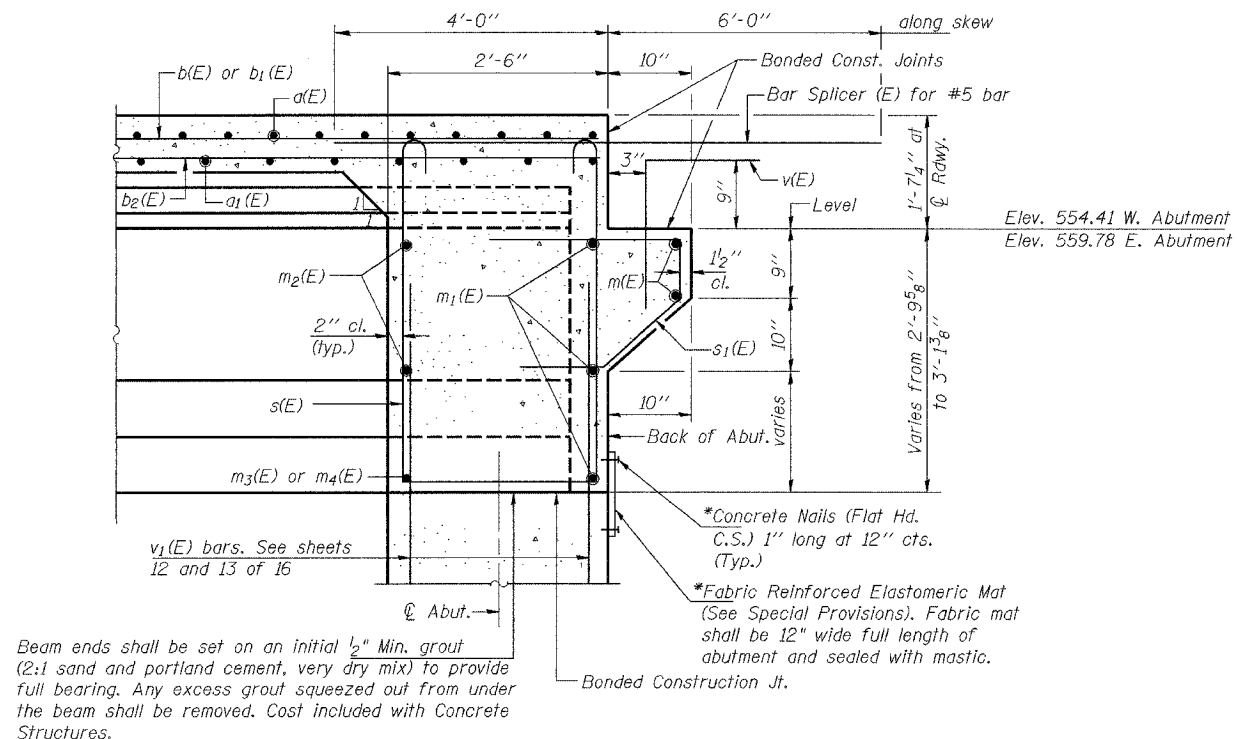


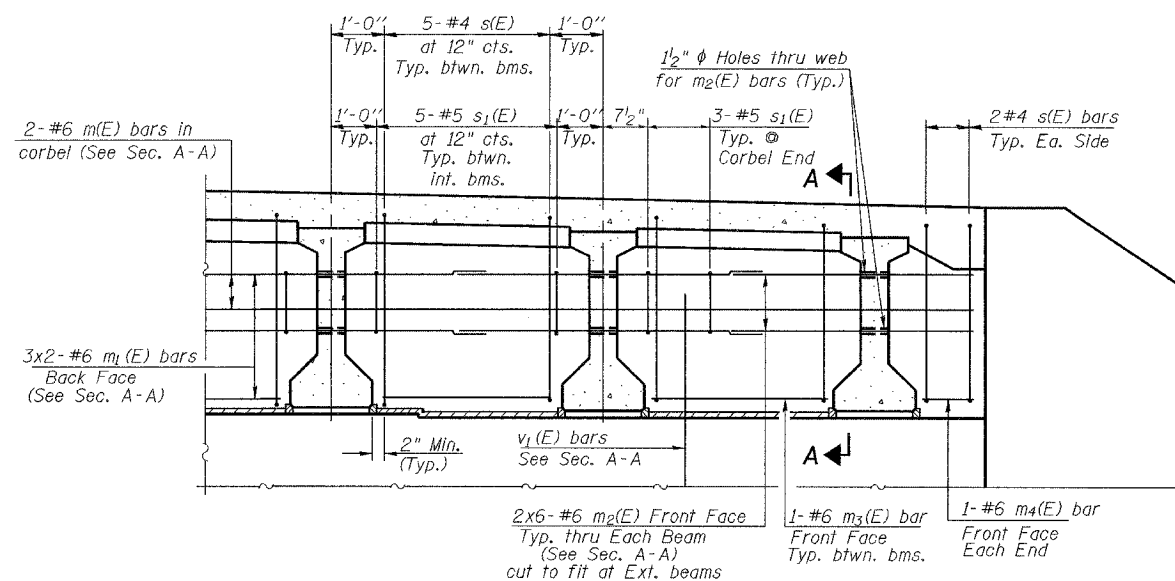
ROUTE NO.	SECTION	COUNTY	TOTAL SHEETS	SHEET NO.	SHEET NO. 8 17 SHEETS
FAS 1732	*	MACOUPIN	22	11	
FED. ROAD DIST. NO. 7	ILLINOIS	FED. AID PROJECT-			

\*01-00081-00-BR



**SECTION A-A**

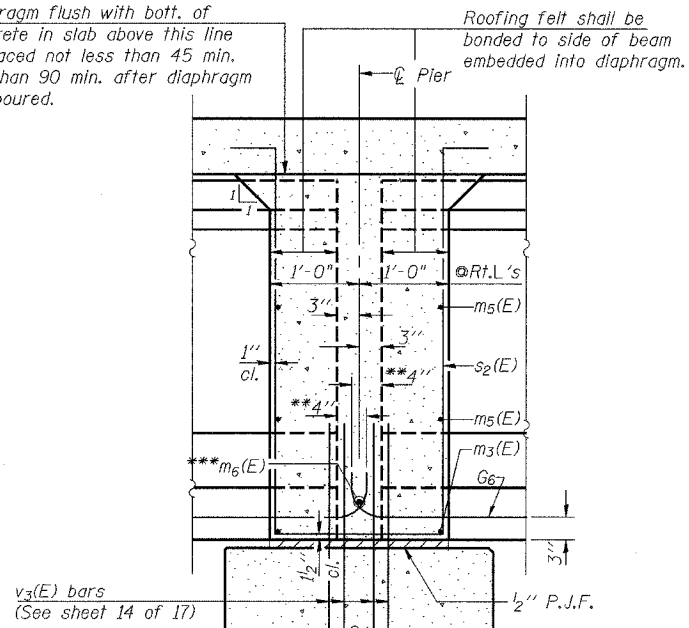
Dimensions at right angles to abutment, except as shown.  
\*Cost included with Concrete Structures.



**DIAPHRAGM ELEVATION AT ABUTMENT**

Pour diaphragm flush with bott. of slab. Concrete in slab above this line shall be placed not less than 45 min. nor more than 90 min. after diaphragm has been poured.

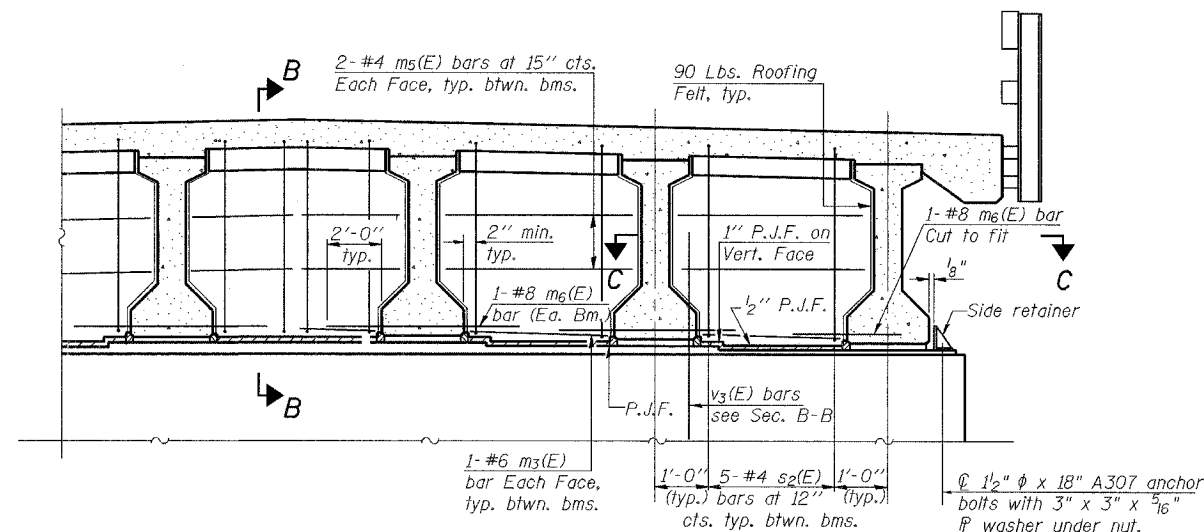
Roofing felt shall be bonded to side of beam embedded into diaphragm.



**SECTION B-B  
AT PIER  
(Fixed)**

**MIN. BAR LAP**  
#6 bar=2'-9"

\*\*To inside face of bar.  
\*\*\*Tie #8 bars with #9 wire tightly fastened to prevent any movement between bars.



**DIAPHRAGM AT FIXED PIER  
(Looking East)**

**NOTES**

Reinforcement bars in diaphragm are billed with superstructure on sheet 6 of 17.  
Concrete in diaphragm is included with Concrete superstructure on sheet 6 of 17.  
For details of bars s(E), s1(E) & s2(E) see sheet 6 of 17.  
The s(E), s1(E) & s2(E) bars shall be placed parallel to the beams. Spacing for these bars shall be at right angles to the beams.  
Reinforcement bars designated (E) shall be epoxy coated.  
For Section C-C and side retainer details see sheet 7 of 17.

ILLINOIS DEPARTMENT OF TRANSPORTATION	
SHEET TITLE DIAPHRAGM DETAILS	
PROJECT FAS ROUTE 1732 (COUNTY ROUTE 11) SECTION 01-00081-00-BR MACOUPIN COUNTY STATION 167+61.06 STRUCTURE NUMBER 059-3331	PROJECT NO. 04081 SCALE DATE 07/07/06 DRAWN BY TFG CHECKED BY GB/ML/MCB DRAWING NO.
COOMBE-BLOXDORF P.C. Engineers / Land Surveyors Springfield, Illinois Design Firm License No. 184-002703	8 OF 17 SHTS