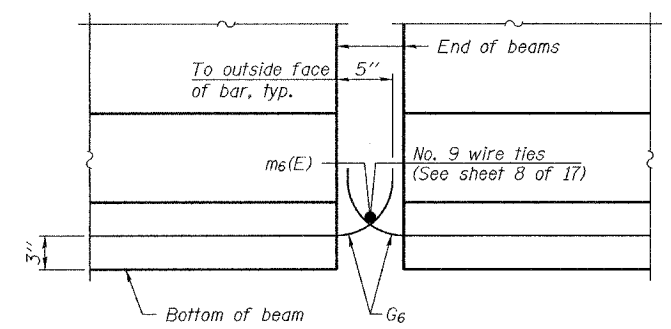
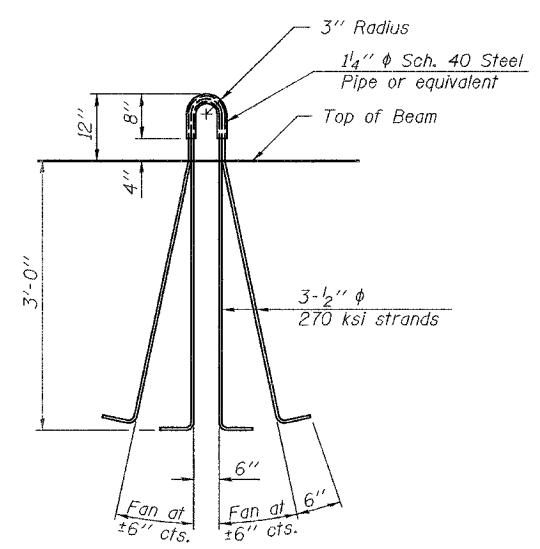


ROUTE NO.	SECTION	COUNTY	TOTAL SHEETS	SHEET NO.	SHEET NO. 11
FAS 1732	*	MACOUPIN	22	14	17 SHEETS
FED. ROAD DIST. NO. 7	ILLINOIS	FEL-429 PROJECT			

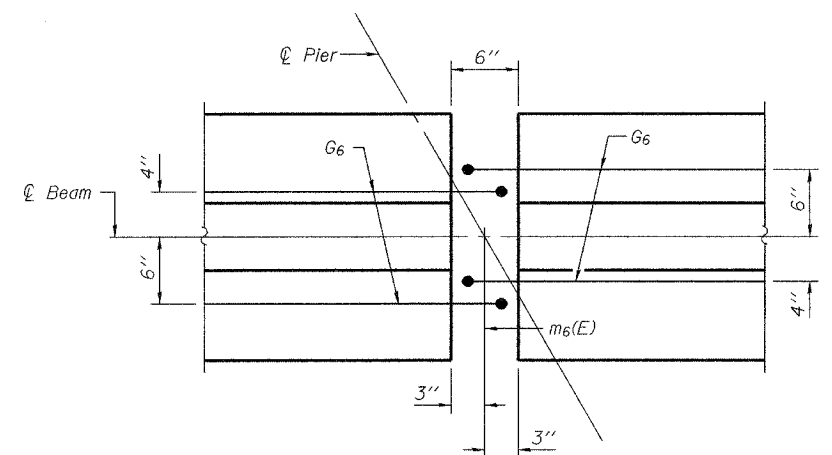
*01-00081-00-BR



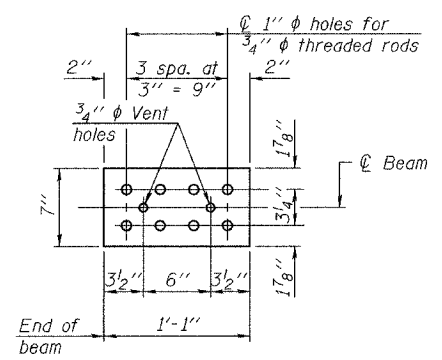
ELEVATION OF BEAM AT PIER



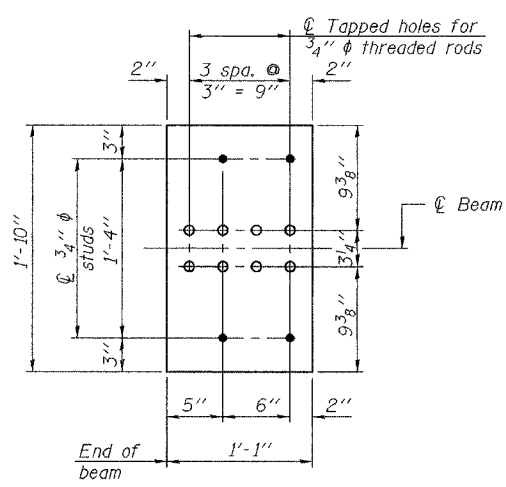
LIFTING LOOP DETAIL



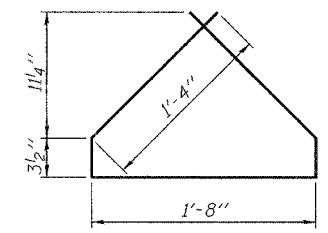
PLAN OF BEAM AT PIER



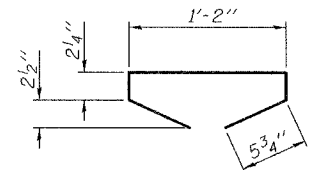
TOP PLATE



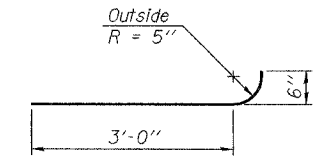
BOTTOM PLATE
See bearing details for pintle hole locations when required.



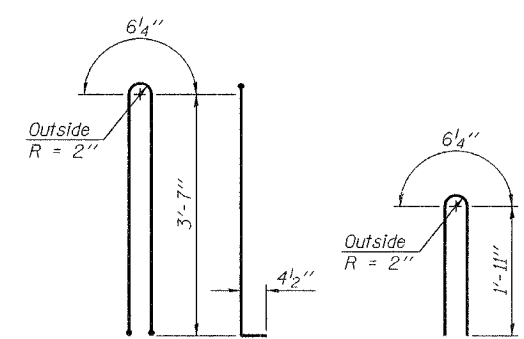
BAR G4



BAR G5



BAR G6



BAR G1

BAR G2

BILL OF MATERIAL

Item	Unit	Total
Furnishing and Erecting Precast Prestressed Concrete I-Beams, 42"	Ft.	2454

ILLINOIS DEPARTMENT OF TRANSPORTATION	
SHEET TITLE 42" PPC I-BEAM DETAILS	
PROJECT FAS ROUTE 1732 (COUNTY ROUTE 11) SECTION 01-00081-00-BR MACOUPIN COUNTY STATION 167+61.06 STRUCTURE NUMBER 059-3331	PROJECT NO. 04081 SCALE DATE 07/07/06 DRAWN BY TFC CHECKED BY GB/ML/MCB DRAWING NO.
COOMBE-BLOXDORF P.C. Engineers / Land Surveyors Springfield, Illinois Design Firm License No. 184-002703	11 OF 17 SHTS

NOTES

Inserts for 3/4" ϕ threaded dowel rods, when specified, are to be two strut, coil type for interior beams and single coil, flared loop type for exterior beams.

Prestressing steel shall be uncoated high strength, low relaxation 7-wire strand, Grade 270.

The nominal diameter shall be 1/2" and the nominal cross-sectional area shall be 0.153 sq. in.

Non-prestressing steel shall conform to AASHTO designation M-31 or M 322, Grade 60.

A minimum 2 1/2" ϕ lifting pin shall be used to engage the lifting loops during handling.

Reinforcement bars designated (E) shall be epoxy coated.

Cut G6 bars when necessary to maintain 1 1/2" clearance.

The bottom plates and studs shall be galvanized according to AASHTO Mill and ASTM A385.

Threaded rods shall be ASTM F 1554 Grade 55.

The cut strands at each beam end shall be given two coats of zinc dust spray or paint meeting the requirements of ASTM A 780. The zinc dust spray or paint shall be applied before corrosion appears and allowed to dry according to the manufacturer's specifications prior to another coat of zinc. A concrete sealer meeting the requirements of Section 587 of the Standard Specifications shall be applied to all portions of the I-beam or Bulb-T beam, except the top surface of the top flange and the bottom surface of the bottom flange, starting at each beam end and extending out a distance of 42 inches. The sealer shall be applied after visible crack growth has subsided. This work shall be performed by the producer and included with the cost of the beam.

PLOT DATE = 07/07/2006
FILE NAME = \\BEP-059-331-SP1-11-PI-4-42D.dgn
PLOT SCALE = 0.10000 1" = 1"
USER NAME = TFC