

STATE OF ILLINOIS
DEPARTMENT OF TRANSPORTATION

PLANS FOR PROPOSED
HIGHWAY BRIDGE PROGRAM

TR 442
OVER TRIBUTARY TO BIG CREEK
SECTION 05-08121-00-BR
FAYETTE COUNTY
PROJECT NO. BROS-051(75)
C-97-151-06

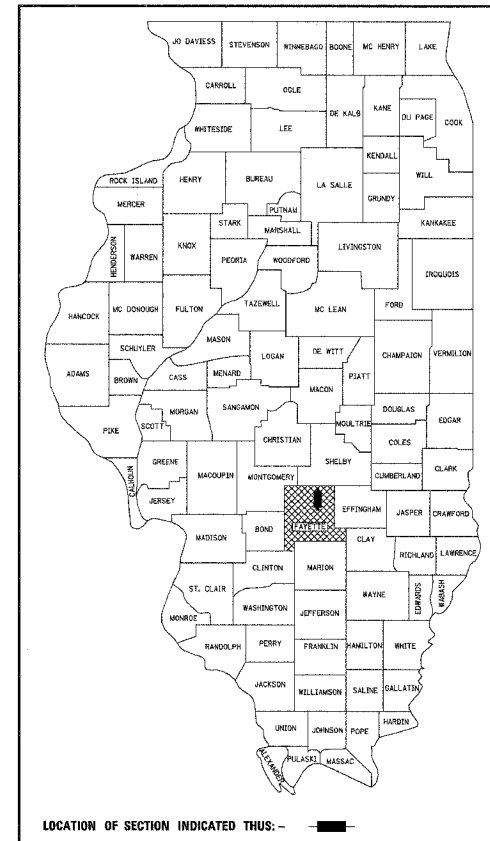
ROUTE	SECTION	COUNTY	TOTAL SHEETS	SHEET NO.
TR 442	05-08121-00-BR	FAYETTE	10	1
FED. ROAD DIST. NO. 7 ILLINOIS		FEDERAL AID PROJECT		
CONTRACT NO. 95489				

INDEX OF SHEETS

- COVER SHEET
- SUMMARY OF QUANTITIES AND TYPICAL SECTIONS
- PLAN AND PROFILE OF ROADWAY
- CROSS SECTIONS OF ROADWAY
- GENERAL PLAN AND ELEVATION
- PRECAST PRESTRESSED CONCRETE DECK BEAM DETAILS
- STEEL RAILING, TYPE S1 DETAILS
- ABUTMENT DETAILS

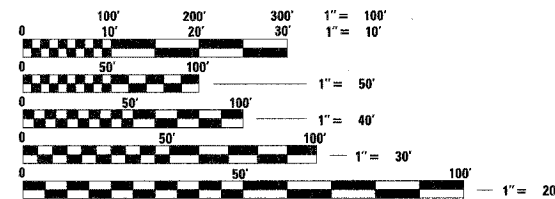
STANDARDS ARE INCLUDED IN PLANS AFTER SHEET NO. 10
 000001-04 STANDARD SYMBOLS, ABBREVIATIONS AND PATTERNS
 515001-02 NAME PLATE FOR BRIDGES
 635006-02 REFLECTOR AND TERMINAL MARKER PLACEMENT
 702001-06 TRAFFIC CONTROL DEVICES
 BLR 21-6 TYPICAL APPLICATION OF TRAFFIC CONTROL DEVICES FOR CONSTRUCTION ON RURAL LOCAL HIGHWAYS

SOIL BORINGS (SEE SPECIFICATIONS)



LOCATION OF SECTION INDICATED THUS: [shaded box]

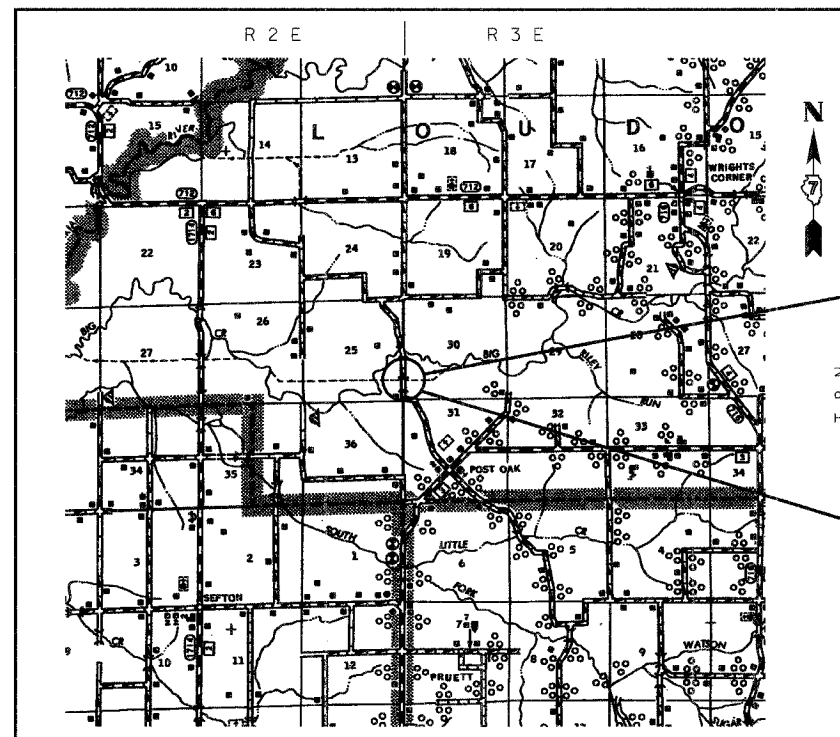
DESIGN CLASSIFICATION: RURAL LOCAL ROAD
 ADT₂₀₀₆ : 75
 ADT₂₀₂₆ : 100
 DESIGN SPEED - 30 MPH



FULL SIZE PLANS HAVE BEEN PREPARED USING STANDARD ENGINEERING SCALES, REDUCED SIZED PLANS WILL NOT CONFORM TO STANDARD SCALES. IN MAKING MEASUREMENTS ON REDUCED PLANS, THE ABOVE SCALES MAY BE USED.

J.U.L.I.E.
 JOINT UTILITY LOCATING INFORMATION FOR EXCAVATORS
 1-800-892-0123 Website: <http://www.illinois1call.com>

CONTRACT NUMBER: 95489



SECTION BEGINS
STA. 6+90.00

SECTION 05-08121-00-BR

INCLUDES THE CONSTRUCTION OF A SINGLE SPAN PRECAST PRESTRESSED CONCRETE DECK BEAM BRIDGE CARRYING TR 442 OVER TRIBUTARY TO BIG CREEK, 56'-10" BK TO BK ABUTMENTS. NO SKEW. EXISTING STRUCTURE NO. 026-3205 PROPOSED STRUCTURE NO. 026-3434

SECTION ENDS
STA. 13+15.00

LOCATION: NEAR THE NW CORNER, SW 1/4, SW 1/4, SECTION 30, T8N, R3E, 3RD P.M.
 NET LENGTH OF PROJECT: 625.00 FT = 0.118 MI

STATE OF ILLINOIS
DEPARTMENT OF TRANSPORTATION

APPROVED: 8-15, 2006
Michael S. Maty
 FAYETTE COUNTY, COUNTY ENGINEER

PASSED: 9-13, 2006
Maureen E. Kastl
 DISTRICT SEVEN ENGINEER OF LOCAL ROADS & STREETS

RELEASING FOR BID
 BASED ON LIMITED
 REVIEW: 9-13, 2006
Christ M. Reedy
 DEPUTY DIRECTOR OF HIGHWAYS, REGION FOUR ENGINEER



Gary L. Hahn 08-14-06
 GARY L. HAHN
 CENTRALIA, ILLINOIS
 ILLINOIS LICENSED PROFESSIONAL
 ENGINEER NO. 62-42606
 EXPIRES NOV. 30, 2007



Gary L. Hahn 08-14-06
 GARY L. HAHN
 CENTRALIA, ILLINOIS
 ILLINOIS LICENSED STRUCTURAL
 ENGINEER NO. 81-4853
 EXPIRES NOV. 30, 2006

RHUTASEL and ASSOCIATES, INC.
 CONSULTING ENGINEERS • LAND SURVEYORS
 CENTRALIA, ILLINOIS FREEBURG, ILLINOIS
 ILLINOIS DESIGN FIRM LICENSE NO. 184-000287

Sheet
 1
 of 10
 Job No. 51105

08/14/2006