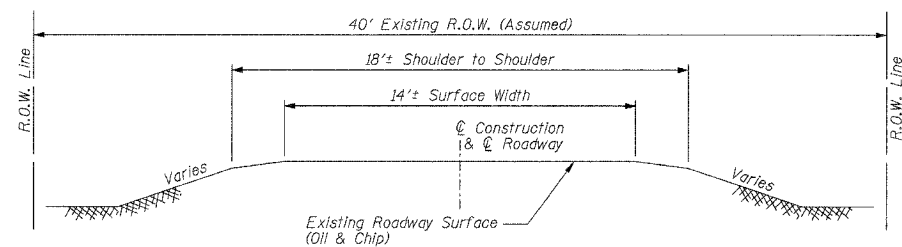
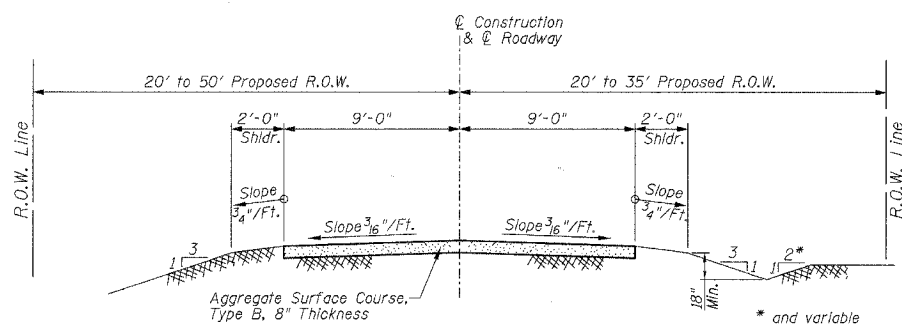


| | | | | |
|-----------------------|----------------|----------|------------------|-----------|
| ROUTE | SECTION | COUNTY | TOTAL SHEETS | SHEET NO. |
| TR 442 | 05-08121-00-BR | FAYETTE | 10 | 2 |
| FED. ROAD DIST. NO. 7 | | ILLINOIS | FED. AID PROJECT | |
| CONTRACT NO. 95489 | | | | |



**TYPICAL SECTION
EXISTING APPROACH ROADWAY**



**TYPICAL SECTION
PROPOSED APPROACH ROADWAY**
Looking Upstation (North)

SUMMARY OF QUANTITIES

| Code No. | Item | Unit | Quantity | Location | |
|-------------|---|-------|----------|----------|------|
| | | | | X081-2A | E000 |
| 20100500 | TREE REMOVAL, ACRES | ACRE | 0.3 | - | 0.3 |
| 20200100 | EARTH EXCAVATION | CU YD | 509 | - | 509 |
| 20300100 | CHANNEL EXCAVATION | CU YD | 10 | 10 | - |
| 20400800 | FURNISHED EXCAVATION | CU YD | 831 | - | 831 |
| * 20700110 | POROUS GRANULAR EMBANKMENT | TON | 36 | 36 | - |
| * 25001000 | SEEDING, CLASS 2 (SPECIAL) | ACRE | 0.8 | - | 0.8 |
| * 28100807 | STONE DUMPED RIPRAP, CLASS A4 | TON | 120 | 120 | - |
| * 40200800 | AGGREGATE SURFACE COURSE, TYPE B | TON | 637 | - | 637 |
| * 50100100 | REMOVAL OF EXISTING STRUCTURES | EACH | 1 | 1 | - |
| 50300225 | CONCRETE STRUCTURES | CU YD | 17.2 | 17.2 | - |
| 50400505 | PRECAST PRESTRESSED CONCRETE DECK BEAMS (27" DEPTH) | SQ FT | 1336 | 1336 | - |
| 50800105 | REINFORCEMENT BARS | POUND | 2660 | 2660 | - |
| 50900205 | STEEL RAILING, TYPE S1 | FOOT | 114 | 114 | - |
| ** 51201600 | FURNISHING STEEL PILES HP12X53 | FOOT | 315 | 315 | - |
| ** 51202305 | DRIVING PILES | FOOT | 315 | 315 | - |
| ** 51203600 | TEST PILE STEEL HP12X53 | EACH | 1 | 1 | - |
| 50300280 | CONCRETE ENCASEMENT | CU YD | 2.8 | 2.8 | - |
| 51500100 | NAME PLATES | EACH | 1 | 1 | - |
| * 54201069 | PIPE CULVERTS, CLASS D, TYPE 2 24" | FOOT | 104 | - | 104 |
| 67100100 | MOBILIZATION | L SUM | 1 | 1 | - |

- * See Special Provisions
- ** The Contractor shall drive one (1) Steel HP12x53 Test Pile in a permanent location at the South Abutment as directed by the Engineer before ordering the remainder of the piles.

GENERAL NOTES

This section shall be constructed in accordance with the plans, the Special Provisions, and the "Standard Specifications for Road and Bridge Construction", adopted January 1, 2007.

If Section or Subsection monuments are encountered, the Engineer shall be notified before such monuments are removed. The Contractor shall protect and carefully preserve all property markers and monuments until owner, an authorized Surveyor or agent has witnessed or otherwise referenced their location.

Any reference to a Standard in these plans shall be interpreted to mean the edition as indicated by the sub-number listed in the Index of Sheets or the copy of the Standard included in these plans.

Roadway Centerline profiles refer to the finished surface.

Existing utilities shown are located from surface observations or information provided by the respective utilities and must be considered approximate. There may be others, the exact location of which are unknown and not shown. The Contractor will be responsible for notifying the respective utilities before work is begun. Field marking of underground utilities may be obtained by providing a minimum of 48 hours advance notice through the J.U.L.I.E. system by calling 1-800-892-0123, or by direct contact with non-members of J.U.L.I.E.

The nominal thickness for surface course is shown on the Typical Sections, Standards, Schedules, or Special Details. The constructed thickness of the above item shall not be less than 90 percent of the nominal thickness at any location.

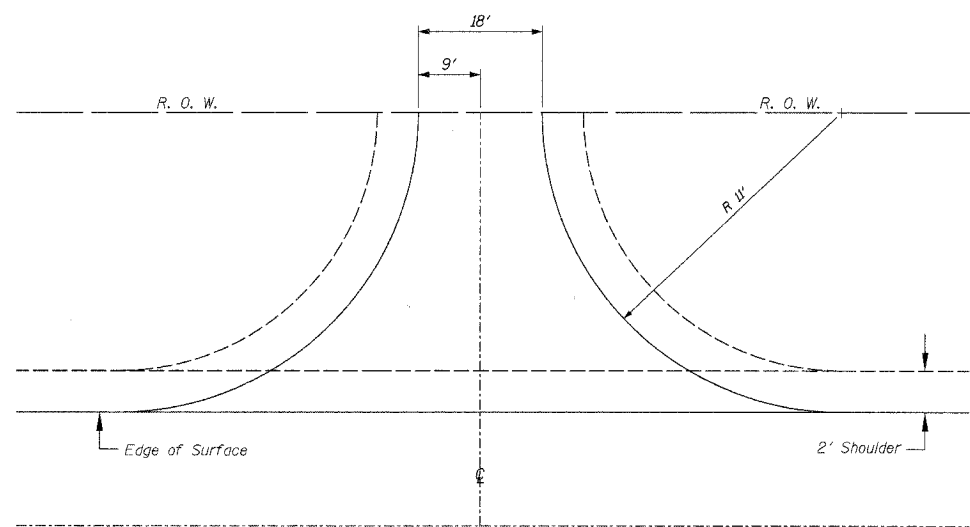
Factors used for quantity calculations are as follows:
 Porous Granular Embankment 2.1 tons/cu. yd.
 Stone Dumped Riprap 130 pounds/cu. ft.
 Aggregate Surface Course 2.1 tons/cu. yd.

UTILITIES

Telephone:
Frontier Communications
Phone: 217-854-3126

Gas:
Natural Gas Pipeline Company of America
St. Elmo, IL
Phone: 618-829-3224

Electric:
Southwestern Electric Cooperative, Inc.
Greenville, IL
Phone: 618-664-1025



TYPICAL PRIVATE ENTRANCE
Aggregate Surface Course, Type B 6" Depth
Lt., Sta. 12+38 - 10 Tons
(Included in Summary of Quantities)

**SUMMARY OF QUANTITIES AND
TYPICAL SECTIONS
PROPOSED BRIDGE CARRYING TR 442
OVER TRIBUTARY TO BIG CREEK
SECTION 05-08121-00-BR
FAYETTE COUNTY, ILLINOIS**

Sheet
2
of 10
Job No. 51105

08/14/2006