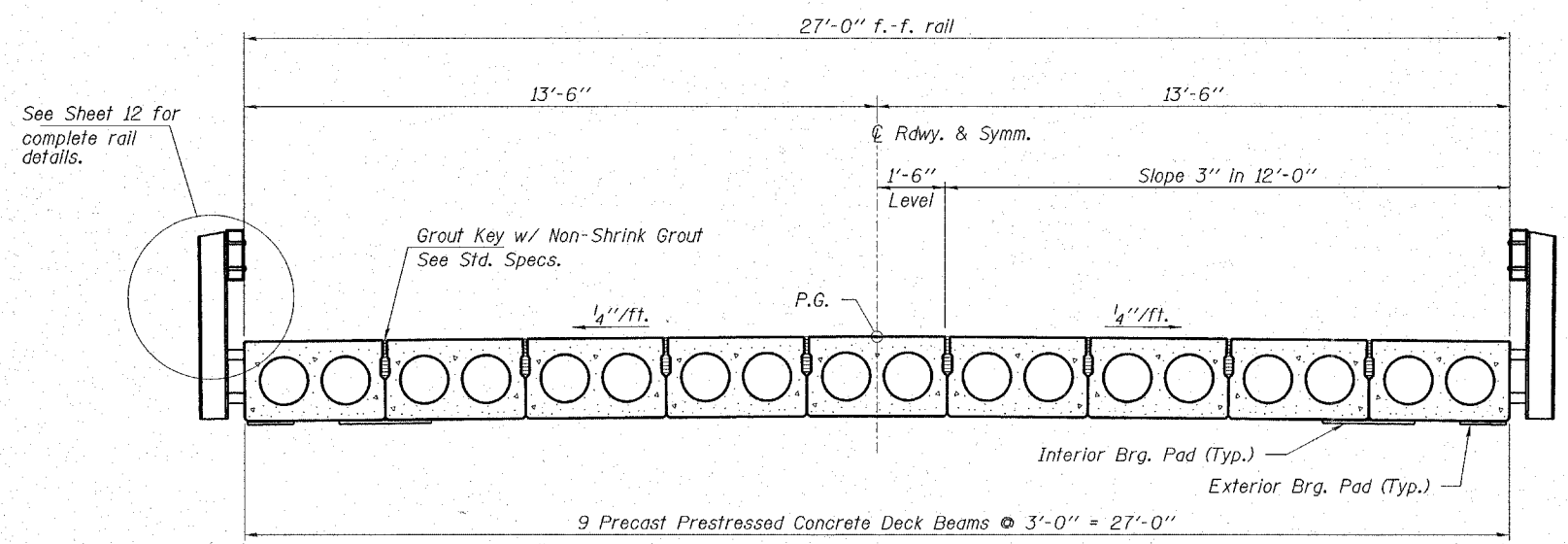
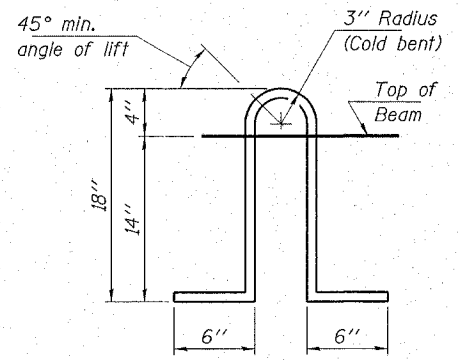


ROUTE NO.	SECTION	COUNTY	TOTAL SHEETS	SHEET NO.
T.R. 101	03-03127-00-BR	MOULTRIE	15	11
FED. ROAD DIST. NO.	ILLINOIS	FED. AID PROJECT-		

CONTRACT NO. 95490

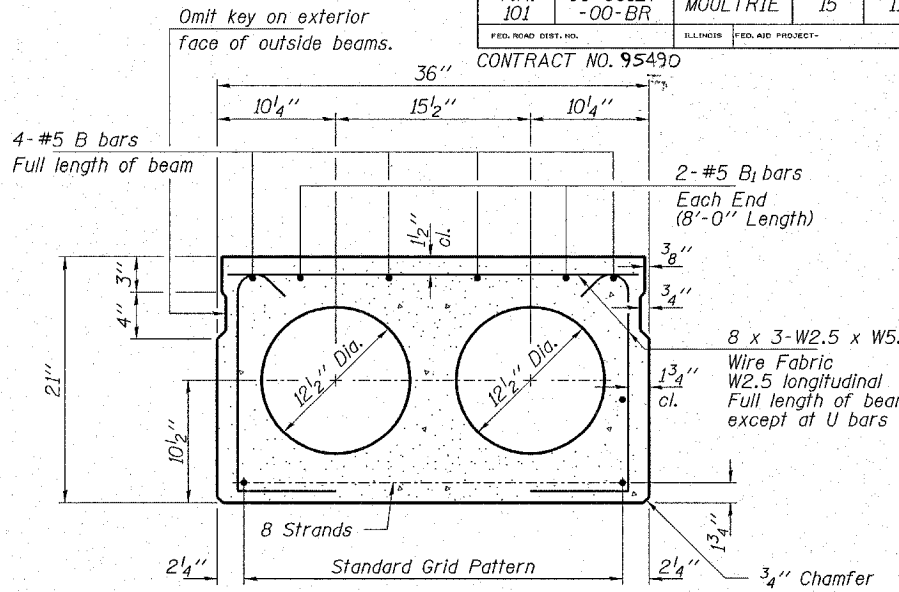


CROSS SECTION



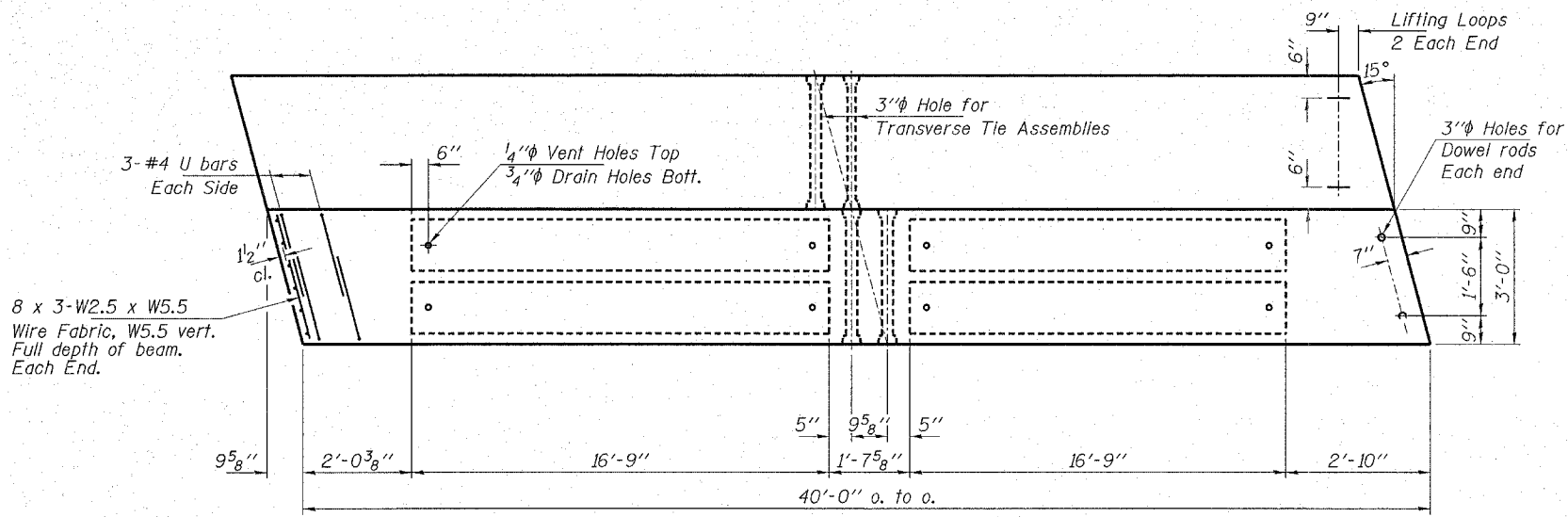
LIFTING LOOP DETAIL

Approved alternate may be substituted for the above.
Approx. Weight of 1 Beam = 24,200 lbs.

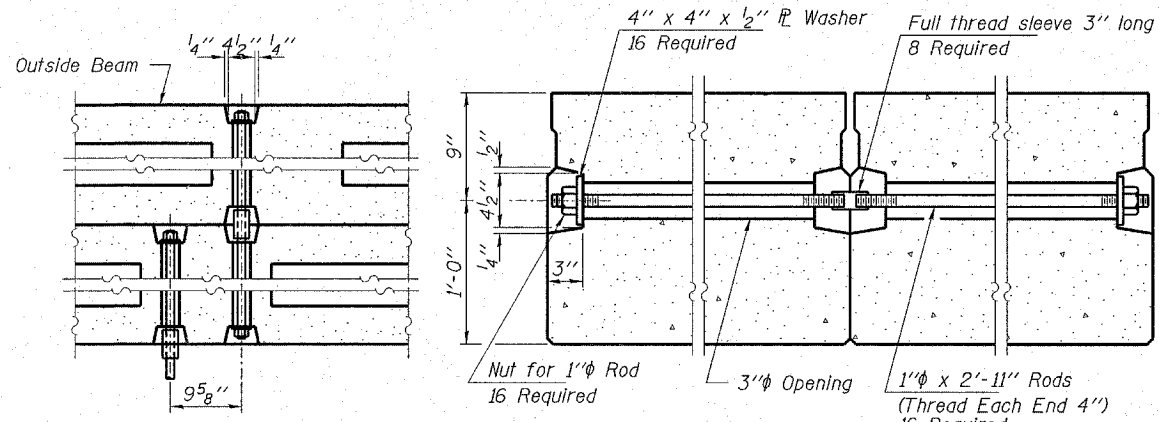


TYPICAL SECTION

Note: Place strands symmetrically about center of beam.
8-1/2" Strands, Each Strand Stressed to 30,900 Lbs.
8-Strands 1 3/4" up



PLAN



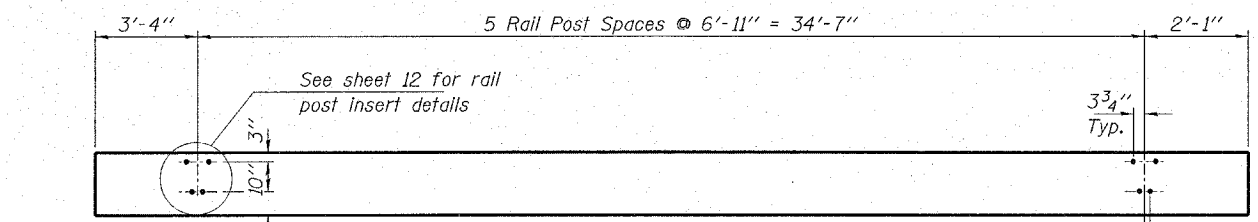
TYPICAL TRANSVERSE TIE ASSEMBLY

NOTES

Prestressing steel shall be non-galvanized high strength, low-relaxation 7-wire strand, Grade 270. The nominal diameter shall be 1/2" and the nominal cross-sectional area shall be 0.153 sq. in. Lifting loops shall be 2-1/2" phi-270 ksi strands, as shown. Reinforcement bars shall conform to the requirements of AASHTO M-31 or M-322 Grade 60. The bearing seat surfaces shall be adjusted by shimming to assure firm and even bearing. Two 1/8" fabric adjusting shims of the dimensions of the Exterior Bearing Pad shall be provided for each bearing. Keyway surfaces shall be cleaned to remove form oil or other bond breaking material prior to shipment of the beams. Cleaning shall be done by sandblasting the keyway areas between top of the beam and the bottom edge of the key. Required Release Strength, f'cl, shall be 4,000 p.s.i. The 1" phi rods in the transverse tie assembly shall be tightened to a snug fit and the threads set. Pockets that receive transverse tie bar on outside shall be filled with grout after transverse tie assembly is in place.

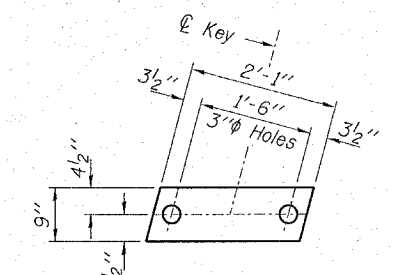
BILL OF MATERIAL

ITEM	UNIT	QUANTITY
Precast Prestressed Concrete Deck Beams (21" Depth)	Sq. Ft.	1,080

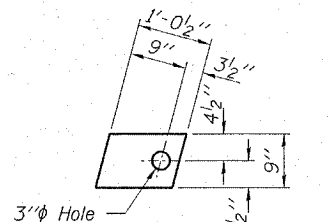


ELEVATION OF OUTSIDE BEAMS

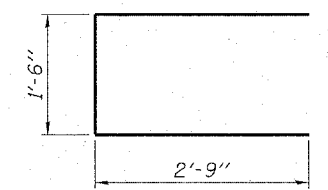
Showing Rail Post Spacing



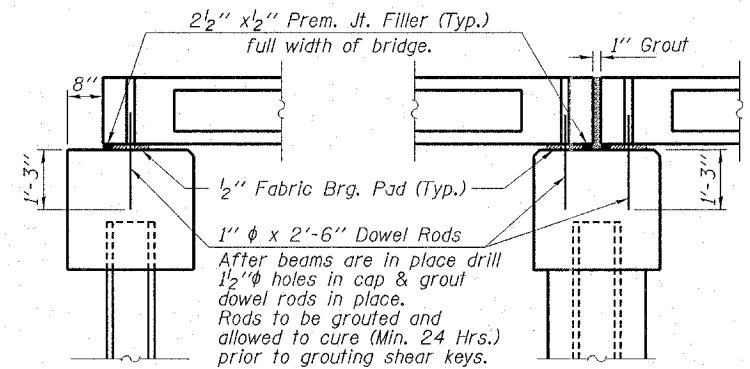
FABRIC BEARING PAD
(Interior - 16 Req'd)



FABRIC BEARING PAD
(Exterior - 4 Req'd)



BAR U



SECTION AT ABUTMENTS

SECTION AT PIERS

HAMPTON, LENZINI & RENWICK, INC.
CIVIL & STRUCTURAL ENGINEERS

3085 STEVENSON DRIVE, SUITE 201
SPRINGFIELD, ILLINOIS 62703
(217) 546-3400

ELGIN • SPRINGFIELD

PROJECT NUMBER: 12-72-0015-1 DATE: 07/12/06
DESIGNED: T.P.L. CHECKED: S.W.M. DRAWN: D.T.M.

SUPERSTRUCTURE
JONATHAN CREEK ROAD DISTRICT
SECTION 03-03127-00-BR
MOULTRIE COUNTY
STR. NO. 070-4333 / STATION 9+95