

RTE. NO.	SECTION	COUNTY	TOTAL SHEETS
C.H. 20	05-00195-00-BR	MACON	10
FED. ROAD DIST. NO.	ILLINOIS PROJECT	BRS-549(101)	1

CONTRACT NO. 95492

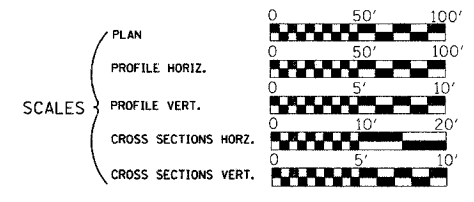
INDEX OF SHEETS

- 1 Cover Sheet
- 2 Summary of Quantities, General Notes, Typical Cross Sections and Details
- 3 Plan and Profile
- 4 Horizontal Layout
- 5-11 Station Cross Sections
- 12 Storm Water Pollution Prevention Plan
- 13-18 Bridge Plans

STATE OF ILLINOIS  
DEPARTMENT OF TRANSPORTATION  
DIVISION OF HIGHWAYS  
**PLANS FOR PROPOSED  
LOCAL AGENCY IMPROVEMENT**

LIST OF STANDARDS

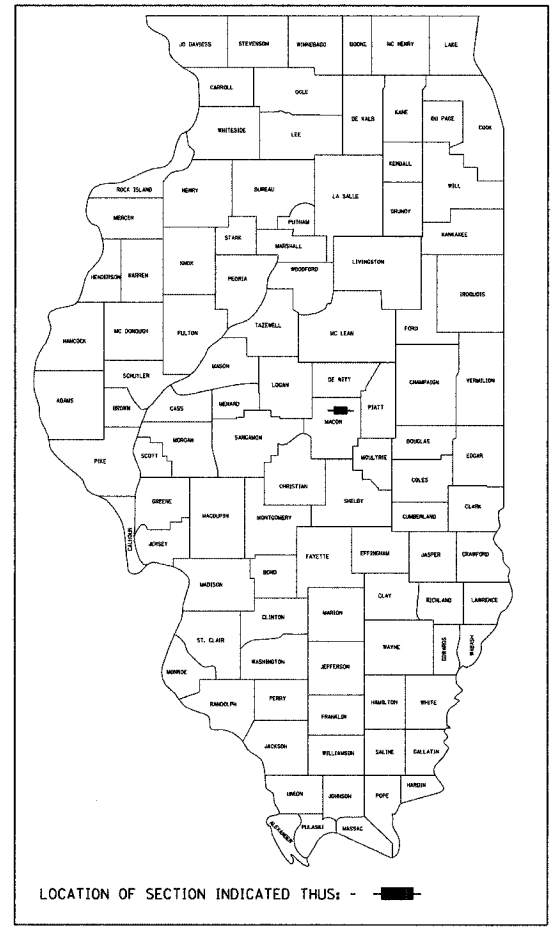
- Standard 000001-04 Standard symbols, abbreviations and patterns
- Standard 280001-03 Temporary erosion control systems
- Standard 515001-02 Name plate for bridges
- Standard 630001-07 Steel Plate Beam Guardrail
- Standard 630301-04 Shoulder Widening for Type 1 (Special) Guardrail Terminals
- Standard 631032-03 Traffic Barrier Terminal Type 6A
- Standard 635006-02 Reflective and Terminal Marker Placement
- Standard 701011-01 Off-road moving operations, 2-l, 2-w, day only, for speeds > 45 mph
- Standard 701301-02 Lane closure, 2-l, 2-w, short time operations
- Standard 702001-06 Traffic control devices
- Standard BLR-21-6 Typical application of traffic control devices for Construction on Rural Local Highways
- Standard BLR-22-4 Typical application of traffic control devices 2-l, 2-w, rural, Road closed to Thru Traffic



ROADWAY CLASSIFICATION: MAJOR COLLECTOR  
2025 ADT = 2200 (2.0% TRUCKS)  
2025 DHV = 285  
DESIGN SPEED: 55 MPH

HIGHWAY BRIDGE PROGRAM  
C.H. 20 OVER DRAINAGE DITCH  
SECTION 05-00195-00-BR  
MACON COUNTY  
PROJECT BRS-549(101)

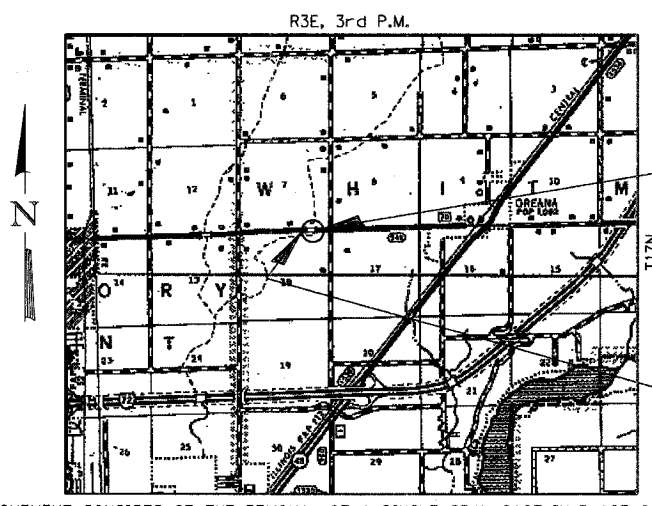
C-97-023-07



JOINT UTILITY LOCATING INFORMATION FOR EXCAVATORS  
J.U.L.I.E. Telephone No. Toll Free 1-800-892-0123

CONTRACT NO. : 95492

**URS**  
345 EAST ASH AVENUE, SUITE B  
DECATUR, ILLINOIS 62526  
PH. 217-875-4800



IMPROVEMENT ENDS  
STA. 19+50.00

EXIST. STR. NO. 058-3012  
PROP. STR. NO. 058-3377

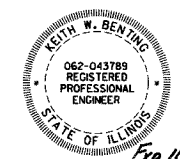
IMPROVEMENT BEGINS  
STA. 10+85.00

IMPROVEMENT CONSISTS OF THE REMOVAL OF A SINGLE SPAN CAST-IN-PLACE CONCRETE SLAB WITH ONE PRECAST DECK BEAM ON EACH SIDE ON CLOSED CONCRETE ABUTMENTS WITH CONCRETE WINGWALLS. 0-0 DECK = 30'-2", BK.-BK. ABUTMENTS = 25'-0" AND THE CONSTRUCTION OF A SINGLE SPAN PRECAST PRESTRESSED CONCRETE DECK BEAM BRIDGE ON CONCRETE SPILL THRU ABUTMENTS. TOTAL LENGTH = 69'-6 3/8", WIDTH = 32'-0" 0-0. DECK AND NECESSARY APPROACH ROADWAY WORK.

LAYOUT

Approximate Scale: scale 1 mile

Total and Net Length of Improvement 865.00 Feet = 0.164 Miles



*Keith M. Benting*  
Illinois Professional No. 43789

APPROVED October 19 2006  
COUNTY ENGINEER

PASSED Michael J. [Signature] 2006  
DISTRICT SEVEN ENGINEER OF LOCAL ROADS & STREETS

Releasing For Bid Based on Limited Review Christi M. [Signature] 11/8 2006  
DEPUTY DIRECTOR OF HIGHWAYS, REGION FOUR ENGINEER

STATE OF ILLINOIS  
DEPARTMENT OF TRANSPORTATION

10/18/2006  
Date