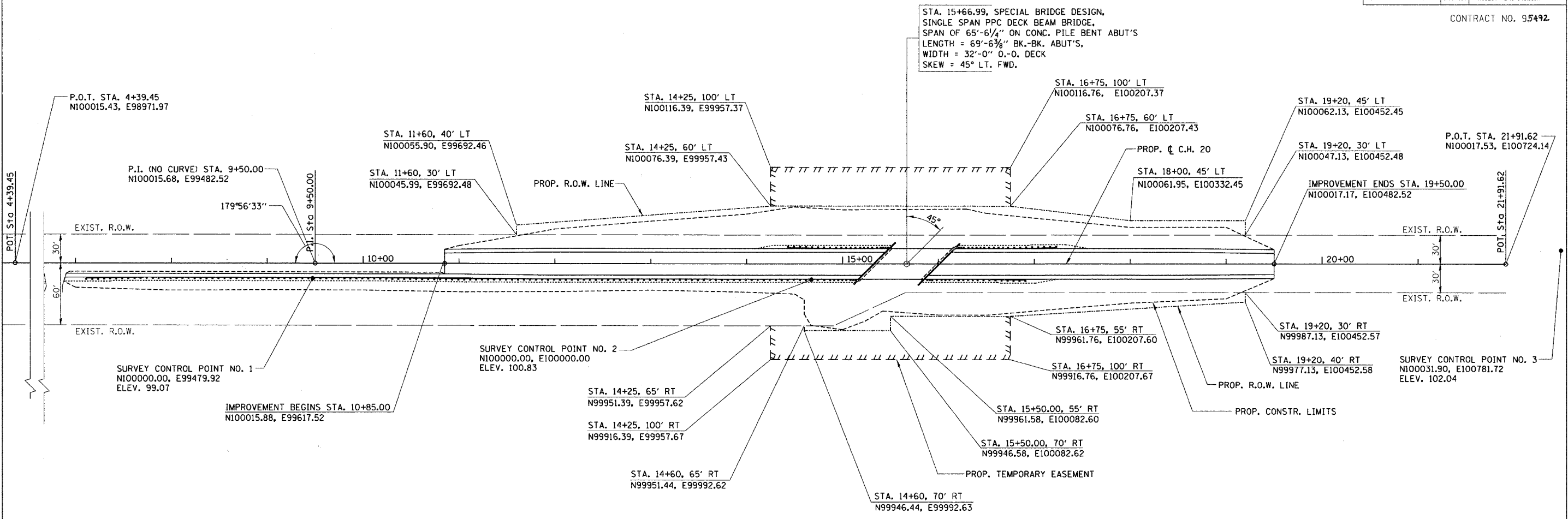


RTE.	SECTION	COUNTY	TOTAL SHEETS	SHEET NO.
C.H. 20	05-00195-00-BR	MACON	18	4
STA. 10+00.00 TO STA. 20+60.00				
FED. ROAD DIST. NO.	ILLINOIS	PROJECT	BRS-549(101)	

CONTRACT NO. 95492



PROPOSED STRUCTURE LAYOUT

WEST ABUTMENT

BK. OF W. ABUT. STA. 15+32.22
 N100016.55, E100064.74

☐ W. ABUT. STA. 15+33.99
 N100016.55, E100066.51

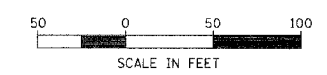
FACE OF W. ABUT. STA. 15+35.76
 N100016.55, E100068.28

EAST ABUTMENT

BK. OF E. ABUT. STA. 16+01.75
 N100016.65, E100134.27

☐ E. ABUT. STA. 15+99.98
 N100016.65, E100132.50

FACE OF E. ABUT. STA. 15+98.21
 N100016.65, E100130.73



NOTE:
 FOR TIE POINTS AND BENCHMARK LOCATION,
 SEE SHEET 3 OF 18.

HORIZONTAL LAYOUT