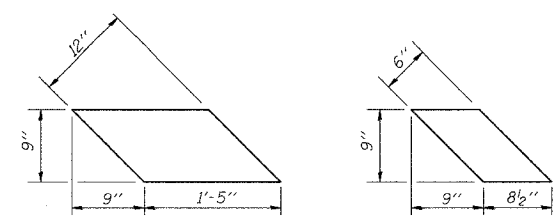


ROUTE NO.	SECTION	COUNTY	TOTAL SHEETS	SHEET NO.
C.H. 20	05-00195-00-BR	MACON	18	14
FED. ROAD DIST. NO.		ILLINOIS PROJECT:		

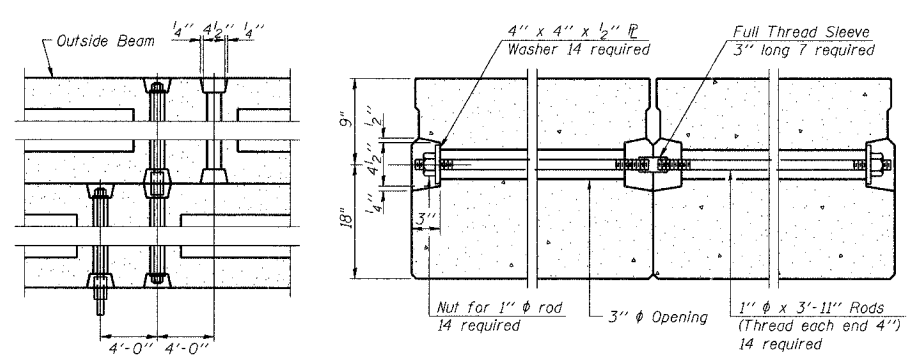
CONTRACT NO. 95492



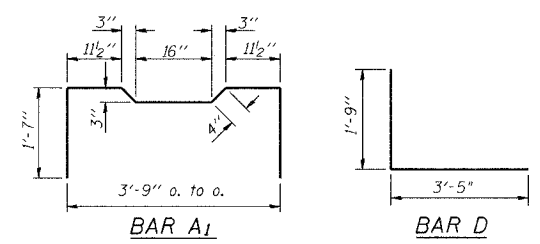
FABRIC BEARING PAD
(Interior) **FABRIC BEARING PAD**
(Exterior)

FIXED

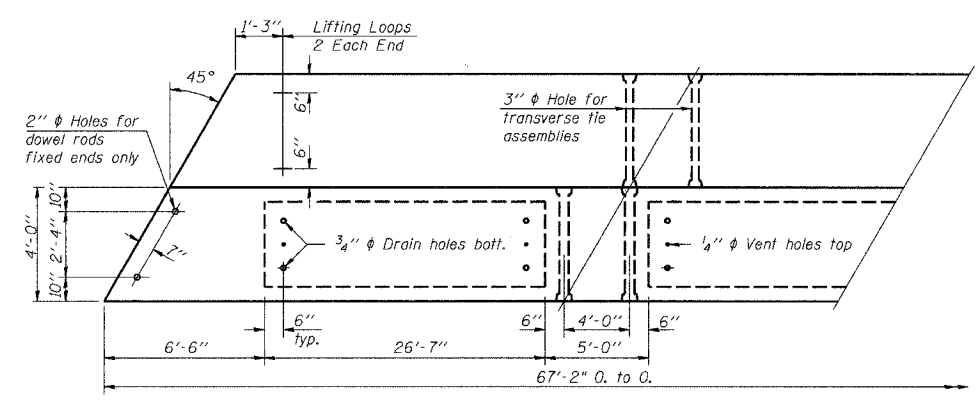
Note: Alternate Bearing Pads Required for Skews > 30°
(See Fig. 2.3.25 of IDOT Prestressed Manual)



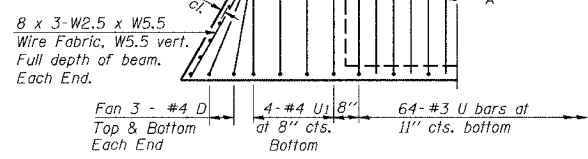
TYPICAL TRANSVERSE TIE ASSEMBLY



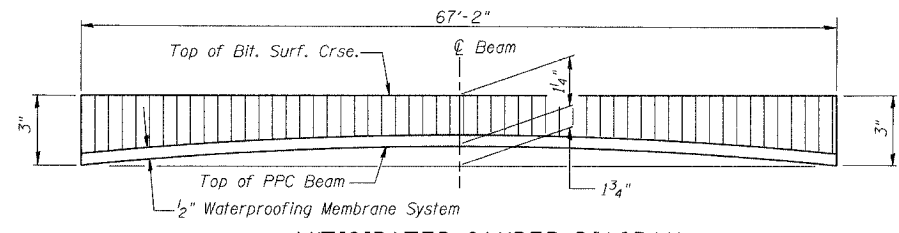
BAR A1 **BAR D**



PLAN



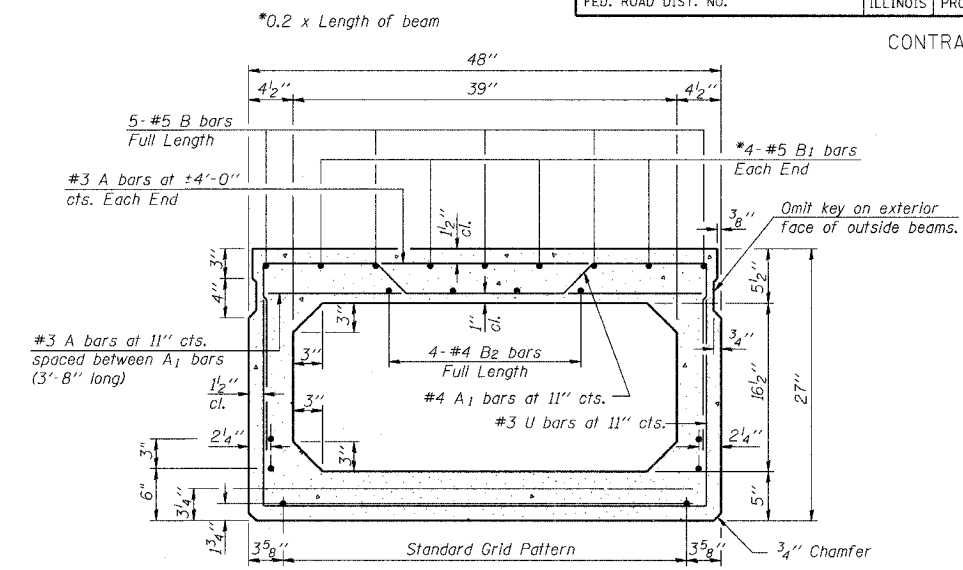
END PLAN



ANTICIPATED CAMBER DIAGRAM

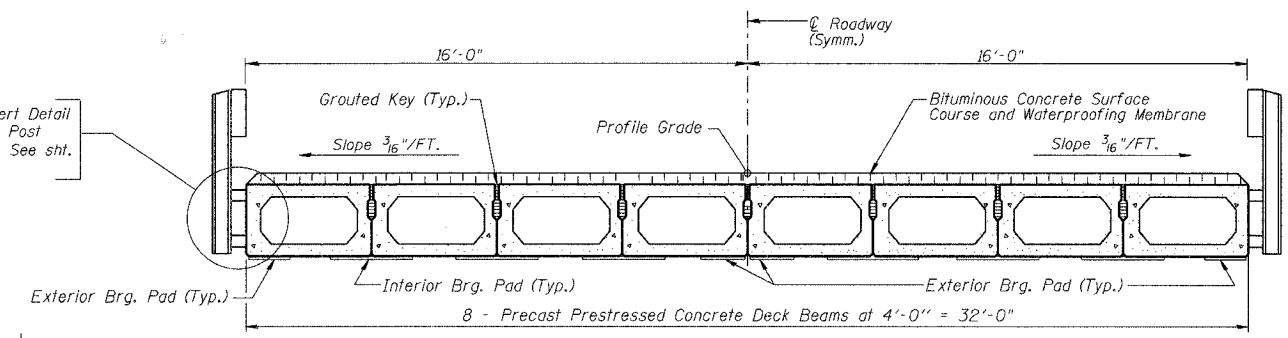
NOTES

- Prestressing steel shall be uncoated high strength, low relaxation 7-wire strand, Grade 270.
- The nominal diameter shall be 1/2 inch and the nominal cross-sectional area shall be 0.153 sq. in.
- Lifting loops shall be 3 1/2 inch diameter 270 ksi strands, as shown.
- The 1 inch diameter rods in the transverse tie assembly shall be tightened to a snug fit and the threads set. Pockets that receive transverse tie bar on outside shall be filled with grout after transverse tie assembly is in place.
- Non prestressing steel shall conform to AASHTO M-31 or M-322, Grade 60.
- The bearing seat surfaces shall be adjusted by shimming to assure firm and even bearing. Two 1/2 inch fabric adjusting shims of the dimensions of the Exterior Bearing Pad shall be provided for each bearing.
- Keyway surfaces shall be cleaned to remove form oil or other bond breaking material prior to shipment of the beams. Cleaning shall be done by sandblasting the keyway areas between top of the beam and the bottom edge of the key.
- Corrosion Inhibitor, as covered in the Special Provisions, shall be used in the concrete for precast prestressed concrete deck beams.
- Required Release Strength, f'ci, shall be 4,000 p.s.i.
- When a waterproofing membrane is specified, the top surface of the beams shall be screeded with a straightedge and finished with a hand float. The finished surface shall be free of depressions or high spots with sharp corners and the top edge of keys shall be rounded or chamfered a minimum of 1/4 inch.
- After beams have been erected, holes shall be drilled into substructure and anchor dowels placed. Dowel holes shall be filled with non-shrink grout to top of beam and allowed to cure min. 24 hrs. prior to grouting the shear keys.
- Longitudinal keys shall be grouted.



TYPICAL SECTION

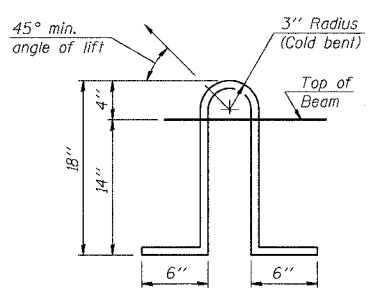
21 1/2 inch diameter Strands, Each Strand Stressed to 30,900 Lbs.
13 Strands 1 3/4 inch up, 4 Strands 3/4 inch up,
2 Strands 6 inch up, and 2 Strands 9 inch up
Note: Place strands symmetrically about centerline of beam.



CROSS SECTION

BILL OF MATERIAL

Item	Unit	Qty.
Hot-Mix Asphalt Surface Course, Mix "C", N 50	Ton	24.6
Waterproofing Membrane System	Sq Yd	239
Portland Cement Mortar Fairing Course	Foot	470
Precast Prestressed Conc. Deck Bms. 27"	Sq. Ft.	2149



LIFTING LOOP DETAIL

SUPERSTRUCTURE		Sheet No.
Date	Designed MJP	C.H. 20 OVER DRAINAGE DITCH SECTION 05-00195-00-BR MACON COUNTY STA. 15+66.99 PROP. STR. NO. 058-3377
Revisions	Drawn MLS	
	Checked KWB	
	Approved KWB	
Prepared by:	URS 345 East Ash Avenue Decatur, IL 62526	2 of 6
		URS Job No. 36431466