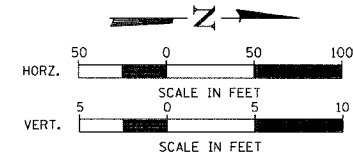


| ROUTE | SECTION | COUNTY | TOTAL SHEETS | SHEET NO. |
|---------------------|----------------|------------------|--------------|-----------|
| T.R. 34 | 05-07157-00-BR | MACON | II | 4 |
| STA. 8+85.92 | | TO STA. 20+95.19 | | |
| FED. ROAD DIST. NO. | ILLINOIS | PROJECT: | BROS-115(5) | |
| CONTRACT NO. 95494 | | | | |

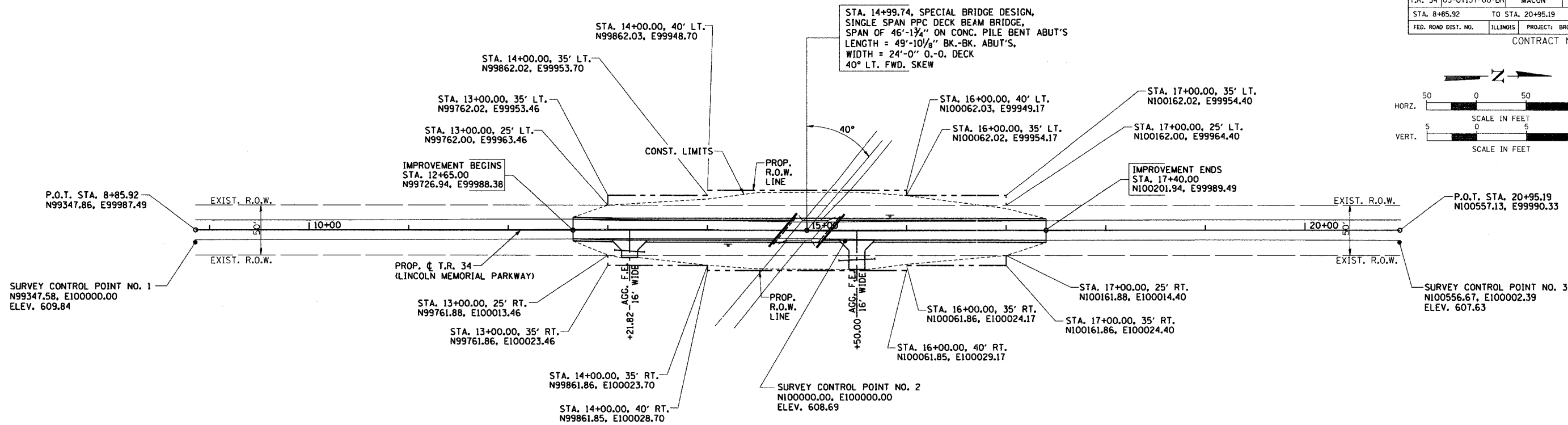


| DATE | BY |
|------|----|
| | |
| | |

| PLAN | DATE | BY |
|------|------|----|
| | | |
| | | |

| DATE | BY |
|------|----|
| | |
| | |

| PROFILE | DATE | BY |
|---------|------|----|
| | | |
| | | |



PROPOSED STRUCTURE LAYOUT

SOUTH ABUTMENT

BK. OF S. ABUT. STA. 14+74.82
N99936.76, E99988.87

CL S. ABUT. STA. 14+76.45
N99938.39, E99988.88

FACE OF S. ABUT. STA. 14+78.08
N99940.02, E99988.88

NORTH ABUTMENT

BK. OF N. ABUT. STA. 15+24.66
N99986.60, E99988.99

CL N. ABUT. STA. 15+23.03
N99984.97, E99988.99

FACE OF N. ABUT. STA. 15+21.40
N99983.34, E99988.98

NOTE:
FOR TIE POINTS AND BENCHMARK LOCATION,
SEE SHEET 3 OF 11.

HORIZONTAL LAYOUT