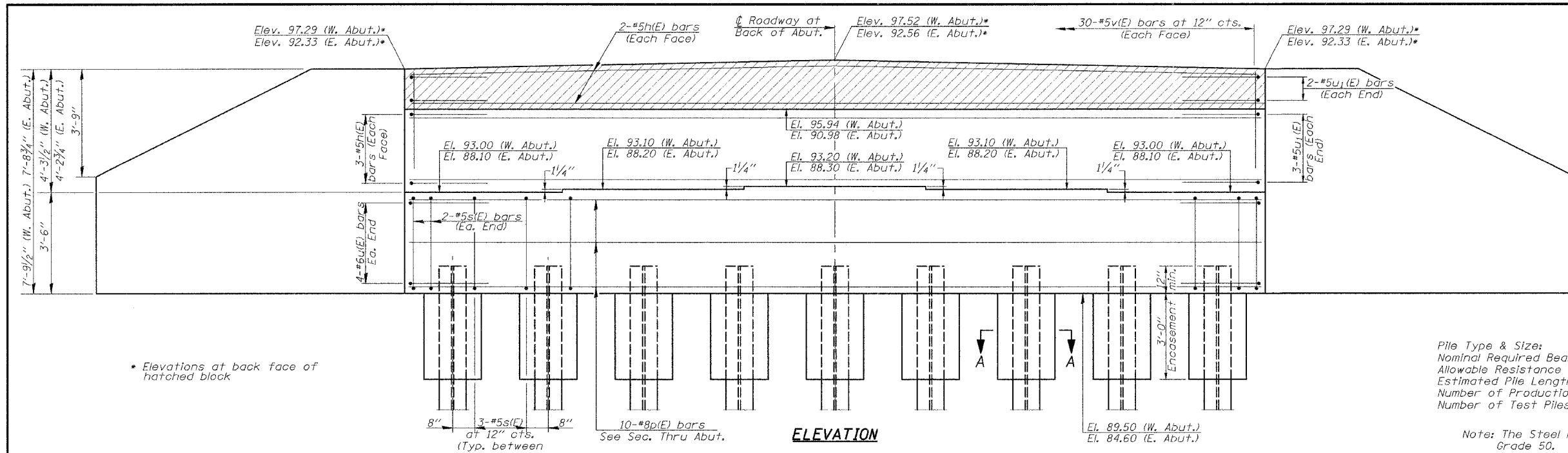


ROUTE NO.	SECTION	COUNTY	TOTAL SHEETS	SHEET NO.
F.A.P. 731	*	GREENE	30	19
FED. ROAD DIST. NO.	ILLINOIS	FED. AID PROJECT		
FEDERAL AID PROJECT				

01-00071-00-BR
CONTRACT NO. 97289
 Sheet No. 15 of 23 Sheets

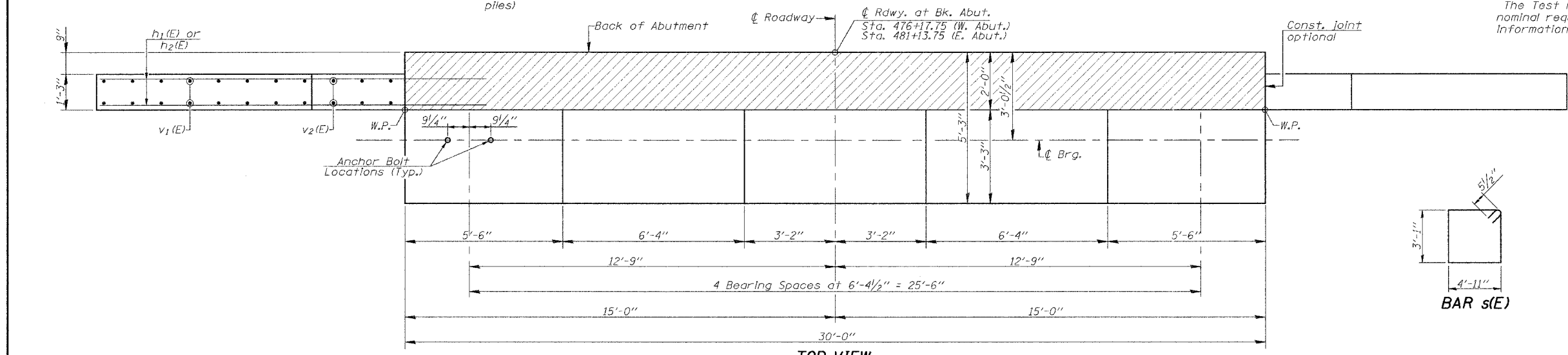


* Elevations at back face of hatched block

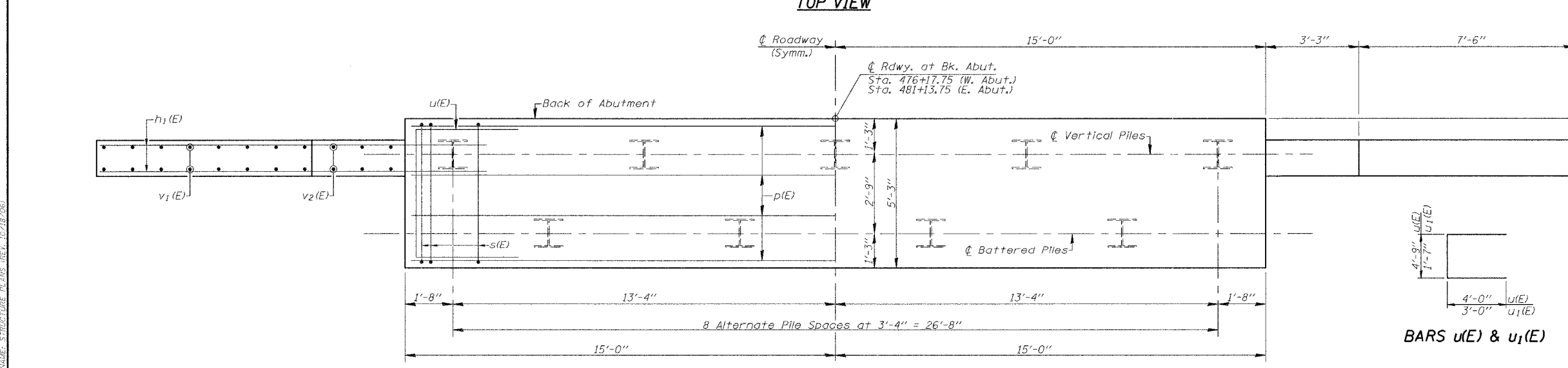
PILE DATA

	W. Abut.	E. Abut.
Pile Type & Size:	Steel HP 12x53	Steel HP 12x53
Nominal Required Bearing:	418.5 kips	418.5 kips
Allowable Resistance Available: Driven to refusal	70'	55'
Estimated Pile Length:	8	1
Number of Production:	1	1
Number of Test Piles:		

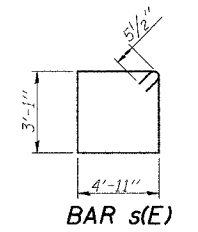
Note: The Steel H-piles shall be according to AASHTO M 270, Grade 50.
 The Test Piles shall be driven to 110 percent of the nominal required bearing indicated in the pile data information.



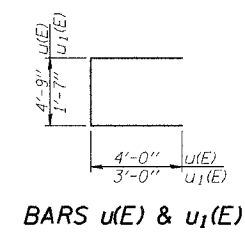
TOP VIEW



PLAN-PILE CAP



BAR s(E)



BARS u(E) & u1(E)

TWO ABUTMENTS BILL OF MATERIAL

Bar	No.	Size	Length	Shape
h(E)	20	#5	29'-8"	-----
h1(E)	56	#6	13'-1"	-----
h2(E)	16	#5	11'-0"	-----
p(E)	20	#8	29'-8"	-----
s(E)	56	#5	16'-11"	□
u(E)	16	#6	12'-9"	□
u1(E)	20	#5	7'-7"	□
v(E)	120	#5	6'-1"	-----
v1(E)	32	#4	11'-0"	-----
v2(E)	24	#4	7'-4"	-----
Structure Excavation		Cu. Yd.	301	
Concrete Structures		Cu. Yd.	67.3	
Reinforcement Bars, Epoxy Coated		Pound	6055	
Furnishing Steel Piles		Foot	1000	
Driving Steel Piles		Foot	1000	
Test Pile, Steel HP 12x53		Each	2	

Reinforcement bars designated (E) shall be epoxy coated.
 Work this with Sheet 16 of 23.

ABUTMENTS
 F.A.S. 731 - C.H. 2
 OVER APPLE CREEK
 SECTION 01-00071-00-BR
 GREENE COUNTY

FILE NAME: STRUCTURE PLANS (REV. 10/18/06)

A-1 10-22-04