

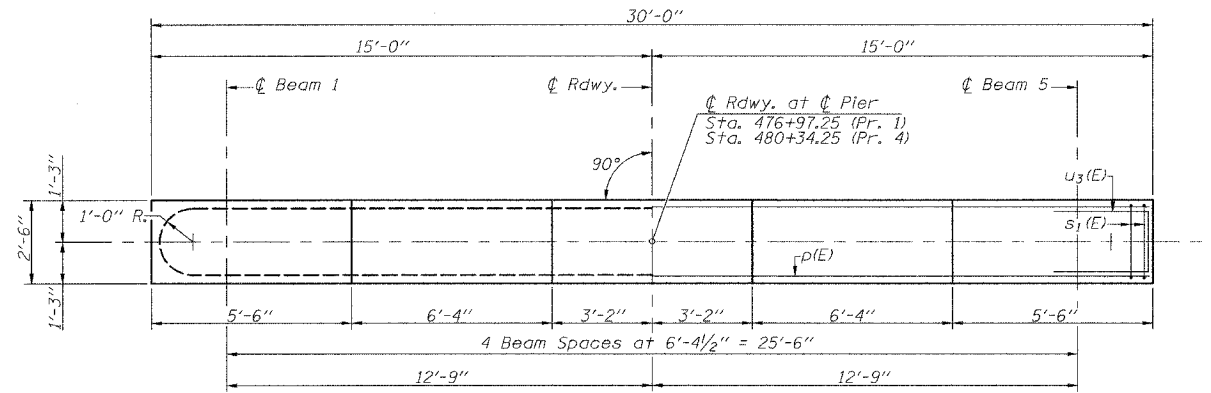
ROUTE NO.	SECTION	COUNTY	TOTAL SHEETS	SHEET NO.
F.A.P. 731	*	GREENE	30	21
FED. ROAD DIST. NO.	ILLINOIS	FED. AID PROJECT		
FEDERAL AID PROJECT				

01-00071-00-BR
CONTRACT NO. 97289 Sheet No. 17 of 23 Sheets

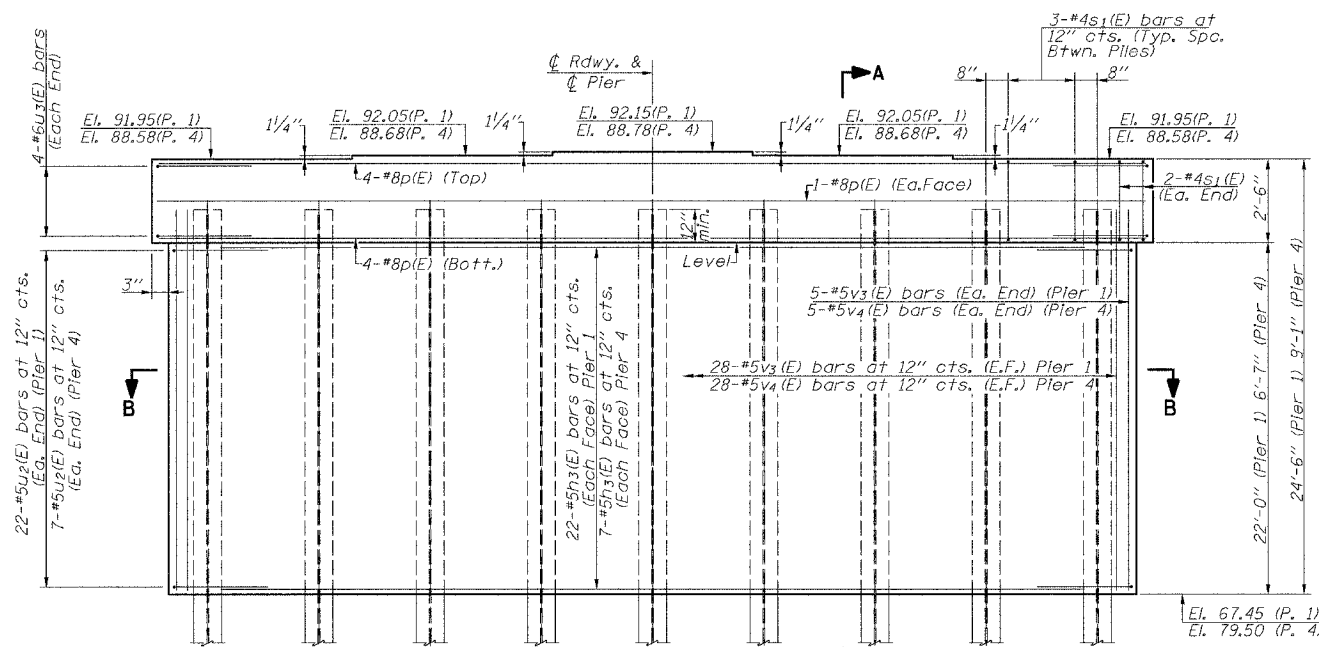
PILE DATA

Pier No. 1	Pier No. 4
Steel HP 12x53	Steel HP 12x53
Nominal Required Bearing: 418.5 kips	418.5 kips
Allowable Resistance Available: Driven to refusal	Driven to refusal
Estimated Pile Length: 60'	50'
Number of Production: 8	8
Number of Test Piles: 1	1

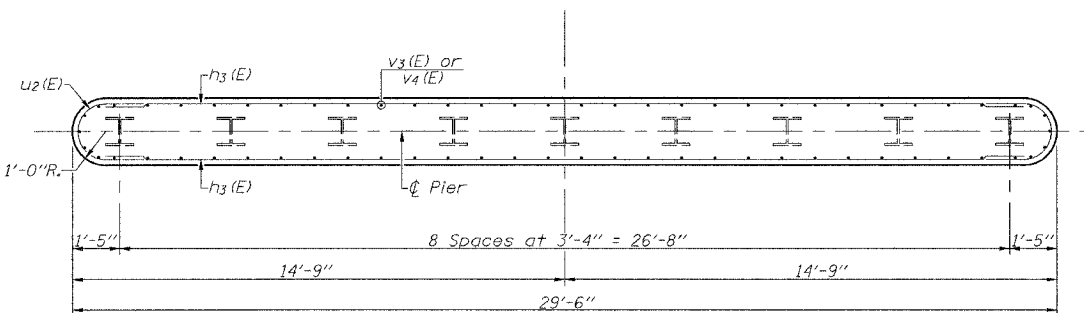
Note: The Steel H-piles shall be according to AASHTO M 270, Grade 50.
The Test Piles shall be driven to 110 percent of the nominal required bearing indicated in the pile data information.



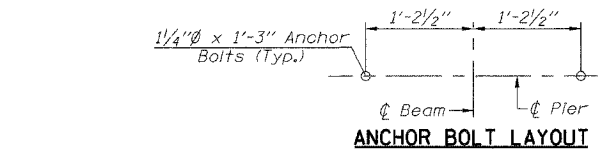
TOP PLAN



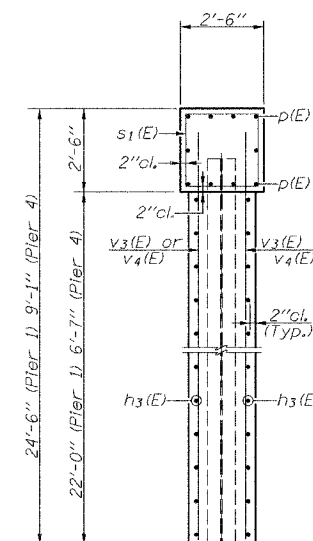
ELEVATION



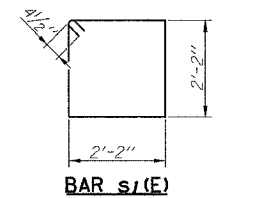
SECTION B-B



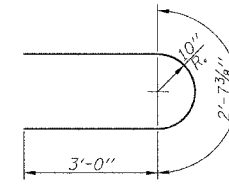
ANCHOR BOLT LAYOUT



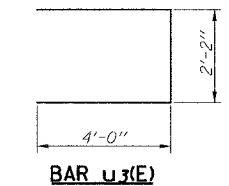
SECTION A-A



BAR s1(E)



BAR u2(E)



BAR u3(E)

TWO PIERS BILL OF MATERIAL

BAR	NO.	SIZE	LENGTH	SHAPE
h3(E)	58	#5	27'-6"	—
p(E)	20	#8	29'-8"	—
s1(E)	56	#4	9'-5"	□
u2(E)	58	#5	8'-8"	U
u3(E)	16	#6	10'-2"	U
v3(E)	66	#5	23'-2"	—
v4(E)	66	#5	7'-9"	—
Concrete Structures		Cu. Yd.	76.0	
Reinforcement Bars, Epoxy Coated		Pound	6500	
Furnishing Steel Piles HP 12x53		Foot	880	
Driving Piles		Foot	880	
Test Pile, Steel HP 12x53		Each	2	
Structure Excavation		Cu. Yd.	126	
Underwater Structure Excavation Protection - Location 1 (Pier 1) Each			1	
Underwater Structure Excavation Protection - Location 2 (Pier 4) Each			1	

Notes:
Pour steps monolithically with pier.
All edges shall have standard 3/4" chamfers except as noted.
Reinforcement bars designated (E) shall be epoxy coated.

PIERS 1 & 4
F.A.S. 731 - C.H. 2
OVER APPLE CREEK
SECTION 01-00071-00-BR
GREENE COUNTY