

FAP RTE.	SECTION	COUNTY	TOTAL SHEETS	SHEET NO.
331	3-2, 8X-1, 4-2	SALINE	233	9
STA.		TO STA.		
FED. ROAD DIST. NO.		ILLINOIS FED. AID PROJECT		

SUMMARY OF QUANTITIES
US 45 - IL 13 RELOCATION - CONTRACT 5

COUNTY:	SALINE	
LOCATION:	URBAN	
CONSTRUCTION TYPE CODE:	1000-2A	Y031-1F
FUNDING:	FED 80% STATE 20%	FED 80% STATE 20%

CODE NUMBER	ITEM DESCRIPTION	UNIT	TOTAL QUANTITY	ROAD FOUR LANE	TRAFFIC SIGNAL
88500200	INDUCTIVE LOOP DETECTOR WITH SYSTEM OUTPUT	EACH	10		10
88600100	DETECTOR LOOP, TYPE 1	FOOT	2559		2559
A2C015G3	TREE, BETULA NIGRA (RIVER BIRCH), CONTAINER GROWN, 3-GALLON	EACH	150	150	
A2C022G3	TREE, CARYA ILLINOENSIS (PECAN), CONTAINER GROWN, 3-GALLON	EACH	170	170	
A2C030G3	TREE, FAGINUS PENNSYLVANICA (GREEN ASH), CONTAINER GROWN, 3-GALLON	EACH	150	150	
A2C021G3	TREE, CARYA LACINIOSA (SHELLBARK HICKORY), CONTAINER GROWN, 3-GALLON	EACH	170	170	
A2C040G3	TREE, PLATANUS OCCIDENTALIS (SYCAMORE), CONTAINER GROWN, 3-GALLON	EACH	150	150	
A2C050G3	TREE, QUERCUS BICOLOR (SWAMP WHITE OAK), CONTAINER GROWN, 3-GALLON	EACH	170	170	
A2C062G3	TREE, QUERCUS SHUMARDII (SHUMARD OAK), CONTAINER GROWN, 3-GALLON	EACH	170	170	
A2C060G3	TREE, QUERCUS PALUSTRIS (PIN OAK), CONTAINER GROWN, 3-GALLON	EACH	170	170	
X0300737	RADIO TRANSCEIVER	EACH	2		2
XX006661	UNINTERRUPTIBLE POWER SUPPLY	EACH	2		2
X0322729	MATERIAL TRANSFER DEVICE	TON	SEE TABLE 1	SEE TABLE 1	
X0322959	WEED CONTROL, NON-SELECTIVE AND NON-RESIDUAL (WETLAND)	GALLON	3,204	3,204	
X0323984	PORTABLE TEMPORARY BARRIER SYSTEM	FOOT	100	100	
X0488100	REMOVING EXISTING SEPTIC TANK	EACH	1	1	
X6700410	ENGINEERS FIELD OFFICE, TYPE A SPECIAL	CAL MO	20	20	
*XX003813	ELECTRIC CABLE IN CONDUIT, NO. 10 3/C	FOOT	705		705
X0712400	TEMPORARY PAVEMENT	SQ YD	1,400	1,400	
Z0000940	AGGREGATE FOR DRIVEWAY MAINTENANCE	TON	1,000	1,000	
Z0022800	FENCE REMOVAL	FOOT	3349	3349	
X0325613	REMOVE SURFACE MOUNT LANE SEPARATOR	FOOT	275	275	
X0325614	RE-ERECT SURFACE MOUNT LANE SEPARATOR	FOOT	135	135	
⊙ Z0076600	TRAINEES	hour	1500	1500	
Z0007601	BUILDING REMOVAL NO. 1	L SUM	1	1	
Z0007602	BUILDING REMOVAL NO. 2	L SUM	1	1	
Z0007603	BUILDING REMOVAL NO. 3	L SUM	1	1	
Z0007605	BUILDING REMOVAL NO. 5	L SUM	1	1	
Z0007606	BUILDING REMOVAL NO. 6	L SUM	1	1	
Z0007607	BUILDING REMOVAL NO. 7	L SUM	1	1	
Z0007608	BUILDING REMOVAL NO. 8	L SUM	1	1	
Z0007609	BUILDING REMOVAL NO. 9	L SUM	1	1	
Z0007610	BUILDING REMOVAL NO. 10	L SUM	1	1	
Z0007611	BUILDING REMOVAL NO. 11	L SUM	1	1	
Z0007612	BUILDING REMOVAL NO. 12	L SUM	1	1	
Z0007613	BUILDING REMOVAL NO. 13	L SUM	1	1	
Z0007614	BUILDING REMOVAL NO. 14	L SUM	1	1	
Z0007615	BUILDING REMOVAL NO. 15	L SUM	1	1	
Z0007616	BUILDING REMOVAL NO. 16	L SUM	1	1	
Z0007617	BUILDING REMOVAL NO. 17	L SUM	1	1	
Z0007618	BUILDING REMOVAL NO. 18	L SUM	1	1	
Z0007619	BUILDING REMOVAL NO. 19	L SUM	1	1	

DRAWN BY: DB
 CHECKED BY:

M:\PROJECTS\PROJ\3526\ROADWAY\COMMON\As-built\SUM01-3526.dgn

⊙ Y080

* SPECIALTY ITEMS

△ Rev. 1-2-07

SUMMARY OF QUANTITIES

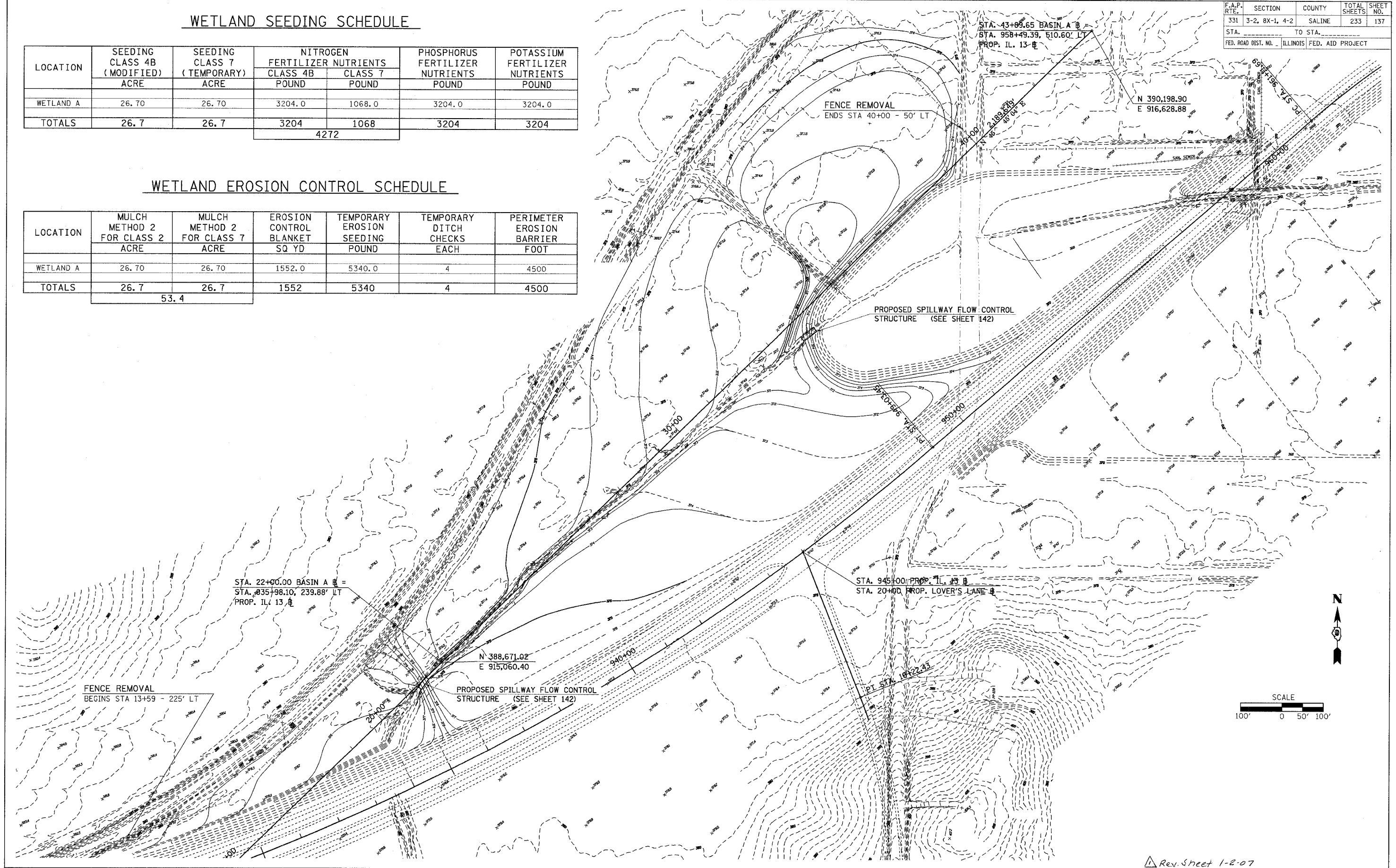
WETLAND SEEDING SCHEDULE

LOCATION	SEEDING CLASS 4B (MODIFIED) ACRE	SEEDING CLASS 7 (TEMPORARY) ACRE	NITROGEN FERTILIZER NUTRIENTS		PHOSPHORUS FERTILIZER NUTRIENTS POUND	POTASSIUM FERTILIZER NUTRIENTS POUND
			CLASS 4B POUND	CLASS 7 POUND		
WETLAND A	26.70	26.70	3204.0	1068.0	3204.0	3204.0
TOTALS	26.7	26.7	3204	1068	3204	3204
			4272			

WETLAND EROSION CONTROL SCHEDULE

LOCATION	MULCH METHOD 2 FOR CLASS 2 ACRE	MULCH METHOD 2 FOR CLASS 7 ACRE	EROSION CONTROL BLANKET SQ YD	TEMPORARY EROSION SEEDING POUND	TEMPORARY DITCH CHECKS EACH	PERIMETER EROSION BARRIER FOOT
TOTALS	26.7	26.7	1552	5340	4	4500
		53.4				

F.A.P. RTE.	SECTION	COUNTY	TOTAL SHEETS	SHEET NO.
331	3-2, 8X-1, 4-2	SALINE	233	137
STA. _____ TO STA. _____		ILLINOIS FED. AID PROJECT		



PLOT DATE = 12/27/2005
 PLOT SCALE = 1/8" = 100'
 USER NAME = thomsonf

Rev. Sheet 1-2-07