

FAP RTE.	SECTION	COUNTY	TOTAL SHEETS	SHEET NO.
331	3-2, 8X-1, 4-2	SALINE	233	1

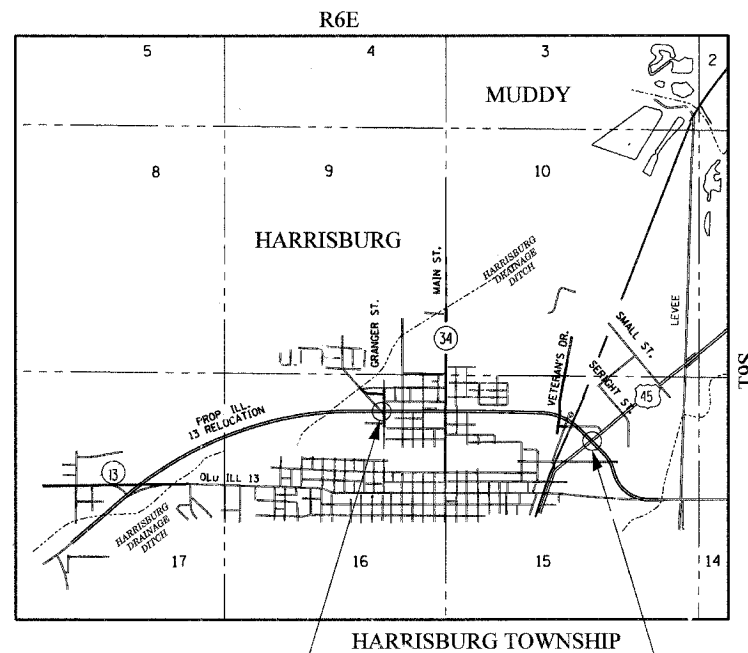
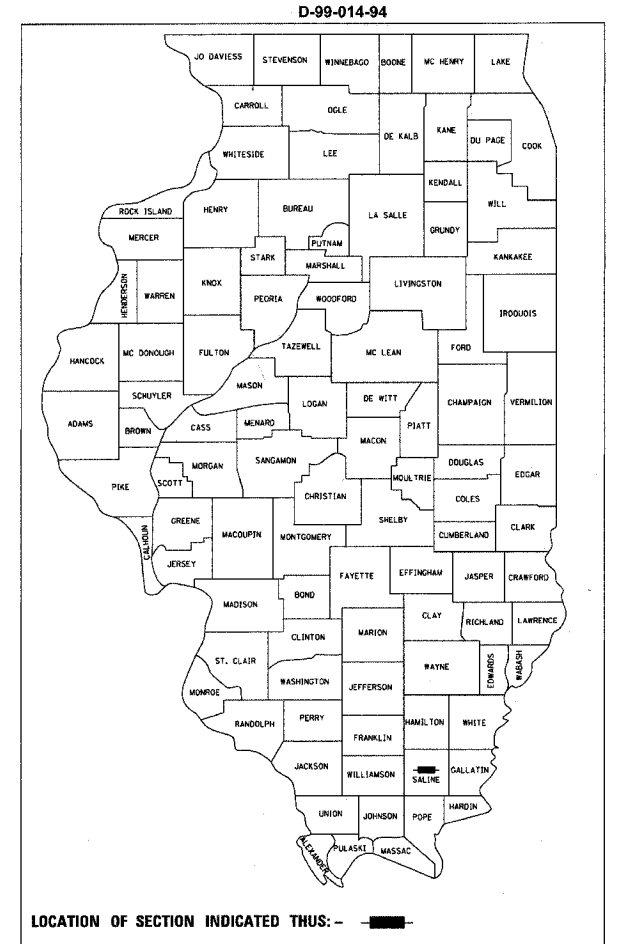
STATE OF ILLINOIS  
 DEPARTMENT OF TRANSPORTATION  
 DIVISION OF HIGHWAYS  
**PROPOSED  
 HIGHWAY PLANS**

FOR INDEX OF SHEETS, SEE SHEET NO. 2  
 FOR SUMMARY OF QUANTITIES, SEE SHEETS NO. 5-10

**DESIGN DESIGNATION**

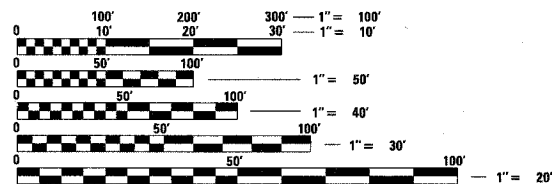
1510(25) ARTERIAL 4.27 (FD-20)  
 1510(25) ARTERIAL 6.03 (PCC-20)

FAP 331 (ILL ROUTE 13)  
 SECTION 3-2, 8X-1, 4-2  
 PROJECT: ACHPP-HPP-TI-4109(001)  
 SALINE COUNTY  
 C-99-008-02



BEGIN PROJECT  
 STA. 1024+73.38

END PROJECT  
 STA. 1071+82.00



FULL SIZE PLANS HAVE BEEN PREPARED USING STANDARD ENGINEERING SCALES. REDUCED SIZED PLANS WILL NOT CONFORM TO STANDARD SCALES. IN MAKING MEASUREMENTS ON REDUCED PLANS, THE ABOVE SCALES MAY BE USED.

J.U.L.I.E.  
 JOINT UTILITY LOCATION INFORMATION FOR EXCAVATION  
 1-800-892-0123

CONTRACT NO. 98627

NET LENGTH OF CENTERLINE 4708.62 FT.  
 GROSS LENGTH OF PROJECT 4708.62 FT., 0.892 MI.  
 NET LENGTH OF PROJECT 4708.62 FT., 0.892 MI.

**ab** alfred benesch & company  
 CONSULTING ENGINEERS  
 205 NORTH MICHIGAN AVENUE, CHICAGO, ILLINOIS 60601

STATE OF ILLINOIS  
 DEPARTMENT OF TRANSPORTATION  
 DIVISION OF HIGHWAYS

SUBMITTED Oct. 17 2006

Mary C. Lamin  
 DEPUTY DIRECTOR OF HIGHWAYS, REGION ENGINEER

December 8, 2006  
Eric E. Harris  
 INTERIM ENGINEER OF DESIGN AND ENVIRONMENT

December 8, 2006  
Milton R. Seng, P.E.  
 DIRECTOR, DIVISION OF HIGHWAYS

**PRINTED BY THE AUTHORITY  
 OF THE STATE OF ILLINOIS**

PROJECT ENGINEER: CHARLES STEIN (618) 549-2171