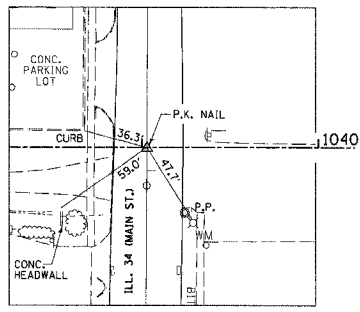
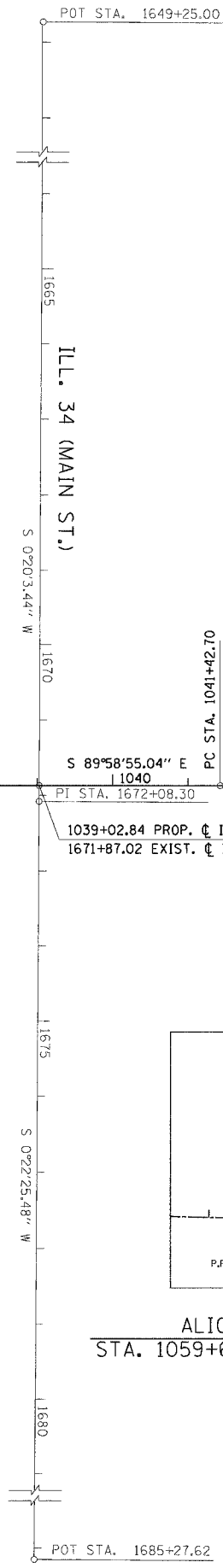
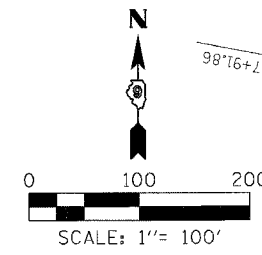
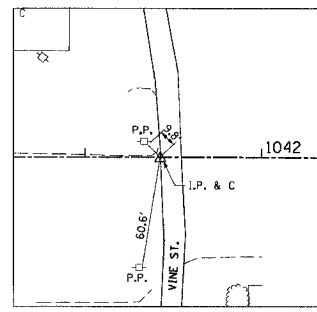


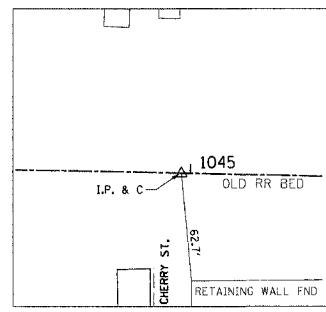
FAP RTE.	SECTION	COUNTY	TOTAL SHEETS	SHEET NO.
331	3-2, 8X-1, 4-2	SALINE	233	30
STA.		TO STA.		
FED. ROAD DIST. NO.		ILLINOIS FED. AID PROJECT		



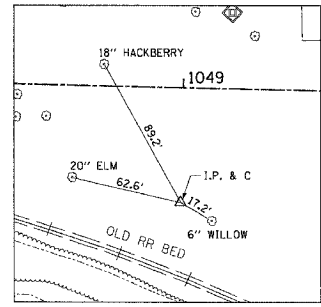
ALIGNMENT TIE POINT
 1039+02.84 PROP. C ILL. 13 RELOCATION
 1671+87.02 EXIST. C ILL. 34 (MAIN ST.)



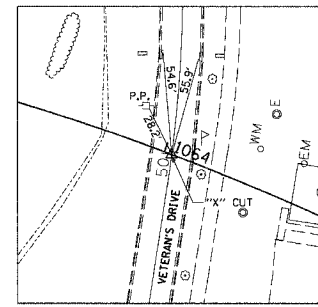
ALIGNMENT TIE POINT
 STA. 1041+42.70 ILL. 13 RELOCATION



ALIGNMENT TIE POINT
 STA. 1043+94.95 ILL. 13 RELOCATION



ALIGNMENT TIE POINT
 STA. 1049+00.00, 65.00' RT. ILL. 13 RELOCATION



ALIGNMENT TIE POINT
 1064+04.47 PROP. C ILL. 13 RELOCATION
 50+00.00 EXIST. C VETERAN'S DRIVE

MATCH LINE STA. 1038+00

1039+02.84 PROP. C ILL. 13 RELOCATION
 1671+87.02 EXIST. C ILL. 34 (MAIN ST.)

CURVE 21

PC STA. 1041+42.70
 PT STA. 1043+94.95

ILL. 13 RELOCATION

PC STA. 1059+60.01

PT STA. 53+71.02

PRC STA. 51+78.45

PC STA. 49+82.90

POT STA. 46+18.90

1064+04.47 PROP. C ILL. 13 RELOCATION
 50+00.00 EXIST. C VETERAN'S DRIVE

CURVE 147

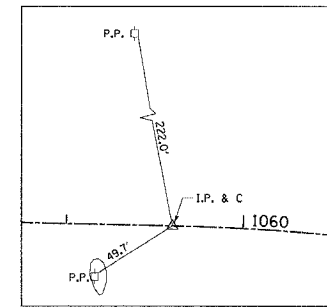
CURVE 146

CURVE 22

MATCH LINE STA. 1069+00

CURVE	P.I. STATION	Δ	D	T	L	R	M	CHORD
21	1042+68.83	1° 15' 40"	0° 30' 00"	126.13'	252.25'	11,459.16'	0.69'	252.24'
22	1064+91.65	44° 06' 23"	4° 21' 57"	531.63'	1,010.23'	1,312.33'	96.02'	985.47'

STATION	NORTHING	EASTING	REMARKS
1042+68.83	392,085.31	924,778.91	P.I. CURVE 21 ILL. 13 RELOCATION
1041+42.70	392,085.35	924,652.78	P.C. CURVE 21 ILL. 13 RELOCATION
1043+94.95	392,082.50	924,905.00	P.T. CURVE 21 ILL. 13 RELOCATION
1064+91.65	392,035.69	927,001.18	P.I. CURVE 22 ILL. 13 RELOCATION
1059+60.01	392,047.56	926,469.68	P.C. CURVE 22 ILL. 13 RELOCATION
1069+70.25	391,657.24	927,374.56	P.T. CURVE 22 ILL. 13 RELOCATION
1649+25.00	394,347.41	924,426.11	P.O.T. ILL. 34 (MAIN ST.)
1672+08.30	392,064.14	924,412.79	P.I. ILL. 34 (MAIN ST.)
1685+27.62	390,744.85	924,404.18	P.O.T. ILL. 34 (MAIN ST.)
1039+02.84	392,085.43	924,412.91	
1049+00.00	392,006.24	925,408.48	
1064+04.47	391,963.29	926,903.92	
1667+00.00	392,572.44	924,415.75	
1677+00.00	391,572.46	924,409.58	



ALIGNMENT TIE POINT
 STA. 1059+60.01 ILL. 13 RELOCATION

**U. S. ROUTE 45
 ALIGNMENT & TIES
 STA. 1038+00.00 TO STA. 1069+00.00
 ILL. 13 RELOCATION
 INCL. MAIN ST. AND
 VETERAN'S DRIVE**

DRAWN BY
 CHECKED BY

M:\PROJECTS\PROJ3526\ROADWAY\COMMON\Reference Files