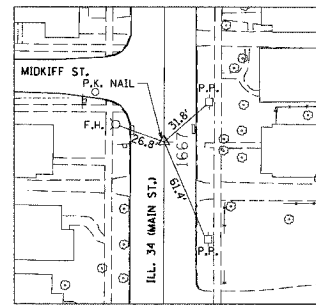


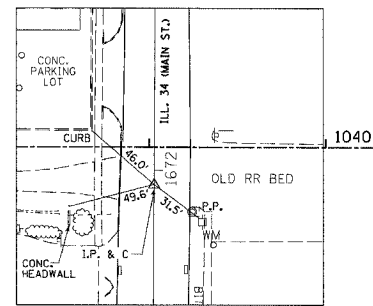
FAP RTE.	SECTION	COUNTY	TOTAL SHEETS	SHEET NO.
331	3-2, 8X-1, 4-2	SALINE	233	31
STA. TO STA.				
FED. ROAD DIST. NO.			ILLINOIS FED. AID PROJECT	

CURVE DATA								
CURVE	P.I. STATION	Δ	D	T	L	R	M	CHORD
146	50+81.28	15° 30' 47"	7° 56' 00"	98.37'	195.54'	722.22'	6.61'	194.95'
147	52+75.47	17° 12' 35"	8° 56' 12"	97.02'	192.58'	641.13'	7.22'	191.85'

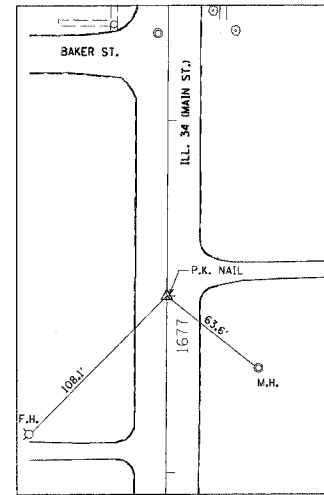
COORDINATE DATA			
STATION	NORTHING	EASTING	REMARKS
46+18.90	391,586.70	926,845.45	P.O.T. VETERAN'S DRIVE
50+81.28	392,043.57	926,916.63	P.I. CURVE 146 VETERAN'S DRIVE
49+82.90	391,946.37	926,901.49	P.C. CURVE 146 VETERAN'S DRIVE
51+78.45	392,141.28	926,905.23	P.T. CURVE 146 VETERAN'S DRIVE
52+75.47	392,237.64	926,893.98	P.I. CURVE 147 VETERAN'S DRIVE
51+78.45	392,141.28	926,905.23	P.C. CURVE 147 VETERAN'S DRIVE
53+71.02	392,333.02	926,911.75	P.T. CURVE 147 VETERAN'S DRIVE
67+91.86	393,729.80	927,172.09	P.O.T. VETERAN'S DRIVE
56+00.00	392,558.11	926,953.71	



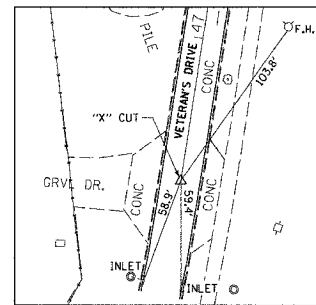
ALIGNMENT TIE POINT
STA. 1667+00.00 \bar{C} IL. 34 (MAIN ST.)



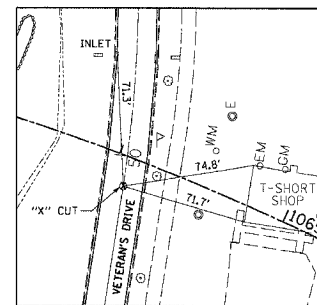
ALIGNMENT TIE POINT
STA. 1672+08.30 \bar{C} IL 34 (MAIN ST.)



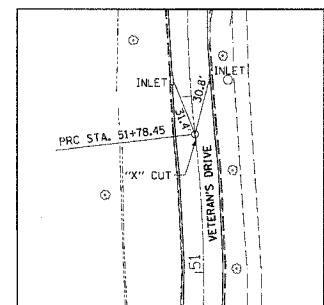
ALIGNMENT TIE POINT
STA. 1677+00.00 \bar{C} IL. 34 (MAIN ST.)



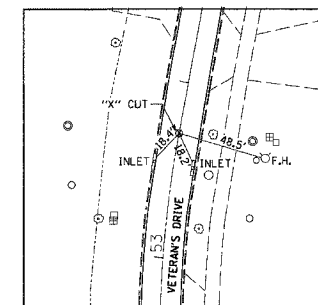
ALIGNMENT TIE POINT
STA. 46+18.90 \bar{C} VETERAN'S DRIVE



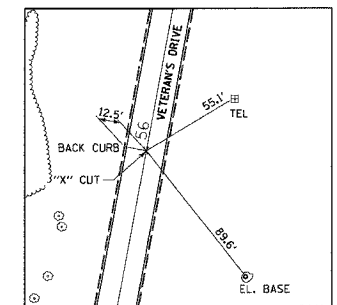
ALIGNMENT TIE POINT
STA. 49+82.90 \bar{C} VETERAN'S DRIVE



ALIGNMENT TIE POINT
STA. 51+78.45 \bar{C} VETERAN'S DRIVE



ALIGNMENT TIE POINT
STA. 53+71.02 \bar{C} VETERAN'S DRIVE



ALIGNMENT TIE POINT
STA. 56+00.00 \bar{C} VETERAN'S DRIVE

DRAWN BY
CHECKED BY

PROJECT NO.	13022
FILE NO.	13022
DATE	10/9/2006

**U. S. ROUTE 45
ALIGNMENT & TIES
STA. 1038 + 00.00 TO STA. 1069 + 00.00
ILL. 13 RELOCATION
INCL. MAIN ST. AND
VETERAN'S DRIVE**