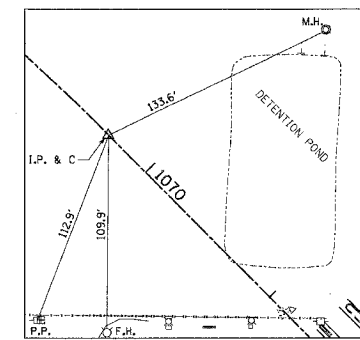
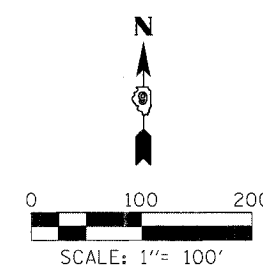
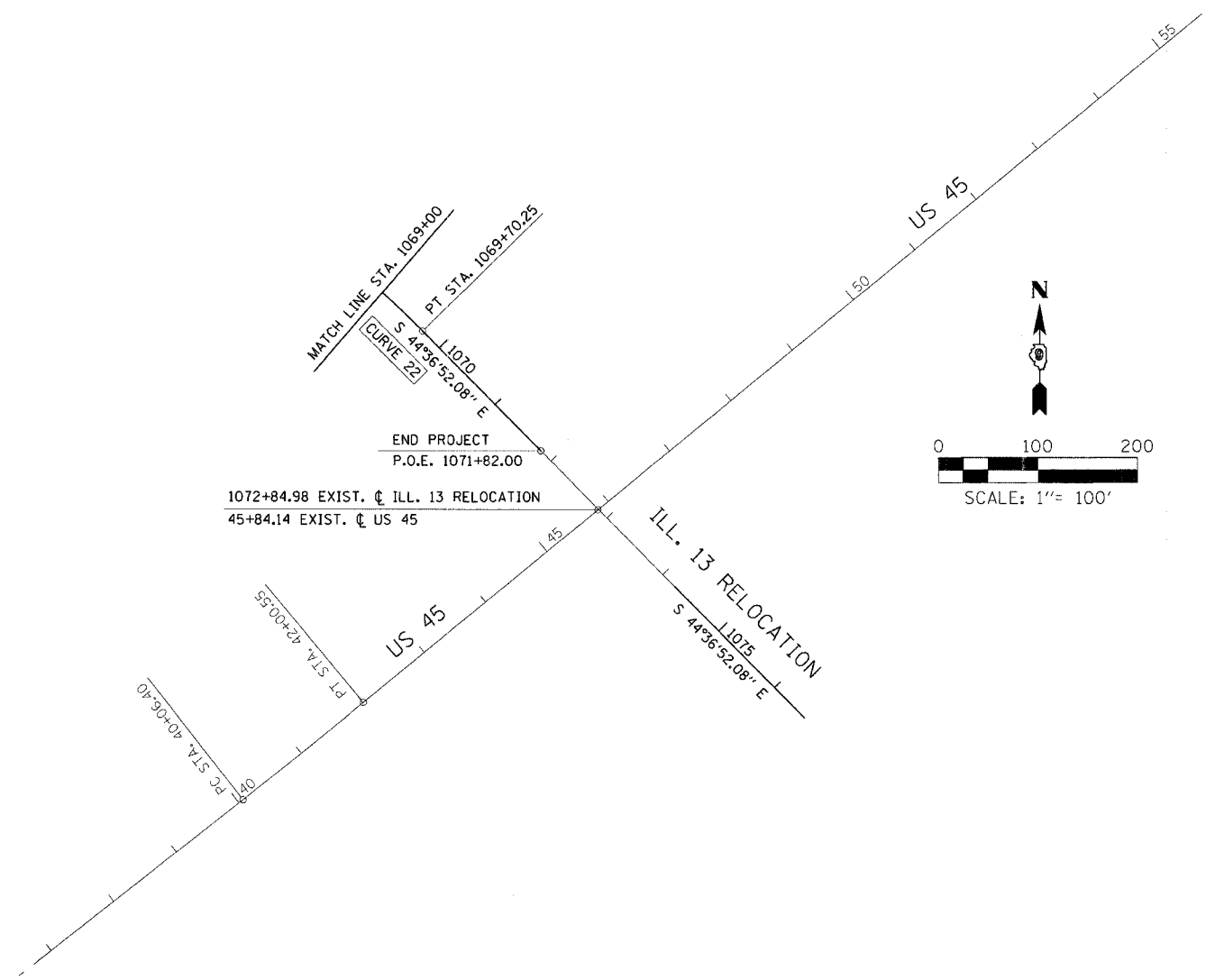


FAP R.T.E.	SECTION	COUNTY	TOTAL SHEETS	SHEET NO.
331	3-2, 8X-1, 4-2	SALINE	233	32
STA.		TO STA.		
FED. ROAD DIST. NO.		ILLINOIS FED. AID PROJECT		



ALIGNMENT TIE POINT  
STA. 1069+70.25  $\perp$  ILL. 13 RELOCATION

CURVE DATA								
CURVE	P.I. STATION	$\Delta$	D	T	L	R	M	CHORD
22	1064+91.65	44° 06' 23"	4° 21' 57"	531.63'	1,010.23'	1,312.33'	96.02'	985.47'

COORDINATE DATA			
STATION	NORTHING	EASTING	REMARKS
1064+91.65	392,035.69	927,001.18	P.I. CURVE 22 ILL. 13 RELOCATION
1059+60.01	392,047.56	926,469.68	P.C. CURVE 22 ILL. 13 RELOCATION
1069+70.25	391,657.24	927,374.56	P.T. CURVE 22 ILL. 13 RELOCATION

**U. S. ROUTE 45  
ALIGNMENT & TIES  
STA. 1069+00.00 TO STA. 1071+82.00  
ILL. 13 RELOCATION**

DRAWN BY  
CHECKED BY

M:\PROJECTS\PROJECTS\ROADWAY\COMMON\
REFERENCE FILES
FILE
ACT