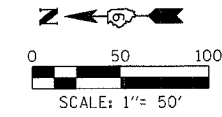


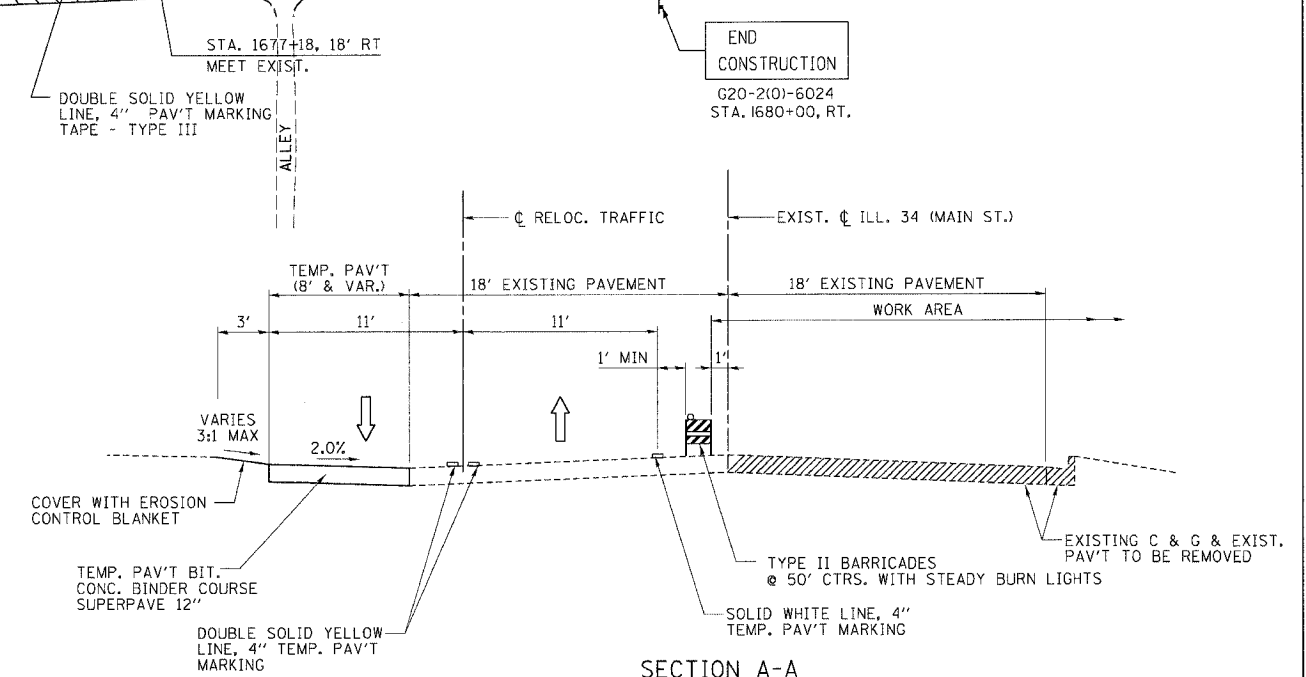
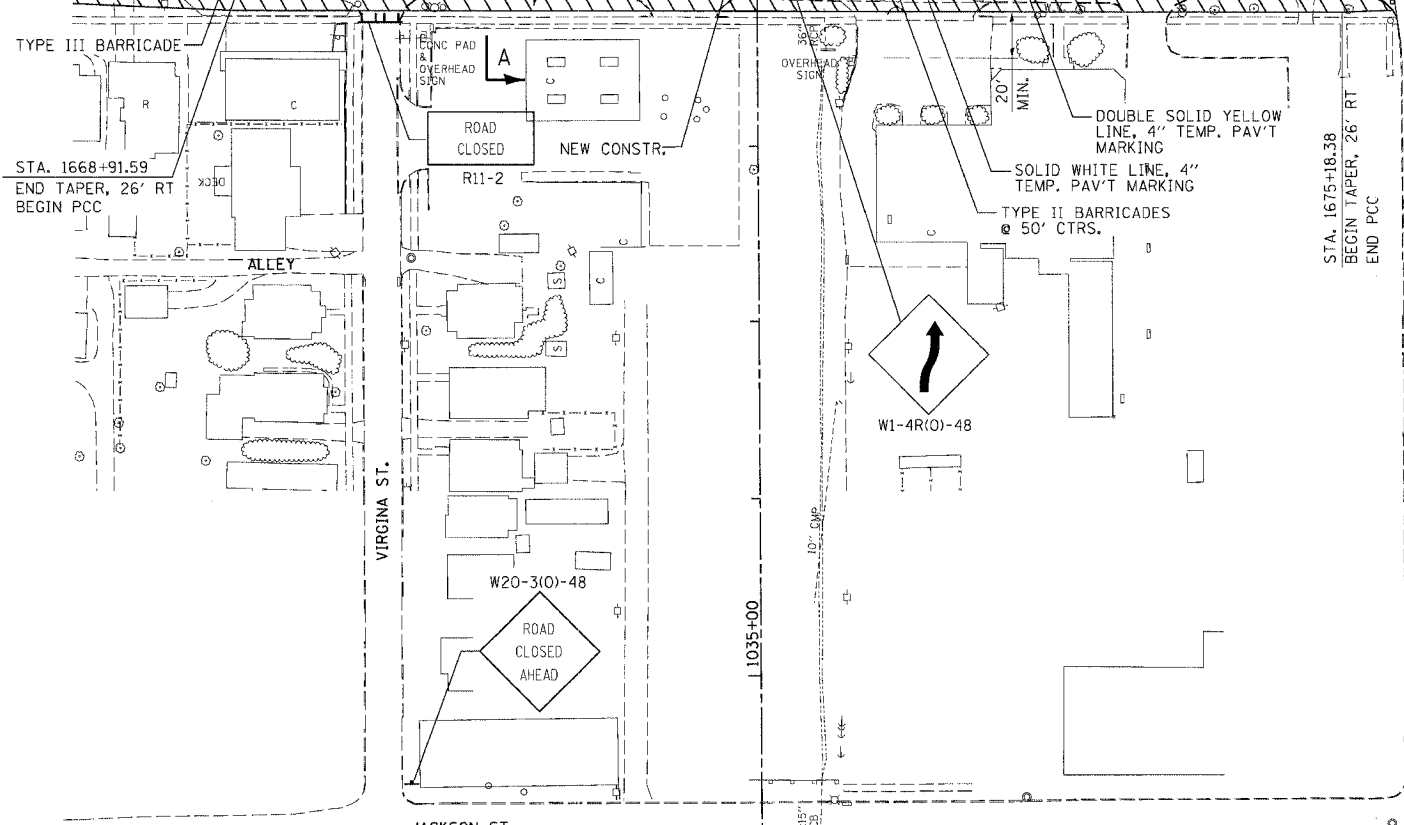
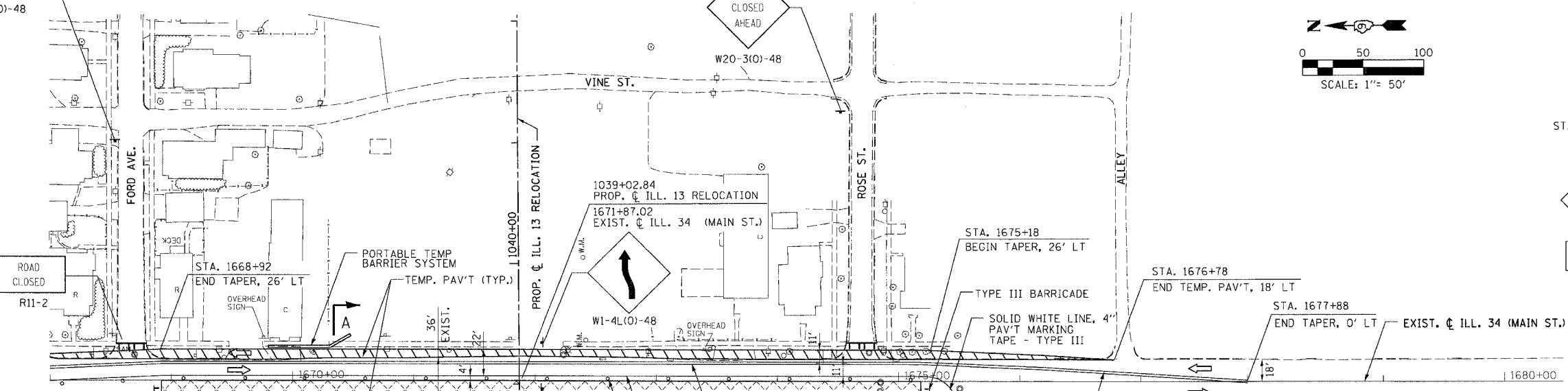
FAP RTE.	SECTION	COUNTY	TOTAL SHEETS	SHEET NO.
331	3-2, BX-1, 4-2	SALINE	233	39
STA.		TO STA.		
FED. ROAD DIST. NO.		ILLINOIS FED. AID PROJECT		



STA. 1682+50, LT.
W1-4R(O)-48
W13-1(O)-2424



STA. 1692+50, LT.
W20-1(O)-48



NOTE:
ALL EXISTING PAVEMENT MARKINGS
THAT CONFLICT WITH NEW TRAFFIC
PATTERN SHALL BE REMOVED.

SECTION A-A
N.T.S.

LEGEND:

- PERMANENT CONSTRUCTION
- TEMPORARY PAVEMENT
- BARRICADE, TYPE III
- BARRICADE, TYPE II

DRAWN BY
CHECKED BY

PROJECT	PROJECT NO.	DATE
FILE	FILE NO.	FILE DATE
REVISIONS	NO.	DATE

not162-0105.dgn