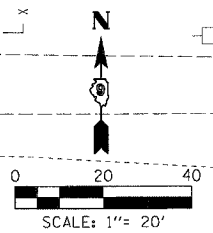
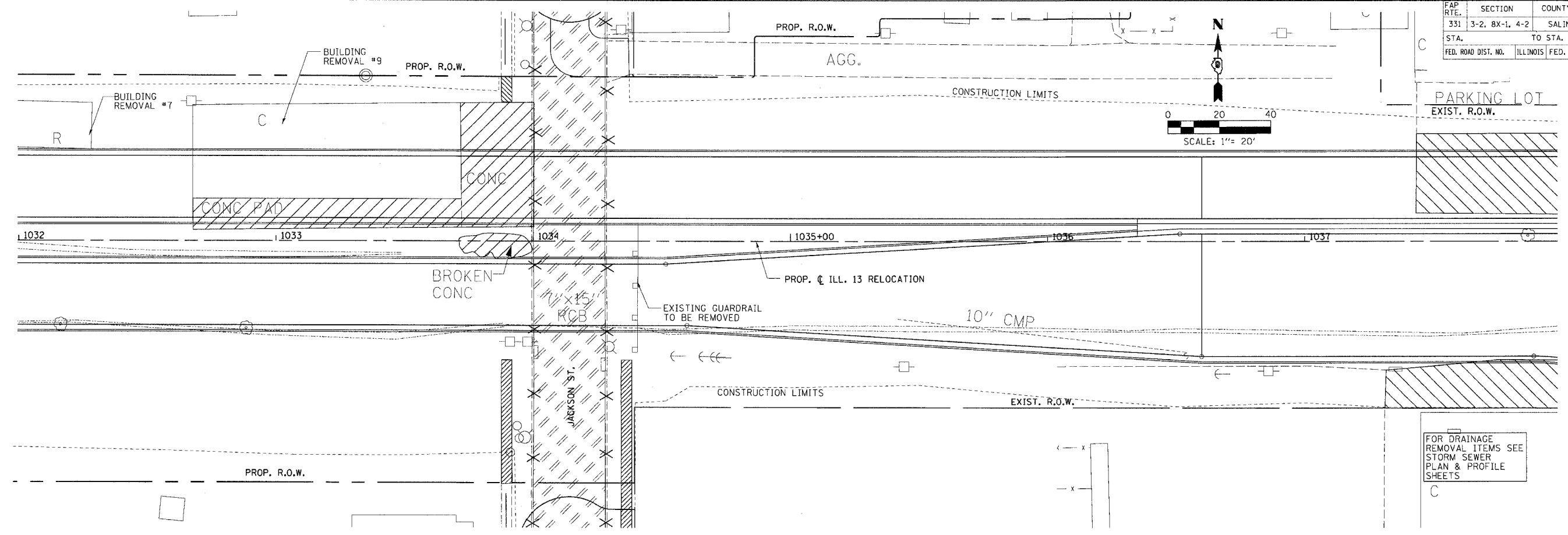
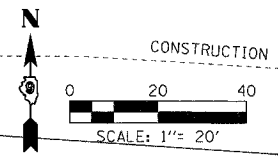
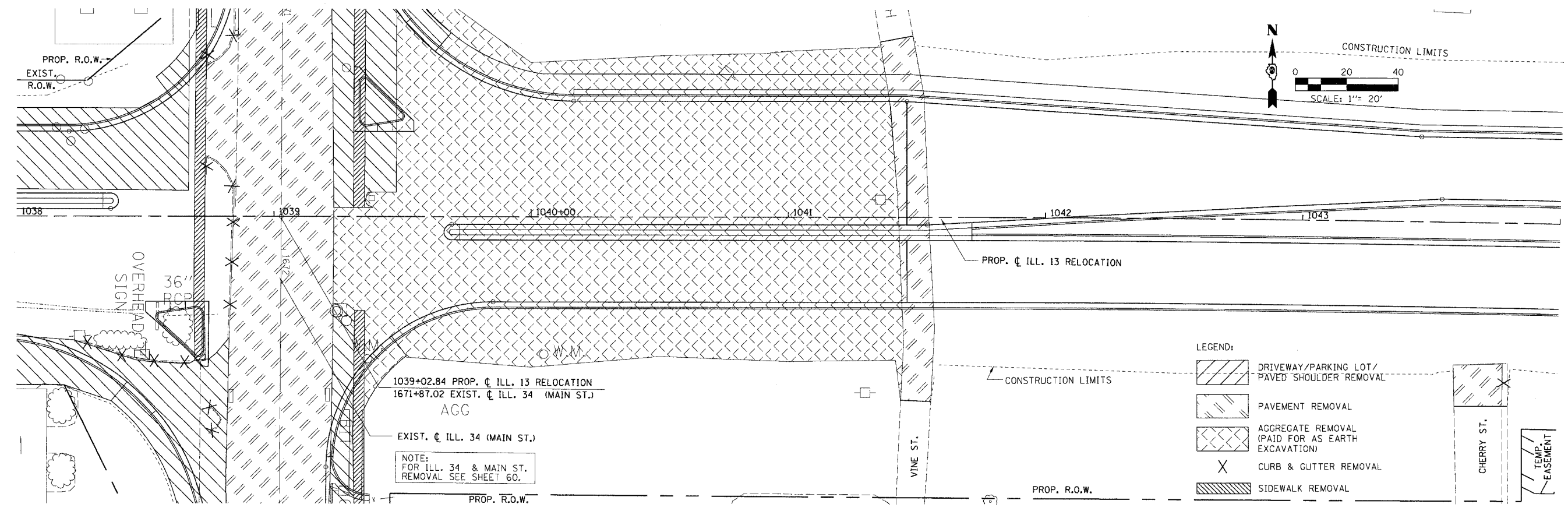


FAP R.T.E.	SECTION	COUNTY	TOTAL SHEETS	SHEET NO.
331	3-2, 8X-1, 4-2	SALINE	233	53
STA.	TO STA.			
FED. ROAD DIST. NO.	ILLINOIS FED. AID PROJECT			



PARKING LOT  
EXIST. R.O.W.

FOR DRAINAGE  
REMOVAL ITEMS SEE  
STORM SEWER  
PLAN & PROFILE  
SHEETS



LEGEND:

- DRIVEWAY/PARKING LOT/  
PAVED SHOULDER REMOVAL
- PAVEMENT REMOVAL
- AGGREGATE REMOVAL  
(PAID FOR AS EARTH  
EXCAVATION)
- CURB & GUTTER REMOVAL
- SIDEWALK REMOVAL

1039+02.84 PROP. C ILL. 13 RELOCATION  
1671+87.02 EXIST. C ILL. 34 (MAIN ST.)  
AGG

EXIST. C ILL. 34 (MAIN ST.)

NOTE:  
FOR ILL. 34 & MAIN ST.  
REMOVAL SEE SHEET 60.

PROP. R.O.W.

CHERRY ST.

TEMP. EASEMENT

DRAWN BY: JS  
CHECKED BY: JS

PROJECTS/PROJ. DESK/ROADWAY/CONTRACT 1/5 TRIPINIZ
ACT. FILE
REF. PROJ. FILE

**REMOVAL PLAN - STA. 1032 + 00.00 TO STA. 1044 + 00.00**