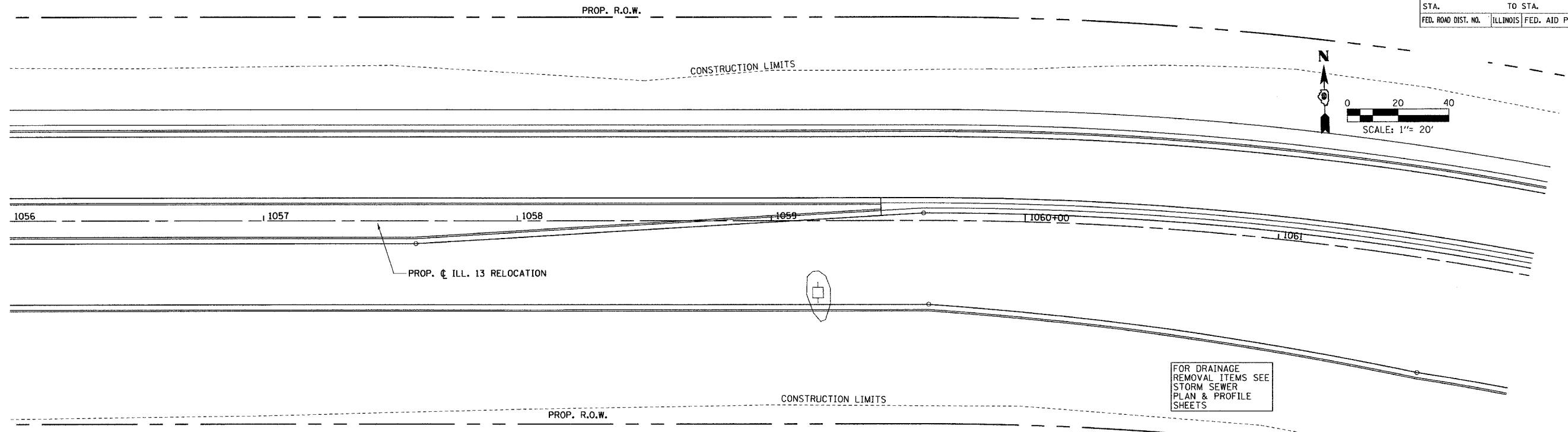


FAP RTE.	SECTION	COUNTY	TOTAL SHEETS	SHEET NO.
331	3-2, 8X-1, 4-2	SALINE	233	55
STA.		TO STA.		
FED. ROAD DIST. NO.	ILLINOIS	FED. AID PROJECT		



FOR DRAINAGE  
REMOVAL ITEMS SEE  
STORM SEWER  
PLAN & PROFILE  
SHEETS

DRAWN BY IS  
CHECKED BY JS

NOTE:  
FOR VETERAN'S DRIVE  
REMOVAL SEE SHEET 61.

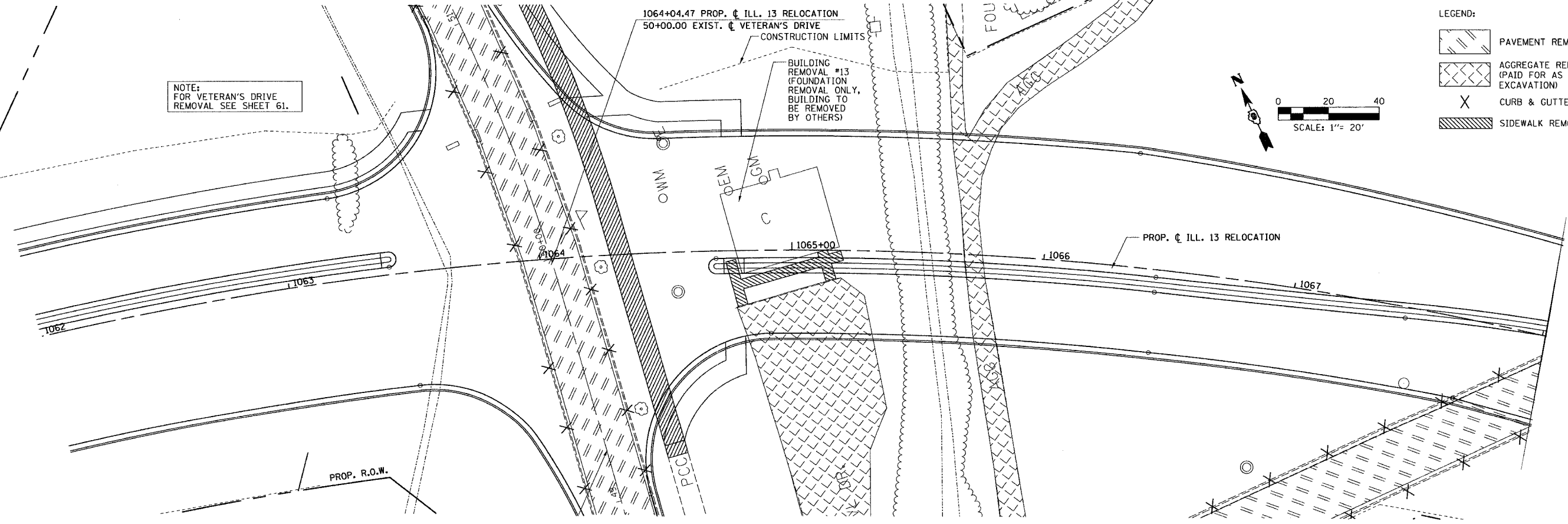
1064+04.47 PROP. C ILL. 13 RELOCATION  
50+00.00 EXIST. C VETERAN'S DRIVE  
CONSTRUCTION LIMITS

BUILDING  
REMOVAL #13  
(FOUNDATION  
REMOVAL ONLY,  
BUILDING TO  
BE REMOVED  
BY OTHERS)

LEGEND:

- PAVEMENT REMOVAL
- AGGREGATE REMOVAL (PAID FOR AS EARTH EXCAVATION)
- CURB & GUTTER REMOVAL
- SIDEWALK REMOVAL

0 20 40  
SCALE: 1" = 20'



REMOVAL PLAN - STA. 1056 + 00.00 TO STA. 1068 + 00.00