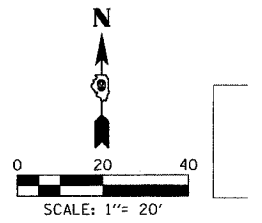
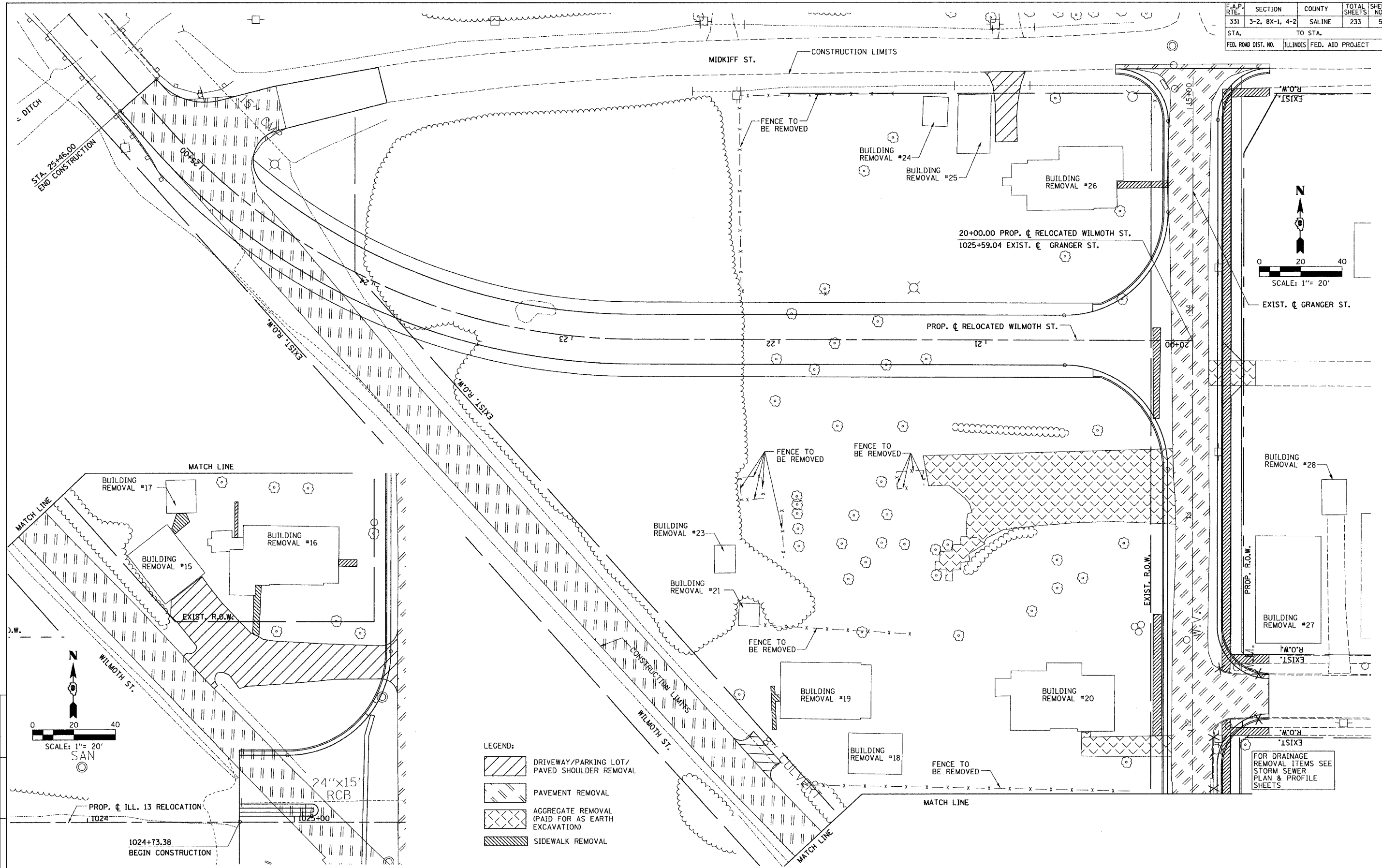


F.A.P. NO.	SECTION	COUNTY	TOTAL SHEETS	SHEET NO.
331	3-2, 8X-1, 4-2	SALINE	233	58
STA.		TO STA.		
FED. ROAD DIST. NO.		ILLINOIS FED. AID PROJECT		



FOR DRAINAGE REMOVAL ITEMS SEE STORM SEWER PLAN & PROFILE SHEETS

**REMOVAL PLAN - RELOCATED WILMOTH ST. - STA. 20+00.00 TO STA. 25+46.00**

DRAWN BY: IS  
CHECKED BY: JS

MAP/PROJECTS/PROJ3556/ROADWAY/CONTRACT 12/STRIPING/  
ACTIVE FILES  
11/2/2006 1:22:44 PM