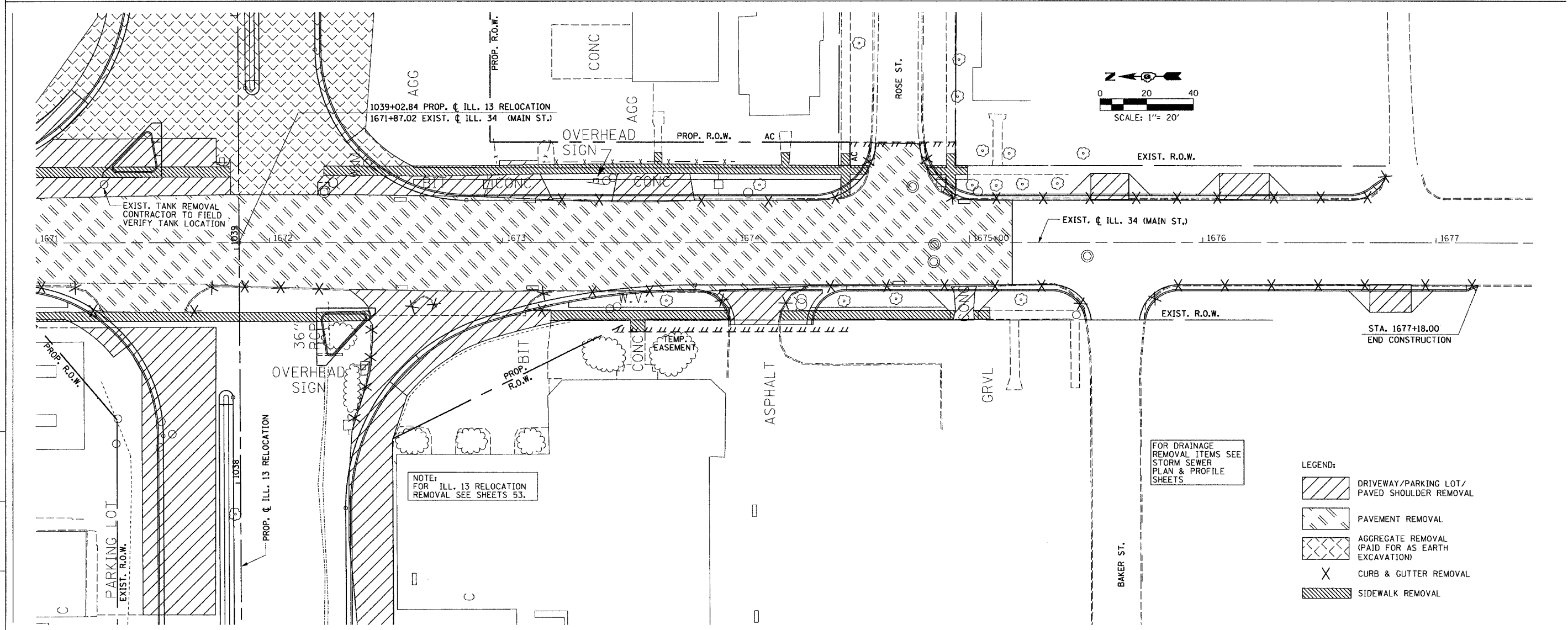
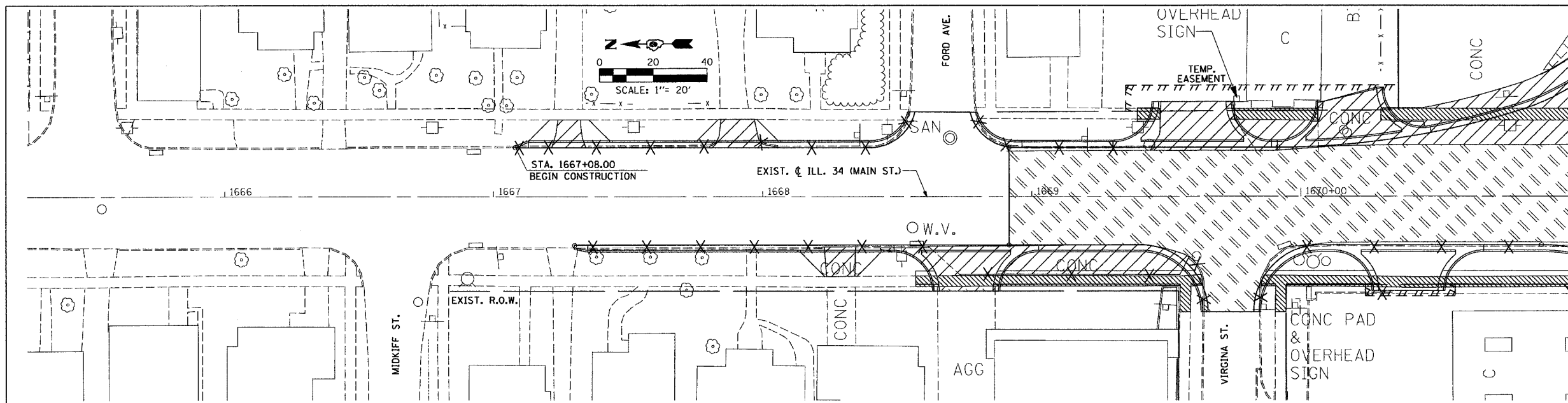


FAP RTE.	SECTION	COUNTY	TOTAL SHEETS	SHEET NO.
331	3-2, 8X-1, 4-2	SALINE	233	60
STA.		TO STA.		
FED. ROAD DIST. NO.		ILLINOIS FED. AID PROJECT		



NOTE:  
FOR ILL. 13 RELOCATION  
REMOVAL SEE SHEETS 53.

FOR DRAINAGE  
REMOVAL ITEMS SEE  
STORM SEWER  
PLAN & PROFILE  
SHEETS

- LEGEND:
- DRIVEWAY/PARKING LOT/  
PAVED SHOULDER REMOVAL
  - PAVEMENT REMOVAL
  - AGGREGATE REMOVAL  
(PAID FOR AS EARTH  
EXCAVATION)
  - CURB & GUTTER REMOVAL
  - SIDEWALK REMOVAL

DRAWN BY JS  
CHECKED BY JS

M:\PROJECTS\PROJECTS\ROADWAY\CONTRACT 1\STRIPING\  
Active Files  
Reference Files

**REMOVAL PLAN - ILL. 34 (MAIN ST.) - STA. 1667+08.00 TO STA. 1677+18.00**