

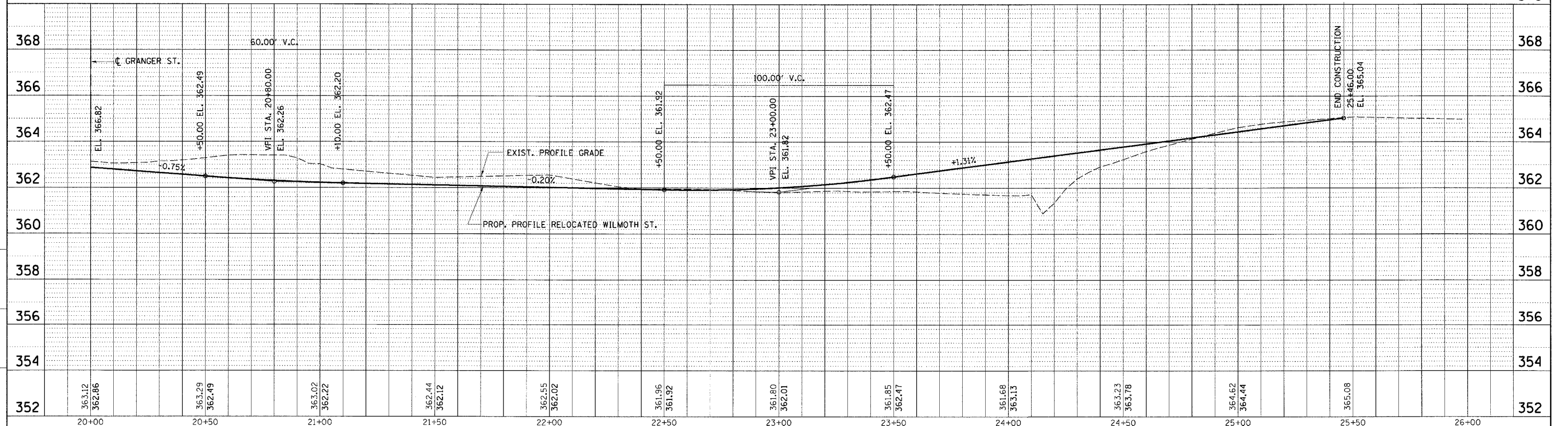
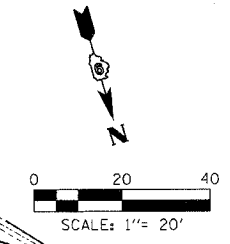
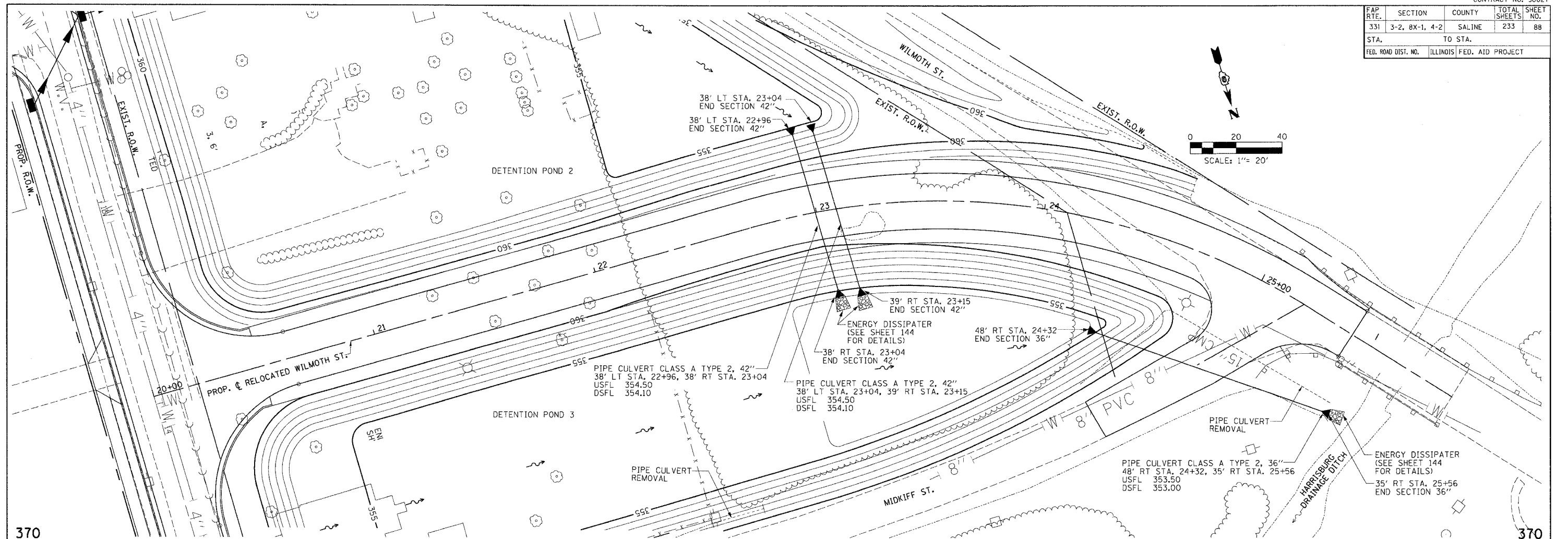
FAP RTE.	SECTION	COUNTY	TOTAL SHEETS	SHEET NO.
331	3-2, 8X-1, 4-2	SALINE	233	88
STA. TO STA.		ILLINOIS FED. AID PROJECT		

DATE	BY	DATE	BY
9/20/06	WJG	9/20/06	WJG
9/20/06	WJG	9/20/06	WJG
9/20/06	WJG	9/20/06	WJG
9/20/06	WJG	9/20/06	WJG

PLAN & PROFILE CHECKED BY  
DRAINAGE CHECKED BY  
DRAWN BY

DATE	BY	DATE	BY
9/20/06	WJG	9/20/06	WJG
9/20/06	WJG	9/20/06	WJG
9/20/06	WJG	9/20/06	WJG
9/20/06	WJG	9/20/06	WJG

PROJECT NO.	DATE	BY
11020-336-88	9/20/06	WJG
11020-336-88	9/20/06	WJG
11020-336-88	9/20/06	WJG
11020-336-88	9/20/06	WJG



STORM SEWER PLAN PROFILE - RELOCATED WILMOTH ST. - STA. 20+00.00 TO STA. 25+46.00