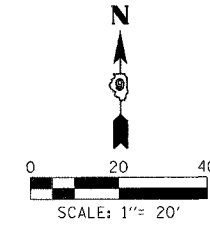


FAP R.T.E.	SECTION	COUNTY	TOTAL SHEETS	SHEET NO.
331	3-2, 8X-1, 4-2	SALINE	233	114
STA.	TO STA.			
FED. ROAD DIST. NO.	ILLINOIS	FED. AID PROJECT		

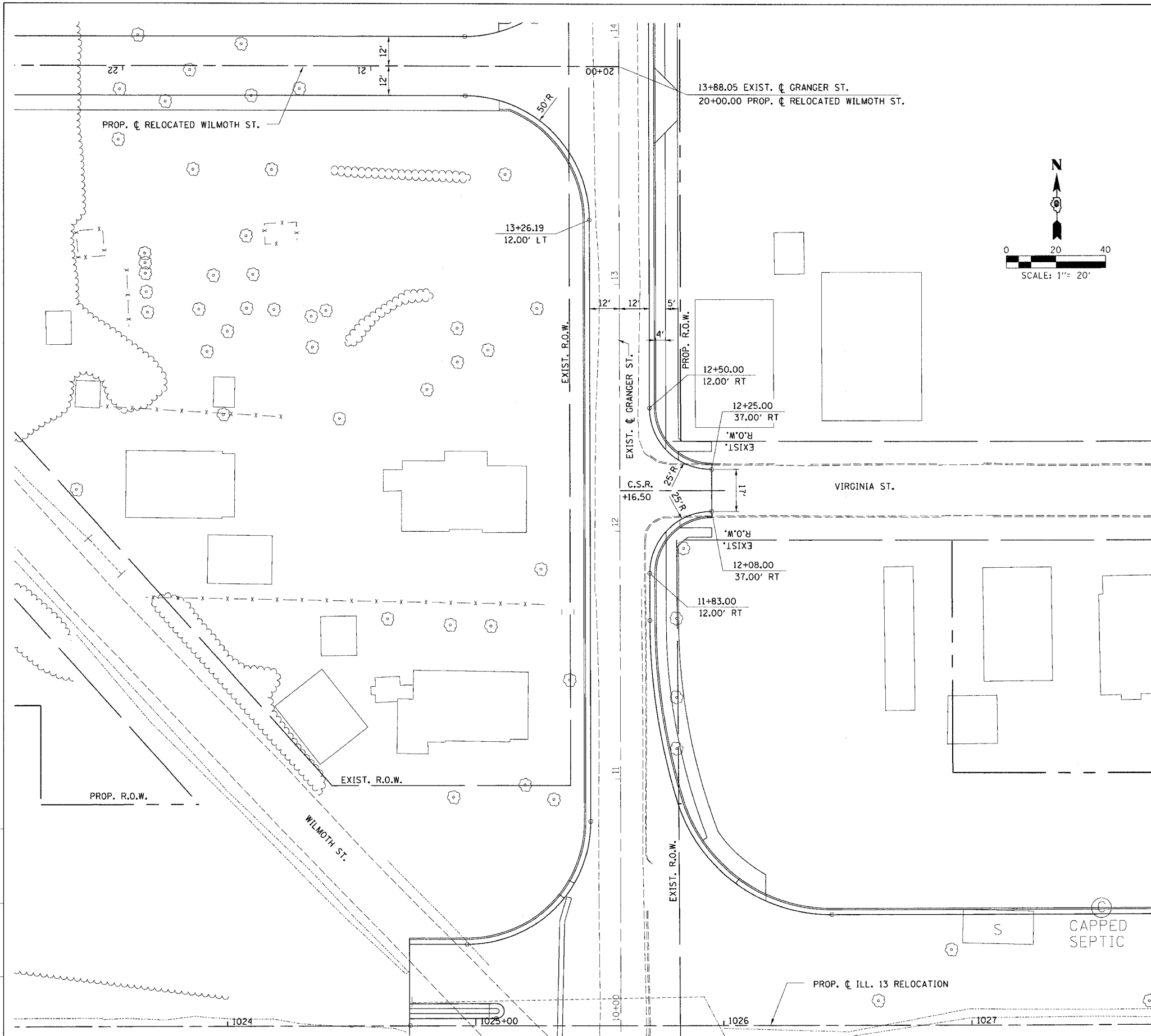
NE EXIST. GRANGER ST. / EXIST. VIRGINIA ST.

STATIONING ALONG EXIST. GRANGER ST.	OFFSET TO E.P.	EDGE OF PAV'T. ELEV.	STATIONING ALONG EXIST. VIRGINIA ST.	OFFSET TO E.P.	DISTANCE ALONG RADIUS	GEOMETRIC DESCRIPTION
	FEET	FEET		FEET		
12+50.00	12.00	362.61			0	PC
12+40.26	13.97	362.53			10.00	
12+32.07	19.58	362.41			10.00	
12+26.70	27.94	362.27			10.00	
12+25.00	37.00	362.13			9.00	PT



SE EXIST. GRANGER ST. / EXIST. VIRGINIA ST.

STATIONING ALONG EXIST. GRANGER ST.	OFFSET TO E.P.	EDGE OF PAV'T. ELEV.	STATIONING ALONG EXIST. VIRGINIA ST.	OFFSET TO E.P.	DISTANCE ALONG RADIUS	GEOMETRIC DESCRIPTION
	FEET	FEET		FEET		
11+83.00	12.00	362.68			0	PC
11+92.73	13.97	362.56			10.00	
12+00.93	19.58	362.43			10.00	
12+06.30	27.94	362.28			10.00	
12+08.00	37.00	362.14			9.00	PT



DRAWN BY  
CHECKED BY

PROJECT NO.	PROJ. 3526
ROADWAY	ROADWAY
DATE	10/9/2006
SCALE	1"= 20'
DESIGNED BY	
CHECKED BY	
IN CHARGE	