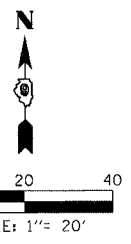


FAP R.T.E.	SECTION	COUNTY	TOTAL SHEETS	SHEET NO.
331	3-2, 8X-1, 4-2	SALINE	233	115
STA.		TO STA.		
FED. ROAD DIST. NO.		ILLINOIS FED. AID PROJECT		

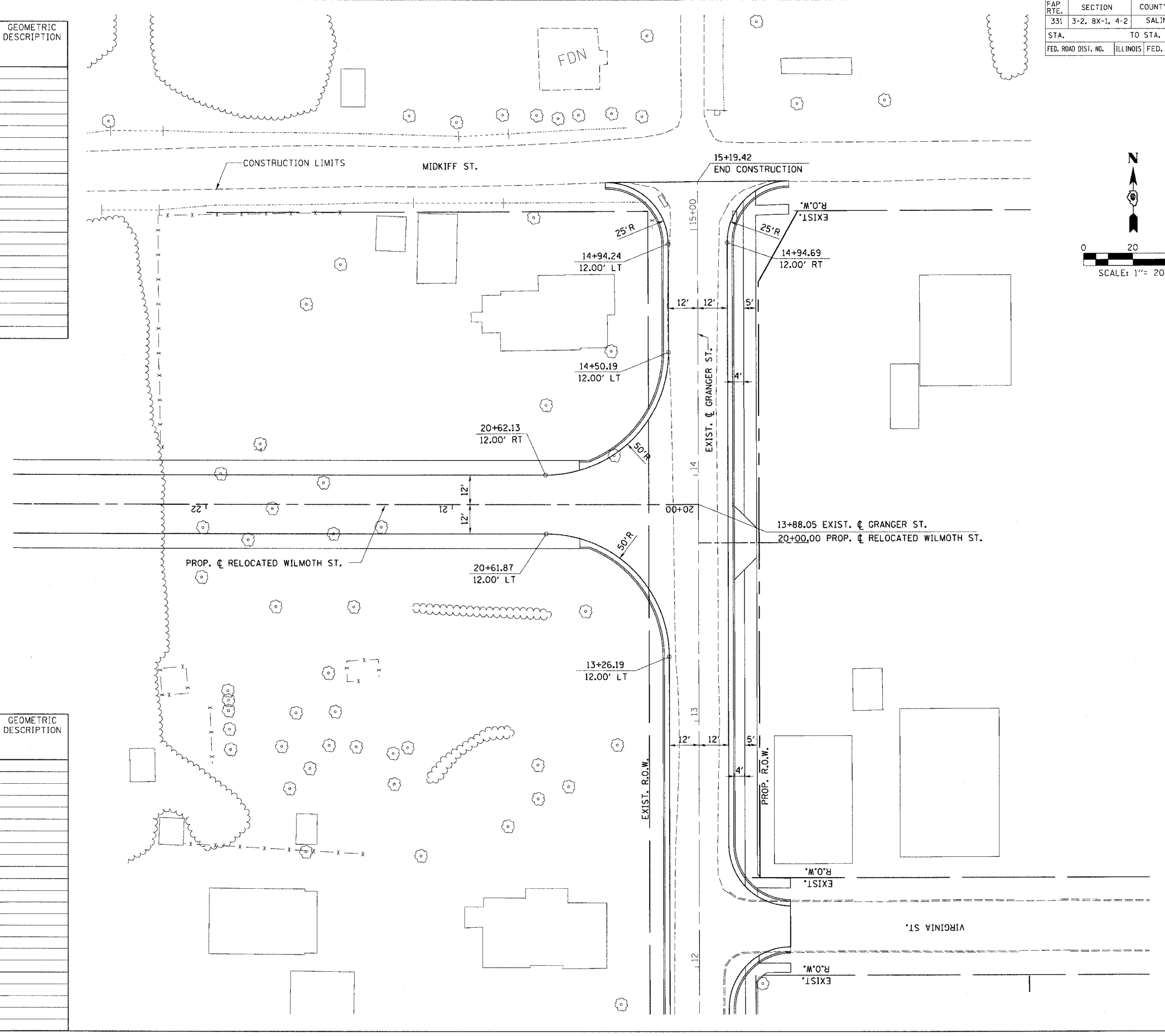


NW EXIST. GRANGER ST. / PROP. RELOCATED WILMOTH ST.

STATIONING ALONG EXIST. GRANGER ST.	OFFSET TO E.P.	EDGE OF PAV'T. ELEV.	STATIONING ALONG PROP. RELOCATED WILMOTH ST.	OFFSET TO E.P.	DISTANCE ALONG RADIUS	GEOMETRIC DESCRIPTION
	FEET	FEET		FEET	FEET	
14+50.19	12.00	362.37				
14+40.23	13.00	362.41			10.00	
14+30.68	15.95	362.43	20+20.81	33.85	10.00	
14+21.90	20.73	362.45	20+27.22	26.21	10.00	
		362.39	20+35.04	19.99	10.00	
		362.33	20+43.91	15.41	10.00	
		362.27	20+53.53	12.73	10.00	
		362.22	20+62.13	12.00	8.65	

SW EXIST. GRANGER ST. / PROP. RELOCATED WILMOTH ST.

STATIONING ALONG EXIST. GRANGER ST.	OFFSET TO E.P.	EDGE OF PAV'T. ELEV.	STATIONING ALONG PROP. RELOCATED WILMOTH ST.	OFFSET TO E.P.	DISTANCE ALONG RADIUS	GEOMETRIC DESCRIPTION
	FEET	FEET		FEET	FEET	
13+26.16	12.00	362.87				
13+36.10	12.98	362.85			10.00	
13+45.64	15.89	362.79			10.00	
13+54.37	20.71	362.69	20+20.64	33.68	10.00	
13+61.99	27.14	362.57	20+27.09	26.06	10.00	
		362.42	20+34.92	19.87	10.00	
		362.32	20+43.83	15.37	10.00	
		362.27	20+53.44	12.66	10.00	
		362.22	20+61.87	12.00	8.46	



DRAWN BY
CHECKED BY

M:\PROJECTS\PROJECTS\ROADWAY\COMMON\Reference Files