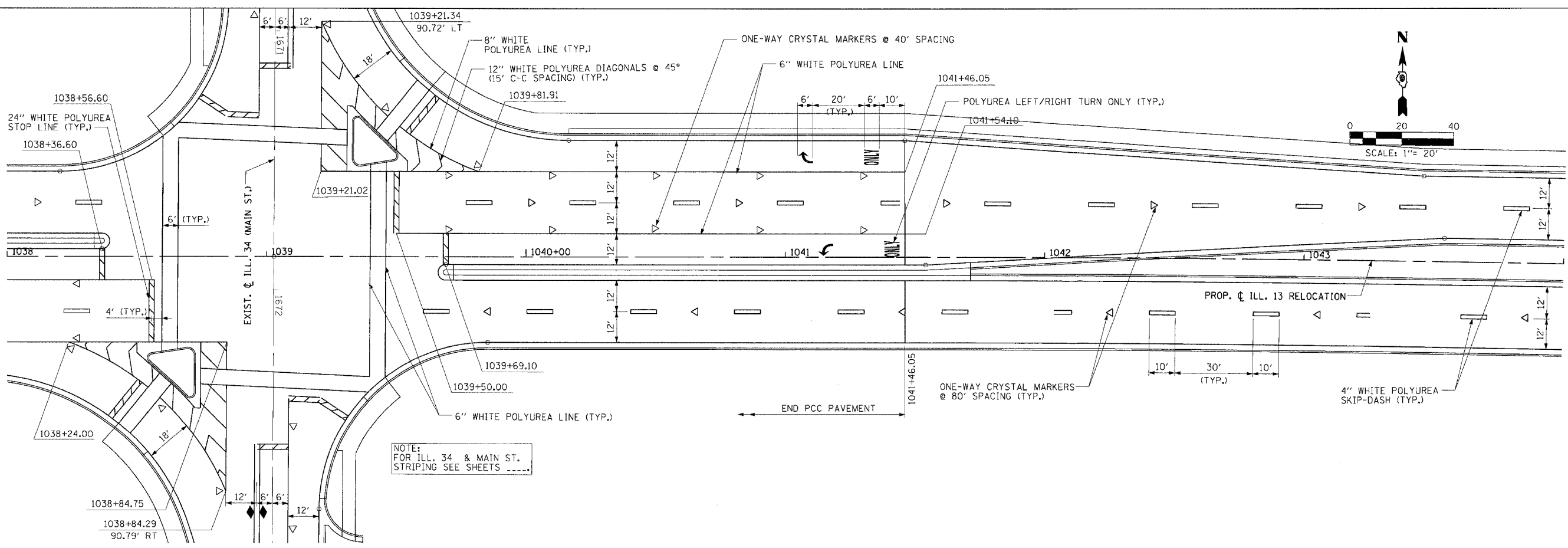
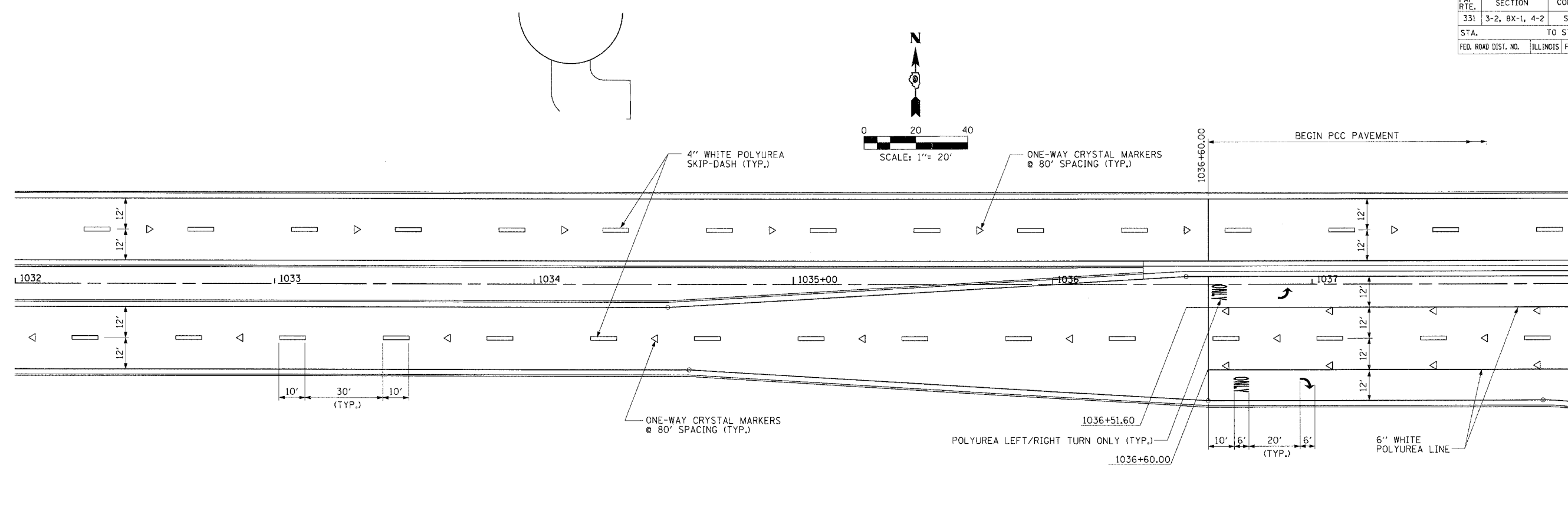


FAP RTE.	SECTION	COUNTY	TOTAL SHEETS NO.	SHEET NO.
331	3-2, 8X-1, 4-2	SALINE	233	121
STA.		TO STA.		
FED. ROAD DIST. NO.	ILLINOIS	FED. AID PROJECT		



NOTE:
FOR ILL. 34 & MAIN ST.
STRIPING SEE SHEETS -----

PAVEMENT MARKING - STA. 1032 + 00.00 TO STA. 1044 + 00.00

DRAWN BY IS
CHECKED BY JS

PROJECTS/PROJ33526/ROADWAY/CONTRACT 1/STRIPING/
Act File