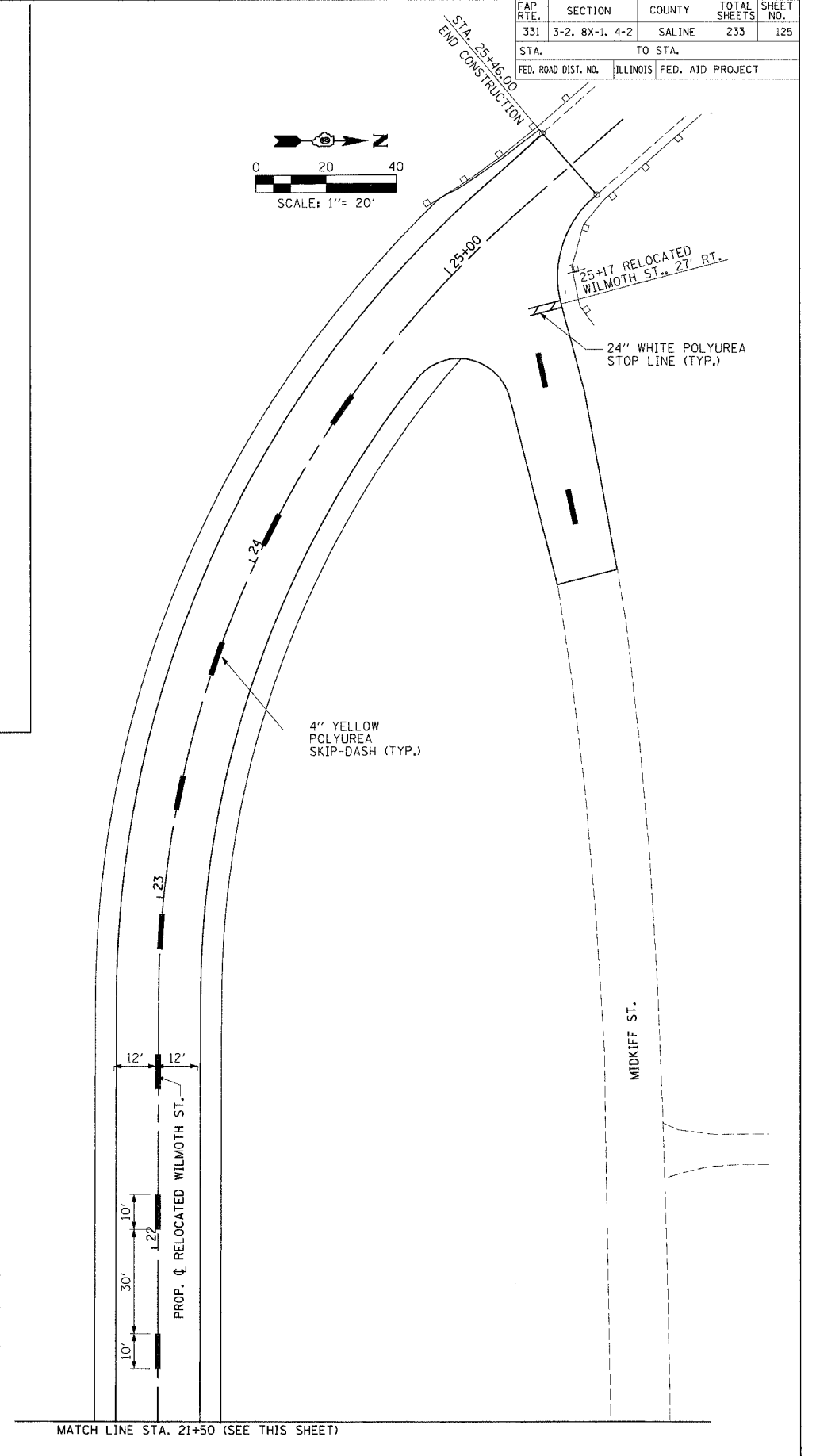
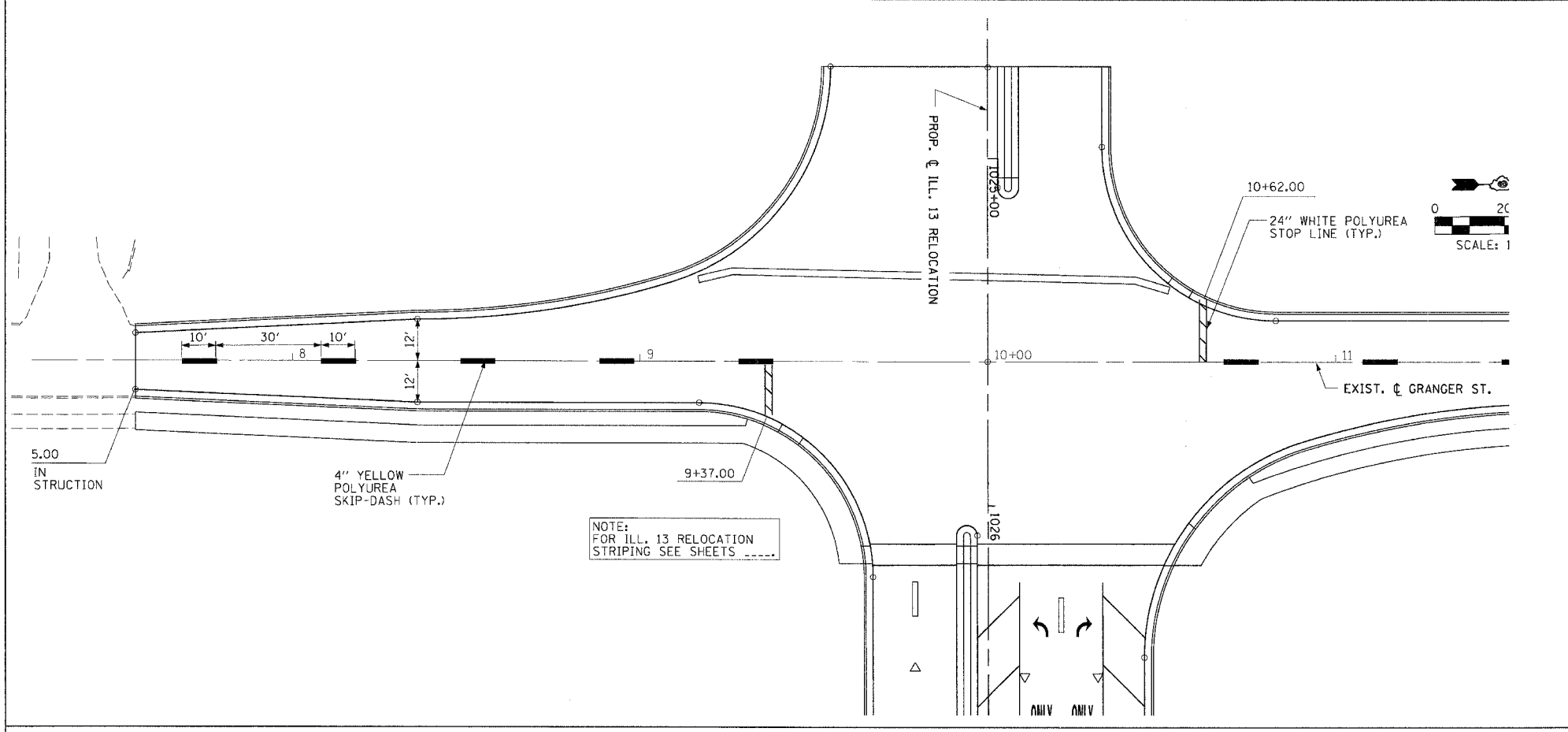


FAP R.T.E.	SECTION	COUNTY	TOTAL SHEETS	SHEET NO.
331	3-2, 8X-1, 4-2	SALINE	233	125
STA. TO STA.		TO STA.		
FED. ROAD DIST. NO.		ILLINOIS FED. AID PROJECT		



DRAWN BY: JS  
CHECKED BY: JS

PROJECTS/PROJ026/ROADWAY/CONTRACT 125 STRIPING/  
ACTS/FILB

PAVEMENT MARKING - GRANGER ST. - STA. 7+55.00 TO STA. 15+19.42