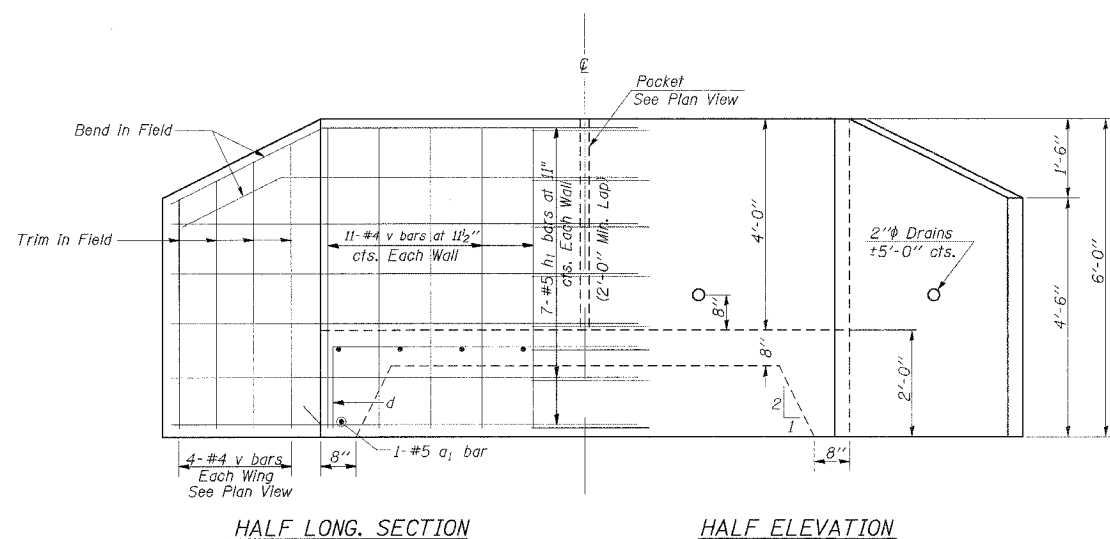


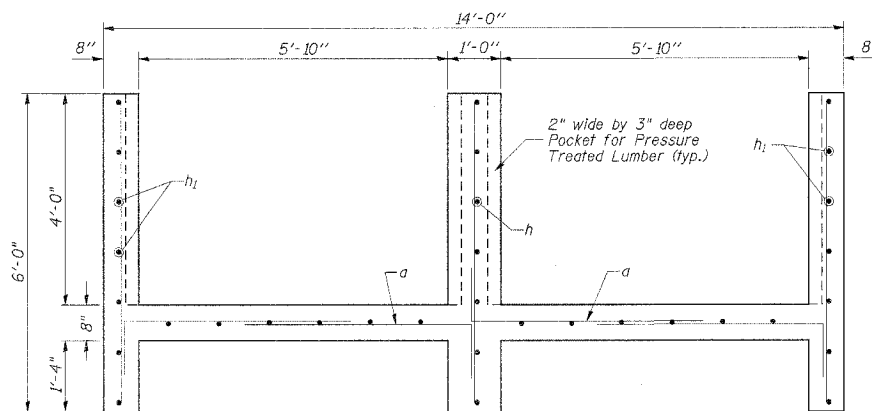
F.A.P. RTE.	SECTION	COUNTY	TOTAL SHEETS	SHEET NO.
331	3-2, 8X-1, 4-2	SALINE	233	142
STA. _____		TO STA. _____		
FED. ROAD DIST. NO. _____		ILLINOIS FED. AID PROJECT		

STATE OF ILLINOIS
DEPARTMENT OF TRANSPORTATION

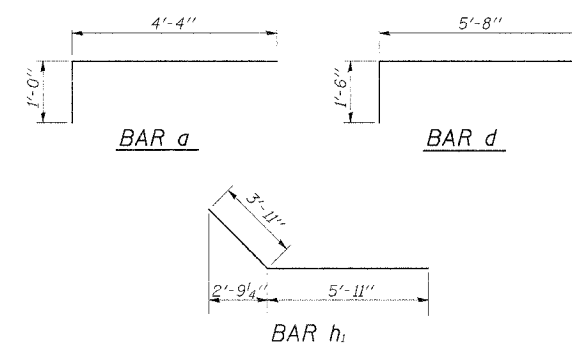


HALF LONG. SECTION

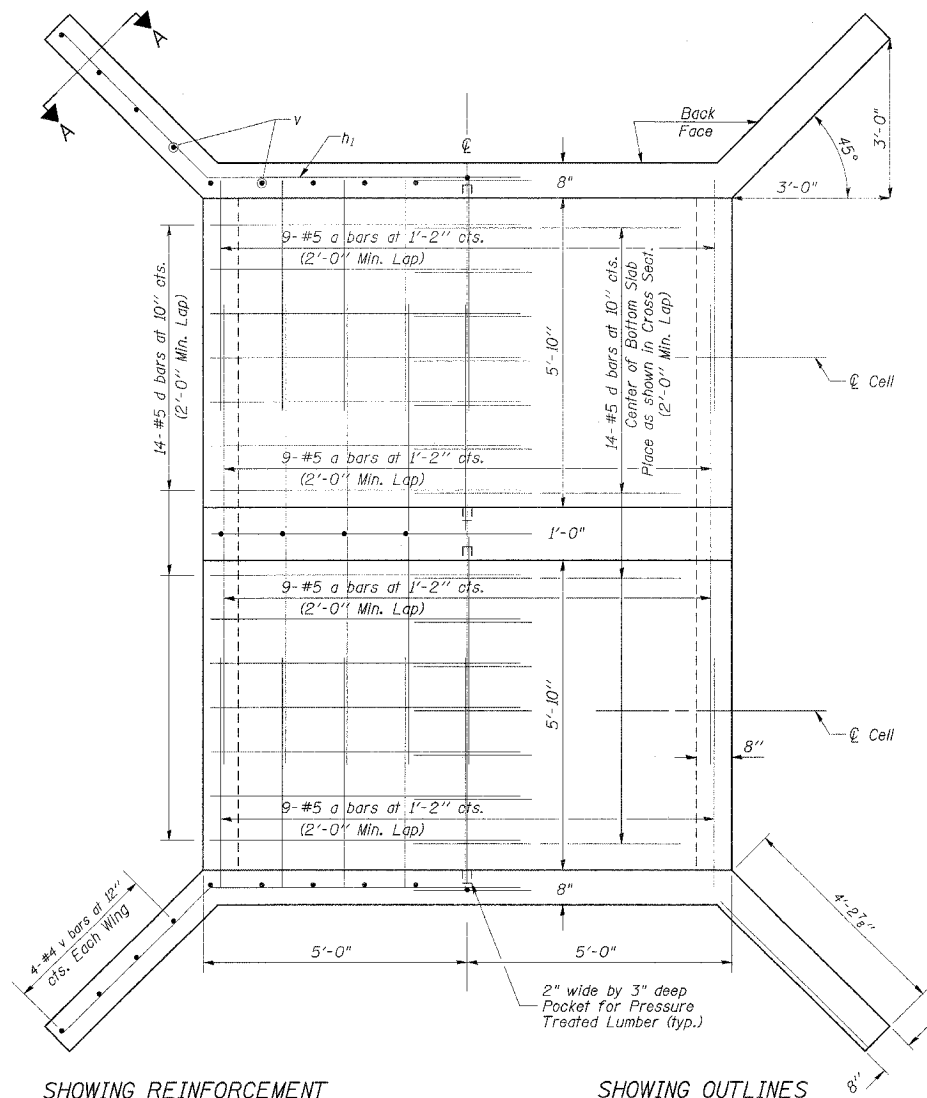
HALF ELEVATION



SECTION THRU BARREL



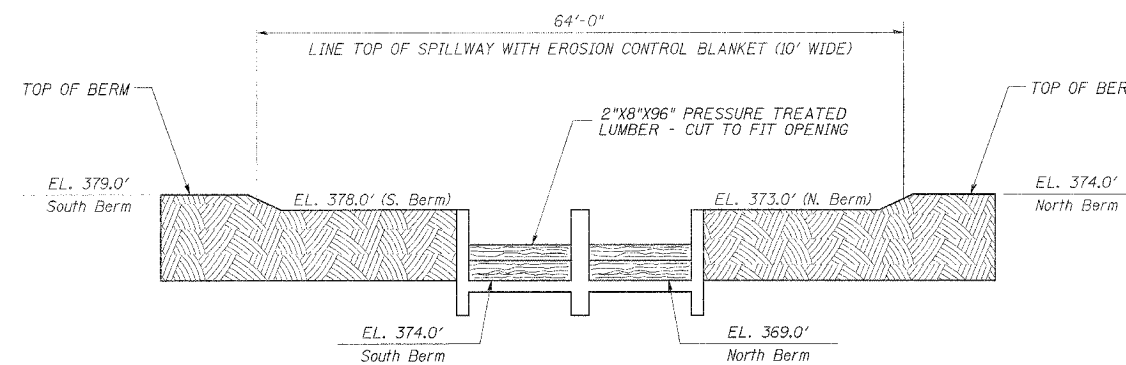
SPILLWAY DETAIL



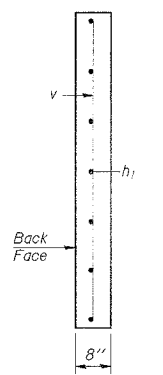
SHOWING REINFORCEMENT

SHOWING OUTLINES

PLAN



Top of Lumber Elevations: South Spillway = 375.25'
North Spillway = 370.25'



SECTION A-A

NOTES

The entire barrel shall be poured monolithically with the wingwalls. Exposed edges shall be beveled 3/4". For backfilling and embankment, see Standard Specifications. Reinforcement Bars shall conform to the requirements of AASHTO M-31, M-42 or M-53, Grade 60. All reinforcement shall be placed in the center of each wall or slab. In addition, all clear distances shall be at least 2". The sections of Pressure Treated Lumber shall be included in the cost of Concrete Structures. The quantities shown are for one structure. There are two identical structures included in the contract.

BILL OF MATERIAL

Bar	No.	Size	Length	Shape
a	36	#5	5'-4"	U
a1	2	#5	13'-4"	—
d	28	#5	7'-2"	U
h	7	#5	9'-8"	—
h1	14	#5	9'-10"	—
v	47	#4	5'-8"	—
Concrete Structures			Cu. Yd.	11.35
Reinforcement Bars			Pound	830
2"x8"x96" Pressure Treated Lumber			Each	4

PLOT DATE = 10/15/2006
 PLOT SCALE = 50.0000 / IN.
 USER NAME = thomashf