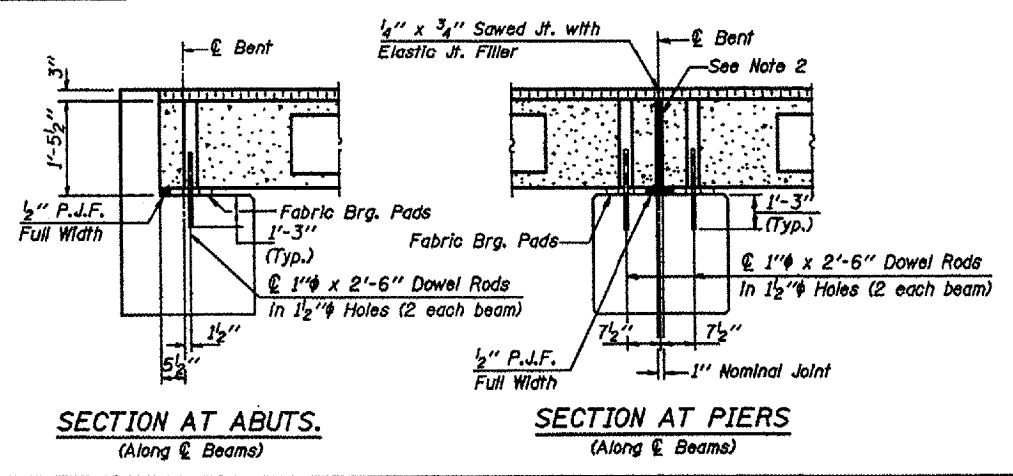
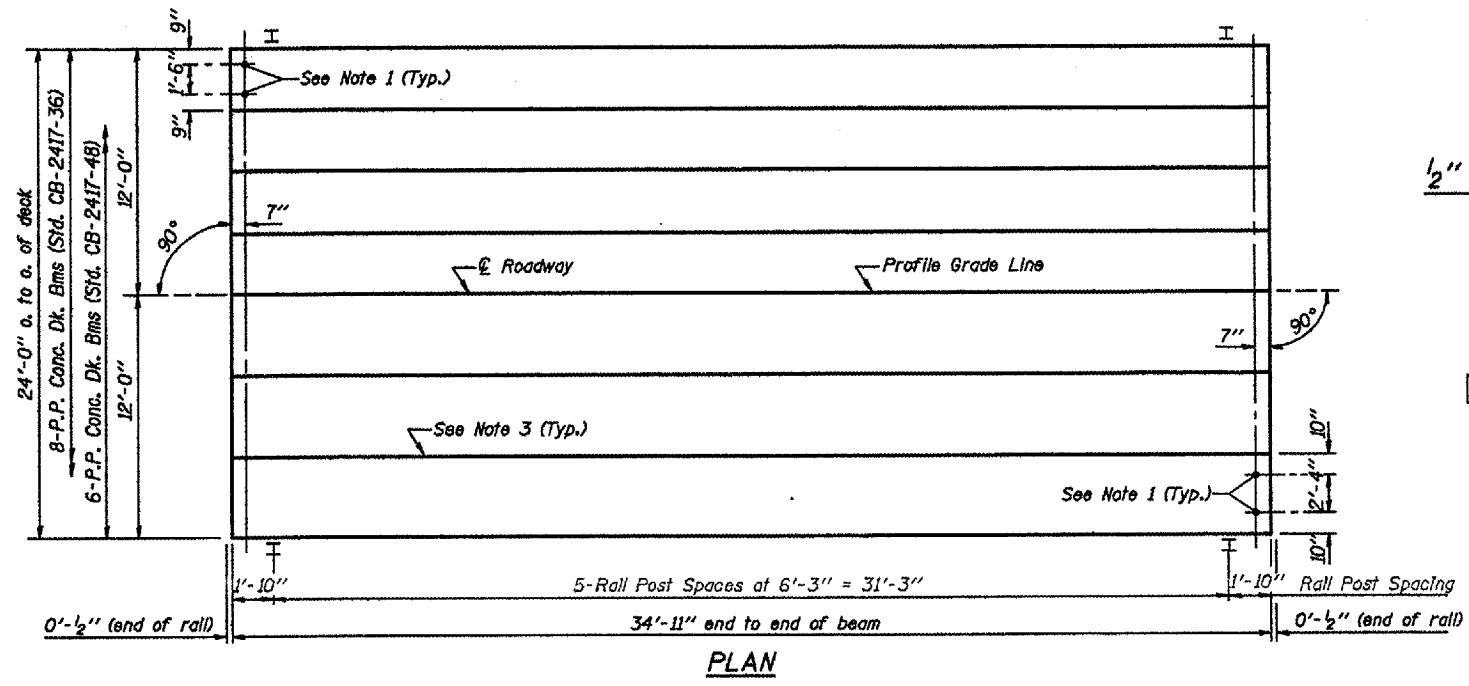
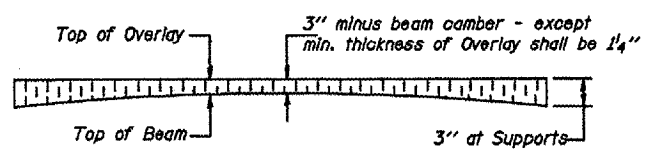
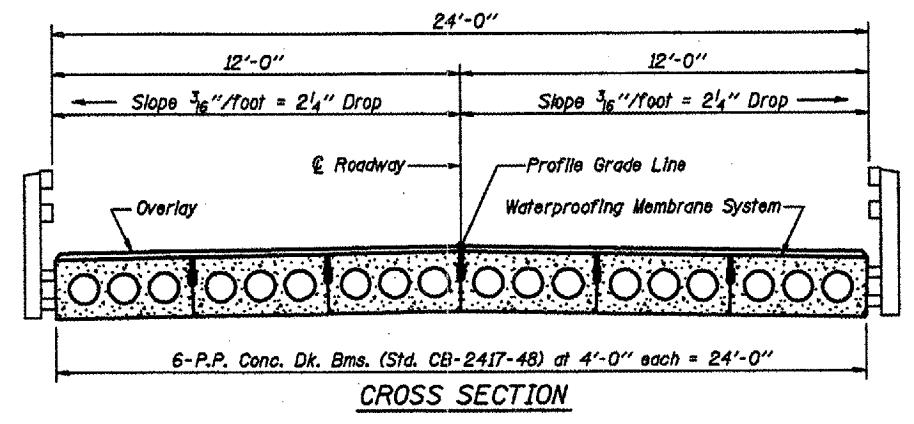
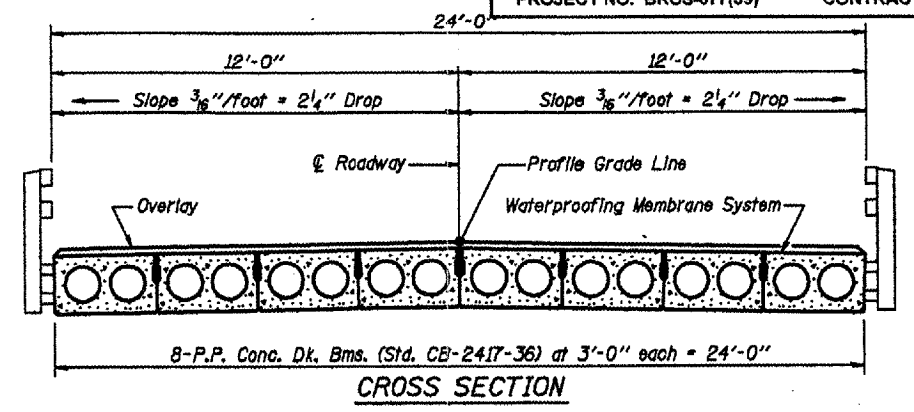


Beam	W	Wo
36"	2'-1"	1'-0 1/2"
48"	2'-5"	1'-2 1/2"

1/2" FABRIC BRG. PAD DETAILS



NOTES

- After beams have been erected, holes shall be drilled into substructure and anchor dowels placed. Dowel holes shall be filled with non-shrink grout to top of beam and allowed to cure min. 24 hrs. prior to grouting the shear keys.
- Nominal 1" joint at \mathcal{C} Pier shall be filled with non-shrink grout.
- Longitudinal keys shall be grouted.

QUANTITIES FOR ONE SPAN

P.P. Conc. Dk. Bm. 17" Dp.	840 Sq. Ft.
Steel Rolling	70 Ft.
Waterproofing Membrane System	93.3 Sq. Yds.
Portland Cement Mortar	245 Ft. 36"
Fairing Course	175 Ft. 48"

Note: Quantity of overlay for one span = 13.1 Tons

P.P.C. DECK BEAM SUPERSTRUCTURE

24' RDWY. 17" BMS. 35' SPAN 0° SKEW

STANDARD CS-2417-35

Illinois Department of Transportation

PASSED APRIL 4, 2005

Thomas J. Nappaloni
Engineer of Office Design

APPROVED APRIL 4, 2005

Ralph E. Anderson
Engineer of Bridges and Structures