

ROUTE	SECTION	COUNTY	TOTAL SHEETS	SHEET NO.
9545	03-00133-00-RP	SALINE	43	12
SALINE COUNTY		LIBERTY ROAD		
CONTRACT NO. 99274				

MARVIN B. & SALLY S. HORTON

ELIZABETH L. SHIMP



**HORIZONTAL CURVE DATA ②**

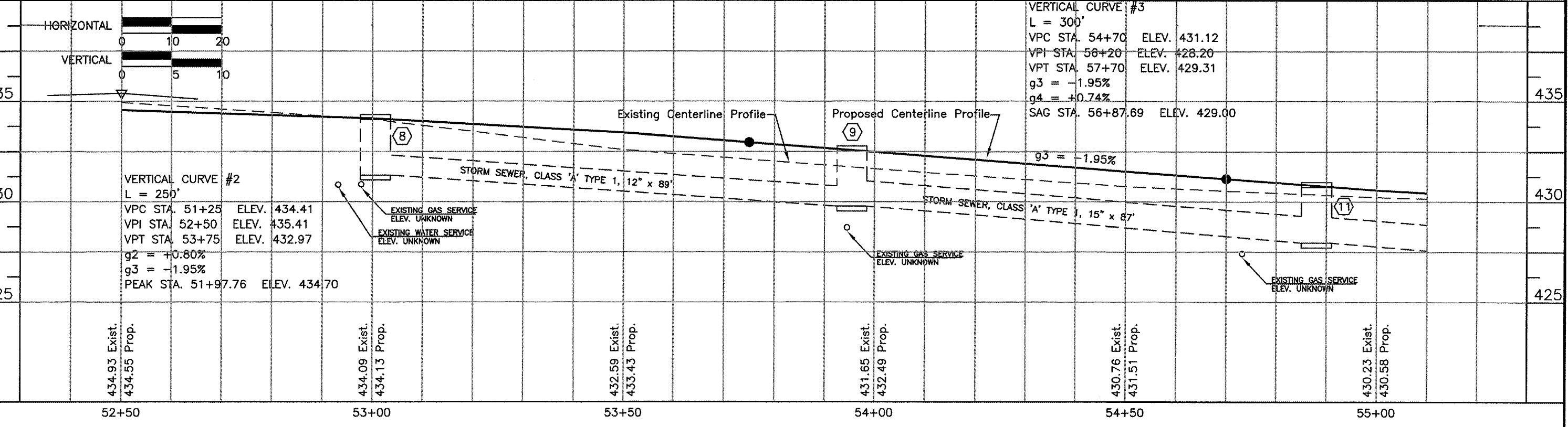
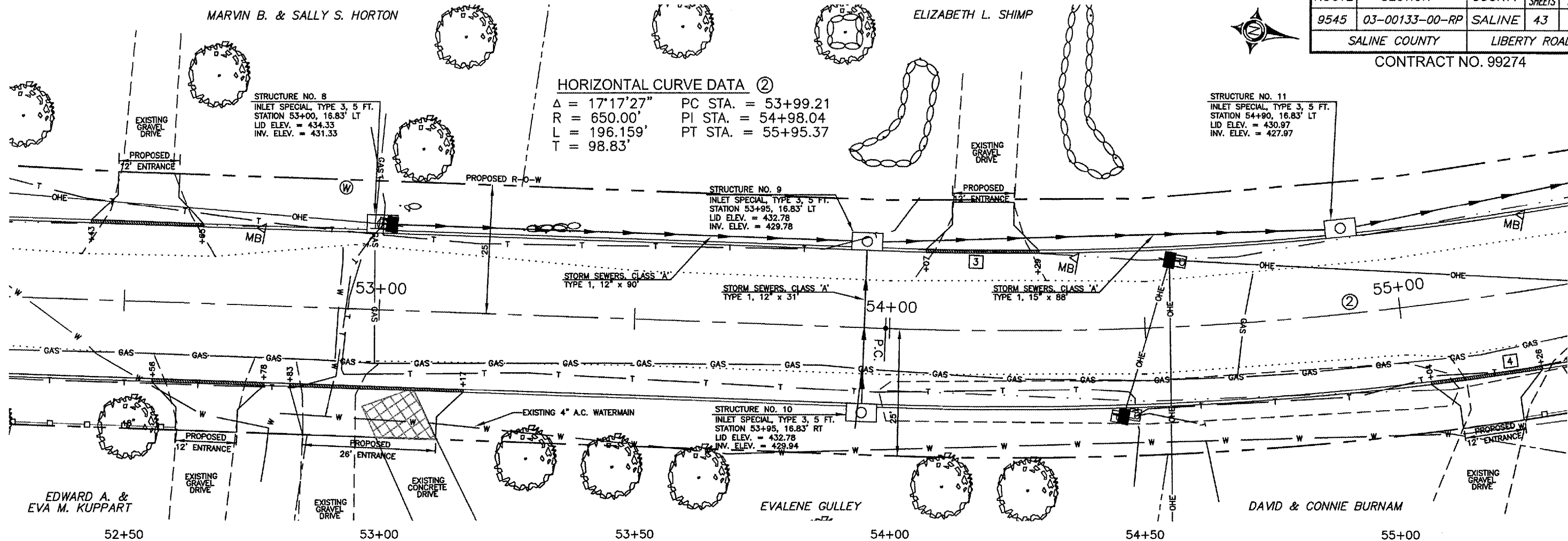
$\Delta = 17^{\circ}17'27''$  PC STA. = 53+99.21  
 $R = 650.00'$  PI STA. = 54+98.04  
 $L = 196.159'$  PT STA. = 55+95.37  
 $T = 98.83'$

STRUCTURE NO. 8  
 INLET SPECIAL, TYPE 3, 5 FT.  
 STATION 53+00, 16.83' LT  
 LID ELEV. = 434.33  
 INV. ELEV. = 431.33

STRUCTURE NO. 11  
 INLET SPECIAL, TYPE 3, 5 FT.  
 STATION 54+90, 16.83' LT  
 LID ELEV. = 430.97  
 INV. ELEV. = 427.97

STRUCTURE NO. 9  
 INLET SPECIAL, TYPE 3, 5 FT.  
 STATION 53+95, 16.83' LT  
 LID ELEV. = 432.78  
 INV. ELEV. = 429.78

STRUCTURE NO. 10  
 INLET SPECIAL, TYPE 3, 5 FT.  
 STATION 53+95, 16.83' RT  
 LID ELEV. = 432.78  
 INV. ELEV. = 429.94



03 Nov 2006 - 4:25pm X:\2003\03060\pc\plans\10-25plan & profile.dwg Layout Tab '52+50'