

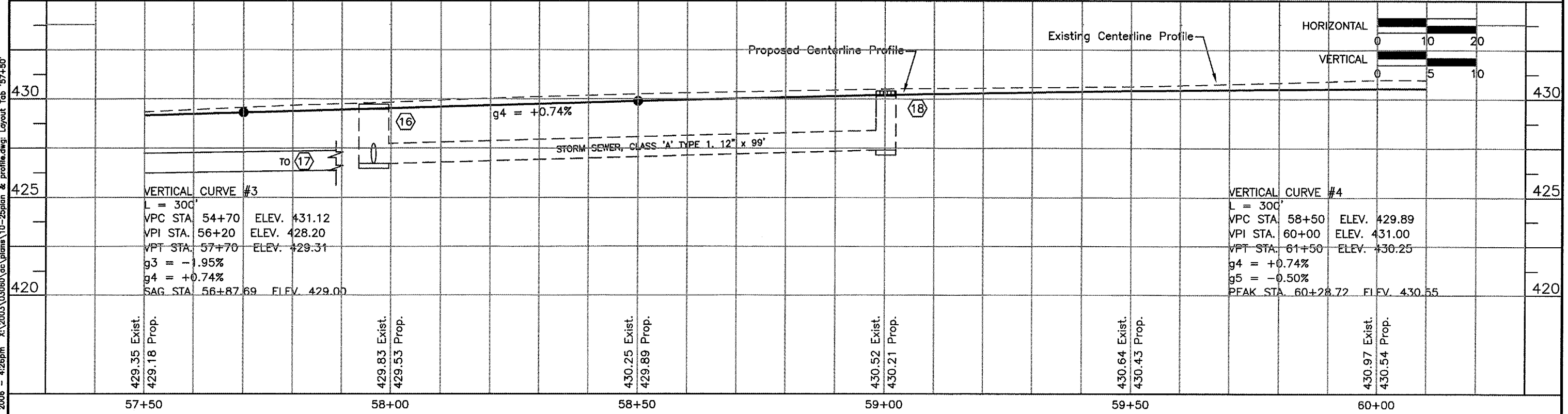
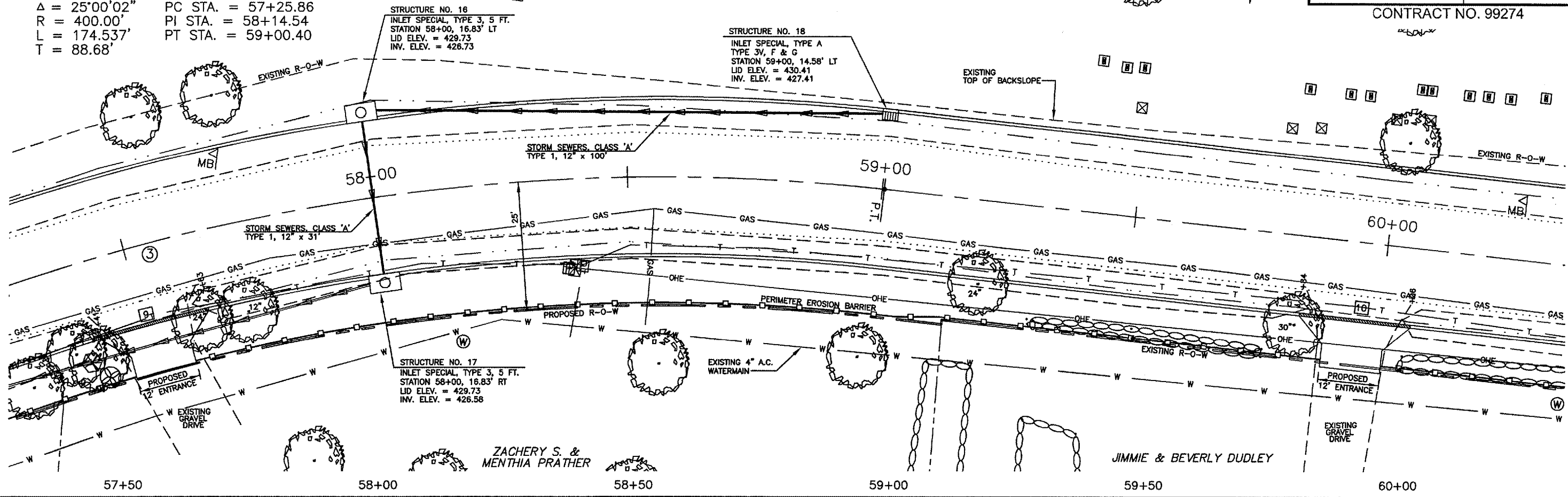
ROUTE	SECTION	COUNTY	TOTAL SHEETS	SHEET NO.
9545	03-00133-00-RP	SALINE	43	14
SALINE COUNTY		LIBERTY ROAD		

CONTRACT NO. 99274

HORIZONTAL CURVE DATA ③

$\Delta = 25^{\circ}00'02''$ PC STA. = 57+25.86
 $R = 400.00'$ PI STA. = 58+14.54
 $L = 174.537'$ PT STA. = 59+00.40
 $T = 88.68'$

LIBERTY BAPTIST CHURCH
(BILL CUMMINS, TRUSTEE*)



03 Nov 2006 - 4:26pm X:\2003\03060\cc\plans\10-25\plan & profile.dwg: Layout Tab '57+50'