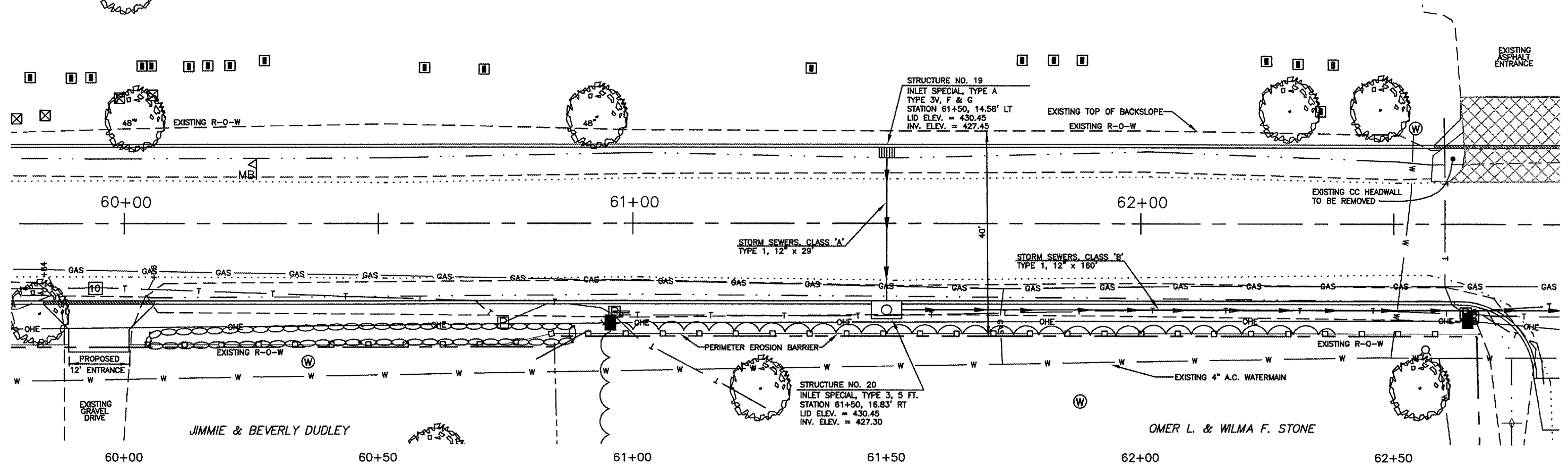


LIBERTY BAPTIST CHURCH  
(BILL CUMMINS, TRUSTEE\*)



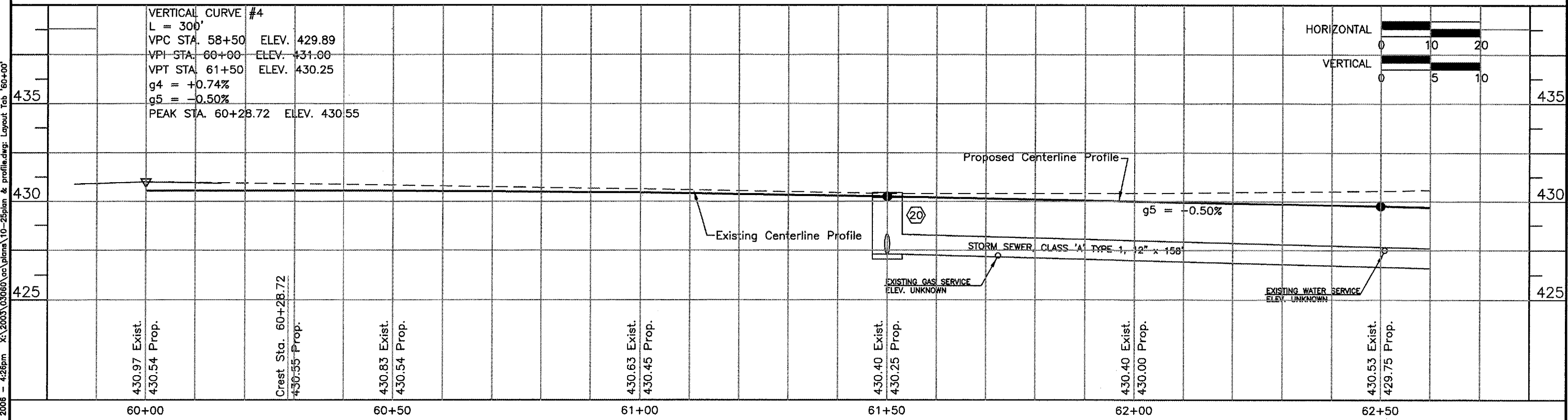
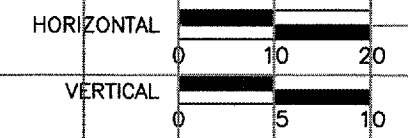
ROUTE	SECTION	COUNTY	TOTAL SHEETS	SHEET NO.
9545	03-00133-00-RP	SALINE	43	15
SALINE COUNTY		LIBERTY ROAD		

CONTRACT NO. 99274



VERTICAL CURVE #4

L = 300'	
VPC STA. 58+50	ELEV. 429.89
VPI STA. 60+00	ELEV. 431.00
VPT STA. 61+50	ELEV. 430.25
g4 = +0.74%	
g5 = -0.50%	
PEAK STA. 60+28.72	ELEV. 430.55



Station	Existing Elevation	Proposed Elevation
60+00	430.97	430.54
60+28.72		Crest Sta. 60+28.72
60+50	430.83	430.54
61+00	430.63	430.45
61+50	430.40	430.25
62+00	430.40	430.00
62+50	430.53	429.75

03 Nov 2008 - 4:26pm X:\2003\03060\03\plans\10-25\plan & profile.dwg: Layout Tab '60+00'