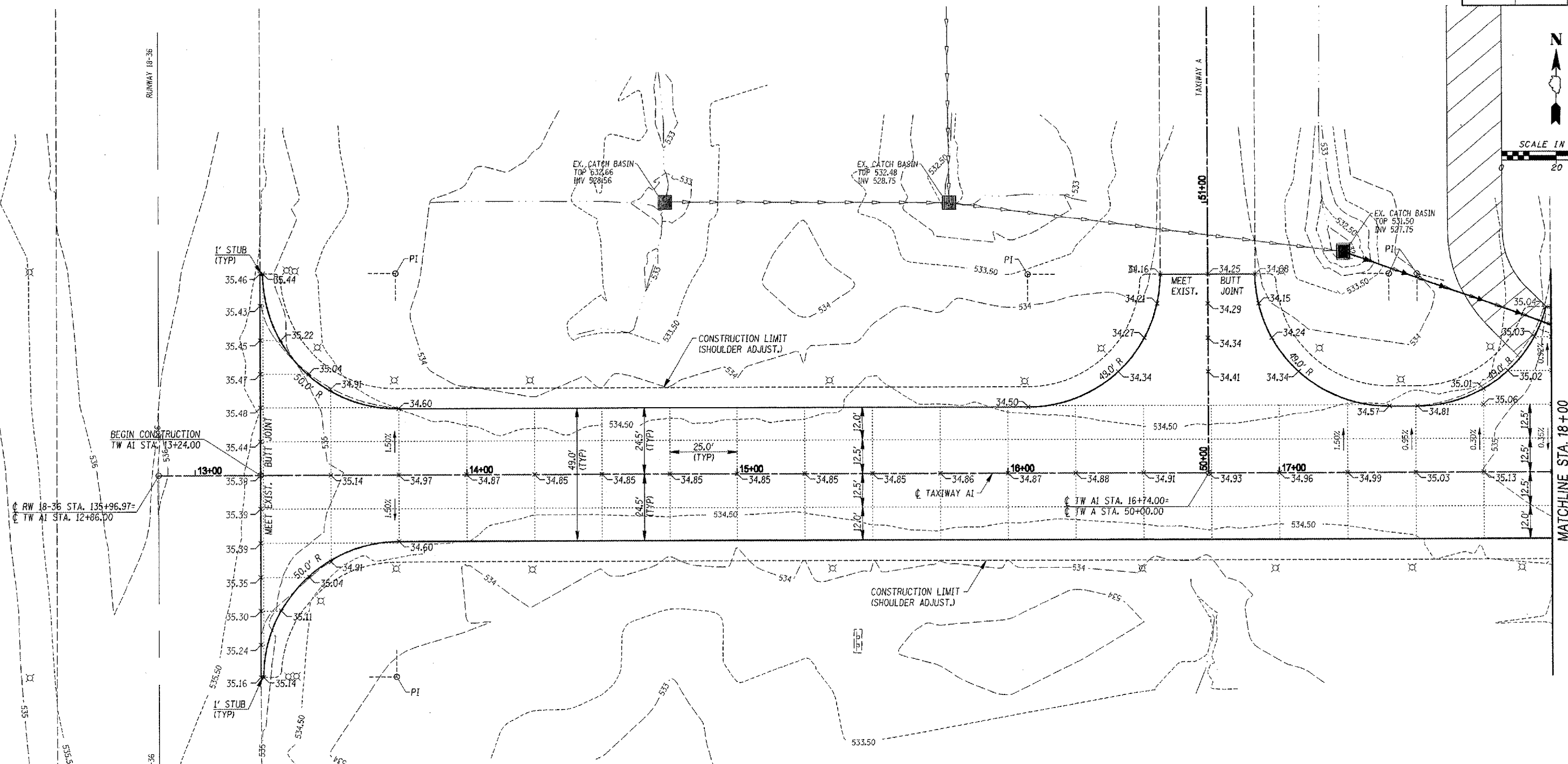
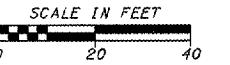


CONTRACT NUMBER	COUNTY	TOTAL SHEETS	SHEET NO.
GRO02	BOND	30	13



NOTES

1. FOR CLARITY, ELEVATIONS SHOWN ARE MINUS 500.00 (i.e. 35.52 = 535.52)
2. SEE SHEETS 7 AND 8 FOR TYPICAL PAVEMENT SECTIONS
3. SEE SHEET 16 FOR BUTT JOINT AND MILLING DETAILS
4. THE JOINT LINES SHOWN REPRESENT THE ASSUMED PAVING LANES. THE CONTRACTOR MUST PAVE THE AC SURFACE COURSE IN 12.5' LANE WIDTHS ON TAXIWAY A1 AND THE MAIN APRON. THE JOINTS SHALL MATCH THE JOINTS ALONG THE PCC SECTION. THE CONTRACTOR MAY SUBMIT AN ALTERNATE PLAN FOR JOINT LAYOUT TO THE ENGINEER FOR APPROVAL.
5. THE CONSTRUCTION LIMITS ARE SHOWN ON THIS SHEET BY A DASHED LINE (-----). ALL EARTH EXCAVATION AND/OR EMBANKMENT WILL BE PAID FOR UNDER THE SHOULDER ADJUSTMENT ITEM. ALL EARTHWORK WITHIN THE PROPOSED LIMITS SHOWN ON THE PLANS WILL BE DEFINED AS SHOULDER ADJUSTMENT AND NO ADDITIONAL COMPENSATION WILL BE MADE FOR THE CONTRACTOR TO RESTORE AREAS OUTSIDE OF THE LIMITS SHOWN.
6. SEE SHEETS 3 THROUGH 5 FOR STAGING AND TRAFFIC CONTROL DETAILS

DATE	DESCRIPTION OF THE REVISIONS	BY
09-20-06	REVISED AND REPACKAGED FOR JAN. '07 LETTING	RGH

GREENVILLE AIRPORT AUTHORITY GREENVILLE, ILLINOIS

HENRY, MEISENHEIMER & GENDE, INC.
ENGINEERS
CARLYLE, ILLINOIS 62231
www.hmgengineers.com
(618) 584-3711 Fax (618) 584-8217

**PROPOSED PAVING PLAN
BEGIN TO STA. 18+00.00**

IL. PROJ. NO.	GRE-3215
A.L.P. PROJ. NO.	3-17-0049-B4
FILE NAME	GA-PAVING01
DATE	01-19-2007

H.M.G. NO. 5536