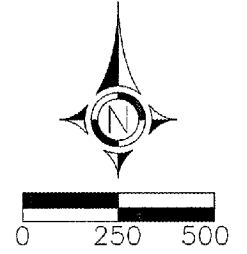
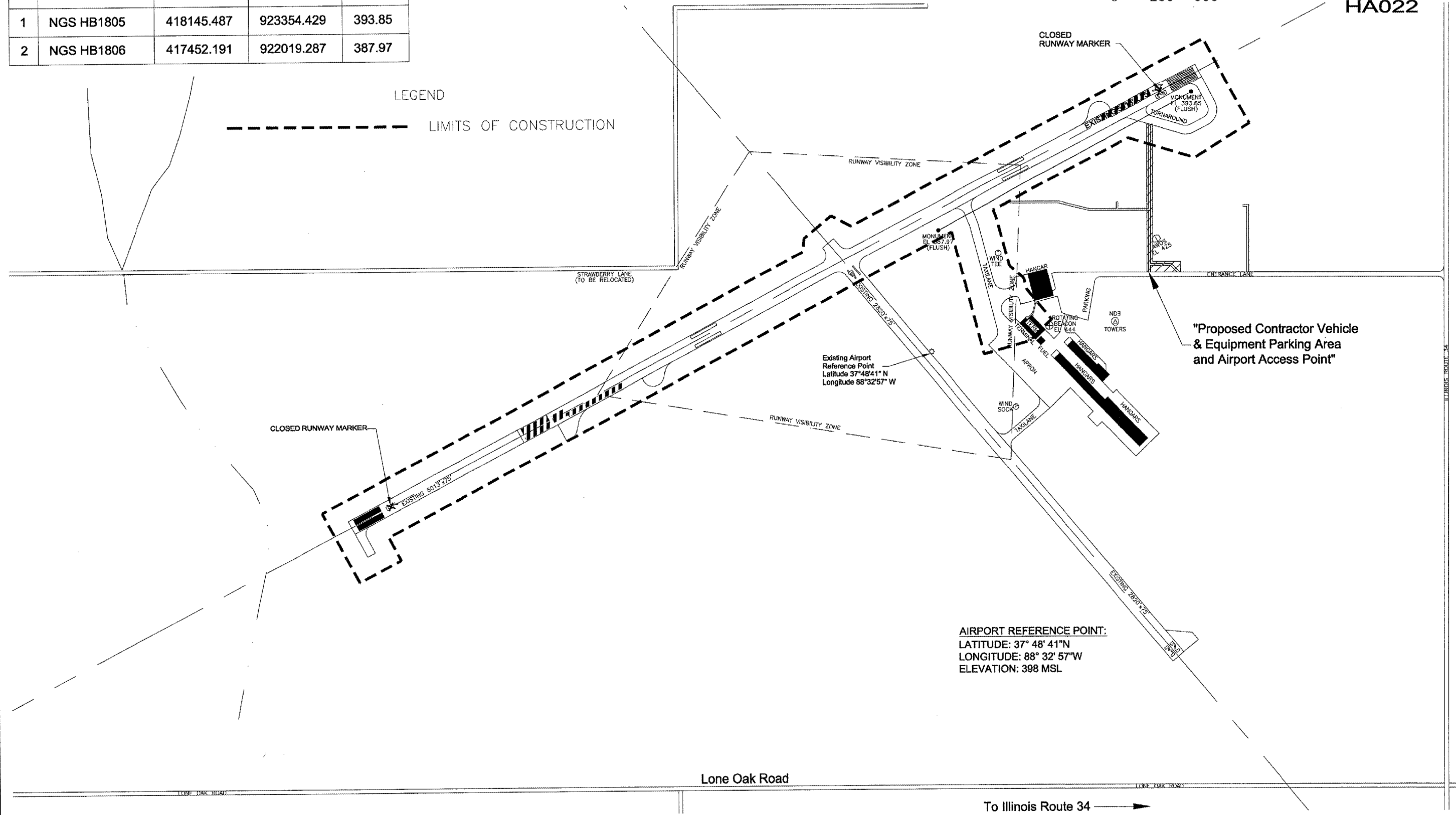


NOTES: 1. THE PROJECT SCOPE CONSISTS OF CONSTRUCTION OF TWO 4-BOX PAPI SYSTEMS, TWO REIL SYSTEMS, REMOVAL OF TWO VASI SYSTEMS, AND ASSOCIATED WIRING.



COORDINATE DATA				
NO	DESCRIPTION	NORTHING	EASTING	ELEV.
1	NGS HB1805	418145.487	923354.429	393.85
2	NGS HB1806	417452.191	922019.287	387.97

LEGEND
 - - - - - LIMITS OF CONSTRUCTION



AIRPORT REFERENCE POINT:
 LATITUDE: 37° 48' 41"N
 LONGITUDE: 88° 32' 57"W
 ELEVATION: 398 MSL

"Proposed Contractor Vehicle
 & Equipment Parking Area
 and Airport Access Point"

Lone Oak Road

To Illinois Route 34 →