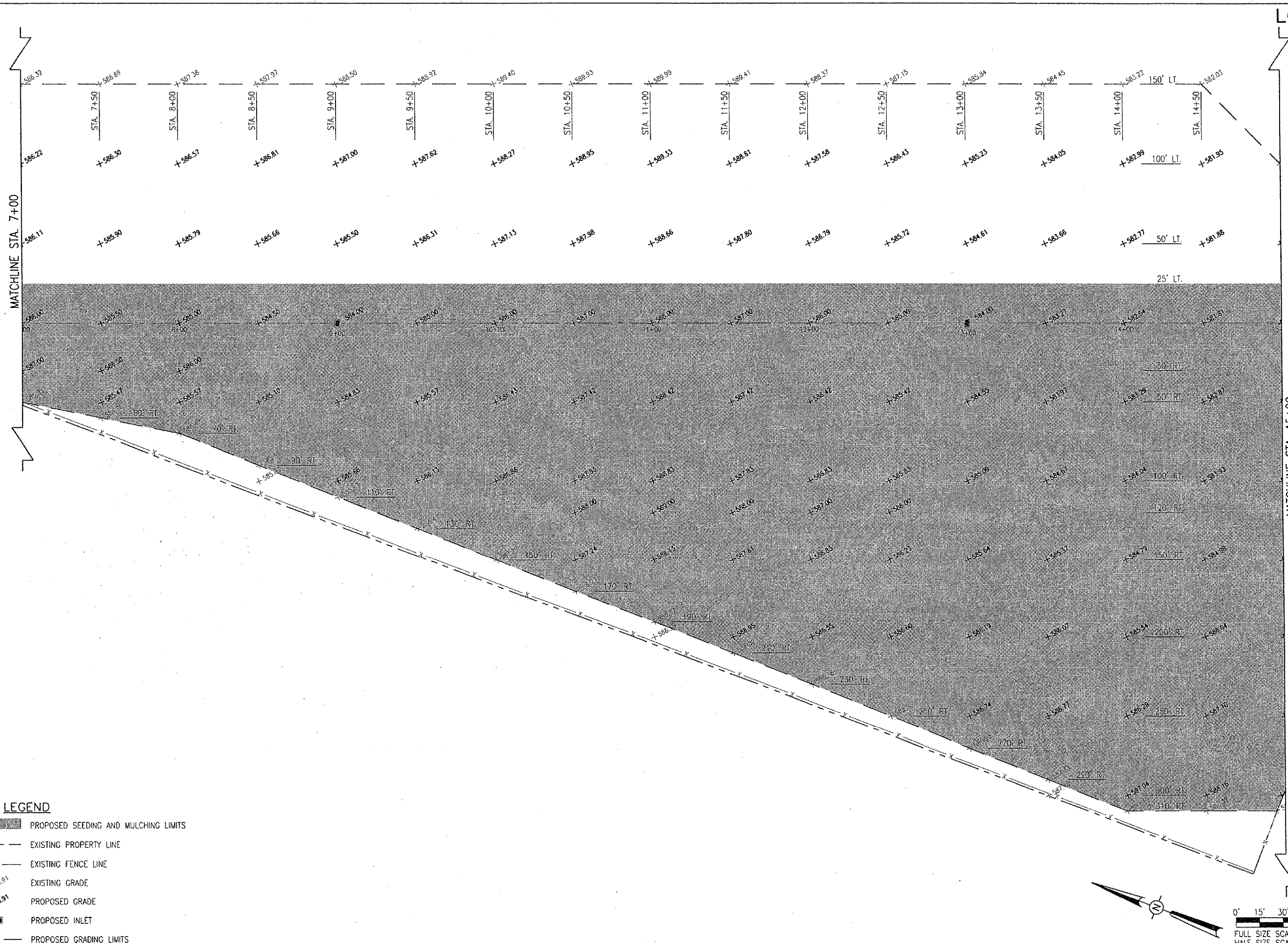


I:\AIRPORTS\LOGAN\813-0602\AIRPORT\PROJECTS\R-191\STK-SOUTH.DWG - STA. 7+00 TO STA. 15+00  
 8/22/06 7:48 AM CAH

**LEGEND**

- PROPOSED SEEDING AND MULCHING LIMITS
- EXISTING PROPERTY LINE
- EXISTING FENCE LINE
- EXISTING GRADE
- PROPOSED GRADE
- PROPOSED INLET
- PROPOSED GRADING LIMITS



LO025

MATCHLINE STA. 15+00

MATCHLINE STA. 7+00

DATE	REVISION	BY

**LOGAN COUNTY AIRPORT**  
**LINCOLN, ILLINOIS**

I.L. PROJ.: AA-3545      A.I.P. PROJ.: 3-17-0062-B13

I.L. Project No. 813-0602ND 0800  
 Drawing: R-191 STK-SOUTH.DWG  
 Scale: 1" = 30'  
 Date: 8/21/06

LAYOUT	DATE	BY
DRAWN	8/21/06	CC
REVIEWED	10/31/06	CAH

**HANSON**  
 Hanson Professional Services Inc.  
 1525 South Sixth Street  
 Springfield, Illinois 62703-2896  
 Offices Nationwide

**DRAINAGE IMPROVEMENTS**  
 PROPOSED STAKING PLAN  
 STA. 7+00 TO STA. 15+00