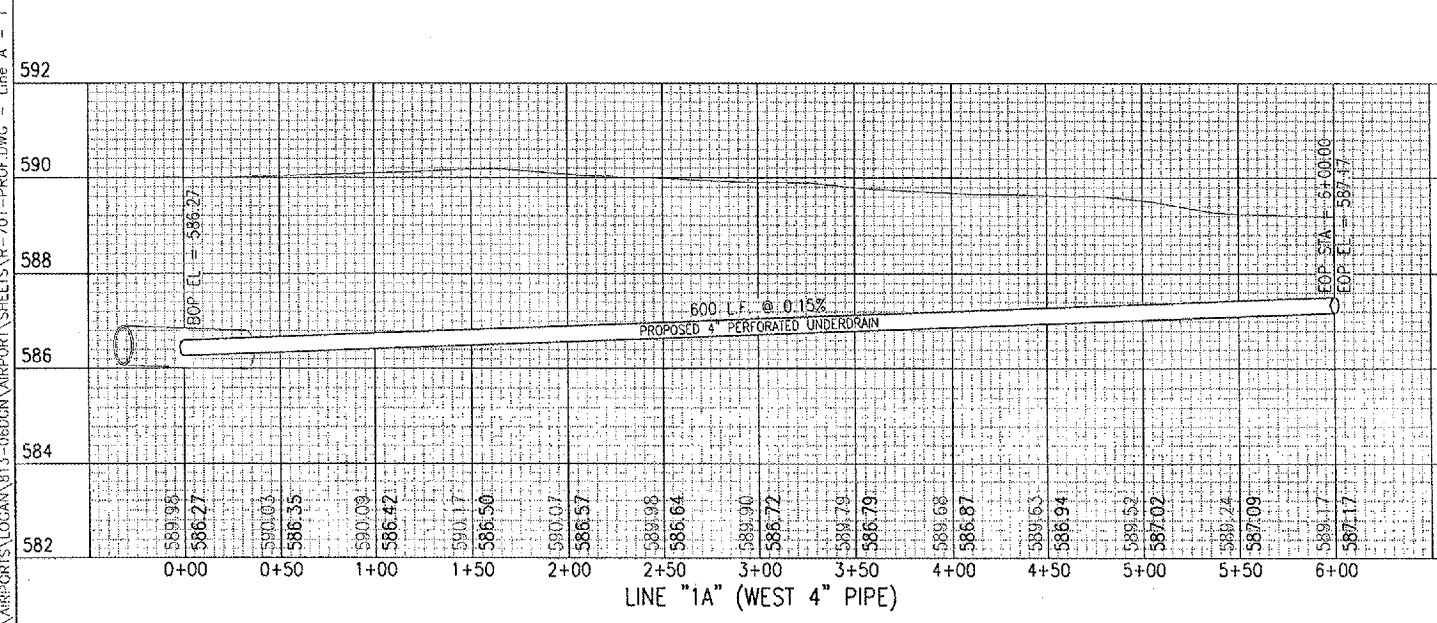
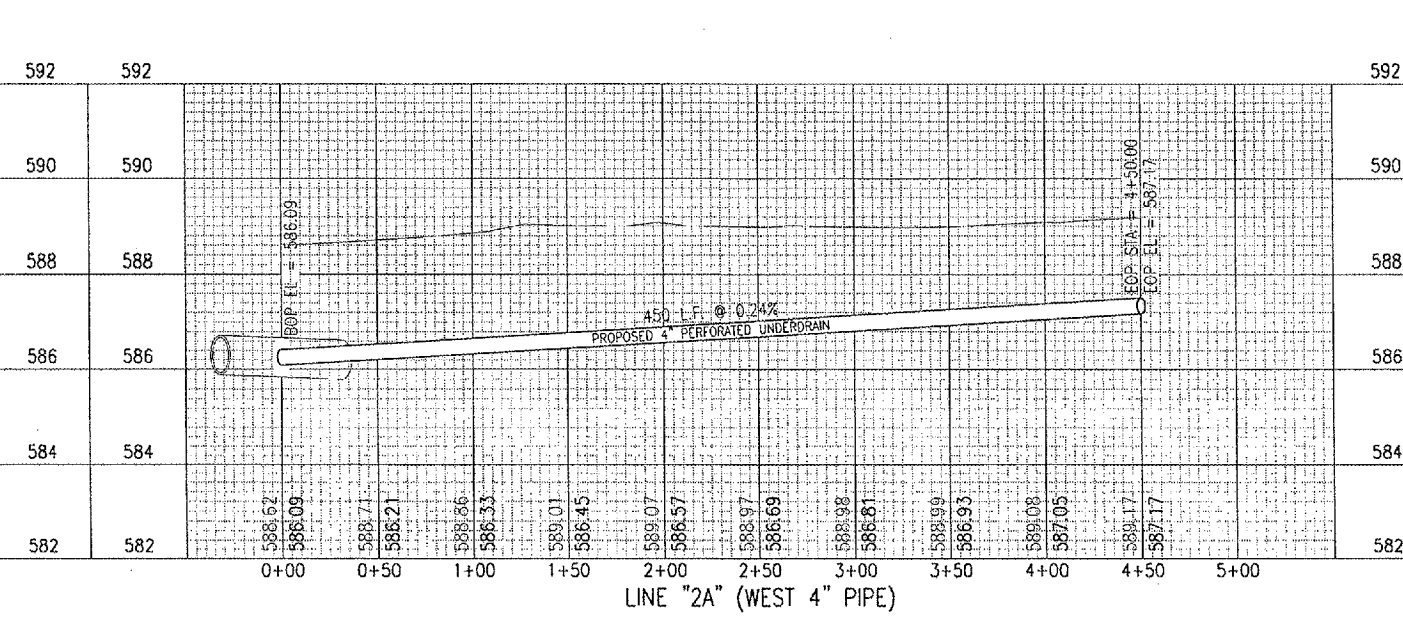


LINE "A" (WEST 10" PIPE)



LINE "1A" (WEST 4" PIPE)



LINE "2A" (WEST 4" PIPE)

PLOT 22, 2006 8:05 AM CAH
 I:\PROJECTS\LOGAN\813-06DCM\AIRPORT\SHEETS\R-701-PROF.DWG - Line A - 1

REVISION	DATE	BY

LOGAN COUNTY AIRPORT
 LINCOLN, ILLINOIS
 A.I.P. PROJ.: 3-17-0062-B13
 I.L. PROJ.: AAA-3545

I&E Project No. 813-06DCM.D800.
 Filename: R-701-PROF.DWG
 Scale: 1" = 50'H./1" = 2'V.
 Date: 09/07/06

LAYOUT	CCC	08/21/06
DRAWN	CCC	09/07/06
REVIEWED	CAH	10/31/06



DRAINAGE IMPROVEMENTS
 PROPOSED PIPE PROFILES
 LINE A, LINE 1A & LINE 2A