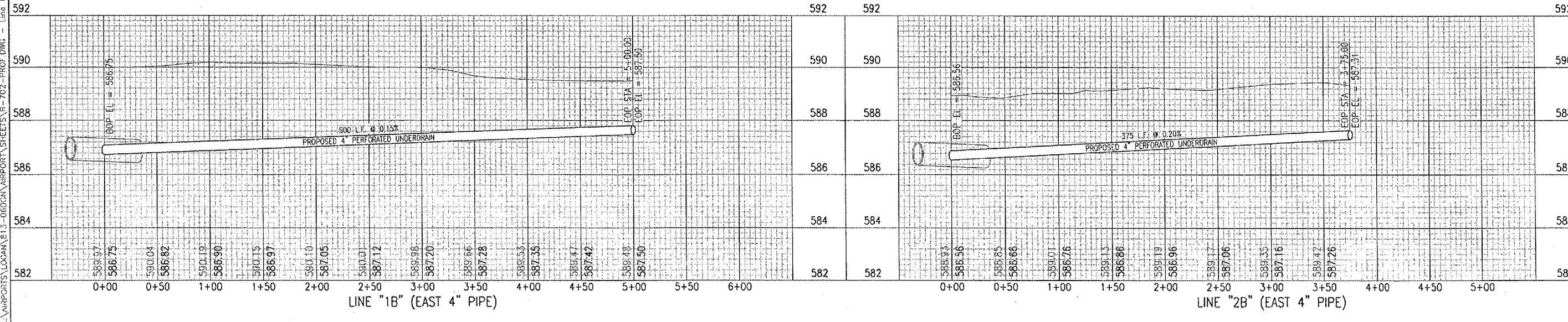
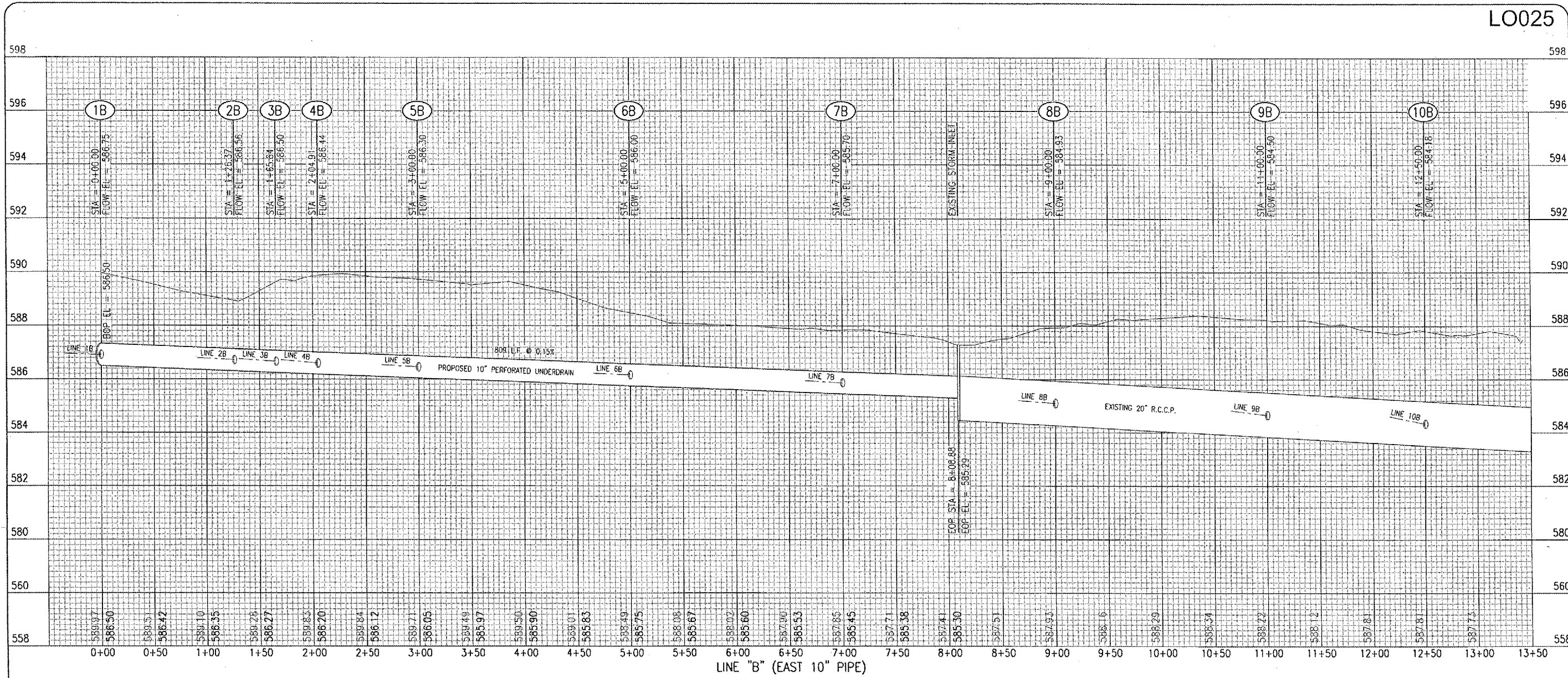


JUL 22, 2006 8:08 AM CAH  
 \\AIRPORTS\LOGAN\813-060GN\AIRPORT SHEETS\R-702-PROF DWG - Line B - 1



LO025

DATE	REVISION	BY

LOGAN COUNTY AIRPORT  
 LINCOLN, ILLINOIS

IL PROJ: AAA-3545 A.I.P. PROJ: 3-17-0062-813

DATE	REVIEWED	CAH
09/07/06	CCC	CCC
09/07/06	CCC	CCC
10/31/06	CAH	CAH

FILE PROJECT No. 813-060GND 0800  
 DRAWING R-702-PROF DWG  
 SCALE 1" = 50'H./1" = 2' V.  
 DATE 09/07/06



DRAINAGE IMPROVEMENTS  
 PROPOSED PIPE PROFILES  
 LINE B, LINE 1B & LINE 2B