

UN046

K:\Champaign\0505906\Draw\Sheets\A
 FILE: 4 STEPLN.dwg
 LAYOUT: 4 STEPLN
 UPDATE BY: msmejkal
 SURVEY BOOK #
 DATE: Fri 11/10/06 9:12am
 XREF DWG: Cmibase.dwg
 alp2a.dwg
 util_water.dwg
 util-airfield-elec.dwg
 UTIL-GAS.dwg
 UTIL-NONAIRFIELD-ELEC.dwg
 UTIL-SAN.dwg

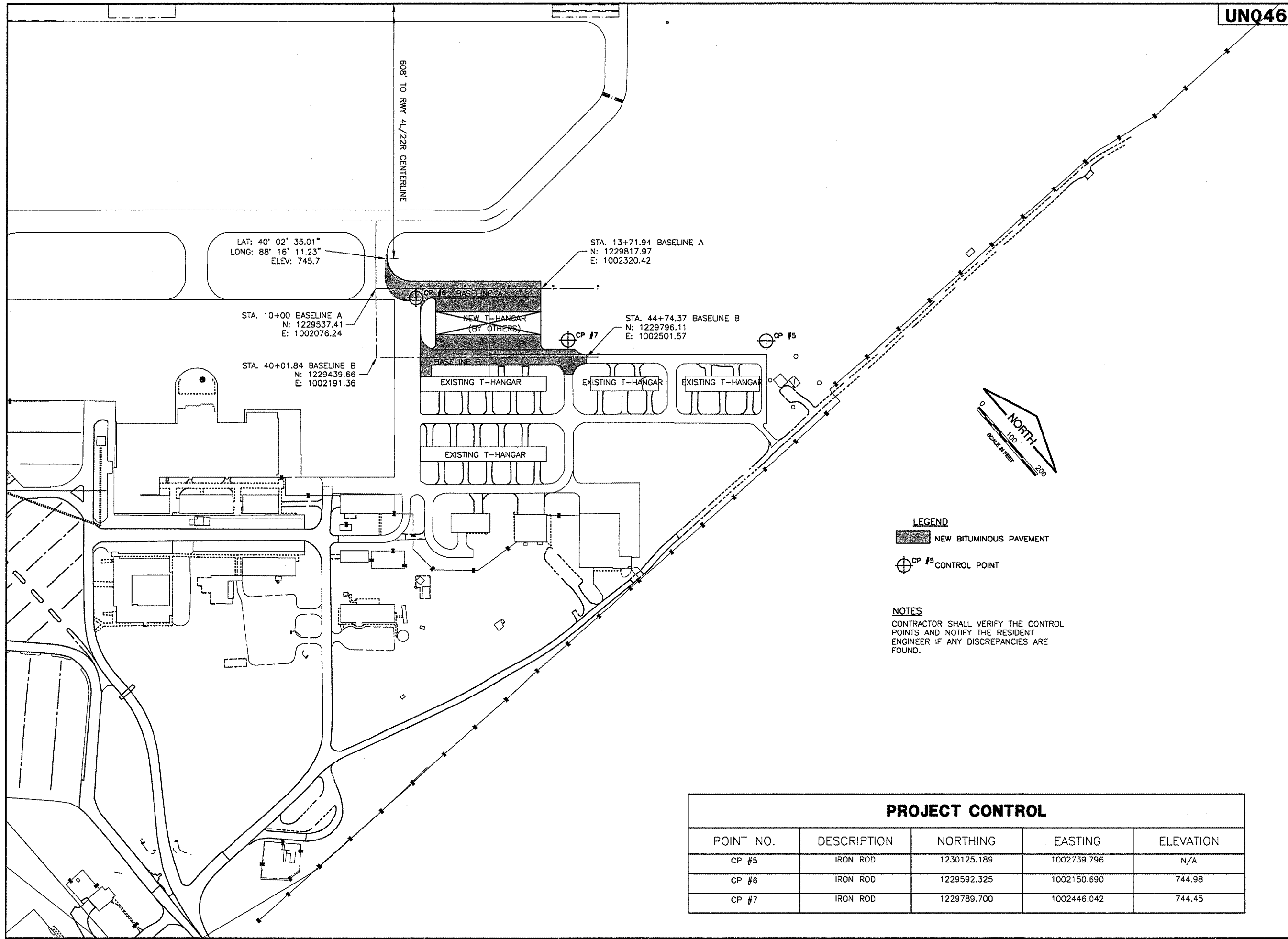
REVISIONS		
NUMBER	BY	DATE

0 1 2
 THIS BAR IS EQUAL TO 2"
 AT FULL SCALE (34X22).

UNIVERSITY OF ILLINOIS
 WILLARD AIRPORT
 CONSTRUCT N.E. T-HANGAR PAVEMENT
 PROJECT SITE PLAN

© Copyright CMT, Inc.
CMT
 CRANKFORD, MARRIOTT & TILLY, INC.
 CONSULTING ENGINEERS
 License No. 184-000615

DESIGN BY: MJS
 DRAWN BY: MJS
 CHECKED BY: MJS
 APPROVED BY:
 DATE: 11/16/2006
 JOB No: 0505906
 A.I.P. PROJECT: 3-17-0018-23
 IL. PRJ: CMI-3651
 SHEET 4 OF 17 SHEETS



LAT: 40° 02' 35.01"
 LONG: 88° 16' 11.23"
 ELEV: 745.7

STA. 10+00 BASELINE A
 N: 1229537.41
 E: 1002076.24

STA. 40+01.84 BASELINE B
 N: 1229439.66
 E: 1002191.36

STA. 13+71.94 BASELINE A
 N: 1229817.97
 E: 1002320.42

STA. 44+74.37 BASELINE B
 N: 1229796.11
 E: 1002501.57

LEGEND
 NEW BITUMINOUS PAVEMENT
 CP #5 CONTROL POINT

NOTES
 CONTRACTOR SHALL VERIFY THE CONTROL POINTS AND NOTIFY THE RESIDENT ENGINEER IF ANY DISCREPANCIES ARE FOUND.

PROJECT CONTROL				
POINT NO.	DESCRIPTION	NORTHING	EASTING	ELEVATION
CP #5	IRON ROD	1230125.189	1002739.796	N/A
CP #6	IRON ROD	1229592.325	1002150.690	744.98
CP #7	IRON ROD	1229789.700	1002446.042	744.45