

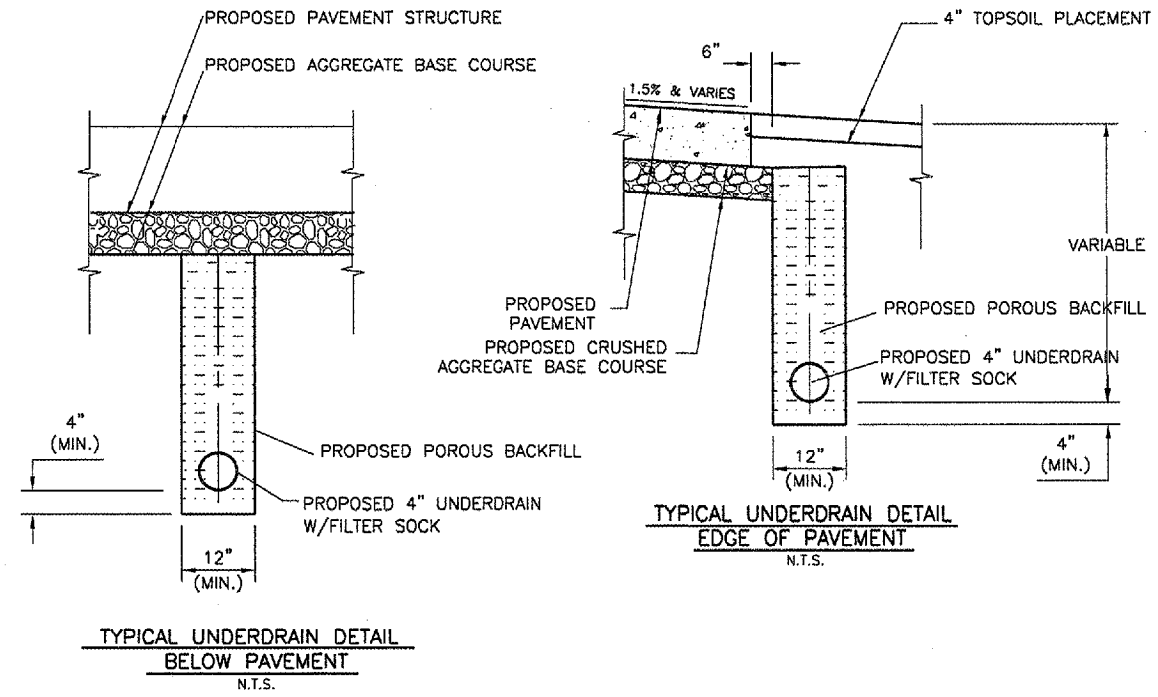
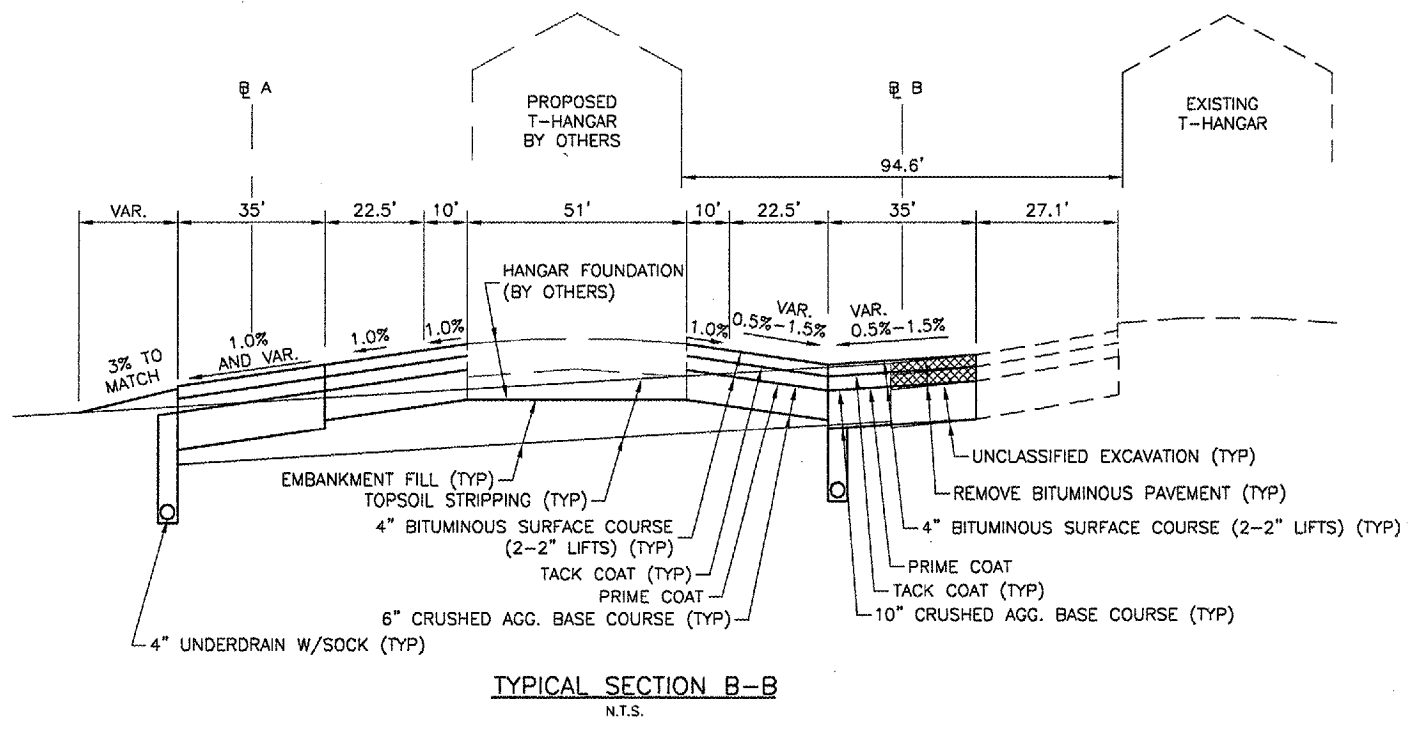
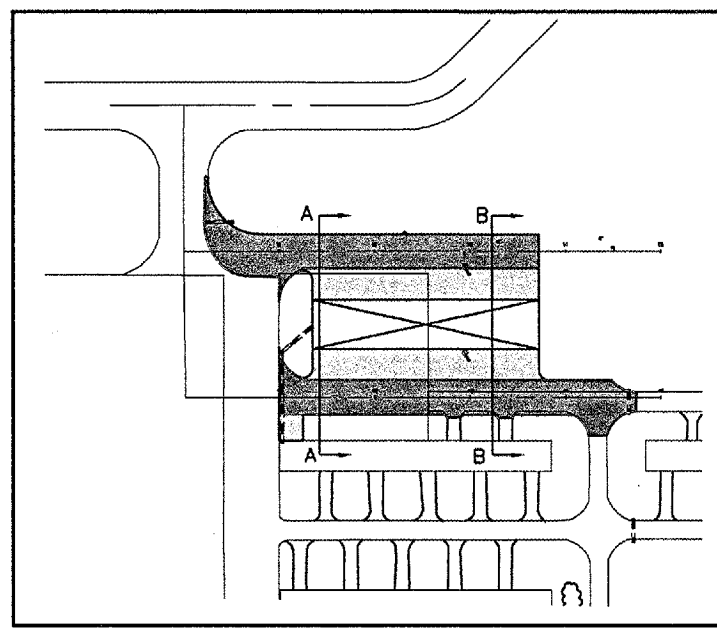
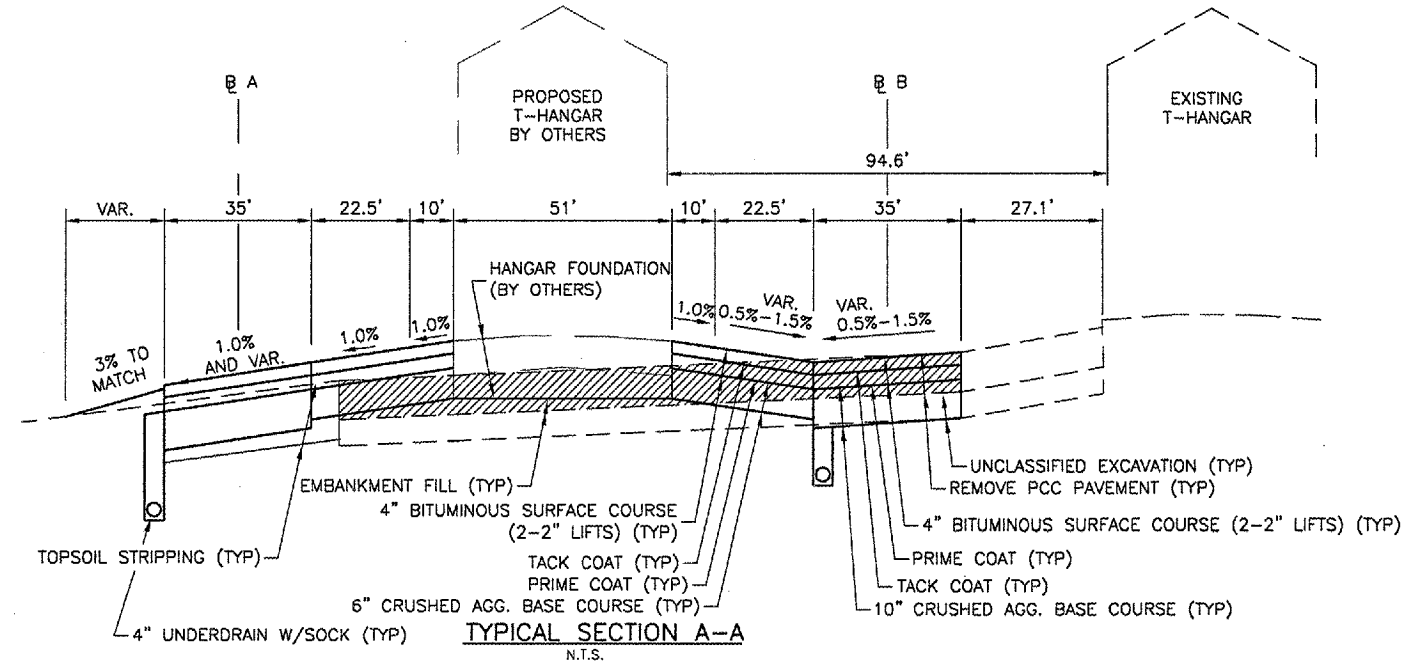
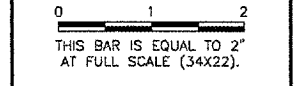
K:\Champaign\0505906\Draw\Sheets\  
 FILE: 9 TYPSECTIONS.dwg  
 UPDATE BY: msmejkal  
 SURVEY BOOK #  
 DATE: Thu 11/16/06 2:10pm  
 XREF DWG: C:\info.dwg  
 tb.dwg  
 C:\mbase.dwg  
 alp2a.dwg  
 IMAGE FILES: C:\base.dwg  
 utl-basefield-elec.dwg  
 UTIL-GAS.dwg  
 UTIL-NONAIRFIELD-ELEC.dwg  
 UTIL-SAN.dwg

**NOTES**

- EXISTING AGGREGATE BASE UNDER PAVEMENT REMOVAL AREAS SHALL BE CONSIDERED UNCLASSIFIED EXCAVATION AND MAY BE USED AS EMBANKMENT FILL AS NEEDED.
- CONTRACTOR SHALL CONSTRUCT SUBGRADE/EMBANKMENT FOR PROPOSED T-HANGAR. THE SUBGRADE SHALL BE CONSTRUCTED TO 10" BELOW THE FINISH FLOOR ELEVATION.
- CRUSHED AGGREGATE BASE COURSE SHALL BE CONSTRUCTED 1' OUTSIDE OF BITUMINOUS PAVEMENT EDGE.

REVISIONS

NUMBER	BY	DATE



**UNIVERSITY OF ILLINOIS**  
**WILLARD AIRPORT**  
**CONSTRUCT N.E. T-HANGAR PAVEMENT**  
**TYPICAL SECTIONS**

© Copyright CMT, Inc.  
**CMT**  
 CRAWFORD, MURPHY & TILLY, INC.  
 CONSULTING ENGINEERS  
 License No. 84-000613

DESIGN BY:	MJS
DRAWN BY:	MJS
CHECKED BY:	MJS
APPROVED BY:	
DATE:	11/16/2006
JOB No:	0505906
A.I.P. PROJECT:	3-17-0016-23
IL. PROJ:	CMI-3651
SHEET	9 OF 17 SHEETS