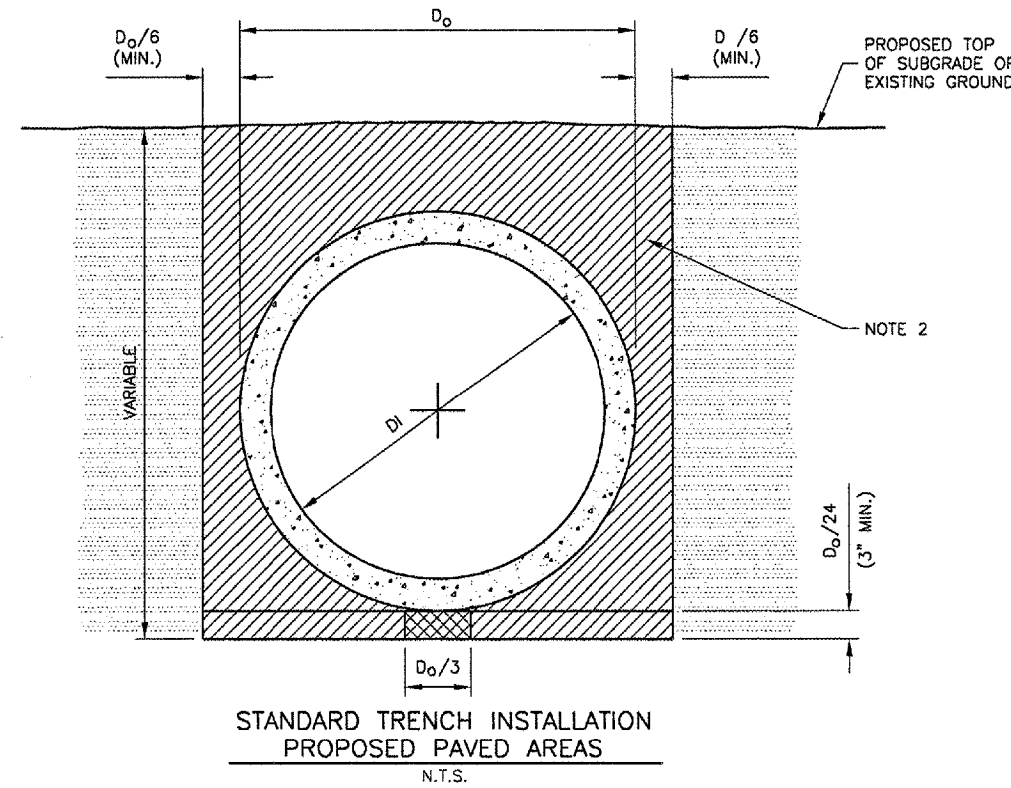


STANDARD TRENCH INSTALLATION  
 NON-PAVED AREA  
 N.T.S.



STANDARD TRENCH INSTALLATION  
 PROPOSED PAVED AREAS  
 N.T.S.

**LEGEND**

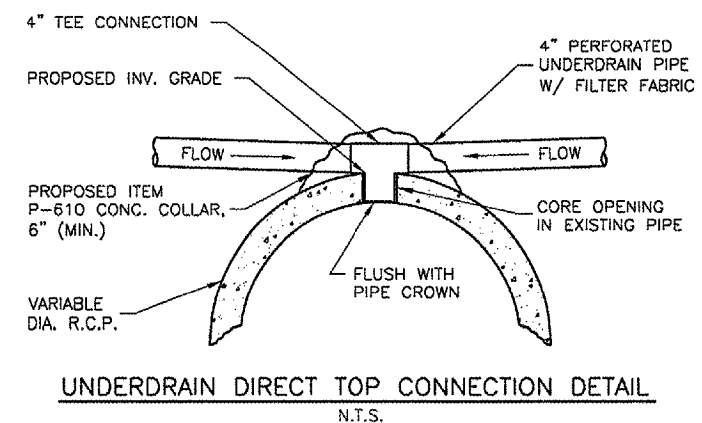
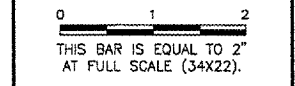
- DRAINAGE CONDUIT MATERIAL-CONCRETE
- MIDDLE BEDDING LOOSELY PLACED UNCOMPACTED BEDDING
- HAUNCH AND OUTER BEDDING COMPACTION- 95% STANDARD PROCTOR
- LOWER SIDE AND OVERFILL COMPACTION- SAME AS EMBANKMENT REQUIREMENTS

$D_0$  PIPE OUTSIDE DIAMETER  
 $D_1$  PIPE INSIDE DIAMETER

- NOTES**
- BEDDING SHOWN IS IN ACCORDANCE WITH "STANDARD EMBANKMENT INSTALLATIONS", STANDARD INSTALLATION & BEDDING FACTORS FOR THE INDIRECT DESIGN METHOD (DESIGN DATA 40), AMERICAN CONCRETE PIPE ASSOCIATION.
  - BACKFILL TO EXTEND 3' BEYOND EDGES OF PROPOSED PAVEMENT.

**REVISIONS**

NUMBER	BY	DATE



UNDERDRAIN DIRECT TOP CONNECTION DETAIL  
 N.T.S.

**REINFORCING BAR SCHEDULE**

TYPE	PER INLET	DIMENSIONS		SIZE	APPROX. WT. OF BARS IN INLET
		A	B		
A	2	3'4"	2'4"	#5	16.7

REINFORCING STEEL BARS TYPES

**REINFORCING BAR TYPE "A"**

TYPE 1 INLET  
 NOT TO SCALE

- NOTES**
- 1/2" CHAMFER TO BE USED ON ALL EXPOSED CORNERS ON INLETS. BARS TO BE INSTALLED 2" FROM FACE OF WALL.
  - INLET TO BE CONSTRUCTED OF STRUCTURAL P.C. CONCRETE. THE CONTRACT UNIT PRICE FOR INLET SHALL INCLUDE THE GRATE AND FRAME AS SPECIFIED.

UNIVERSITY OF ILLINOIS  
 WILLARD AIRPORT  
 CONSTRUCT N.E. T-HANGAR PAVEMENT  
 DRAINAGE DETAILS

© Copyright CMT, Inc.

**CMT**  
 CRAMFORD, MURPHY & TILLY, INC.  
 CONSULTING ENGINEERS  
 License No. BH-000615

DESIGN BY:	CMT
DRAWN BY:	CMT
CHECKED BY:	MJS
APPROVED BY:	
DATE:	11/16/2006
JOB No:	0505906
A.I.P. PROJECT:	3-17-0016-23
IL PROJ:	CMI-3651
SHEET	14 OF 17 SHEETS