



HANSON PROFESSIONAL SERVICES INC.

815 Commerce Drive, Suite 200
Oak Brook, Illinois 60523
Telephone: 630.990.3800
Fax: 630.990.3801

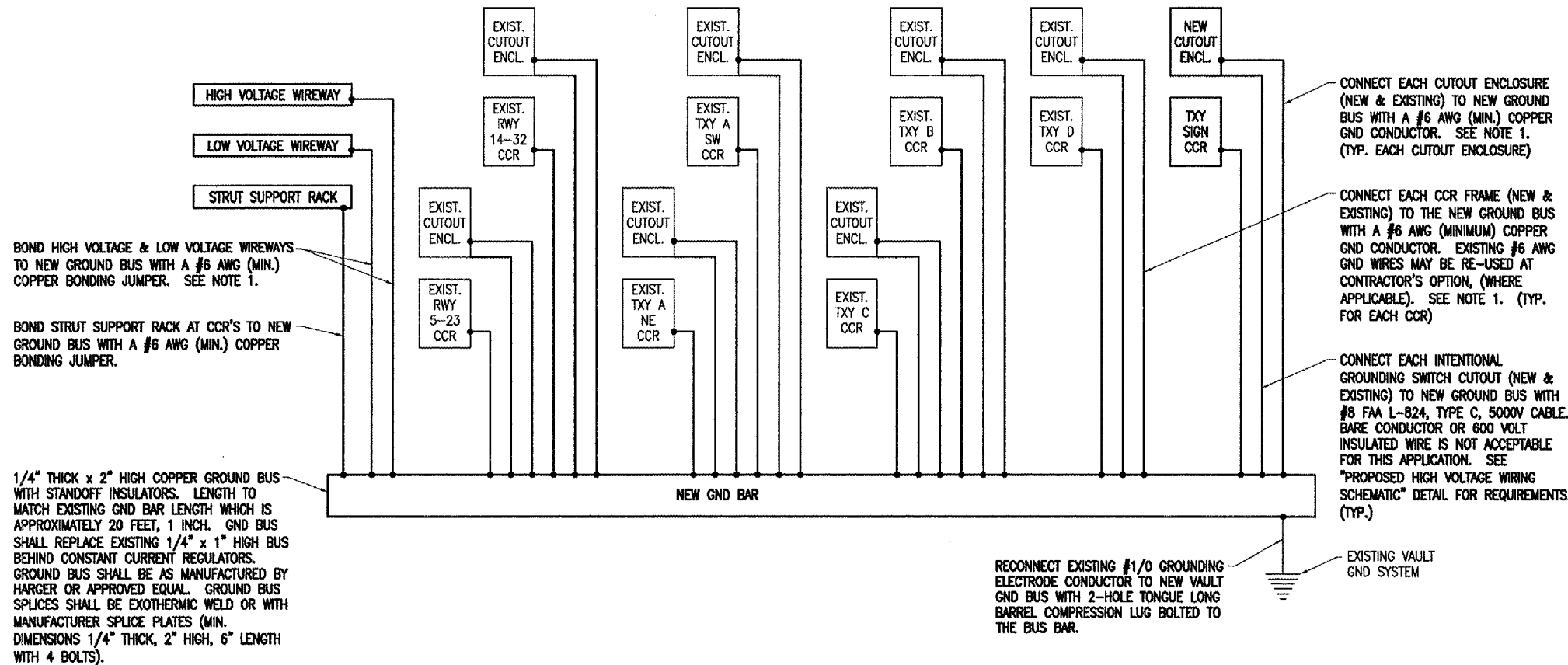


WAUKEGAN REGIONAL AIRPORT
WAUKEGAN PORT DISTRICT

3580 North McAre Road
Waukegan, Illinois 60087
Telephone: 847.244.0066
Fax: 847.244.3813

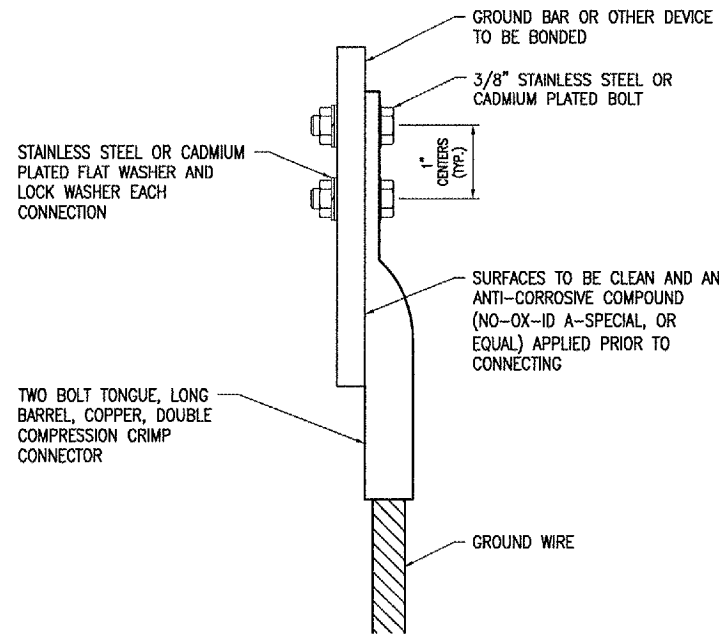
AIRFIELD SIGNAGE IMPROVEMENTS

AIP PROJECT NO. 3-17-0105-B35
IDA PROJECT NO. UGN-3650



- NOTES**
1. CONNECTIONS TO GROUND BUS BARS SHALL BE WITH 2-HOLE TONGUE LONG BARREL COMPRESSION LUGS BOLTED TO THE BUS BAR.
 2. GROUND WIRES FOR INTENTIONAL GROUNDING SWITCH SHALL BE FAA L-824, TYPE C, 5000V CABLE. ALL OTHER INSULATED GROUND WIRES SHALL HAVE GREEN COLORED INSULATION FOR ALL CONDUCTOR AWG AND KCMIL.
 3. CONSTANT CURRENT REGULATORS SHALL BE SHUT OFF PRIOR TO DISCONNECTING EXISTING FRAME GROUNDS AND SHALL REMAIN OFF UNTIL GROUNDING UPGRADES AND NEW GROUND CONNECTIONS ARE COMPLETED.
 4. ALL WORK SHOWN ON THIS SHEET SHALL BE PAID FOR UNDER ITEM AR109200 "INSTALL ELECTRICAL EQUIPMENT" PER LUMP SUM.

CCR GROUND BUS RISER



2 HOLE LONG BARREL COMPRESSION LUG TABLE

WIRE SIZE	BURNDY CAT. NO.	THOMAS & BETTS CAT. NO.
#8 AWG STRANDED	YA8C-2TC38	256-30695-1157
#6 AWG STRANDED	YA6C-2TC38	256-30695-1158
#2 AWG STRANDED	YA2C-2TC38	256-30695-1160
#1/0 AWG STRANDED	YA25-2TC38	256-30695-1162
#2/0 AWG STRANDED	YA26-2TC38	256-30695-1116
#3/0 AWG STRANDED	YA27-2TC38	54816BE
#4/0 AWG STRANDED	YA28-2TC38	256-30695-1117

- NOTES**
1. ALL CONNECTIONS TO GROUND BUS BAR SHALL BE WITH 2 HOLE TONGUE LONG BARREL COMPRESSION LUGS BOLTED TO THE BUS BAR.
 2. GROUND WIRE CONNECTIONS TO EQUIPMENT SHALL BE WITH 2 HOLE TONGUE LONG BARREL COMPRESSION LUGS BOLTED TO THE DEVICE OR WITH THE RESPECTIVE EQUIPT MANUFACTURER'S LUG OR TERMINAL WHERE APPLICABLE.
 3. GROUNDING ELECTRODE CONDUCTORS, BONDING JUMPERS, & INDIVIDUAL GROUND WIRES SHALL NOT BE INSTALLED IN METAL CONDUIT. WHERE PLASTIC CONDUIT IS USED FOR INDIVIDUAL GROUND WIRES, DO NOT COMPLETELY RENCIRCLE THE CONDUIT WITH FERROUS AND/OR MAGNETIC MATERIALS. WHERE METAL CLAMPS ARE INSTALLED USE NYLON BOLTS, NUTS, WASHERS, & SPACERS TO INTERRUPT A COMPLETE METALLIC PATH FROM ENCIRCLING THE CONDUIT.
 4. ALL CONNECTIONS SHALL BE COATED WITH A CORROSION PREVENTATIVE COMPOUND (SANCHEM INC. NO-OX-ID A-SPECIAL, OR BURNDY PENETROX E, OR APPROVED EQUAL) BEFORE JOINING. ALL COPPER BUS BARS SHALL BE CLEANED PRIOR TO MAKING CONNECTIONS TO REMOVE SURFACE OXIDATION. CLEAN SURFACES, OF RESPECTIVE DEVICES TO BE BONDED, TO BARE METAL, PER NEC 250-12.

GROUNDING LUG CONNECTION DETAIL

No.	Drawing Issue Description	Date	By

Date
NOVEMBER 10, 2006
Sheet Title

CCR GROUND BUS RISER AND GROUNDING DETAILS

831-06A8004	Project Number
KNL	09/01/06
KNL	09/01/06
RMH	11/10/06
MV	