

F.A.P. RATE	SECTION	COUNTY	TOTAL SHEETS	SHEET NO.
326	111BR-1)BC,BDS	GRUNDY	8	1
CONTRACT NO. 66H84				

STATE OF ILLINOIS
DEPARTMENT OF TRANSPORTATION

**PROPOSED
HIGHWAY PLANS**

F.A.P. 326 (IL 47)
SECTION (111BR-1)BC,BDS
PROJECT NHPRXPVS(932)
BRIDGE WASHING & CONCRETE SEALING
GRUNDY COUNTY

C-93-021-18

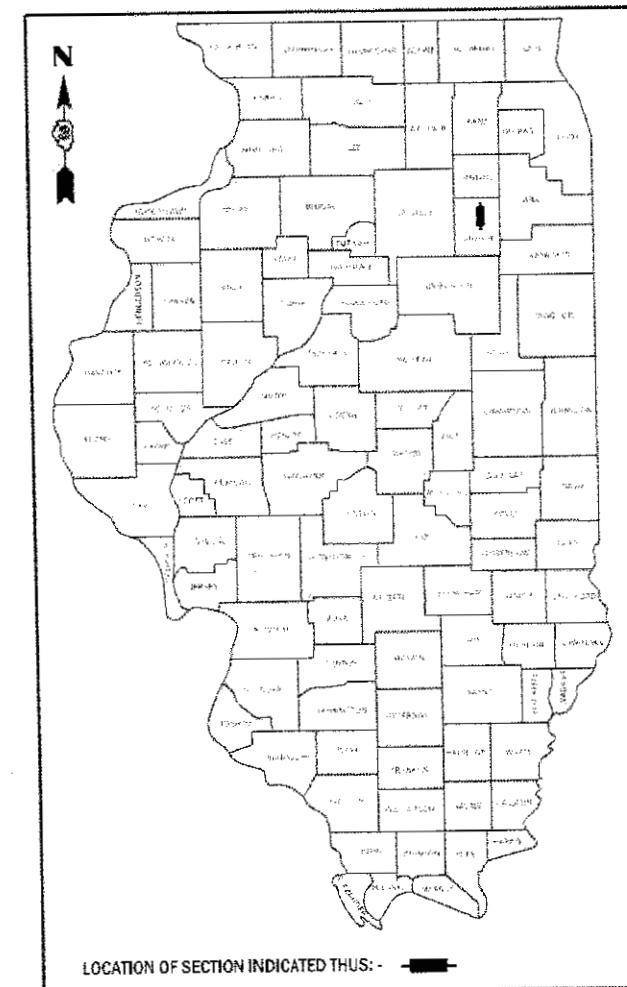
STANDARDS

1. COVER SHEET
2. GENERAL NOTES
3. SUMMARY OF QUANTITIES
4. TYPICAL SECTIONS
5. SCHEDULES
- 6 - 8. EXISTING STRUCTURE DETAILS (FOR INFORMATION ONLY)

STANDARDS

- | | |
|-----------|--|
| 000001-06 | STANDARD SYMBOLS, ABBREVIATIONS AND PATTERNS |
| 001006 | DECIMAL OF AN INCH AND OF A FOOT |
| 701101-05 | OFF-ROAD OPERATIONS, MULTILANE, 15' (4.5 m) TO 24' (600 mm) FROM PAVEMENT EDGE |
| 701106-02 | OFF-ROAD OPERATIONS, MULTILANE, MORE THAN 15' (4.5 m) AWAY |
| 701601-09 | URBAN LANE CLOSURE, MULTILANE, 1W OR 2W WITH NONTRAVERSABLE MEDIAN |
| 701602-09 | URBAN LANE CLOSURE, MULTILANE, 2W WITH BIDIRECTIONAL LEFT TURN LANE |
| 701801-05 | SIDEWALK, CORNER OR CROSSWALK CLOSURE |
| 701901-07 | TRAFFIC CONTROL DEVICES |

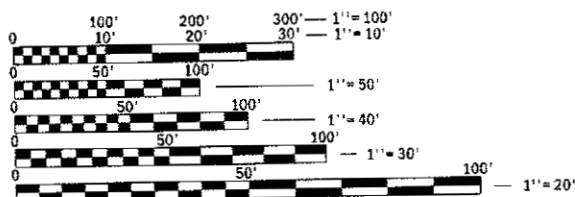
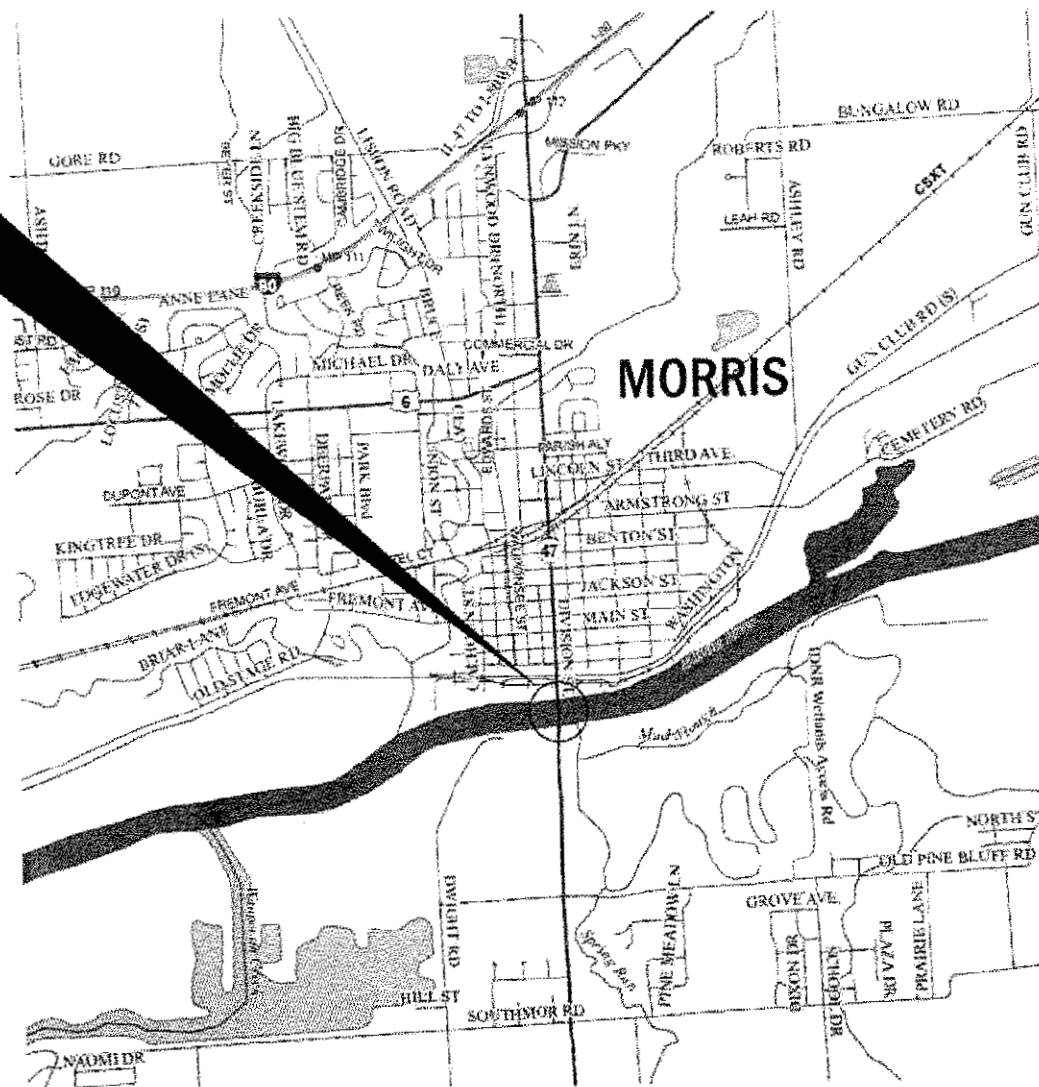
D-93-032-18



LOCATION OF SECTION INDICATED THUS: - [black rectangle] -

FUNCTIONAL CLASSIFICATION
URBAN OTHER ARTERIAL
F.A.P. ROUTE 326 (IL 47)
2015 ADT 18000
P.V. 86.1% S.U. 6.1% M.U. 7.8%

PROJECT LOCATION
STRUCTURE NO. 032-0099
CARRYING FAP ROUTE 326 (IL 47) OVER
THE ILLINOIS RIVER AND I&M CANAL
APPROXIMATELY 1.2 MILES SOUTH OF US ROUTE 6 IN MORRIS



FULL SIZE PLANS HAVE BEEN PREPARED USING STANDARD ENGINEERING SCALES. REDUCED SIZED PLANS WILL NOT CONFORM TO STANDARD SCALES. IN MAKING MEASUREMENTS ON REDUCED PLANS, THE ABOVE SCALES MAY BE USED.

J.U.L.I.E.
JOINT UTILITY LOCATION INFORMATION FOR EXCAVATION
1-800-892-0123
OR 811

PROJECT ENGINEER: JOE KANNEL P.E.
UNIT CHIEF: RON WOODSHANK
DISTRICT NO. 3 (815) 434-6131
CONTRACT NO. 66H84

GROSS LENGTH = 1731 FT. = 0.33 MILE
NET LENGTH = 1731 FT. = 0.33 MILE

STATE OF ILLINOIS
DEPARTMENT OF TRANSPORTATION

SUBMITTED: *Oct 17 2017*
[Signature]
REGIONAL ENGINEER

Nov 30 2017
Maureen M. Addis P.E.
ENGINEER OF DESIGN AND ENVIRONMENT

Nov 30 2017
[Signature]
DIRECTOR OF PROGRAM DEVELOPMENT

**PRINTED BY THE AUTHORITY
OF THE STATE OF ILLINOIS**

GENERAL NOTES

FOR STABILIZATION, ALL TYPE III BARRICADES WILL REQUIRE A MINIMUM OF FOUR SAND BAGS PER BARRICADE.

ANY REFERENCE TO A STANDARD IN THESE PLANS SHALL BE INTERPRETED TO MEAN THE EDITION AS INDICATED BY THE SUBNUMBER SHOWN IN THE LIST OF STANDARDS OR THE COPY INCLUDED IN THE PLANS.

COMMITMENTS

STATE OF ILLINOIS
DEPARTMENT OF TRANSPORTATION
DISTRICT THREE
AS BUILT INFORMATION

SUPERVISING CONSTRUCTION FIELD ENGINEER

RESIDENT ENGINEER / TECHNICIAN

START & END DATES
OF CONSTRUCTION:

INSPECTORS:

DATE:

10/17/17

PREPARED BY:

David Borsich (es)
DISTRICT STUDIES & PLANS ENGINEER

EXAMINED BY:

[Signature]
DISTRICT CONSTRUCTION ENGINEER
Michael A Short
DISTRICT MATERIALS ENGINEER
[Signature]
DISTRICT OPERATIONS ENGINEER

PROJECT NUMBER: 1001118A-118C-6DS
FILE NAME: 1001118A-118C-6DS-118C-6DS-AS-BUILT-1001

USER NAME = woodst-ank1	DESIGNED - RW	REVISED -
PLOT SCALE = 100.0000' / 1" =	DRAWN - RW	REVISED -
PLOT DATE = 10/11/2017	CHECKED - EP	REVISED -
	DATE - 9/5/2017	REVISED -

STATE OF ILLINOIS
DEPARTMENT OF TRANSPORTATION

GENERAL NOTES

SCALE: SHEET 1 OF 1 SHEETS STA. TO STA.

F&P ST#	SECTION	COUNTY	TOTAL SHEETS	SHEET NO.
326	11118A-118C-6DS	GRUNDY	8	2
			CONTRACT NO. 66H84	
ILLINOIS FED. AID PROJECT				

CONSTR. CODE
MBPM
80% FEDERAL 20% STATE
BRIDGE
0047
S.N. 032-0099

CODE NO.	ITEM	UNIT	TOTAL QUANTITY	
				150784
X5870015	BRIDGE DECK CONCRETE SEALER	SQ FT	150784	150784
59200101	BRIDGE WASHING NO. 1	EACH	1	1
67100100	MOBILIZATION	LSUM	1	1
70102630	TRAFFIC CONTROL AND PROTECTION, STANDARD 701601	LSUM	1	1
70102632	TRAFFIC CONTROL AND PROTECTION, STANDARD 701602	LSUM	1	1
70102640	TRAFFIC CONTROL AND PROTECTION, STANDARD 701801	LSUM	1	1
Z0030850	TEMPORARY INFORMATION SIGNING	SQ FT	42	42

MODEL - Default
FILE NAME - D:\ILLINOIS\BENTLEY\EG_IL\Illinois.gov\PWIDOT\Documental\DOT_C\I\kes\03series_3\Project\326484\CAD\DATA\0356184-1\1-sectable.dgn

7

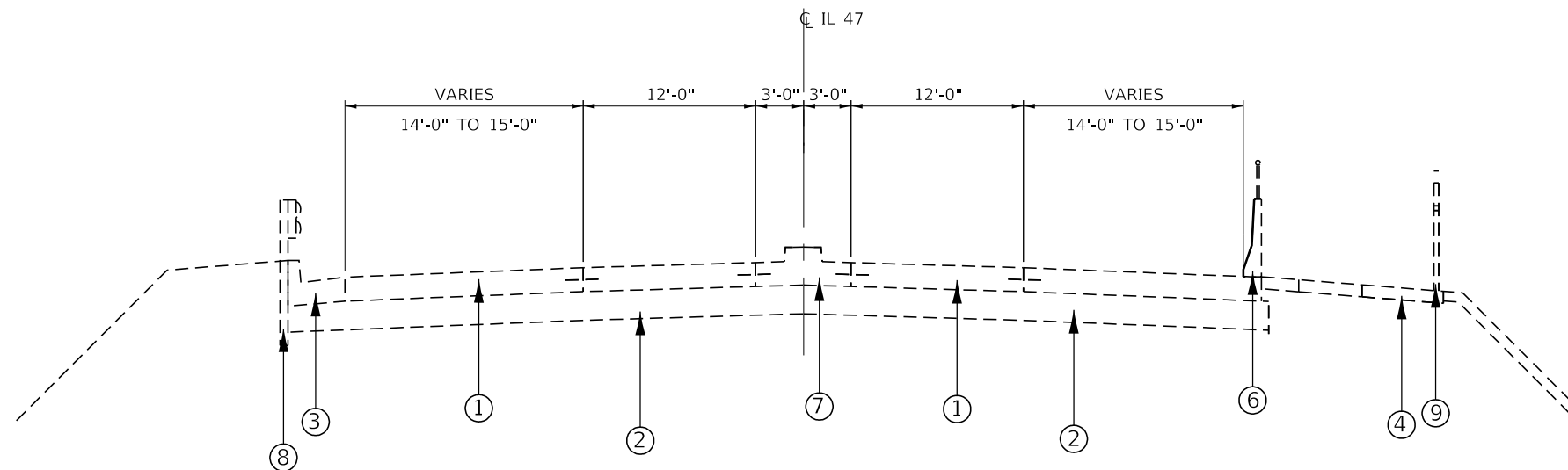
USER NAME = woodshankr	DESIGNED - RW	REVISED -
DRAWN - RW	CHECKED - EP	REVISED -
PLOT SCALE = 100.0000' / in.	DATE - 9/5/2017	REVISED -
PLOT DATE = 10/11/2017		

STATE OF ILLINOIS
DEPARTMENT OF TRANSPORTATION

SUMMARY OF QUANTITIES			
SCALE:	SHEET 1	OF 1	SHEETS STA.
			TO STA.

F.A.P. RTE.	SECTION	COUNTY	TOTAL SHEETS	SHEET NO.
326	(111BR-1)BC,BDS	GRUNDY	8	3
ILLINOIS FED. AID PROJECT			CONTRACT NO. 66H84	

REV



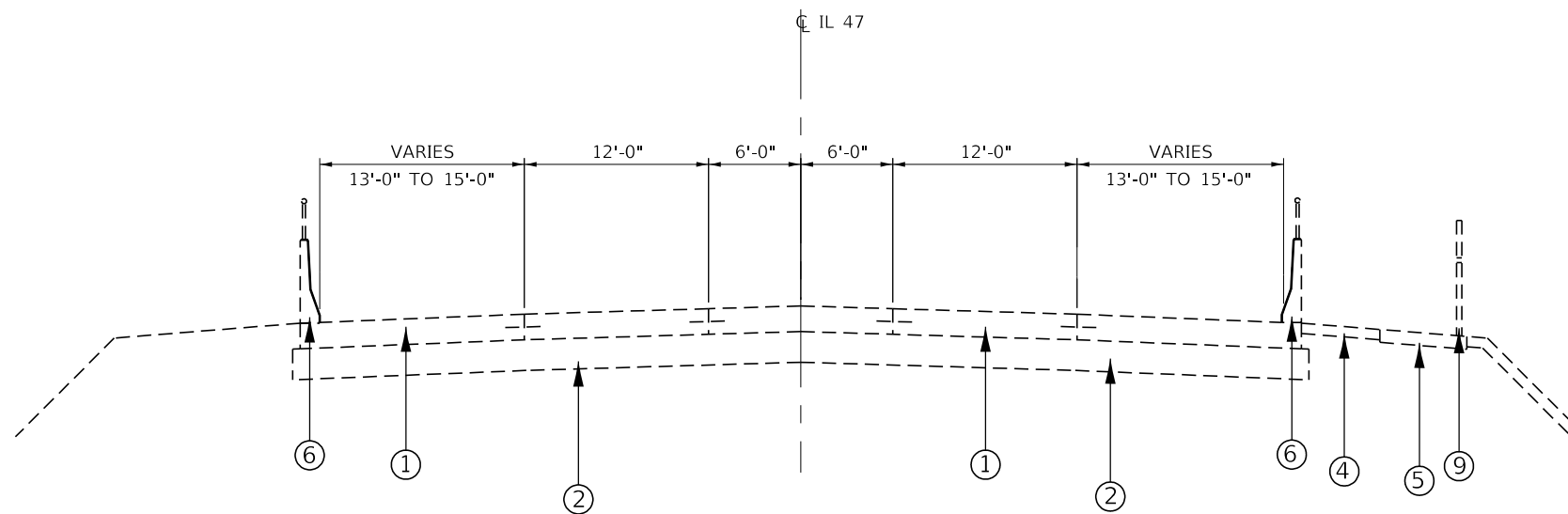
TYPICAL SECTION 1

STA. 166+24 TO STA. 166+48

* END OF S. APPROACH = STA. 166+48

LEGEND

- ① PORTLAND CEMENT CONCRETE PAVEMENT 10" (JOINTED)
- ② SUB-BASE GRANULAR MATERIAL, TYPE A 12"
- ③ COMBINATION CONCRETE CURB AND GUTTER, TYPE B-6.24
- ④ PORTLAND CEMENT CONCRETE SIDEWALK 4"
- ⑤ PORTLAND CEMENT CONCRETE SIDEWALK 8"
- ⑥ CONCRETE BARRIER
- ⑦ CONCRETE MEDIAN, TYPE SB-6.24
- ⑧ STEEL PLATE BEAM GUARDRAIL, TYPE A
- ⑨ BICYCLING RAILING



TYPICAL SECTION 2

STA. 184+38 TO STA. 185+08

**END OF N. APPROACH = STA. 184+38

CONCRETE SEALER

MODEL: Default
 FILE: \\nas0101\B84E81D1\TEC\Illinois\gov\PIV\DOT\Documents\DOT_Offices\Director_3\Projects\0366184\CADData\0366184-1b-detail.dgn

USER NAME = woodshankr	DESIGNED - RW	REVISED -
	DRAWN - RW	REVISED -
PLOT SCALE = 100.0000' / in.	CHECKED - EP	REVISED -
PLOT DATE = 10/11/2017	DATE - 9/5/2017	REVISED -

**STATE OF ILLINOIS
DEPARTMENT OF TRANSPORTATION**

TYPICAL SECTIONS	
SCALE:	SHEET 1 OF 1 SHEETS STA. TO STA.

F.A.P. RTE.	SECTION	COUNTY	TOTAL SHEETS	SHEET NO.
326	(111BR-1)BC,BDS	GRUNDY	8	4
CONTRACT NO. 66H84			ILLINOIS FED. AID PROJECT	

SCHEDULE - CONCRETE SEALER

LOCATION				CONCRETE SEALER														
				N. ABUT. SQ FT	S. ABUT. SQ FT	PIER 1 SQ FT	PIER 2 SQ FT	PIER 3 SQ FT	PIER 4 SQ FT	NB SIDEWALK SQ FT	NB PARAPET SQ FT	NB DRIVE LANE SQ FT	NB PASSING LANE SQ FT	NB MEDIAN SQ FT	SB MEDIAN SQ FT	SB PASSING LANE SQ FT	SB DRIVE LANE SQ FT	SB PARAPET SQ FT
STA.	166+24	TO	STA. 166+48															
STA.	166+78			306														
STA.	166+48	TO	STA. 178+12					11640	7682	17460	16296	1746	1746	16296	17460	4423		
STA.	169+81				257													
STA.	173+42					257												
STA.	177+45						257											
STA.	178+12	TO	STA. 179+37					1250	825	1875	1750	313	375	1750	1875	475		
STA.	179+37	TO	STA. 184+38					5010	3307	7515	9018			9018	7515	1904		
STA.	181+06								278									
STA.	184+08			306														
STA.	184+38	TO	STA. 185+08							266							266	
SUBTOTAL				306	306	257	257	257	278	17900	12147	26850	27064	2059	2121	27064	26850	7068
TOTAL				150784														

STATIONS ARE IN ENGLISH UNITS FOR REFERENCE ONLY

MODEL: Default
 FILE: \\nas101.pswill08a.eidn.itc Illinois.gov\PIWDOT\Documents\DOT Office\DI\erict 3\Projects\0366184\CADD\0366184-184-184-184-184-184-184.dgn

USER NAME = woodshankr	DESIGNED - RW	REVISED -
	DRAWN - RW	REVISED -
PLOT SCALE = 100.0000 ' / in.	CHECKED - EP	REVISED -
PLOT DATE = 10/11/2017	DATE - 9/5/2017	REVISED -

**STATE OF ILLINOIS
DEPARTMENT OF TRANSPORTATION**

SCHEDULES

SCALE: SHEET 1 OF 1 SHEETS STA. TO STA.

F.A.P. RTE.	SECTION	COUNTY	TOTAL SHEETS	SHEET NO.
326	(111BR-1)BC,BD5	GRUNDY	8	5
CONTRACT NO. 66H84			ILLINOIS FED. AID PROJECT	

3.1 m Plate Girder - Composite
In Positive Moment Regions,
Hybrid in Negative Moment Regions
(Gr. 485W (HPS) flanges, Gr. 345W web)

El. 163.029 Limiting Elevation
for Vertical Clearance

Elev. 152.800
Bottom of S.
Abutment

Elev. 147.800 Top
of Drilled Shaft
Pier 1

HEW El. 153.660
(500 yr. flood)

Elev. 146.300 Top
of Drilled Shaft
Pier 2

Stream Bed
El. 143.570

2% Flow Line -
El. 150.114

91.94 m
106.68 m Min. Horizontal Clearance

Elev. 146.300
Top of Drilled Shaft
Pier 3

Existing structure
to be removed

Elev. 149.300 Top
of Drilled Shaft
Pier 4

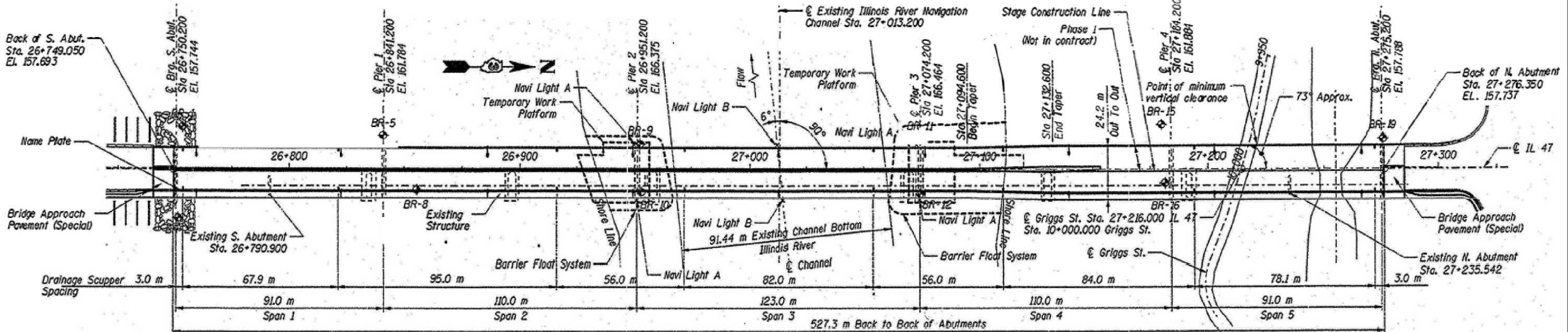
4.7 m Vertical
Clearance

Elev. 152.850
Bottom of N.
Abutment

Griggs St.
Sta. 27+216.000 IL 47

Normal Water Level
I&M Canal
Elev. 153.420

ELEVATION



GENERAL PLAN

FOR INFORMATION ONLY

MODEL: Default
FILE: \\hsl08a\B08EID\NTEC\Illinois\pov\PIV\DOT\Documents\10DOT_Offices\B12rct_3\Project\310366\H84\CADD\DATA\310366\H84-IB-C-66H84.dgn

USER NAME = woodshankr	DESIGNED - RW	REVISED -
	DRAWN - RW	REVISED -
PLOT SCALE = 100,0000' / in.	CHECKED - EP	REVISED -
PLOT DATE = 10/11/2017	DATE - 9/5/2017	REVISED -

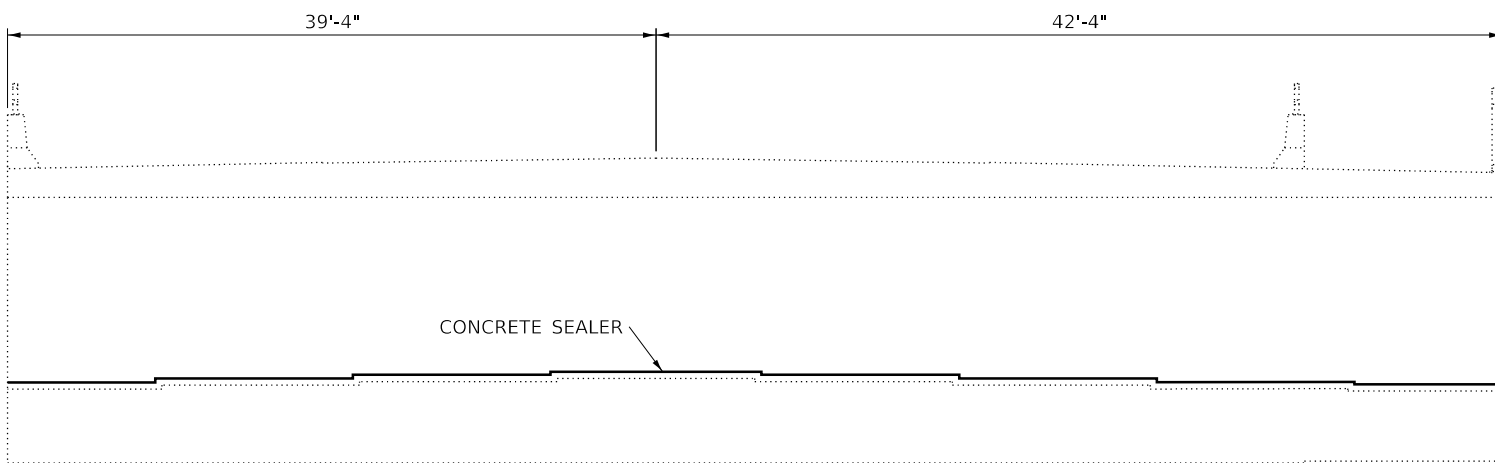
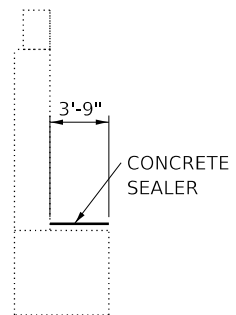
STATE OF ILLINOIS
DEPARTMENT OF TRANSPORTATION

EXISTING STRUCTURE DETAILS
(FOR INFORMATION ONLY)

SCALE: SHEET 1 OF 3 SHEETS STA. TO STA.

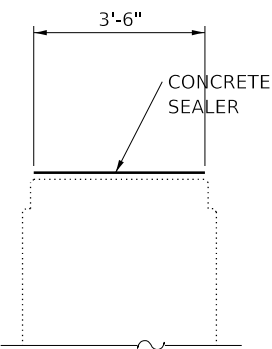
F.A.P. RTE. 326	SECTION (111BR-1)BC,BDS	COUNTY GRUNDY	TOTAL SHEETS 8	SHEET NO. 6
CONTRACT NO. 66H84				
ILLINOIS FED. AID PROJECT				

ABUT. SECTION

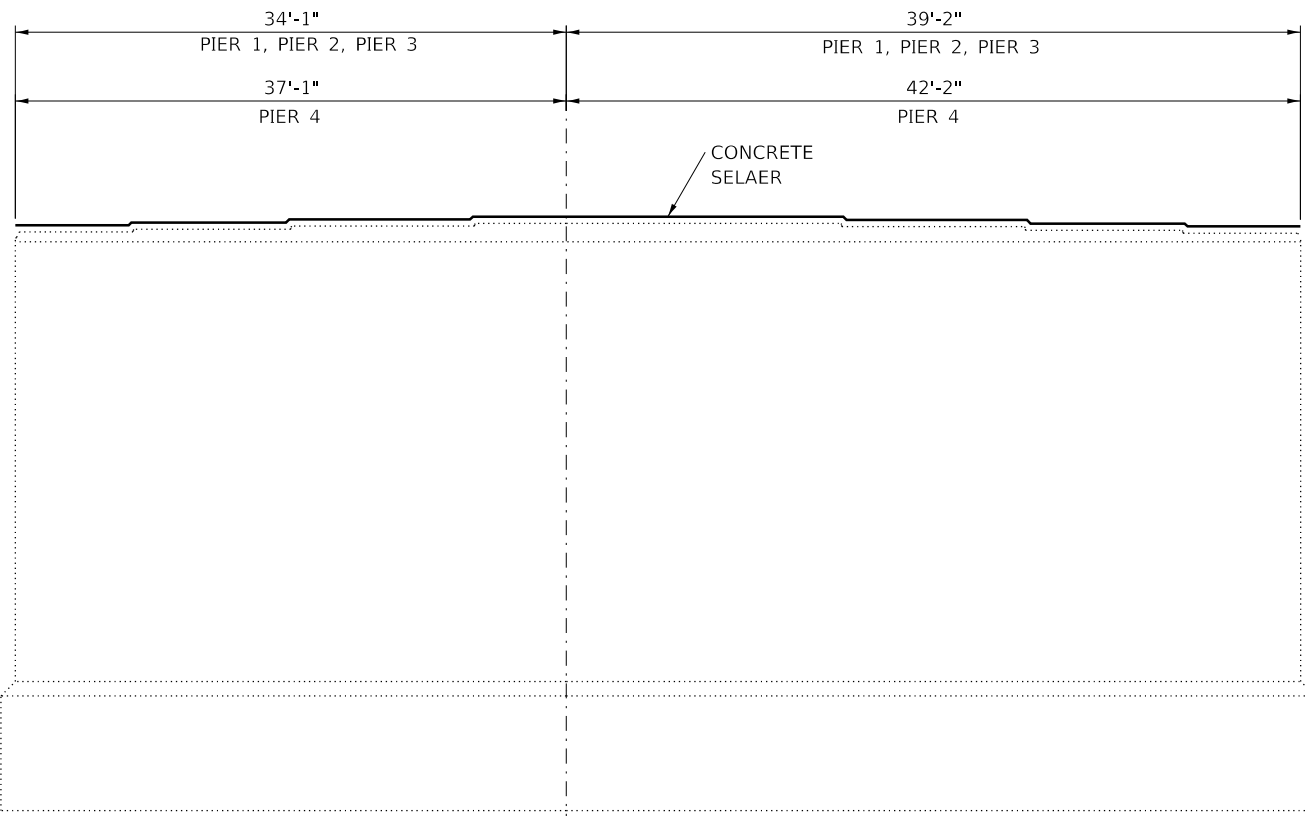


NORTH ABUTMENT

LOOKING NORTH
SOUTH ABUTMENT SIMILAR THROUGH 180°ROTATION



**ELEVATION
PIER CAP**



PIER

DIMENSIONS ARE IN ENGLISH UNITS FOR REFERENCE ONLY

MODEL: Default
FILE NAME: P:\111BR-1\BID\NTEC\Illinois.gov\RW\DOT\Documents\DOT_Offices\District 3\Projects\0366184\CADD\0366184-18-SubDetail.dgn

USER NAME = woodshankr	DESIGNED - RW	REVISED -
	DRAWN - RW	REVISED -
PLOT SCALE = 100.0000' / in.	CHECKED - EP	REVISED -
PLOT DATE = 10/11/2017	DATE - 9/5/2017	REVISED -

**STATE OF ILLINOIS
DEPARTMENT OF TRANSPORTATION**

**EXISTING STRUCTURE DETAILS
(FOR INFORMATION ONLY)**

SCALE: SHEET 3 OF 3 SHEETS STA. TO STA.

F.A.P. RTE. 326	SECTION (111BR-1)BC,BD5	COUNTY GRUNDY	TOTAL SHEETS 8	SHEET NO. 8
CONTRACT NO. 66H84			ILLINOIS FED. AID PROJECT	