

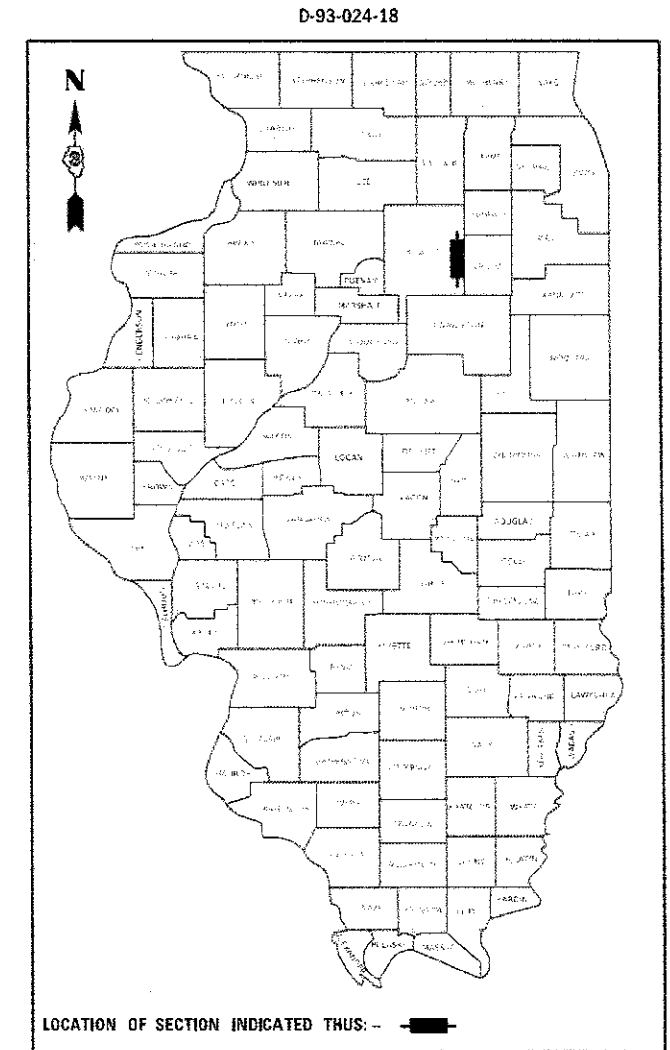
STATE OF ILLINOIS
DEPARTMENT OF TRANSPORTATION

F.A.P. ROUTE	SECTION	COUNTY	TOTAL SHEETS	SHEET NO.
786	(109BR)BC,BDS	LASALLE	13	1
CONTRACT NO. 66H85				

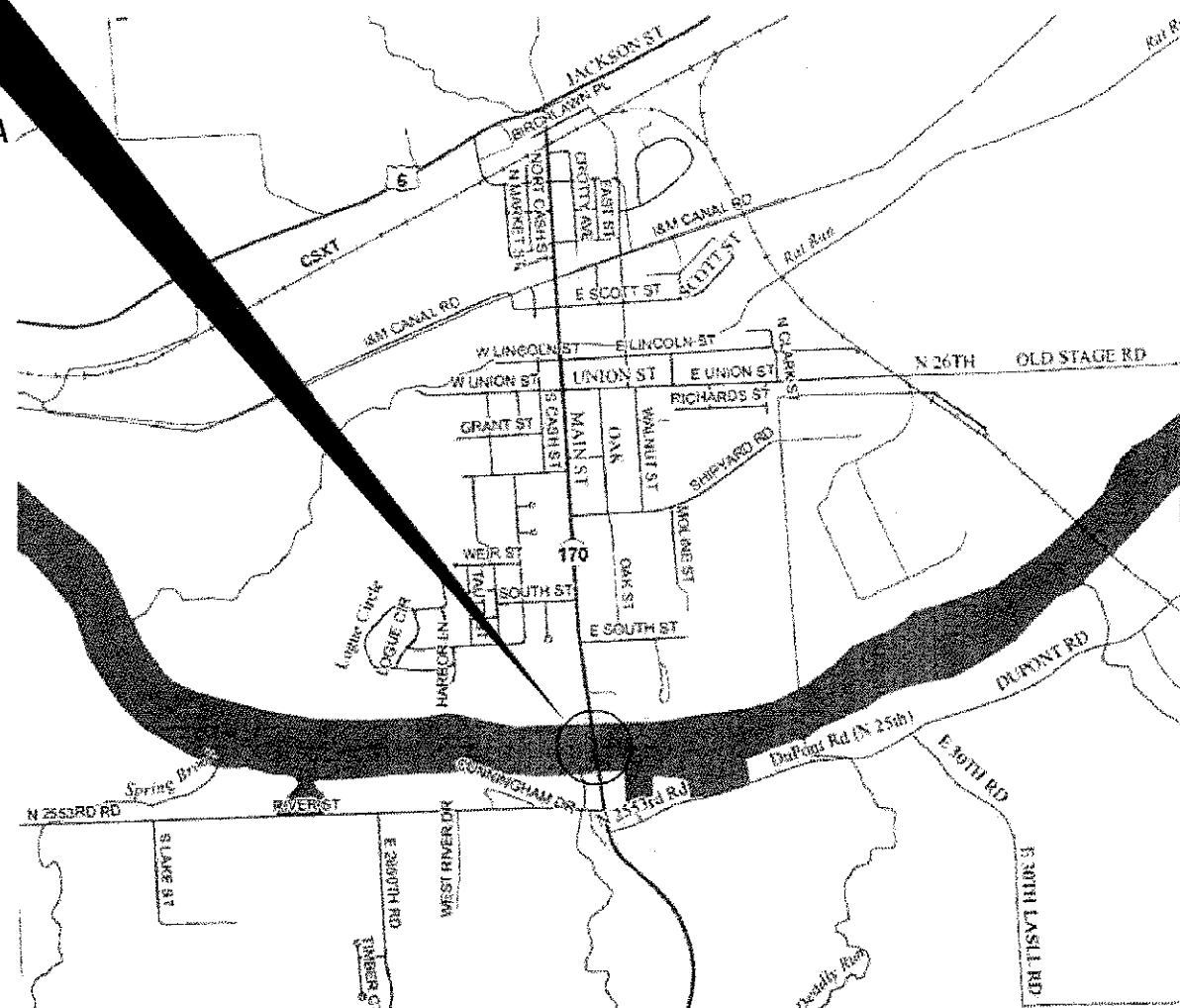
1. COVER SHEET
2. GENERAL NOTES
3. SUMMARY OF QUANTITIES
4. TYPICAL SECTIONS
5. SCHEDULES
- 6 - 13. EXISTING STRUCTURE PLANS

PROPOSED HIGHWAY PLANS

F.A.P. ROUTE 786 (IL 170)
SECTION (109BR)BC,BDS
PROJECT STP- MY6D(358)
BRIDGE WASHING AND CONCRETE SEALING
LASALLE COUNTY
C-93-022-18

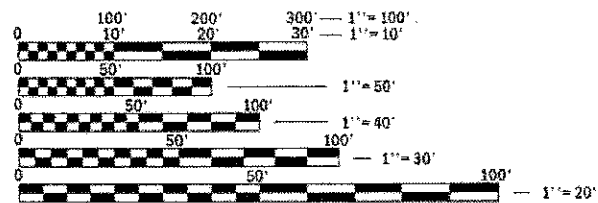


PROJECT LOCATION
STRUCTURE NO. 050-0246
CARRYING FAP 786 (IL 170) OVER
THE ILLINOIS RIVER AND RIVER RD.
APPROXIMATELY 0.49 MILES SOUTH OF US 6 IN SENECA



STANDARDS

000001-06	STANDARD SYMBOLS, ABBREVIATIONS AND PATTERNS
001006	DECIMAL OF AN INCH AND OF A FOOT
701101-05	OFF-ROAD OPERATIONS, MULTILANE, 15' (4.5 m) TO 24' (600 mm) FROM PAVEMENT EDGE
701106-02	OFF-ROAD OPERATIONS, MULTILANE, MORE THAN 15' (4.5 m) AWAY
701501-06	URBAN LANE 2L, 2W - UNDIVIDED
701801-06	SIDEWALK, CORNER OR CROSSWALK CLOSURE
701901-07	TRAFFIC CONTROL DEVICES



FULL SIZE PLANS HAVE BEEN PREPARED USING STANDARD ENGINEERING SCALES. REDUCED SIZED PLANS WILL NOT CONFORM TO STANDARD SCALES. IN MAKING MEASUREMENTS ON REDUCED PLANS, THE ABOVE SCALES MAY BE USED.

J.U.L.I.E.
JOINT UTILITY LOCATION INFORMATION FOR EXCAVATION
1-800-892-0123
OR 811

PROJECT ENGINEER: JOE KANNEL P.E.
UNIT CHIEF: RON WOODSHANK
DISTRICT NO. 3 (815) 434-6131
CONTRACT NO. 66H85

GROSS LENGTH = 1764 FT. = 0.33 MILE
NET LENGTH = 1764 FT. = 0.33 MILE

FUNCTIONAL CLASSIFICATION
RURAL MINOR ARTERIAL
F.A.P. ROUTE 786 (IL 170))
2015 ADT 6400
P.V. 89.1% S.U. 4.7% M.U. 6.2%

STATE OF ILLINOIS
DEPARTMENT OF TRANSPORTATION

SUBMITTED *Oct 17 2017*
Maudel
REGIONAL ENGINEER

NOV 30 2017
Maura M. Addis P.E.
ENGINEER OF DESIGN AND ENVIRONMENT

NOV 30 2017
Amelia [Signature]
DIRECTOR OF PROGRAM DEVELOPMENT

PRINTED BY THE AUTHORITY
OF THE STATE OF ILLINOIS

GENERAL NOTES

FOR STABILIZATION, ALL TYPE III BARRICADES WILL REQUIRE A MINIMUM OF FOUR SAND BAGS PER BARRICADE.

ANY REFERENCE TO A STANDARD IN THESE PLANS SHALL BE INTERPRETED TO MEAN THE EDITION AS INDICATED BY THE SUBNUMBER SHOWN IN THE LIST OF STANDARDS OR THE COPY INCLUDED IN THE PLANS.

COMMITMENTS

STATE OF ILLINOIS
DEPARTMENT OF TRANSPORTATION
DISTRICT THREE
AS BUILT INFORMATION

SUPERVISING CONSTRUCTION FIELD ENGINEER

RESIDENT ENGINEER / TECHNICIAN

START & END DATES
OF CONSTRUCTION:

INSPECTORS:

DATE:

PREPARED BY:

EXAMINED BY:

10/17/17
David Brorick (w)
DISTRICT STUDIES & PLANS ENGINEER
EP
DISTRICT CONSTRUCTION ENGINEER
Michael A. Sht
DISTRICT MATERIALS ENGINEER
Tom Hupmeyer
DISTRICT OPERATIONS ENGINEER

STATE OF ILLINOIS
DEPARTMENT OF TRANSPORTATION

GENERAL NOTES

USER NAME = woodsfrank	DESIGNED - RW	REVISED -
	DRAWN - RW	REVISED -
PLOT SCALE = 100.0000' / in.	CHECKED - EP	REVISED -
PLOT DATE = 10/11/2017	DATE - 9/12/2017	REVISED -

SCALE: SHEET 1 OF 1 SHEETS STA. TO STA.

F.A.P. RTE.	SECTION	COUNTY	TOTAL SHEETS	SHEET NO.
756	(109BR)SC.BDS	LASALLE	13	2
CONTRACT NO. 66H85				
ILLINOIS FED. AID PROJECT				

CONSTR. CODE
MBPM
80% FED 20% STATE
BRIDGE
0047
S.N. 050-0246

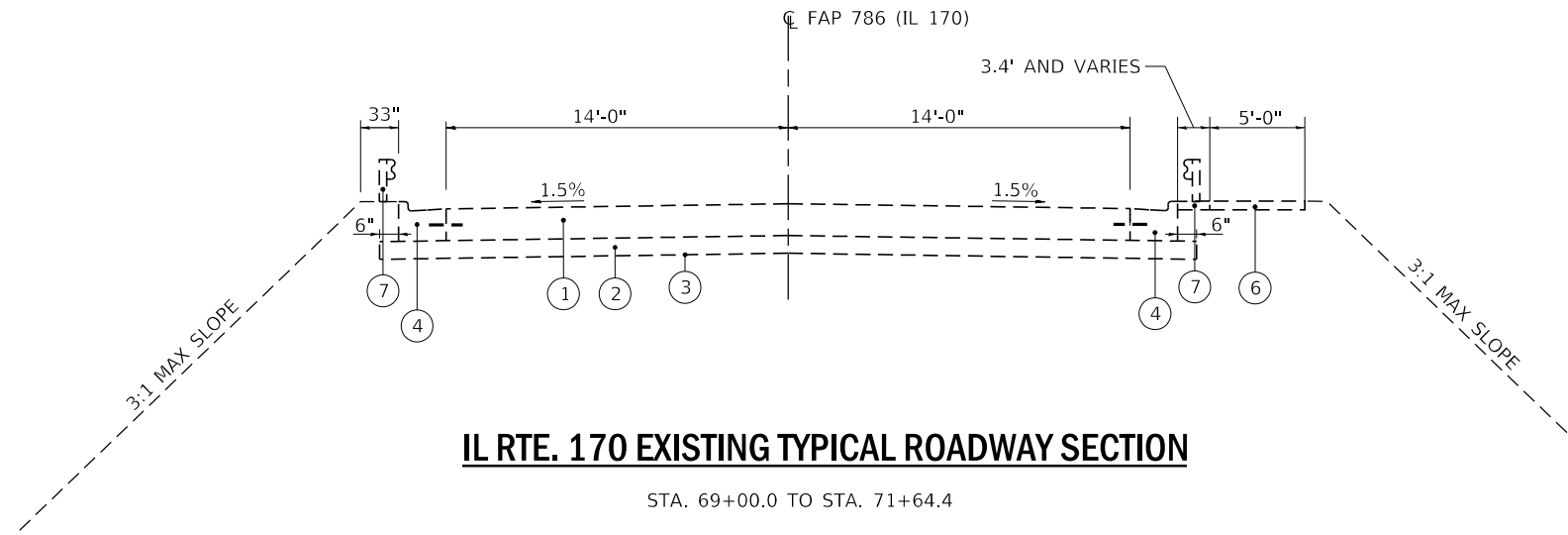
CODE NO.	ITEM	UNIT	TOTAL QUANTITY	
X5870015	BRIDGE DECK CONCRETE SEALER	SQ FT	84733	84733
59200101	BRIDGE WASHING NO. 1	EACH	1	1
67100100	MOBILIZATION	LSUM	1	1
70102620	TRAFFIC CONTROL AND PROTECTION, STANDARD 701501	LSUM	1	1
70102640	TRAFFIC CONTROL AND PROTECTION, STANDARD 701801	LSUM	1	1
Z0030850	TEMPORARY INFORMATION SIGNING	SQ FT	42	42

MODEL: Default
 FILE NAME: F:\MAIL\0848481\INTEG_ILI\GIS\GIS\DOT\Documents\DOT_Offices\Bridget_3\project\33661\B\CADD\A17561\B5-ant-detail.dgn

6

USER NAME = woodshankr	DESIGNED - RW	REVISED -	STATE OF ILLINOIS DEPARTMENT OF TRANSPORTATION	SUMMARY OF QUANTITIES	F.A.P. RTE.	SECTION	COUNTY	TOTAL SHEETS	SHEET NO.
DRAWN - RW	REVISED -	786			(109BR)BC,BDS	LASALLE	13	3	
PLOT SCALE = 100.0000' / in.	CHECKED - EP	REVISED -			CONTRACT NO. 66H85				
PLOT DATE = 10/11/2017	DATE - 9/12/2017	REVISED -			SCALE:	SHEET 1 OF 1 SHEETS STA. TO STA.	ILLINOIS FED. AID PROJECT		

REV

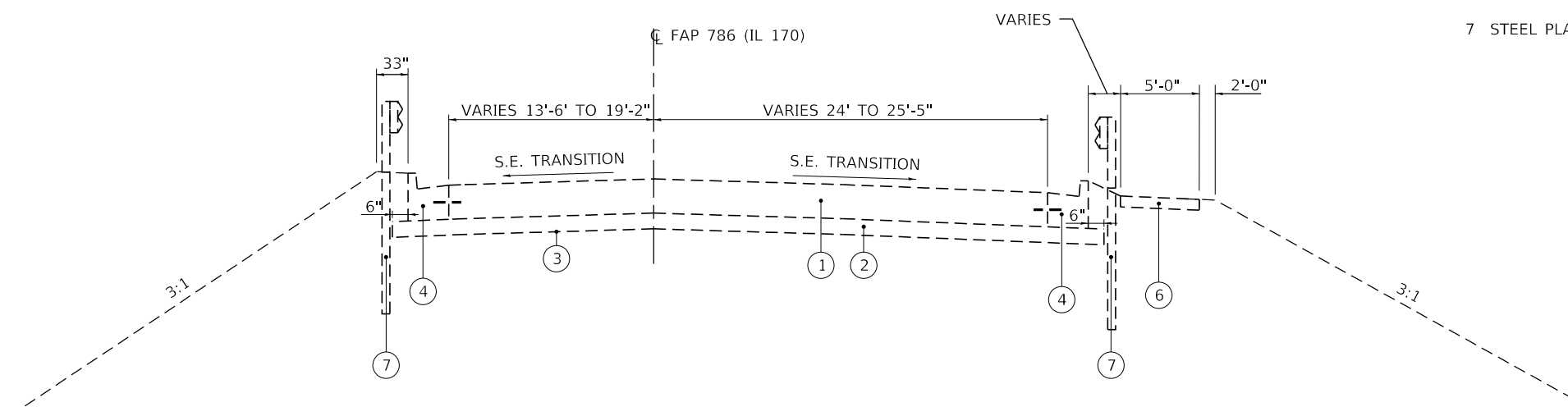


IL RTE. 170 EXISTING TYPICAL ROADWAY SECTION

STA. 69+00.0 TO STA. 71+64.4

LEGEND

- 1 PORTLAND CEMENT CONCRETE PAVEMENT, 9.5"
- 2 SUB-BASE GRANULAR MATERIAL, TYPE A 12"
- 3 GEOTECHNICAL FABRIC FOR GROUND STABILIZATION
- 4 COMBINATION CONCRETE CURB AND GUTTER, TYPE B-6.24
- 5 INCIDENTAL HOT-MIX ASPHALT SURFACING, 6"
- 6 PORTLAND CEMENT CONCRETE SIDEWALK, 4"
- 7 STEEL PLATE BEAM GUARDRAIL, TYPE A



IL RTE. 170 EXISTING TYPICAL ROADWAY SECTION

STA. 89+26.7 TO STA. 89+94.0

MODEL: Default
 FILE: \\nas01c.pva\ill08a\BID\NTEC\Illinois.gov\PI\DOT\Documents\DOT_Offices\Director\3\Projects\0366185\CADD\0366185-rib-detail.dgn

USER NAME = woodshankr	DESIGNED - RW	REVISED -
	DRAWN - RW	REVISED -
PLOT SCALE = 100.0000' / in.	CHECKED - EP	REVISED -
PLOT DATE = 10/11/2017	DATE - 9/12/2017	REVISED -

**STATE OF ILLINOIS
DEPARTMENT OF TRANSPORTATION**

TYPICAL SECTIONS

SCALE: SHEET 1 OF 1 SHEETS STA. TO STA.

F.A.P. RTE.	SECTION	COUNTY	TOTAL SHEETS	SHEET NO.
786	(109BR)BC,BDS	LASALLE	13	4
CONTRACT NO. 66H85			ILLINOIS FED. AID PROJECT	

SCHEDULE - CONCRETE SEALER

LOCATION					CONCRETE SEALER																		
					N. ABUT.	S. ABUT.	PIER 1	PIER 2	PIER 3	PIER 4	PIER 5	PIER 6	PIER 7	PIER 8	PIER 9	NB PARAPET	NB SHOULDER	NB LANE	CENTER LANE	SB LANE	SB SHOULDER	SB PARAPET	SB SIDEWALK
STA.	TO	STA.	TO	STA.	SQ FT	SQ FT	SQ FT	SQ FT	SQ FT	SQ FT	SQ FT	SQ FT	SQ FT	SQ FT	SQ FT	SQ FT	SQ FT	SQ FT	SQ FT	SQ FT			
71+63.83		71+93.83											90	90	360		360	90	174	171			
71+93.83					108																		
71+93.83	TO	74+36.83											729	729	2916		2916	729	1409	1385			
73+16.83						133																	
74+36.83							241																
74+36.83	TO	83+72.00											2806	2806	11222		11222	2806	5424	5330			
77+19.42								133															
80+89.42									133														
83+72.00										241													
83+72.00	TO	87+32.00											1080	1080	4320	2160	4320	1080	2088	2052			
84+78.00													133										
86+26.00																							
87+32.00																							
87+32.00	TO	88+97.42																					
88+09.75																							
88+97.42																							
88+97.42	TO	89+27.42																					
SUBTOTAL					108	142	133	241	133	133	241	133	133	241	133	5290	5290	21158	4500	21158	5290	10226	10050
TOTAL					84733																		

MODEL: Default
FILE: \\nas101\pub\B&E\BIDD\ITEC\Illinois\gov\PI\DOT\Documents\DOT_Offices\Director\3\Projects\0366\85\CADD\0366\85-sh-sealer.dgn

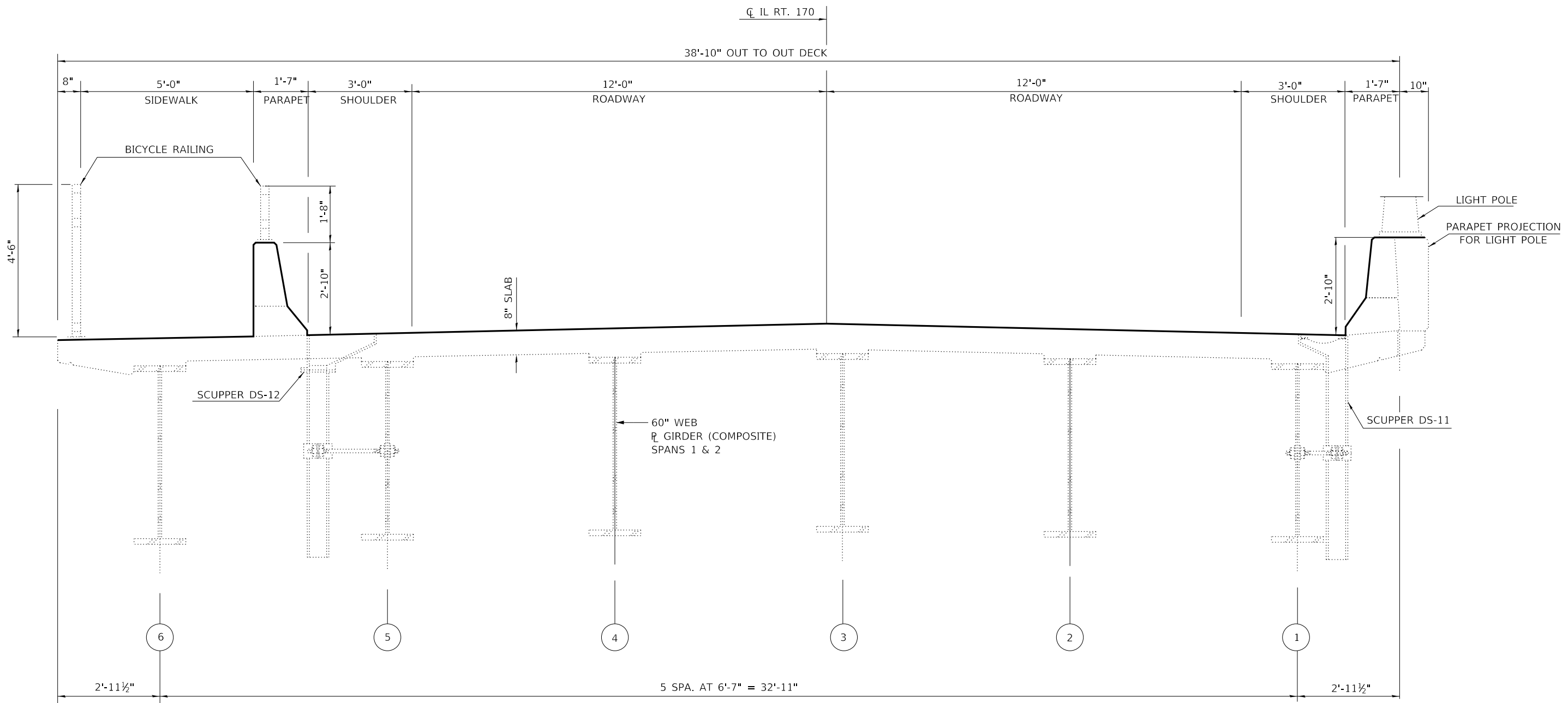
USER NAME = woodshankr	DESIGNED - RW	REVISED -
	DRAWN - RW	REVISED -
PLOT SCALE = 100.0000' / in.	CHECKED - EP	REVISED -
PLOT DATE = 10/11/2017	DATE - 9/12/2017	REVISED -

STATE OF ILLINOIS
DEPARTMENT OF TRANSPORTATION

SCHEDULE

SCALE: SHEET 1 OF 1 SHEETS STA. TO STA.

F.A.P. RTE.	SECTION	COUNTY	TOTAL SHEETS	SHEET NO.
786	(109BR)BC,BDS	LASALLE	13	5
CONTRACT NO. 66H85			ILLINOIS FED. AID PROJECT	



CROSS-SECTION (UNIT 1)

LOOKING NORTH
 STA. 71+63.83 TO STA. 71+93.83 (BK. N. ABUT.)
 STA. 71+93.83 TO 74+36.83
 (OUTSIDE END OF APPROACH TO PIER #2)

MODEL: Default
 FILE: \\nas0101\B84E8D1D\TEC\Illinois\gov\PIV\DOT\Documents\1\DOT_Offices\District 3\Projects\03366185\CADD\03366185-1ht-detail.dgn

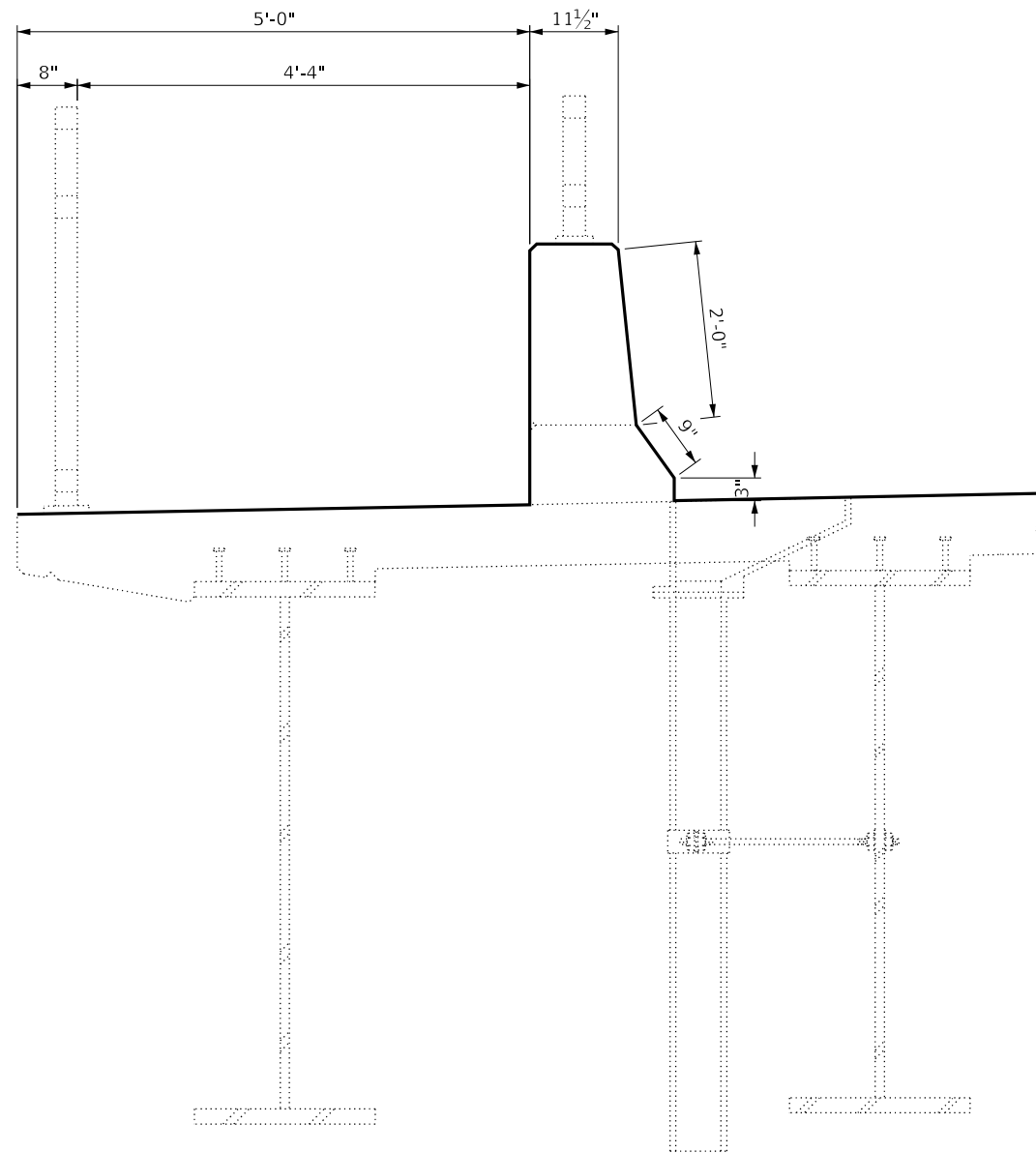
USER NAME = woodshankr	DESIGNED - RW	REVISED -
	DRAWN - RW	REVISED -
PLOT SCALE = 100.0000' / in.	CHECKED - EP	REVISED -
PLOT DATE = 10/11/2017	DATE - 9/12/2017	REVISED -

**STATE OF ILLINOIS
 DEPARTMENT OF TRANSPORTATION**

**EXISTING STRUCTURE PLANS
 FOR INFORMATION ONLY**

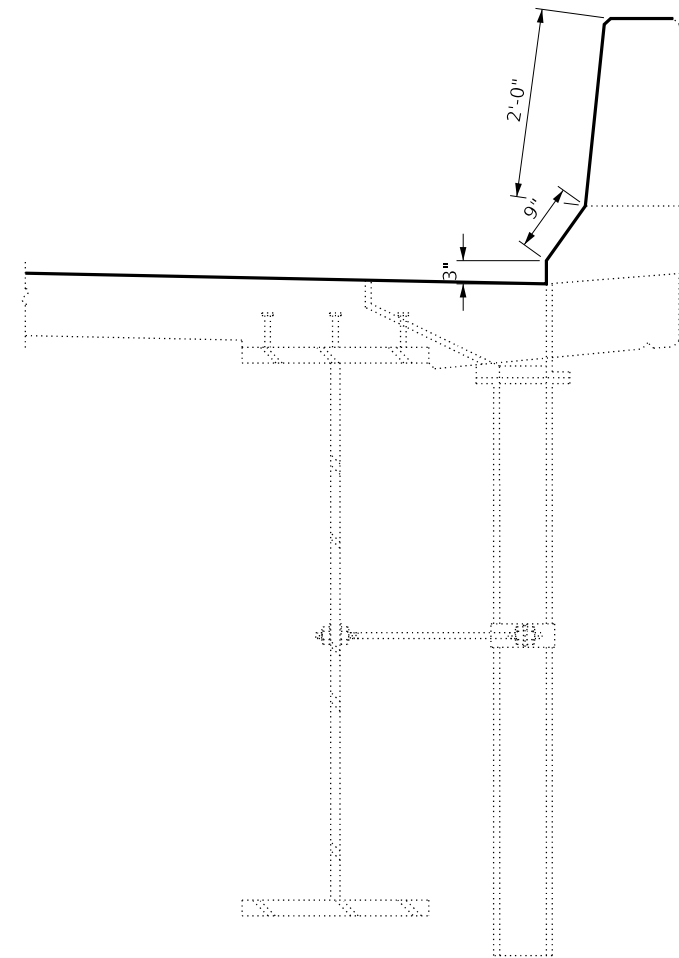
SCALE: SHEET 2 OF 8 SHEETS STA. TO STA.

F.A.P. RTE.	SECTION	COUNTY	TOTAL SHEETS	SHEET NO.
786	(109BR)BC,BDS	LASALLE	13	7
CONTRACT NO. 66H85				
ILLINOIS FED. AID PROJECT				



SECTION THRU WEST PARAPET

LOOKING NORTH



SECTION THRU EAST PARAPET

LOOKING NORTH

————— CONCRETE SEALER

MODEL: Default
 FILE NAME: P:\1109BR\BID\NTEC\Illinois.gov\FWIDOT\Documents\DOT_Offices\District 3\Projects\0366H85\CADD\0366H85-1109BR-1109BR.dgn

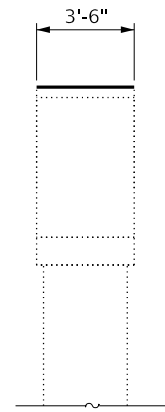
USER NAME = woodshankr	DESIGNED - RW	REVISED -
	DRAWN - RW	REVISED -
PLOT SCALE = 100.0000' / in.	CHECKED - EP	REVISED -
PLOT DATE = 10/11/2017	DATE - 9/12/2017	REVISED -

**STATE OF ILLINOIS
DEPARTMENT OF TRANSPORTATION**

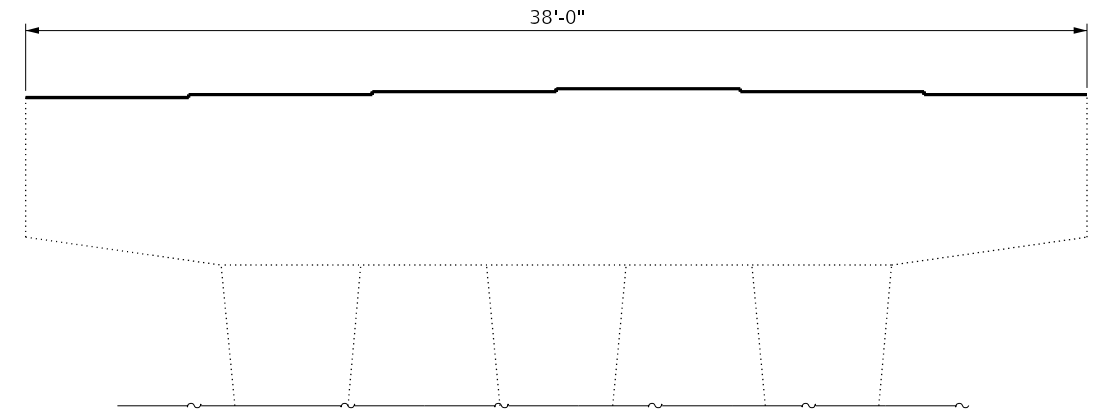
**EXISTING STRUCTURE PLANS
FOR INFORMATION ONLY**

SCALE: SHEET 6 OF 8 SHEETS STA. TO STA.

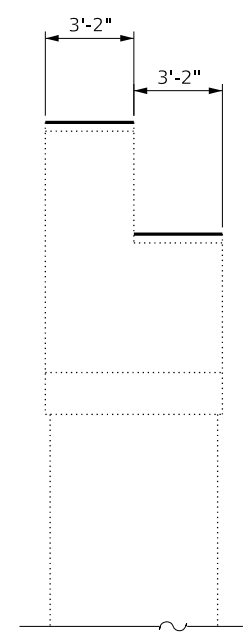
F.A.P. RTE.	SECTION	COUNTY	TOTAL SHEETS	SHEET NO.
786	(109BR)BC,BDS	LASALLE	13	11
ILLINOIS FED. AID PROJECT			CONTRACT NO. 66H85	



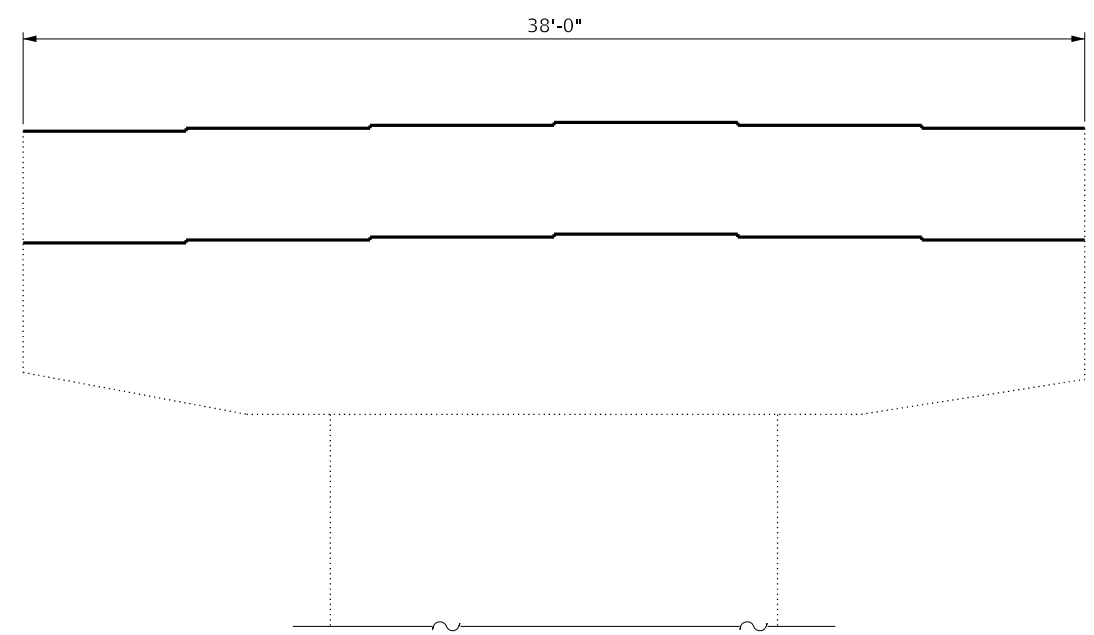
ELEVATION



PIERS 1, 3, 4, 6, 7, 9



ELEVATION



PIERS 2, 5, 8

————— CONCRETE SEALER

MODEL: Default
FILE: \\nas01c.pva\ill08\BID\NTEC\Illinois\gov\PI\DOT\Documents\DOT_Offices\Director\3\Projects\0366\85\CADD\0366\85-shr-detail.dgn

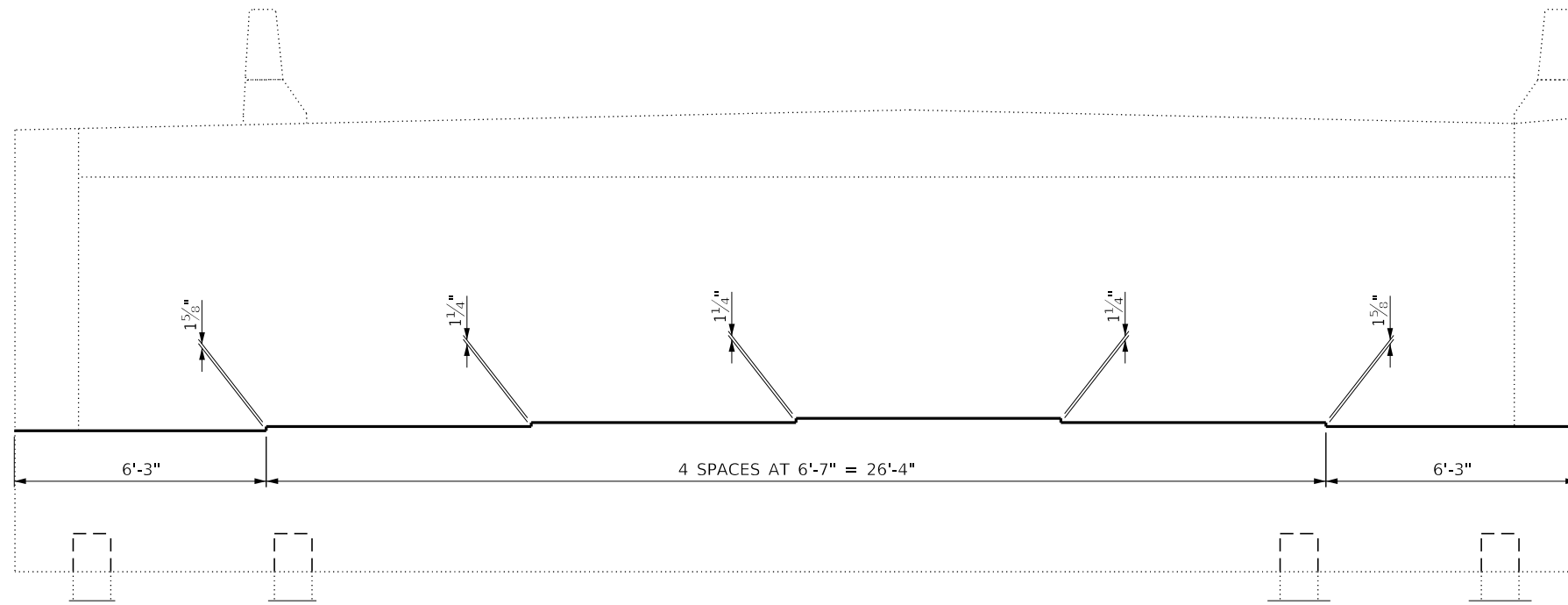
USER NAME = woodshankr	DESIGNED - RW	REVISED -
	DRAWN - RW	REVISED -
PLOT SCALE = 100.0000' / in.	CHECKED - EP	REVISED -
PLOT DATE = 10/11/2017	DATE - 9/12/2017	REVISED -

**STATE OF ILLINOIS
DEPARTMENT OF TRANSPORTATION**

**EXISTING STRUCTURE PLANS
FOR INFORMATION ONLY**

SCALE: SHEET 7 OF 8 SHEETS STA. TO STA.

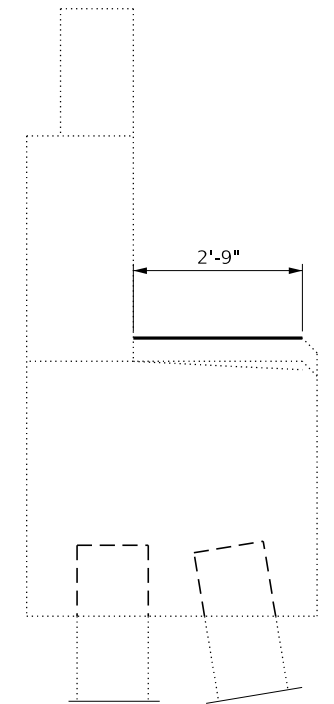
F.A.P. RTE.	SECTION	COUNTY	TOTAL SHEETS	SHEET NO.
786	(109BR)BC,BDS	LASALLE	13	12
			CONTRACT NO. 66H85	
		ILLINOIS FED. AID PROJECT		



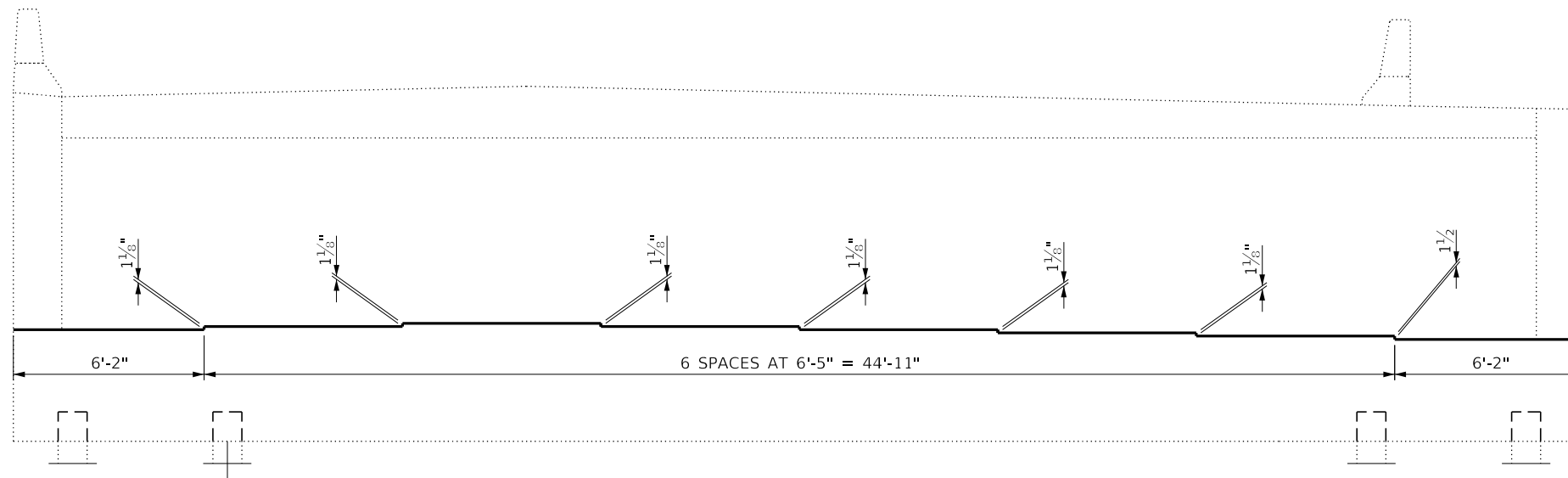
NORTH ABUTMENT ELEVATION

LOOKING NORTH

————— CONCRETE SEALER

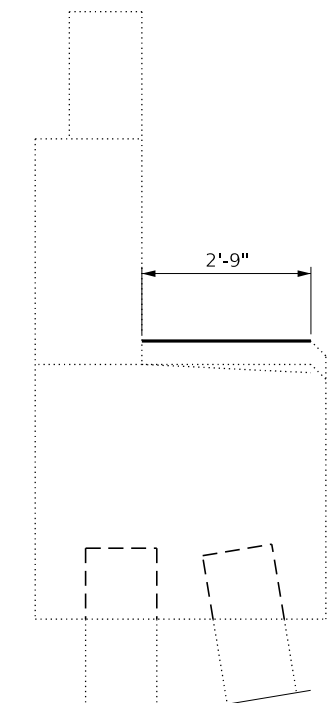


SEC. THRU ABUT.



SOUTH ABUTMENT ELEVATION

LOOKING SOUTH



SEC. THRU ABUT.

MODEL: Default
 FILE: \\nas0101\B84E81D1\TEC\Illinois\gov\PI\DOT\Documents\1\DOT - Offices\District 3\Projects\0366185\CADD\0366185-18t-detail.dgn

USER NAME = woodshankr	DESIGNED - RW	REVISED -
	DRAWN - RW	REVISED -
PLOT SCALE = 100.0000' / in.	CHECKED - EP	REVISED -
PLOT DATE = 10/11/2017	DATE - 9/12/2017	REVISED -

**STATE OF ILLINOIS
DEPARTMENT OF TRANSPORTATION**

**EXISTING STRUCTURE PLANS
FOR INFORMATION ONLY**

SCALE: SHEET 8 OF 8 SHEETS STA. TO STA.

F.A.P. RTE.	SECTION	COUNTY	TOTAL SHEETS	SHEET NO.
786	(109BR)BC,BDS	LASALLE	13	13
CONTRACT NO. 66H85				
ILLINOIS FED. AID PROJECT				