

STATE OF ILLINOIS  
DEPARTMENT OF TRANSPORTATION

F.A.P. RTE	SECTION	COUNTY	TOTAL SHEETS	NO.
619	70BR)BC,BDS	LASALLE	12	1
			CONTRACT NO. 66H89	

1. COVER SHEET
2. GENERAL NOTES
3. SUMMARY OF QUANTITIES
4. TYPICAL SECTIONS
5. SCHEDULES
- 6 - 12. EXISTING STRUCTURE DETAILS

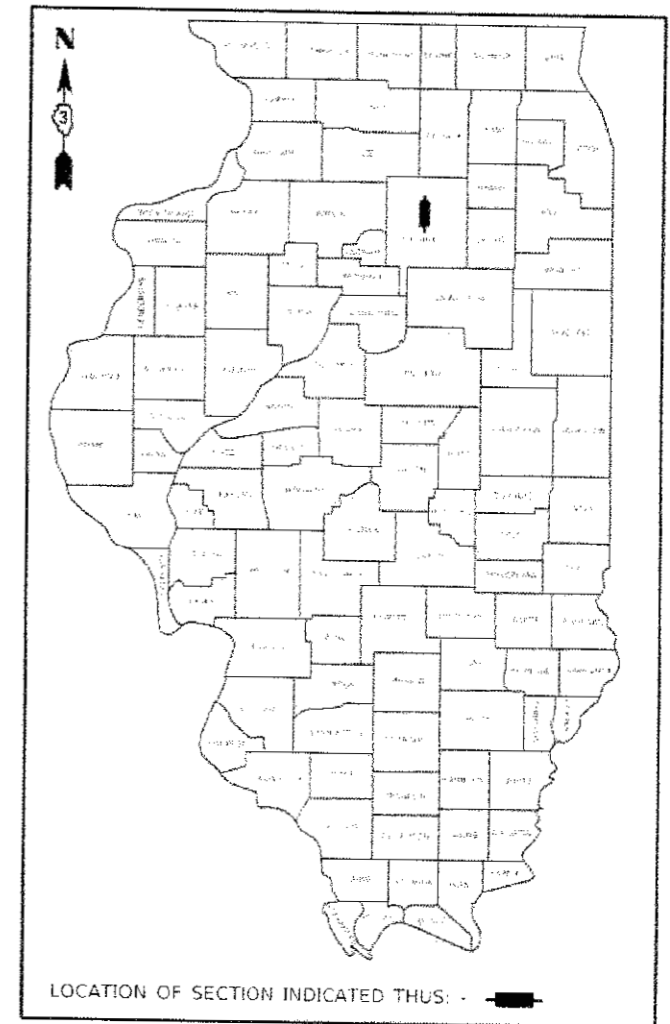
STANDARDS

000001-06	STANDARD SYMBOLS, ABBREVIATIONS AND PATTERNS
001006	DECIMAL OF AN INCH AND OF A FOOT
701101-05	OFF-ROAD OPERATIONS, MULTILANE, 15' (4.5 m) TO 24' (600 mm) FROM PAVEMENT EDGE
701106-02	OFF-ROAD OPERATIONS, MULTILANE, MORE THAN 15' (4.5 m) AWAY
701501-06	URBAN LANE CLOSURE, 2L, 2W-UNDIVIDED
701901-07	TRAFFIC CONTROL DEVICES

# PROPOSED HIGHWAY PLANS

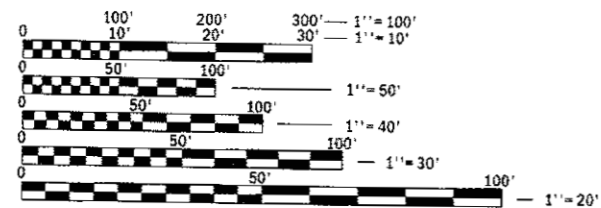
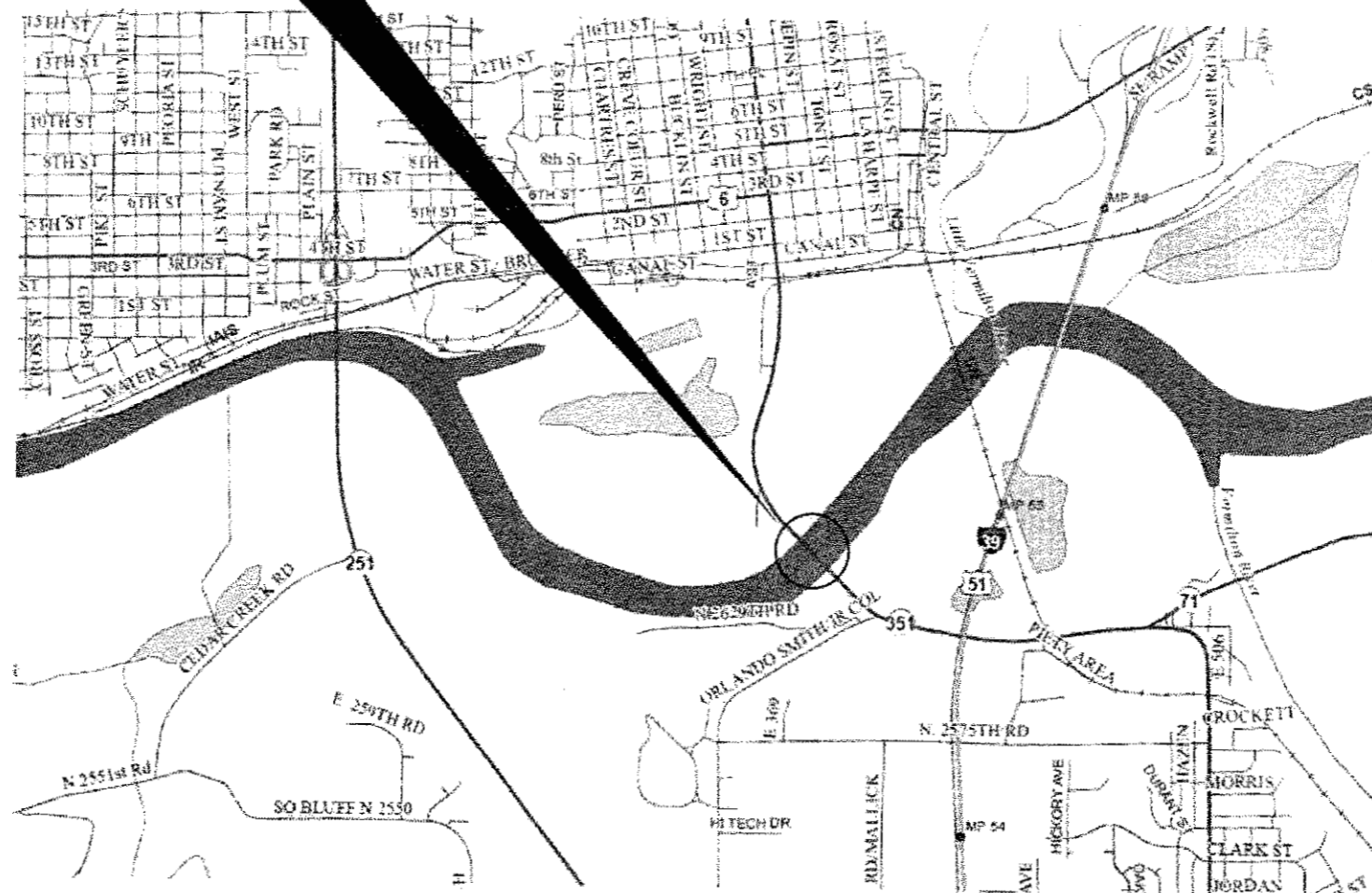
F.A.P. ROUTE 619 (IL 351)  
SECTION (70BR)BC,BDS  
PROJECT NHPP-MJMA(782)  
BRIDGE WASHING AND CONCRETE SEALING  
LASALLE COUNTY

D-93-028-18



PROJECT LOCATION  
STRUCTURE NO. 050-0237  
CARRYING FAP 619 (IL 351) OVER  
THE ILLINOIS RIVER  
1.2 MILES SOUTH OF US 6 IN LASALLE

C-93-026-18



FULL SIZE PLANS HAVE BEEN PREPARED USING STANDARD ENGINEERING SCALES. REDUCED SIZED PLANS WILL NOT CONFORM TO STANDARD SCALES. IN MAKING MEASUREMENTS ON REDUCED PLANS, THE ABOVE SCALES MAY BE USED.

J.U.L.I.E.  
JOINT UTILITY LOCATION INFORMATION FOR EXCAVATION  
1-800-892-0123  
OR 811

PROJECT ENGINEER: JOE KANNEL P.E.  
UNIT CHIEF: RON WOODSHANK  
DISTRICT 3 NO. (815) 434-6131  
CONTRACT NO. 66H89

GROSS LENGTH = 1774.35 FT. = 0.336 MILE  
NET LENGTH = 1774.35 FT. = 0.336 MILE

FUNCTIONAL CLASSIFICATION

RURAL MINOR ARTERIAL

F.A.P. ROUTE 619 (IL 351)

2015 ADT 5750

P.V. 95.1% S.U. 3.5% M.U. 1.4%

STATE OF ILLINOIS  
DEPARTMENT OF TRANSPORTATION

SUBMITTED Oct 17 2017 Mauch  
REGIONAL ENGINEER

Nov 30 2017 Maureen M. Addis  
ENGINEER OF DESIGN AND ENVIRONMENT

Nov 30 2017 Amelia  
DIRECTOR OF PROGRAM DEVELOPMENT

PRINTED BY THE AUTHORITY  
OF THE STATE OF ILLINOIS

**GENERAL NOTES**

FOR STABILIZATION, ALL TYPE III BARRICADES WILL REQUIRE A MINIMUM OF FOUR SAND BAGS PER BARRICADE.

ANY REFERENCE TO A STANDARD IN THESE PLANS SHALL BE INTERPRETED TO MEAN THE EDITION AS INDICATED BY THE SUBNUMBER SHOWN IN THE LIST OF STANDARDS OR A COPY INCLUDED IN THESE PLANS.

**COMMITMENTS**

STATE OF ILLINOIS  
DEPARTMENT OF TRANSPORTATION  
DISTRICT THREE  
AS BUILT INFORMATION

\_\_\_\_\_  
SUPERVISING CONSTRUCTION FIELD ENGINEER

\_\_\_\_\_  
RESIDENT ENGINEER / TECHNICIAN

START & END DATES  
OF CONSTRUCTION:

INSPECTORS:

STATE OF ILLINOIS  
DEPARTMENT OF TRANSPORTATION  
DISTRICT THREE

REVIEWED BY:

*David Brorick*  
DISTRICT STUDIES & PLANS ENGINEER

DATE:

*10/17/17*

EXAMINED BY:

*[Signature]*  
DISTRICT CONSTRUCTION ENGINEER

*Michael A. Short*  
DISTRICT MATERIALS ENGINEER

*[Signature]*  
DISTRICT OPERATIONS ENGINEER

STATE OF ILLINOIS  
DEPARTMENT OF TRANSPORTATION

GENERAL NOTES

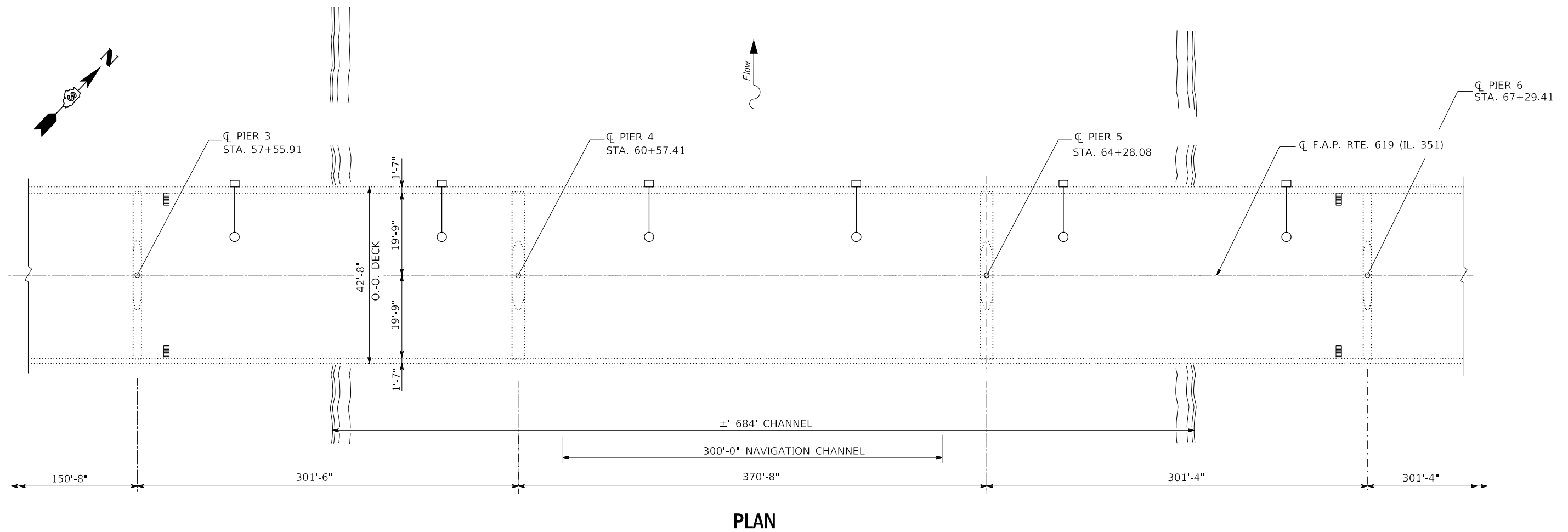
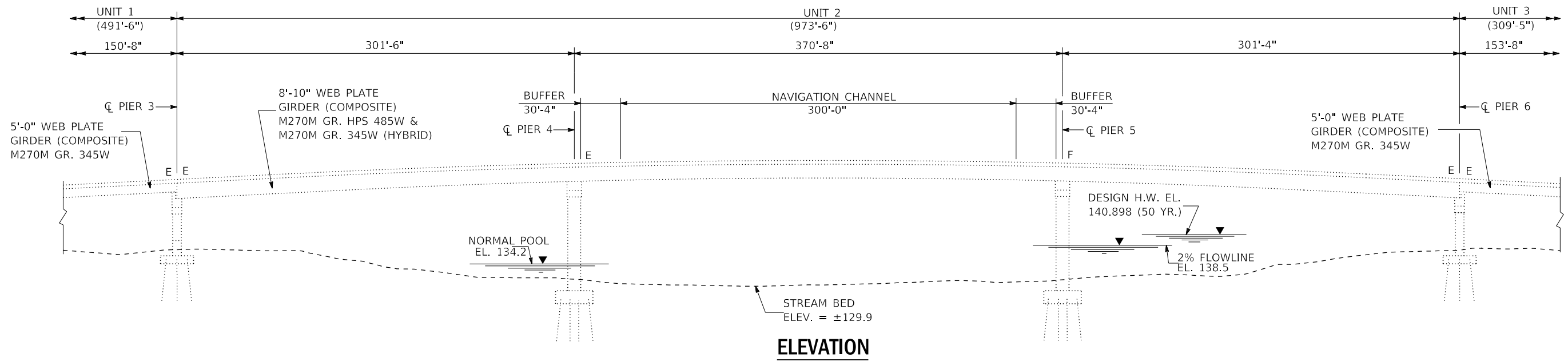
FILE NAME :	USER NAME :	DESIGNED -	REVISED -	STATE OF ILLINOIS DEPARTMENT OF TRANSPORTATION	GENERAL NOTES	F.A.P.	SECTION	COUNTY	TOTAL SHEETS	SHEET NO.	
pw111084661C:\NTFS\Illinois.gov\PK1001\00	umohs\1001	Office\District 3\Projects\036	DATA\0366\036			RTS	619	0706RBC.BDS	LASALLE	12	2
Default		PLT SCALE :	CHECKED -			REVISED -	SCALE:	SHEET 1 OF 1 SHEETS		STA.	TO STA.
		PLT DATE :	DATE -			REVISED -	CONTRACT NO. 66H89				











FILE NAME =	USER NAME = woodshankr1	DESIGNED - RW	REVISED -
pw:\IL\084EBIDINTEG.illinois.gov\PWIDOT\Documents\IDOT Offices\District 3\Projects\0366\B366\B366\Details.dgn		CHECKED - EP	REVISED -
Default	PLOT DATE = 10/12/2017	DATE - 9/8/17	REVISED -

**STATE OF ILLINOIS  
DEPARTMENT OF TRANSPORTATION**

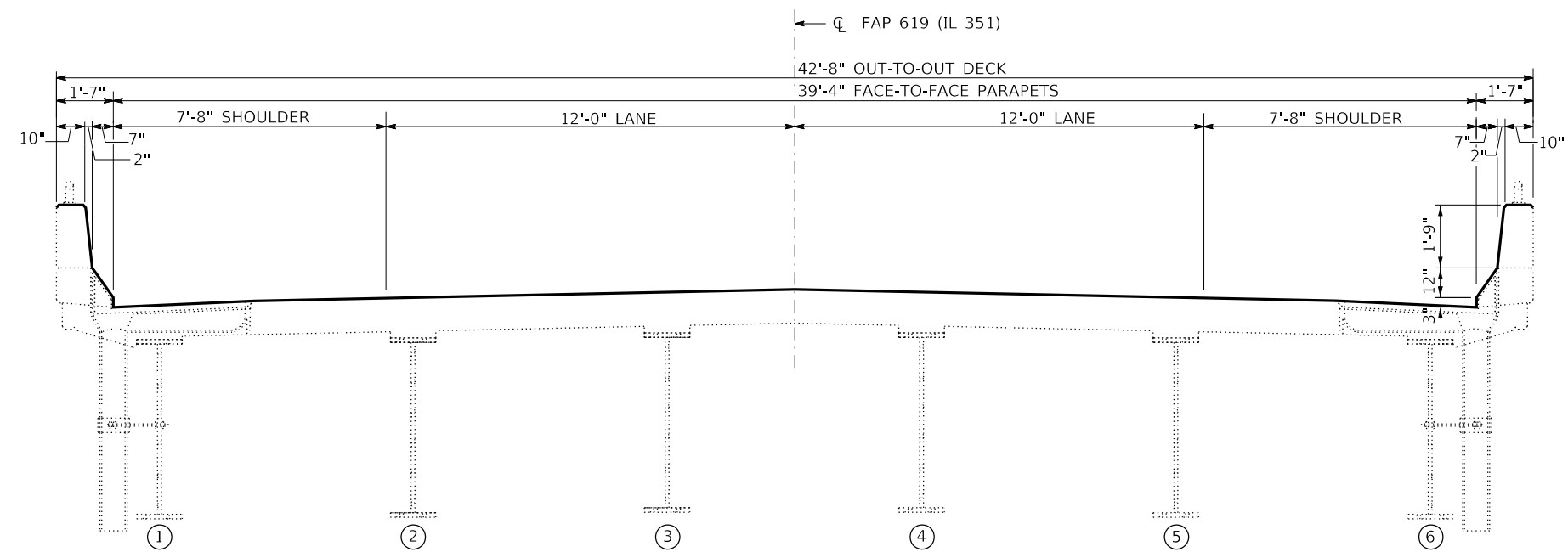
**EXISTING STRUCTURE PLANS  
GENERAL PLAN AND ELEVATION**

SCALE: SHEET 2 OF 7 SHEETS STA. 57+55.91 TO STA. 67+27.41

F.A.P. RTE.	SECTION	COUNTY	TOTAL SHEETS	SHEET NO.
619	(70BR)BC,BDS	LASALLE	12	7
			CONTRACT NO. 66H89	
		ILLINOIS	FED. AID PROJECT	







**TYPICAL CROSS SECTION**

STA. 52+64.40 TO STA. 70+38.75

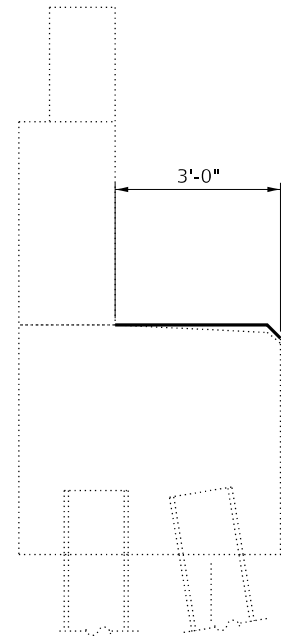
FILE NAME =	USER NAME = woodshankr1	DESIGNED - RW	REVISED -
pw:\IL\084EBIDINTEG.illinois.gov\PWIDOT\Documents\DOT Offices\District 3\Projects\0366\B366\B366.dgn		CHECKED - EP	REVISED -
Default	PLOT DATE = 10/12/2017	DATE - 9/8/17	REVISED -

**STATE OF ILLINOIS  
DEPARTMENT OF TRANSPORTATION**

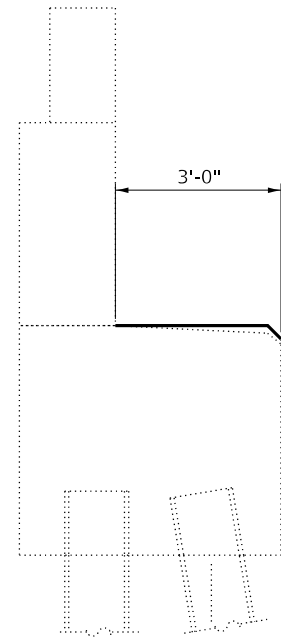
**EXISTING STRUCTURE PLANS  
DECK CROSS SECTION**

SCALE: SHEET 4 OF 7 SHEETS STA. TO STA.

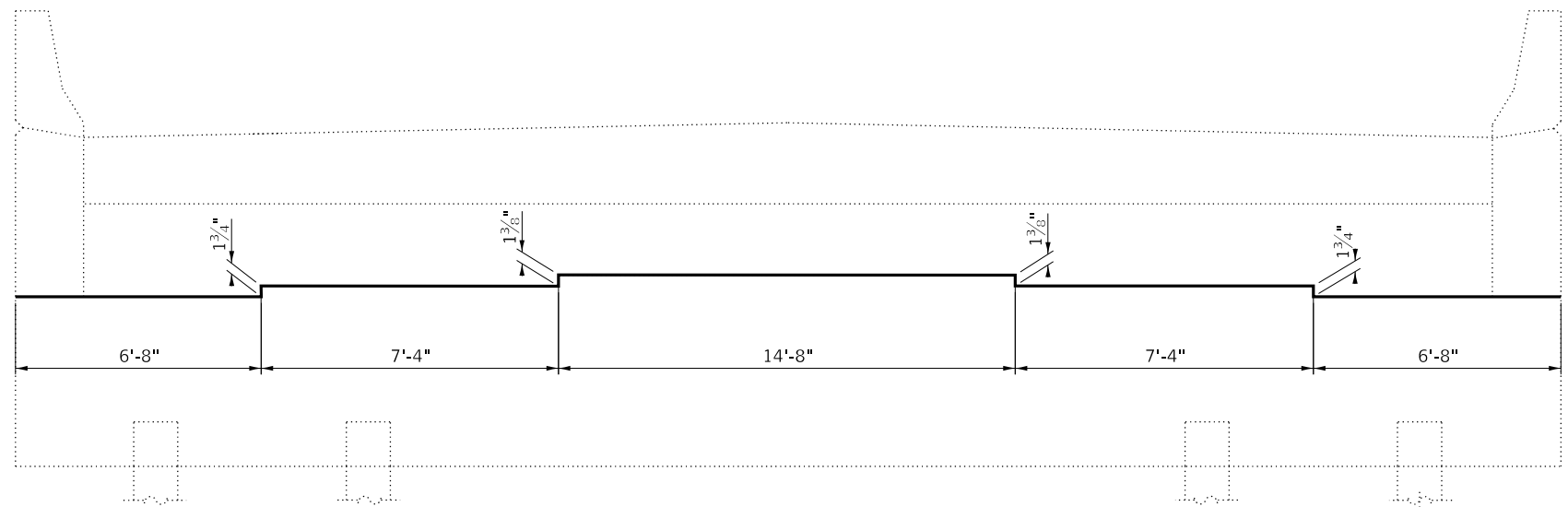
F.A.P. RTE.	SECTION	COUNTY	TOTAL SHEETS	SHEET NO.
619	(70BR)BC,BDS	LASALLE	12	9
			CONTRACT NO. 66H89	
		ILLINOIS FED. AID PROJECT		



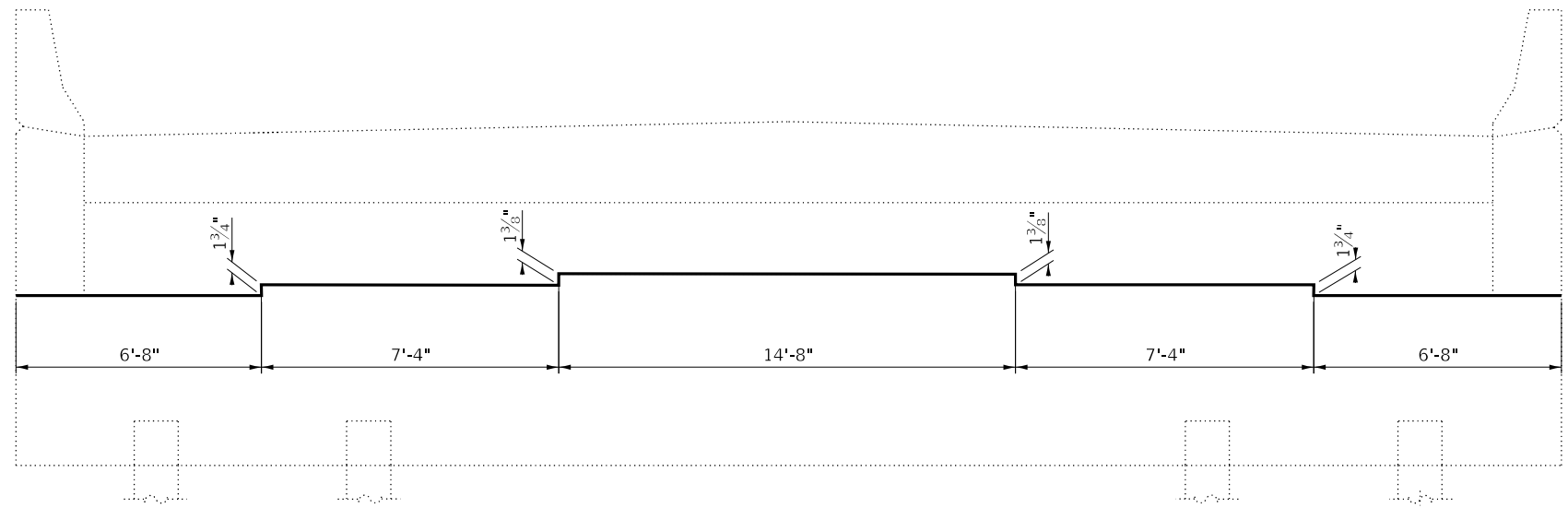
**SECTION THRU ABUT.**



**SECTION THRU ABUT.**



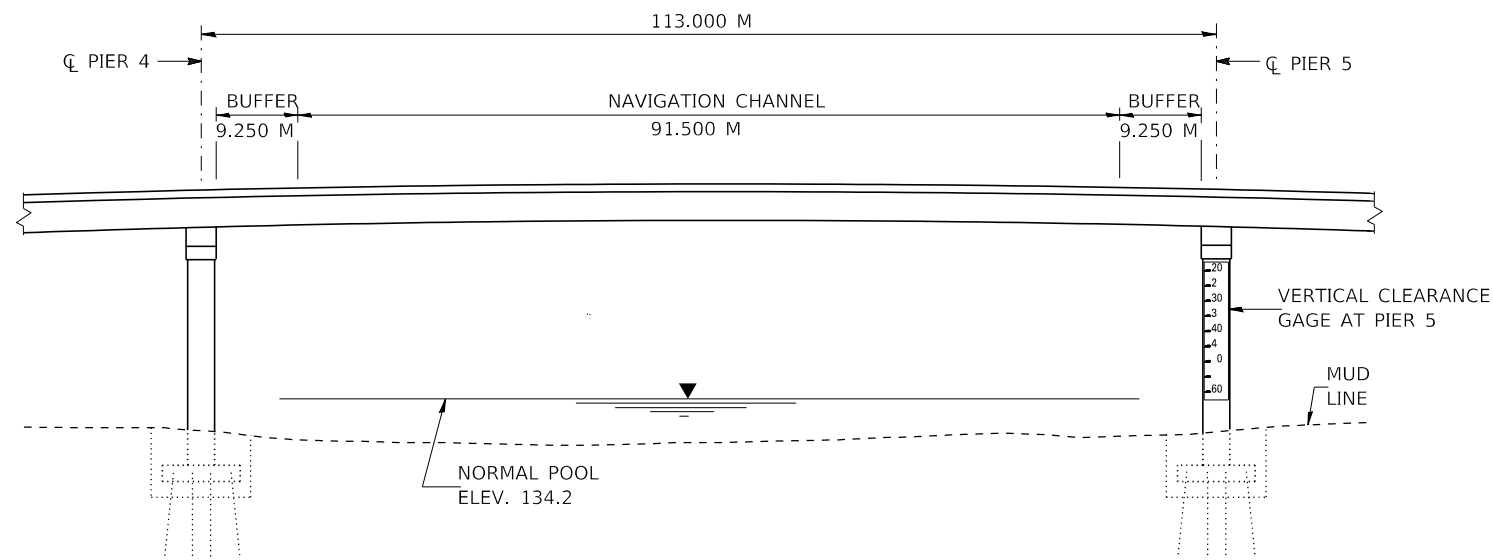
**ELEVATION  
SOUTH ABUTMENT**



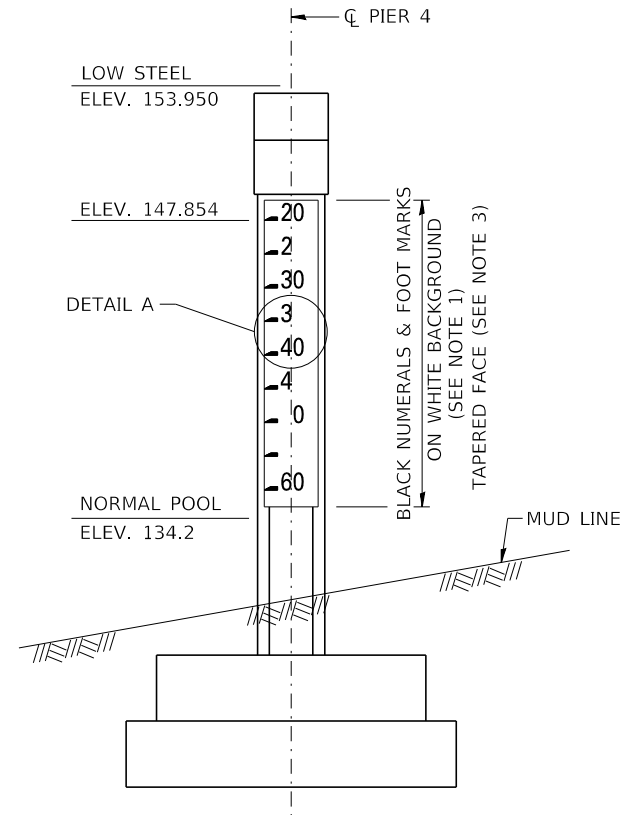
**ELEVATION  
NORTH ABUTMENT**

FILE NAME =	USER NAME = woodshankr1	DESIGNED - RW	REVISED -	<b>STATE OF ILLINOIS DEPARTMENT OF TRANSPORTATION</b>	<b>EXISTING STRUCTURE PLANS ABUTMENTS</b>	F.A.P. RTE.	SECTION	COUNTY	TOTAL SHEETS	SHEET NO.	
pw:\IL\084EBIDINTEG.illinois.gov\PIDOT\Documents\IDOT Offices\District 3\Projects\0366\B366\B366.dgn	PLOT SCALE = 100.0000' / in.	CHECKED - EP	REVISED -			619	(70BR)BC,BDS	LASALLE	12	10	
Default	PLOT DATE = 10/12/2017	DATE - 9/8/17	REVISED -			CONTRACT NO. 66H89					
						SCALE:	SHEET 5	OF 7	SHEETS	STA.	TO STA.



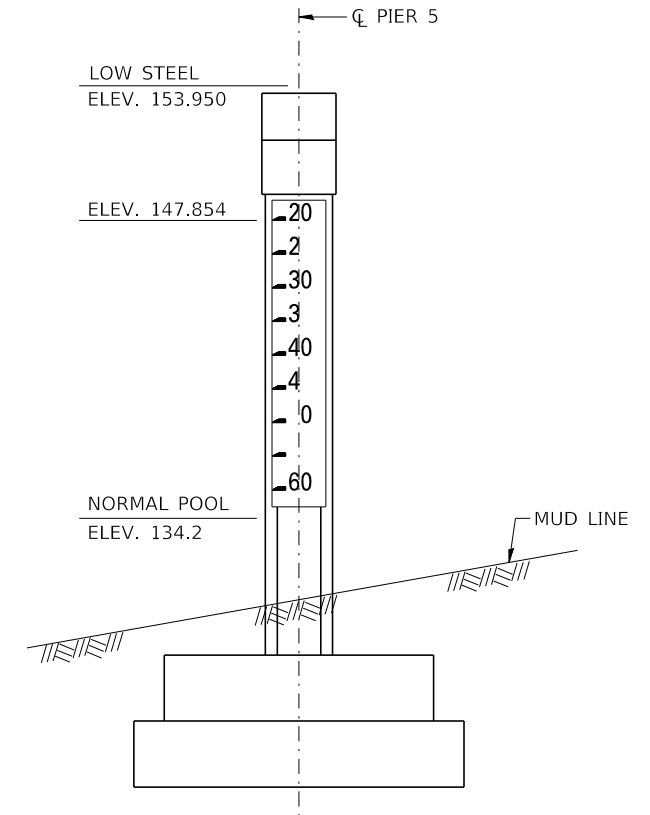


**ELEVATION**



**VERTICAL CLEARANCE GAUGE**

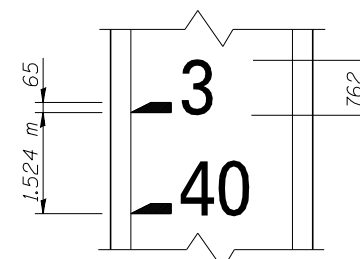
AT PIER 4  
 (WEST FACE OF PIER 4)



**VERTICAL CLEARANCE GAUGE**

AT PIER 5  
 (EAST FACE OF PIER 5)

NOTE:  
 CLEARANCE GAUGES, EXISTING SIGNS SHALL BE PROTECTED FROM BRIDGE WASHING CONCRETE SEALING OPERATIONS. IF THE CLEARANCE GAUGES OR SIGNS DAMAGED DUE TO THE CONTRACTOR'S OPERATIONS, THEY SHALL BE REPAIRED OR REPLACED AT THE CONTRACTORS EXPENSE.

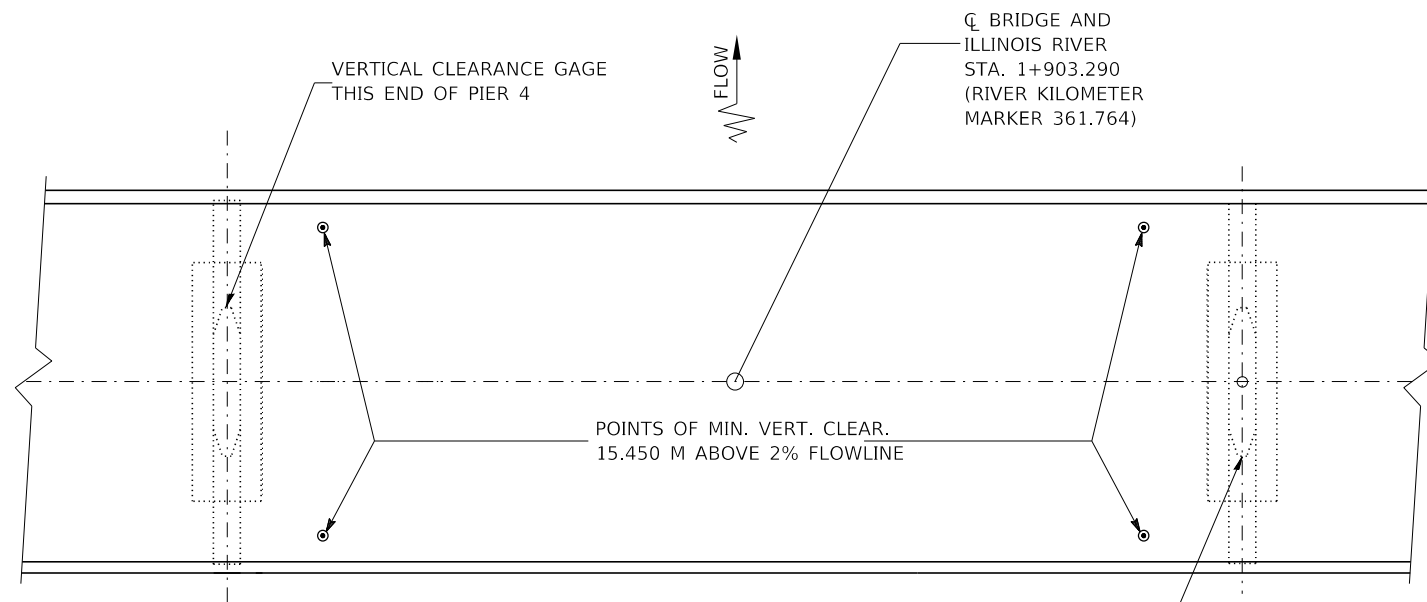


**DETAIL A**

**BRIDGE CLEARANCE GAUGE NOTES**

- SERIES - E NUMERALS SHALL BE USED AND SHALL CONFORM TO "STANDARD ALPHABETS FOR HIGHWAY SIGNS" BY U.S. DEPARTMENT OF TRANSPORTATION, FEDERAL HIGHWAY ADMINISTRATION, 1966, REPRINTED 1984.
- WHITE BACKGROUND, BLACK NUMERALS AND BLACK FOOTMARKS SHALL BE PAINTED DIRECTLY ON PIER FACES. SEE SPECIAL PROVISIONS FOR "BRIDGE CLEARANCE GAUGES."
- DIMENSIONS AND SPACING OF TEXT SHOWN ARE PROJECTED DIMENSIONS IN THE HORIZONTAL PLANE OF PIER FACE AND SHALL BE INCREASED ON THE TAPERED FACE OF THE PIER.
- MANUFACTURED NUMERALS AND BACKGROUND MATERIALS OF THE REQUIRED SIZES MAY BE USED IF APPROVED BY THE ENGINEER.
- COST OF BRIDGE CLEARANCE GAUGES SHOWN WILL NOT BE PAID FOR SEPARATELY BUT SHALL BE INCLUDED IN CONCRETE STRUCTURES.

**FOR INFORMATION ONLY**



**PLAN**

FILE NAME =	USER NAME = woodshankr1	DESIGNED - RW	REVISED -
p:\11084EBID\INTEG.illinois.gov\PIWIDOT\Documents\IDOT Offices\District 3\Projects\0366\B366\B366\Details.dgn		CHECKED - EP	REVISED -
Default	PLOT DATE = 10/12/2017	DATE - 9/8/17	REVISED -

STATE OF ILLINOIS  
 DEPARTMENT OF TRANSPORTATION

EXISTING STRUCTURE PLANS  
 BRIDGE CLEARANCE GAUGE

SCALE: SHEET 7 OF 7 SHEETS STA. TO STA.

F.A.P. RTE.	SECTION	COUNTY	TOTAL SHEETS	SHEET NO.
619	(70BR)BC,BDS	LASALLE	12	12
CONTRACT NO. 66H89				
ILLINOIS FED. AID PROJECT				